

Excellent Integrated System Limited

Stocking Distributor

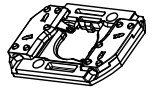
Click to view price, real time Inventory, Delivery & Lifecycle Information:

[Molex Connector Corporation](#)
[1804141112](#)

For any questions, you can email us directly:

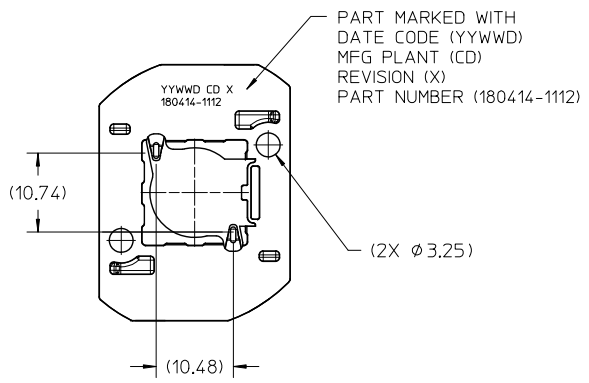
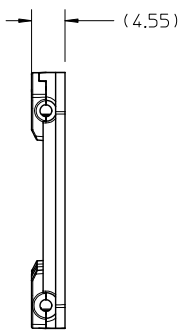
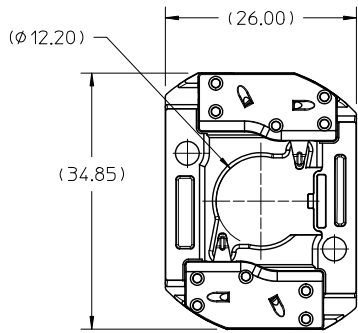
sales@integrated-circuit.com

10	9	8	7	6	5	4	3	2	1
PART NUMBER	DESCRIPTION	POCKET DEPTH	HOUSING	TERMINAL	CAP				
180414-1112	COB LED HOLDER ASSEMBLY	0.90	180413-1112	180155-0133	180154-0105				
180414-2112	COB LED HOLDER ASSEMBLY	0.75	180413-2112	180155-0133	180154-0105				



ISO VIEW 1
SCALE 1:1

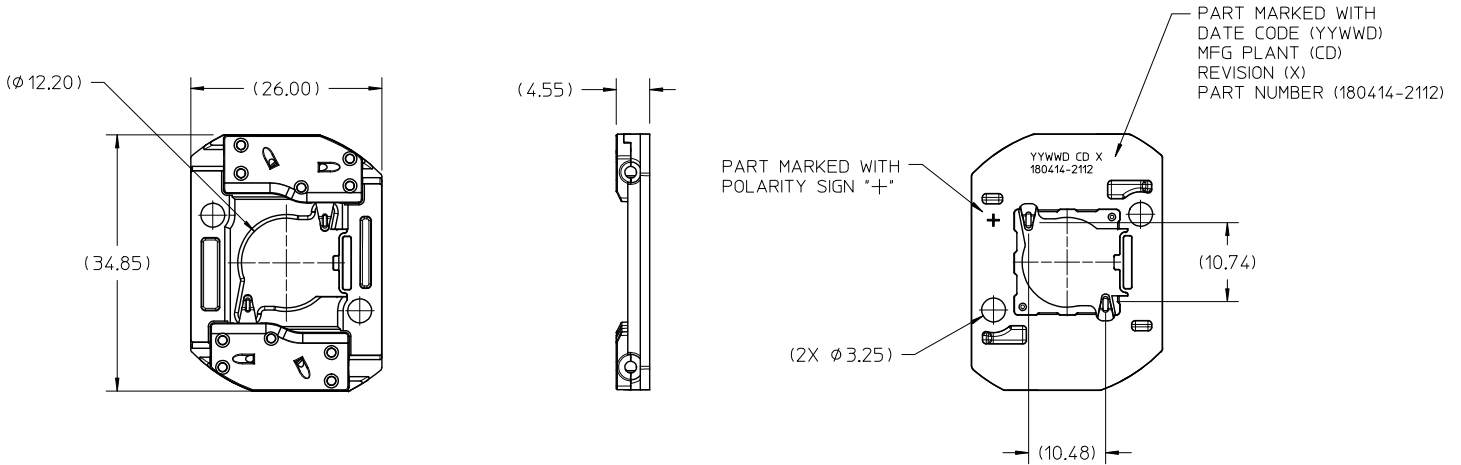
P/N 180414-1112 HOLDER ASSEMBLY
(0.90 POCKET DEPTH)



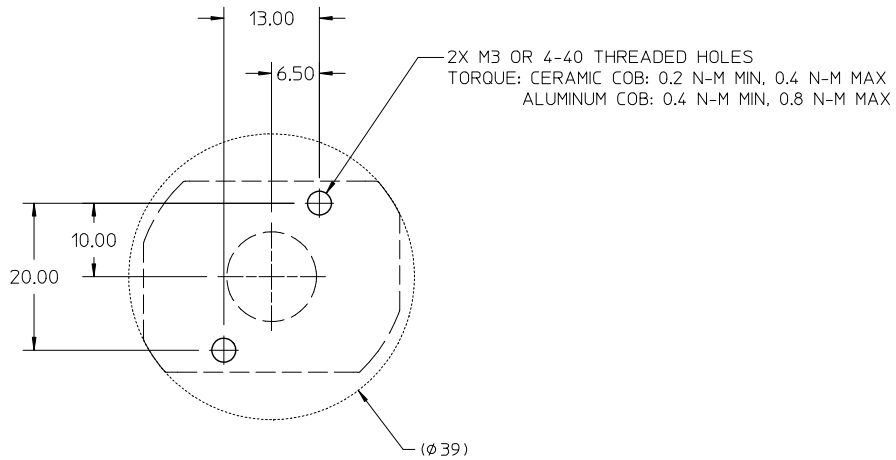
- NOTES:
1. MATERIALS: HOUSING AND CAPS: POLYESTER PBT GLASS FILLED; COLOR: WHITE; TERMINAL: COPPER ALLOY
 2. FINISHES: TERMINAL CONTACT: SELECT GOLD OVER NICKEL
WIRE TRAP: SELECT TIN OVER NICKEL
 3. PRODUCT SPECIFICATION:
 4. PACKAGING SPECIFICATION: PK-180419-005
 5. UL:0LFB2 UL496 FILE NO. E345583
 6. ELV AND ROHS COMPLIANT
 7. FOR USE WITH: 13.5 MM X 13.5 MM COB LED
 8. WIRE GAUGE: 18, 20, AND 22 AWG, SOLID OR STRANDED WITH TIN OVERCOAT. STRIP LENGTH 10MM +2.0/-0.0MM.
 9. ALL DIMENSIONS IN PARENTHESES (XX.XX) ARE FOR REFERENCE ONLY

ENTER DESCRIPTION E.C. NO: SSI2016-0052 DRAWN: OULLES.SS 2016/03/23 CHECKED: MEYER 2016/03/23 APPROVED: MEYER 2016/03/23 REV: C2	QUALITY SYMBOLS	GENERAL TOLERANCES (UNLESS SPECIFIED)	DIMENSION STYLE	SCALE	DESIGN UNITS	THIRD ANGLE PROJECTION																		
	$\nabla=0$ $\nabla=0$ $\nabla=0$	<table border="1"> <thead> <tr> <th></th> <th>mm</th> <th>INCH</th> </tr> </thead> <tbody> <tr> <td>4 PLACES</td> <td>± .13</td> <td>± .005</td> </tr> <tr> <td>3 PLACES</td> <td>± .15</td> <td>± .006</td> </tr> <tr> <td>2 PLACES</td> <td>± 0.13</td> <td>± .005</td> </tr> <tr> <td>1 PLACE</td> <td>± 0.25</td> <td>± .010</td> </tr> <tr> <td>0 PLACE</td> <td>± .13</td> <td>± .005</td> </tr> </tbody> </table>		mm	INCH	4 PLACES	± .13	± .005	3 PLACES	± .15	± .006	2 PLACES	± 0.13	± .005	1 PLACE	± 0.25	± .010	0 PLACE	± .13	± .005	MM ONLY	2:1	METRIC	
		mm	INCH																					
	4 PLACES	± .13	± .005																					
3 PLACES	± .15	± .006																						
2 PLACES	± 0.13	± .005																						
1 PLACE	± 0.25	± .010																						
0 PLACE	± .13	± .005																						
	<table border="1"> <thead> <tr> <th>DRAWN BY</th> <th>DATE</th> </tr> </thead> <tbody> <tr> <td>MCOLE</td> <td>2013/12/09</td> </tr> <tr> <th>CHECKED BY</th> <th>DATE</th> </tr> <tr> <td>MCOLE</td> <td>2013/12/09</td> </tr> <tr> <th>APPROVED BY</th> <th>DATE</th> </tr> <tr> <td>DMCGOWAN</td> <td>2013/12/09</td> </tr> </tbody> </table>	DRAWN BY	DATE	MCOLE	2013/12/09	CHECKED BY	DATE	MCOLE	2013/12/09	APPROVED BY	DATE	DMCGOWAN	2013/12/09	TITLE	COB LED HOLDER ASSEMBLY 13.5 MM X 13.5 MM SQUARE									
DRAWN BY	DATE																							
MCOLE	2013/12/09																							
CHECKED BY	DATE																							
MCOLE	2013/12/09																							
APPROVED BY	DATE																							
DMCGOWAN	2013/12/09																							
	ANGULAR ±1/2° DRAFT WHERE APPLICABLE MUST REMAIN WITHIN DIMENSIONS	MATERIAL NO.	DOCUMENT NO.																					
		SEE CHART		SD-180414-112	SHEET NO. 1 OF 5																			
THIS DRAWING CONTAINS INFORMATION THAT IS PROPRIETARY TO MOLEX INCORPORATED AND SHOULD NOT BE USED WITHOUT WRITTEN PERMISSION																								

P/N 180414-2112 HOLDER ASSEMBLY
(0.75 POCKET DEPTH)



ENTER DESCRIPTION E.C. NO: SSI.2016-0052 DRAWN: OULLES.SS. 2016/03/23 CHECKED: MEYER 2016/03/23 APPROVED: MEYER 2016/03/13	QUALITY SYMBOLS	GENERAL TOLERANCES (UNLESS SPECIFIED)		DIMENSION STYLE MM ONLY		SCALE 2:1	DESIGN UNITS METRIC	THIRD ANGLE PROJECTION
	$\nabla=0$	4 PLACES	\pm ---	\pm ---	DRAWN BY MCOLE	DATE 2013/12/09	TITLE COB LED HOLDER ASSEMBLY 13.5 MM X 13.5 MM SQUARE molex DOCUMENT NO. SD-180414-112 SHEET NO. 2 OF 5	
	$\nabla=0$	3 PLACES	\pm ---	\pm ---	CHECKED BY MCOLE	DATE 2013/12/09		
	$\nabla=0$	2 PLACES	± 0.13	\pm ---	APPROVED BY DMCGOWAN	DATE 2013/12/09		
$\nabla=0$	1 PLACE	± 0.25	\pm ---	MATERIAL NO. SEE CHART				
		0 PLACE	\pm ---	\pm ---	ANGULAR $\pm 1/2^\circ$ DRAFT WHERE APPLICABLE MUST REMAIN WITHIN DIMENSIONS			
					SIZE B	THIS DRAWING CONTAINS INFORMATION THAT IS PROPRIETARY TO MOLEX INCORPORATED AND SHOULD NOT BE USED WITHOUT WRITTEN PERMISSION		

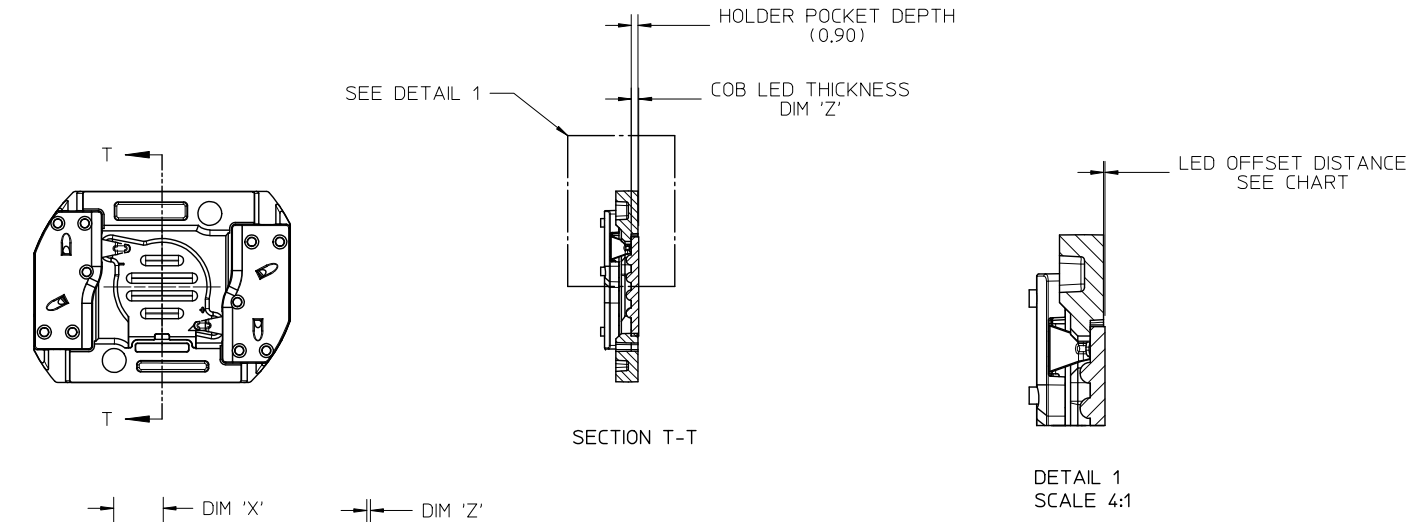


RECOMMENDED MOUNTING DIMENSIONS

ENTER DESCRIPTION E.C. NO: SSI.2016-0052 DRAWN: QUILLES.SSI 2016/03/23 CHKD: MEYER 2016/03/23 APPROVED BY: MEYER 2016/03/13	QUALITY SYMBOLS $\nabla=0$ $\nabla=0$ $\nabla=0$	GENERAL TOLERANCES (UNLESS SPECIFIED)		DIMENSION STYLE MM ONLY	SCALE 2:1	DESIGN UNITS METRIC	THIRD ANGLE PROJECTION
		mm	INCH	DRAWN BY MCOLE	DATE 2013/12/09	TITLE COB LED HOLDER ASSEMBLY 13.5 MM X 13.5 MM SQUARE	
REV C2	DESCRIPTION	4 PLACES	\pm ---	\pm ---	CHECKED BY MCOLE	DATE 2013/12/09	
		3 PLACES	\pm ---	\pm ---	APPROVED BY DMCGOWAN	DATE 2013/12/09	
		2 PLACES	\pm 0.13	\pm ---	MATERIAL NO. SEE CHART		
		1 PLACE	\pm 0.25	\pm ---	SHEET NO. 3 OF 5		
		0 PLACE	\pm ---	\pm ---	THIS DRAWING CONTAINS INFORMATION THAT IS PROPRIETARY TO MOLEX INCORPORATED AND SHOULD NOT BE USED WITHOUT WRITTEN PERMISSION		

10	9	8	7	6	5	4	3	2	1
COB MFG	TYPE	DIM 'X'	DIM 'Y'	DIM 'Z'	DIM 'D'	OFFSET			
VOSSL0H-SCHWABE	DMC122	13.5	13.5	1.0	10.0	0.10			
TRIDONIC	LES10 GEN 3	13.5	13.5	1.1	-	0.11			

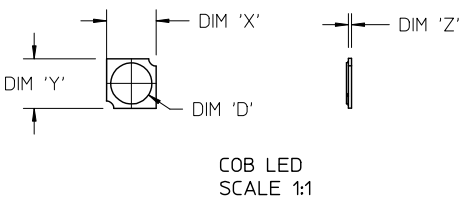
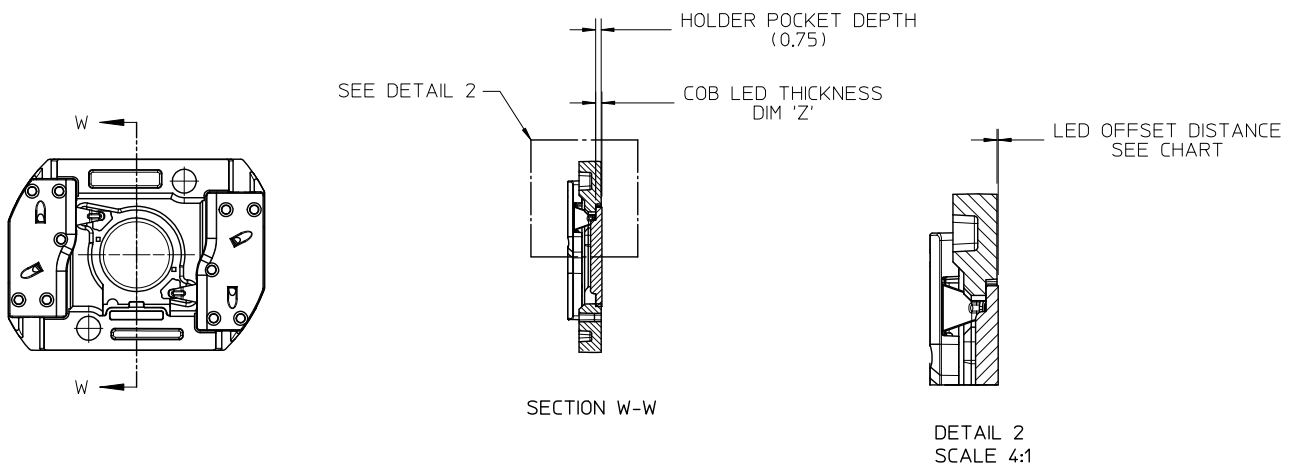
ILLUSTRATION OF P/N 180414-1112 HOLDER MATED WITH LED



ENTER DESCRIPTION EIC NO: SSI2016-0052 DRAWN: OULIES.SSI 2016/03/23 CHECKED BY: CHYKOMEIER 2016/03/23 APPROVED BY: 2016/05/13	QUALITY SYMBOLS =0 =0 =0	GENERAL TOLERANCES (UNLESS SPECIFIED)		DIMENSION STYLE MM ONLY		SCALE 2:1	DESIGN UNITS METRIC	THIRD ANGLE PROJECTION	
		4 PLACES	± .005	± .0008	DRAWN BY	DATE	TITLE COB LED HOLDER ASSEMBLY 13.5 MM X 13.5 MM SQUARE		
		3 PLACES	± .005	± .0008	CHECKED BY	DATE			
		2 PLACES	± 0.13	± .005	MCOLE	2013/12/09			
1 PLACE	± 0.25	± .005	APPROVED BY	DATE					
0 PLACE	± .005	± .005	DMCGOWAN	2013/12/09	MATERIAL NO. SEE CHART		DOCUMENT NO. SD-180414-112	SHEET NO. 4 OF 5	
ANGLE ± 1/2° DRAFT WHERE APPLICABLE MUST REMAIN WITHIN DIMENSIONS		SIZE B		THIS DRAWING CONTAINS INFORMATION THAT IS PROPRIETARY TO MOLEX INCORPORATED AND SHOULD NOT BE USED WITHOUT WRITTEN PERMISSION					

10	9	8	7	6	5	4	3	2	1
COB MFG	TYPE	DIM 'X'	DIM 'Y'	DIM 'Z'	DIM 'D'	OFFSET			
CITIZEN	CLL020, CLL022, CLU024	13.5	13.5	0.90	11.2	0.15			
SEOUL	ZC6	13.5	13.5	0.90	10.0	0.15			
TRIDONIC	LES 10 GEN 4	13.5	13.5	0.85	10.0	0.10			

ILLUSTRATION OF P/N 180414-2112 HOLDER MATED WITH LED



ENTER DESCRIPTION E.C. NO: SSI2016-0052 DRAWN: OULLES.SS 2016/03/23 CHECKED BY: CHKOGMEYER 2016/03/23 APPROVED BY: APPRGGMEYER 2016/05/13	QUALITY SYMBOLS √=0 √=0 √=0	GENERAL TOLERANCES (UNLESS SPECIFIED)		DIMENSION STYLE MM ONLY	SCALE 2:1	DESIGN UNITS METRIC	THIRD ANGLE PROJECTION	
		4 PLACES ± --- ± ---	mm	INCH	DRAWN BY MCOLE	DATE 2013/12/09	TITLE COB LED HOLDER ASSEMBLY 13.5 MM X 13.5 MM SQUARE	
		3 PLACES ± --- ± ---			CHECKED BY MCOLE	DATE 2013/12/09	molex	
		2 PLACES ± 0.13 ± ---			APPROVED BY DMCGOWAN	DATE 2013/12/09	DOCUMENT NO. SD-180414-112	SHEET NO. 5 OF 5
1 PLACE ± 0.25 ± ---			ANGULAR ± 1/2° DRAFT WHERE APPLICABLE MUST REMAIN WITHIN DIMENSIONS	MATERIAL NO. SEE CHART	THIS DRAWING CONTAINS INFORMATION THAT IS PROPRIETARY TO MOLEX INCORPORATED AND SHOULD NOT BE USED WITHOUT WRITTEN PERMISSION			
0 PLACE ± --- ± ---				SIZE B				