

Excellent Integrated System Limited

Stocking Distributor

Click to view price, real time Inventory, Delivery & Lifecycle Information:

[Cinch Connectivity Solutions](#)

[PL220-011](#)

For any questions, you can email us directly:

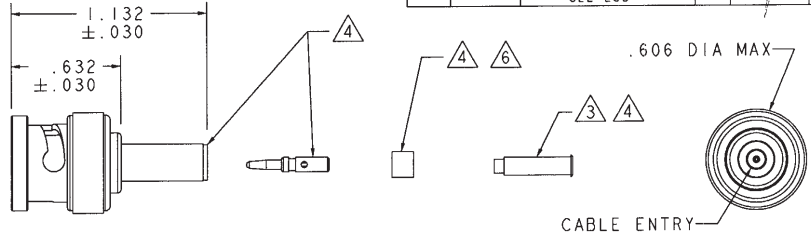
sales@integrated-circuit.com

RED INDICATES ORIGINAL

DASH NO	CABLES ACCOMMODATED	A HEX	ASSEMBLE PER
-001	RG-178, -196	.178	TAI-A118
-002	HEWLETT PACKARD 8120-1107	.197	
-003	RG-174, -188, -316	.178	
-004	RG-179, -187		
-005	MIL 17/094		
-006	GC875GPI, GRUMMAN DBL-SHLD RG-188	.197	
-007	275-3991, MICRODOT		
-008	RG-195, -180 421-1111, ESSEX 8218, BELDEN	.178	
-009	YR23023 BELDEN 21-597, ESSEX		
-010	RG-122		
-011	RG-58, -141, -303 21-537 ESSEX, TCC-50-2	.213	TAI-C118
-012	RG-55, -142, -223 RG-400		
-013	RG-59		
-013A	TCC-75-2	.255	
-013B	RG-62		
-014	8212, BELDEN		
-015	730A, AT&T	.290	
-015A	RG-71		
-016	724, AT&T 8281, BELDEN	.324	
-017	RG-6	.344	
-018	9268, BELDEN	.255	TAI-A118
-019	8279, BELDEN		
-020	9248, BELDEN	.290	
-021	88240, BELDEN	.213	
-022	88241, 89269, BELDEN	.255	TAI-C118
-023	89108, BELDEN		
-024	89120, BELDEN	.290	
-025	734A, AT&T	.255	TAI-A118
-026	735A, AT&T	.178	
-027	KS19224L2, AT&T		

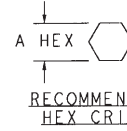
DATA CONTAINED IN THIS DOCUMENT IS PROPRIETARY TO TROMPETER ELECTRONICS INC. AND SHALL NOT BE DISCLOSED, COPIED OR USED FOR PROCUREMENT OR MANUFACTURE WITHOUT EXPRESS WRITTEN PERMISSION

REVISIONS			1-0442	SH 1
REV	ECO NO.	DESCRIPTION	DWN	APPROVED
AA	12007	ADDED 8-1613 TO DASH NO'S -009, -024, -026, & -027; SEE ECO	AAH	<i>[Signature]</i>



- ⑧ FOR CABLE GROUP -011 SUPPLY 1 EA ACC011 FOR CABLE GROUP -013, -013A & -013B SUPPLY 1 EA ACC013 MAY BE ASSEMBLED TO CABLE/CONNECTOR ASSY USING 3M SCOTCHGRIP NO 1099 PLASTIC ADHESIVE OR EQUIV
- ⑦ IF ACCESSORY PLASTIC STRAIN RELIEF REQUIRED ADD SUFFIX "BT" TO MODEL NO (ONLY AVAILABLE WITH CABLE GROUPS -011, -013, -013A, & -013B)
- ⑥ CONTACT SUPPORT BUSHING REQUIRED ON -0138, -015A & -022 ONLY
- 5. RF COAXIAL BNC FULL CRIMP CABLE PLUG (EQUIV MIL-CAT "D")
- ④ PIN, SLEEVE, CRIMP SLEEVE & CONTACT SUPPORT BUSHING ARE SUPPLIED LOOSE
- ③ SLEEVE REQUIRED ON -001 THRU -007 ONLY

INCH	MM
.005	0.13
.030	0.76
.178	4.52
.197	5.00
.213	5.41
.255	6.48
.290	7.37
.324	8.23
.344	8.73
.606	15.39
.632	16.05
1.132	28.75



- 2. FINISH: TFS-1A (TOTAL BUILD-UP .000180-.000450) (NICKEL)
- 1. ALL DIM ARE IN INCHES

QTY	DESCRIPTION	PART NUMBER	ITEM			
TOL UNLESS SPECIFIED		PL220				
.XX ±						
.XXX ±						
.XXXX ±						
ANGLE ±						
DWG	AAH	5-7-97	MATERIAL	CODE IDENT	DRAWING NO.	REV
CHK	<i>[Signature]</i>	<i>[Signature]</i>		14949	1-0442	AA
ENGR	<i>[Signature]</i>	<i>[Signature]</i>				
APPR	<i>[Signature]</i>	<i>[Signature]</i>	SCALE 2/1	DATE 2-1-77	SHEET 1C	