

Excellent Integrated System Limited

Stocking Distributor

Click to view price, real time Inventory, Delivery & Lifecycle Information:

[Knowles](#)

[TWFK-60173-000](#)

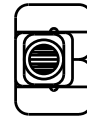
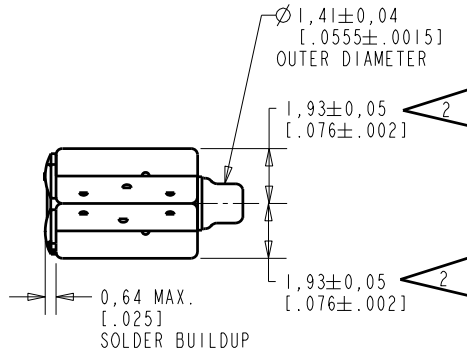
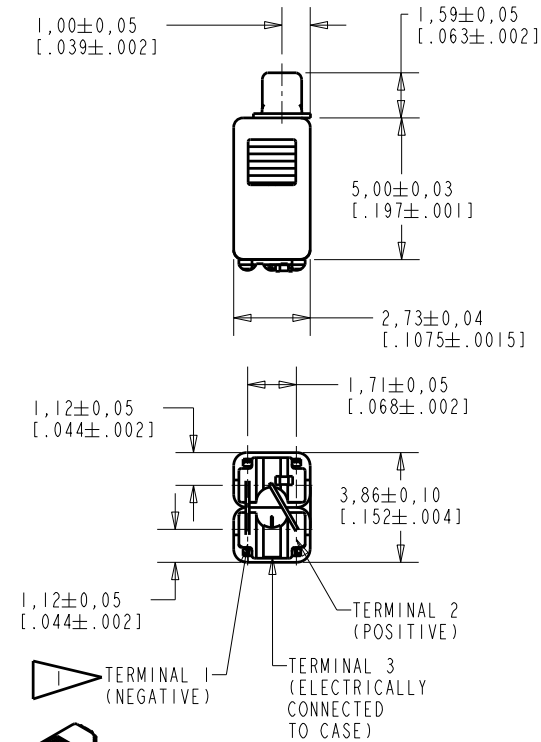
For any questions, you can email us directly:

sales@integrated-circuit.com

TWFK-60173-000
SHT 1.1

NOTES:

- 1 A POSITIVE GOING VOLTAGE AT TERMINAL 2, RELATIVE TO TERMINAL 1, CAUSES A DECREASE IN PRESSURE AT THE SOUND OUTLET.
- 2 LOCATED FROM TWO SURFACES FOR CUSTOMER CONVENIENCE. ONLY APPLICABLE FROM ONE SURFACE, NOT TO BE USED TOGETHER.



SCALE 2:1

DIMENSIONS IN MILLIMETERS [INCHES]

Revision	C.O. #	Implementation Date	RELEASE LEVEL	REVISION
			Active	D
D	CI0110633	12-11-09		

KNOWLES ELECTRONICS
ITASCA, ILLINOIS U.S.A.

SCALE:	5:1		DR. BY	DATE
DO NOT SCALE DRAWING			SJ	5-27-08
TITLE:	RECEIVER	TWFK-60173-000	CK. BY	DATE
OUTLINE DRAWING		SHT 1.1	GJP	6-2-08
			APP. BY	DATE
			GJP	6-2-08

UMDAMPING

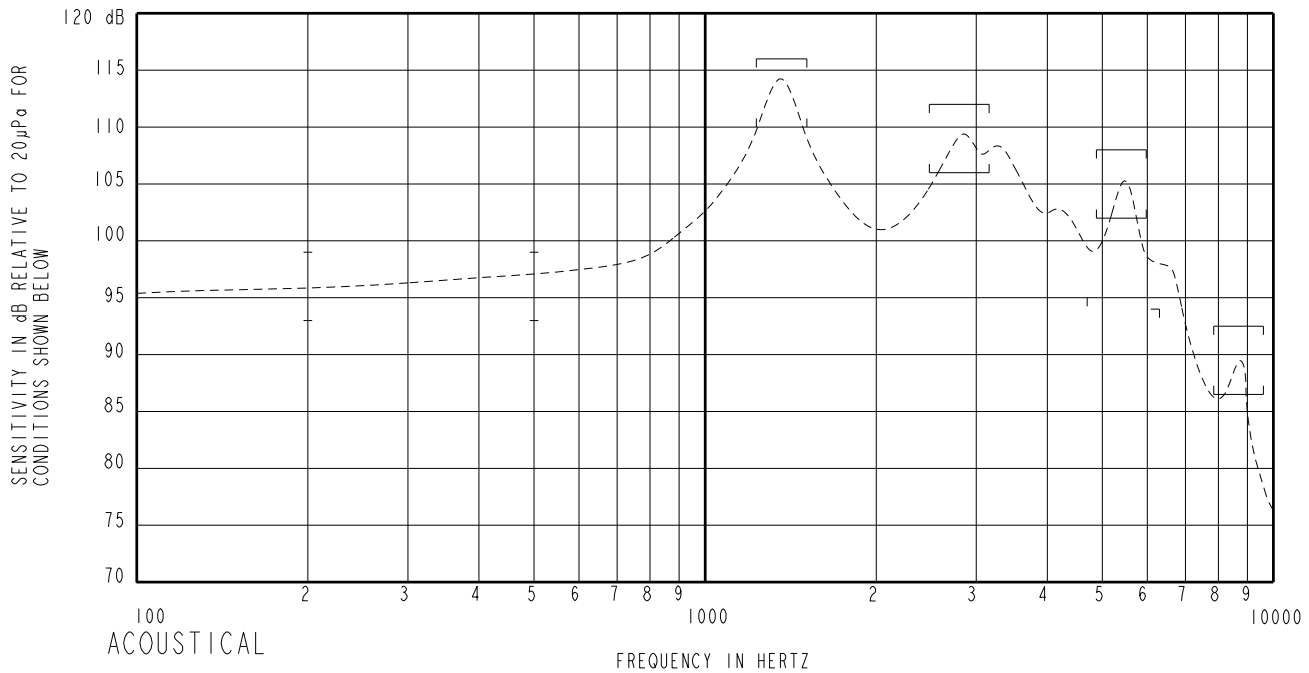
TWFK-60173-000

SHEET 2.1

THE TWFK IS A CONJOINED FK AND WIDEBAND FK RECEIVER (BOTH MAGNETIC BALANCED ARMATURE RECEIVERS). CROSSOVER CAPACITOR AND CASE GROUND. NOTICE SPECIAL LIMITS AND DRIVE LEVEL IN THD TEST.

NOTE: SPECIFICATIONS FOLLOWED BY AN ASTERISK (*) ARE 100% TESTED.

CONSTANT VOLTAGE DRIVE CONDITIONS (WITH VENT BLOCKED).



SENSITIVITY*
DEVICE WILL PRODUCE THE SPL LISTED BELOW UNDER TEST CONDITION IN TABLE 3.
NOMINAL SENSITIVITY AT 500Hz IS dB RELATIVE TO 20 μPa. ALL OTHER VALUES IN dB RELATIVE TO THE SENSITIVITY AT 500HZ.

FREQUENCY (Hz)	MINIMUM	NOMINAL	MAXIMUM
200	-4.0	-1.0	+2.0
500	-2.0	97.0	+2.0
1230-1510	+13.0	+16.0	+19.0
2480-3160	+9.0	+12.0	+15.0
4700	-2.0	---	---
4880-5970	+5.0	+8.0	+11.0
6300	-3.0	---	---
7850-9600	-10.5	-7.5	-4.5

MECHANICAL:
PORT LOCATION: IS
SOLER TYPE: SAC305

TEMPERATURE:
OPERATING: SENSITIVITY AT 500HZ WILL NOT VARY BY MORE THAN ±3 dB FROM -17°C TO 63°C.
STORAGE: -40°C TO 63°C.

TABLE 1
TOTAL HARMONIC DISTORTION*
DEVICE WILL NOT EXCEED TOTAL HARMONIC DISTORTION LEVELS LISTED BELOW.

FREQUENCY (Hz)	AC DRIVE (V rms)	DC BIAS (V)	LIMIT (%)
690	0.350	0	5
460	0.50	0	5
690	0.50	0	6

TABLE 2

TEST CONDITIONS

NOMINAL SOURCE VOLTAGE	0.350 V rms, 0 mA V DC BIAS
SOURCE IMPEDANCE	<1 Ohm
TUBING	8mm X 1mm ID + 28mm X 1.5 ID EAR HOOK SIMULATOR + 25mm X 2mm ID TUBE + 18mm X 3mm ID TUBE
COUPLER CAVITY	2 CM ³ , SIMULATED ANSI S3.7 TYPE HA-3 (IEC 60318-5)

TABLE 3

ELECTICAL

DC RESISTANCE	400 Ohms ± 10%* 400 Ohms FK / 200 Ohms WBFK
IMPEDANCE @ 500 Hz	486 Ohms ± 15%*
IMPEDANCE @ 1kHz	706 Ohms ± 15%*

TABLE 4

ISOLATION: CASE WILL BE ELECTRICALLY ISOLATED FROM THE COIL CIRCUIT.

