

## Excellent Integrated System Limited

Stocking Distributor

Click to view price, real time Inventory, Delivery & Lifecycle Information:

[MikroElektronika](#)

[MIKROE-1576](#)

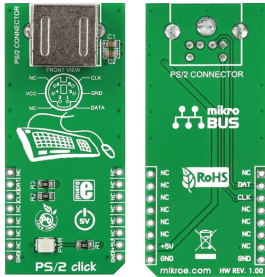
For any questions, you can email us directly:

[sales@integrated-circuit.com](mailto:sales@integrated-circuit.com)



PS/2 click™

## 1. Introduction



PS/2 click™ is a cost-effective solution for adding keyboard and mouse connectivity to your design. It features a standard 6-pin Mini-DIN PS/2 connector, a **mikroBUS™** host socket, and a power indicator LED. It's an alternative to the USB connector used for modern peripherals. PS/2 click™ communicates with the target board through mikroBUS™ RST (data) and CS (clock) pins. It's designed to use a 5V power supply only.

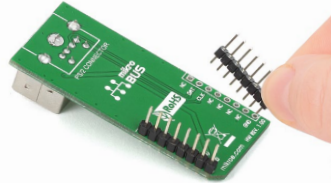
## 2. Soldering the headers

Before using your click™ board, make sure to solder 1x8 male headers to both left and right side of the board. Two 1x8 male headers are included with the board in the package.



1

2



Turn the board upside down so that the bottom side is facing you upwards. Place shorter pins of the header into the appropriate soldering pads.

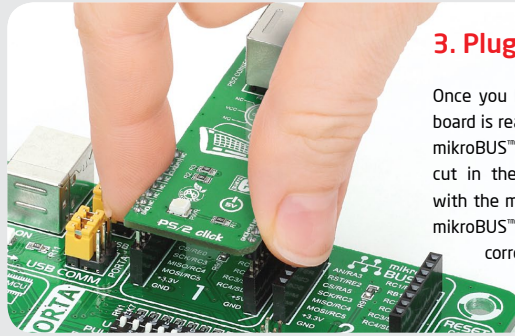
3



Turn the board upward again. Make sure to align the headers so that they are perpendicular to the board, then solder the pins carefully.

## 3. Plugging the board in

Once you have soldered the headers your board is ready to be placed into the desired mikroBUS™ socket. Make sure to align the cut in the lower-right part of the board with the markings on the silkscreen at the mikroBUS™ socket. If all the pins are aligned correctly, push the board all the way into the socket.



## 4. Essential features

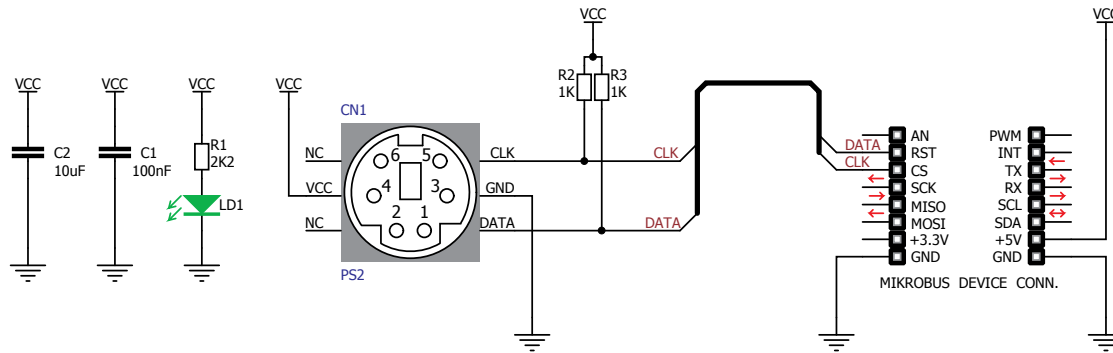
Even though somewhat superseded by USB, PS/2 connectors are still used. PS/2 click™ is especially suited for connecting vintage or certain modern high-end keyboards and mice. One of the key benefits of PS/2 is that it supports full n-key rollover. It's the ability of the keyboard to handle any number of simultaneous keystrokes.

click™  
BOARD  
[www.mikroe.com](http://www.mikroe.com)

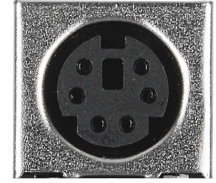
PS/2 click Manual  
ver. 1.00



## 5. PS/2 click™ Board Schematic



## 6. PS/2 vs USB



PS/2 connected keyboards have slightly shorter effective scan intervals than their USB counterparts, which makes them faster. This could be an important consideration in some applications.

## 7. Code Examples

Once you have done all the necessary preparations, it's time to get your click™ board up and running. We have provided examples for mikroC™, mikroBasic™ and mikroPascal™ compilers on our **Libstock** website. Just download them and you are ready to start.



## 8. Support

MikroElektronika offers **Free Tech Support** ([www.mikroe.com/support/](http://www.mikroe.com/support/)) until the end of the product's lifetime, so if something goes wrong, we're ready and willing to help!

