

Excellent Integrated System Limited

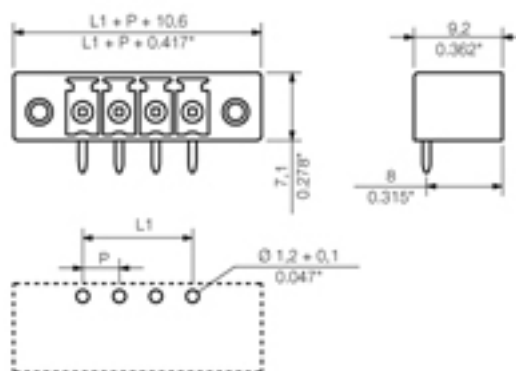
Stocking Distributor

Click to view price, real time Inventory, Delivery & Lifecycle Information:

[Weidmüller](#)
[1793360000](#)

For any questions, you can email us directly:
sales@integrated-circuit.com

Product catalogue | PCB connection systems | PCB plug-in connectors | Pitch 3.81 mm (0.150 inch) | Plug connectors, solder connection, pitch 3.81 | SC 3.81/90 | SC 3.81/90F


General ordering data

Order No.	1793360000
Part designation	SC 3.81/05/90F 3.2SN BK BX
Version	PCB plug-in connector, Male connectors, Soldered connection, Pitch: 3.81 mm, No. of poles: 5, 90°, Box
EAN	4032248228430
Qty.	50 pc(s).

System parameters

Fitted to PCB	Soldered connection
Outgoing elbow	90°
Pitch	3.81 mm
Pitch in inch	0.15 inch
No. of poles	5
Solder pin length	3.2 mm
Can be coded	Yes
No. of rows	1
No. of solder pins per pole	1
Dia. of fitting hole	1.2 mm
Fitting hole tolerance	+ 0.1 mm
L1 in mm	15.24 mm
L1 in inch	0.6 inch
Insulation resistance	1,000 MΩ
Electric shock protection to DIN VDE 0470	IP 20
Electric shock protection to DIN VDE 0470	Safe from finger touch

Material data

Insulating material	PA GF
Colour	black
colour chart	Similar to RAL 9011
Insulating material group	II
Flammability class UL 94	V-0
CTI	≥ 475
Contact base material	Copper alloy

Product catalogue | PCB connection systems | PCB plug-in connectors | Pitch 3.81 mm (0.150 inch) | Plug connectors, solder connection, pitch 3.81 | SC 3.81/90 | SC 3.81/90F

Material data

Contact surface	tinned
Constant operating temp., min.	-25 °C
Constant operating temp., max.	120 °C
Storage temperature, min.	-25 °C
Storage temperature, max.	55 °C
Max. relative humidity during storage	93 %

DIN IEC rating data

Rated current, min. No. pins (Tu=20°C)	17.5 A
Rated current, min. No. pins(Tu=40°C)	17.5 A
Rated voltage for overvoltage class/pollution severity III/3	160 V
Rated impulse withstand voltage for overvoltage class/pollution severity III/3	2.5 kV
Rated voltage for overvoltage class/pollution severity III/2	160 V
Rated impulse withstand voltage for overvoltage class/pollution severity III/2	2.5 kV
Rated voltage for overvoltage class/pollution severity II/2	320 V
Rated impulse withstand voltage for overvoltage class/pollution severity II/2	2.5 kV
Short-time withstand current resistance	3 x 1s with 76 A

CSA rating data

Rated voltage (Use group D)	300 V
Rated current (Use group D)	10 A

UL 1059 rating data

Rated voltage (Use group D)	300 V
Rated current (Use group D)	10 A

Approvals

Approvals institutes



Classifications

eClass 4.1	27-26-07-01
eClass 5.0	27-26-07-01
eClass 5.1	27-26-07-04

Similar products

Order No.	Part designation	Version
1942450000	SC 3.81/02/90F 3.2SN OR BX	PCB plug-in connector, Male connectors, Soldered connection, Pitch: 3.81 mm, No. of poles: 2, 90°, Box

Product catalogue | PCB connection systems | PCB plug-in connectors | Pitch 3.81 mm (0.150 inch) | Plug connectors, solder connection, pitch 3.81 | SC 3.81/90 | SC 3.81/90F

1793330000	SC 3.81/02/90F 3.2SN BK BX	PCB plug-in connector, Male connectors, Soldered connection, Pitch: 3.81 mm, No. of poles: 2, 90°, Box
1793420000	SC 3.81/02/90F 3.2SN GN BX	PCB plug-in connector, Male connectors, Soldered connection, Pitch: 3.81 mm, No. of poles: 2, 90°, Box
1942460000	SC 3.81/03/90F 3.2SN OR BX	PCB plug-in connector, Male connectors, Soldered connection, Pitch: 3.81 mm, No. of poles: 3, 90°, Box
1793340000	SC 3.81/03/90F 3.2SN BK BX	PCB plug-in connector, Male connectors, Soldered connection, Pitch: 3.81 mm, No. of poles: 3, 90°, Box
1793430000	SC 3.81/03/90F 3.2SN GN BX	PCB plug-in connector, Male connectors, Soldered connection, Pitch: 3.81 mm, No. of poles: 3, 90°, Box
1942470000	SC 3.81/04/90F 3.2SN OR BX	PCB plug-in connector, Male connectors, Soldered connection, Pitch: 3.81 mm, No. of poles: 4, 90°, Box
1793350000	SC 3.81/04/90F 3.2SN BK BX	PCB plug-in connector, Male connectors, Soldered connection, Pitch: 3.81 mm, No. of poles: 4, 90°, Box
1793440000	SC 3.81/04/90F 3.2SN GN BX	PCB plug-in connector, Male connectors, Soldered connection, Pitch: 3.81 mm, No. of poles: 4, 90°, Box
1942480000	SC 3.81/05/90F 3.2SN OR BX	PCB plug-in connector, Male connectors, Soldered connection, Pitch: 3.81 mm, No. of poles: 5, 90°, Box
1793450000	SC 3.81/05/90F 3.2SN GN BX	PCB plug-in connector, Male connectors, Soldered connection, Pitch: 3.81 mm, No. of poles: 5, 90°, Box
1942490000	SC 3.81/06/90F 3.2SN OR BX	PCB plug-in connector, Male connectors, Soldered connection, Pitch: 3.81 mm, No. of poles: 6, 90°, Box
1793370000	SC 3.81/06/90F 3.2SN BK BX	PCB plug-in connector, Male connectors, Soldered connection, Pitch: 3.81 mm, No. of poles: 6, 90°, Box
1793460000	SC 3.81/06/90F 3.2SN GN BX	PCB plug-in connector, Male connectors, Soldered connection, Pitch: 3.81 mm, No. of poles: 6, 90°, Box
1942500000	SC 3.81/07/90F 3.2SN OR BX	PCB plug-in connector, Male connectors, Soldered connection, Pitch: 3.81 mm, No. of poles: 7, 90°, Box
1942740000	SC 3.81/07/90F 3.2SN BK BX	PCB plug-in connector, Male connectors, Soldered connection, Pitch: 3.81 mm, No. of poles: 7, 90°, Box
1942640000	SC 3.81/07/90F 3.2SN GN BX	PCB plug-in connector, Male connectors, Soldered connection, Pitch: 3.81 mm, No. of poles: 7, 90°, Box
1942510000	SC 3.81/08/90F 3.2SN OR BX	PCB plug-in connector, Male connectors, Soldered connection, Pitch: 3.81 mm, No. of poles: 8, 90°, Box
1793380000	SC 3.81/08/90F 3.2SN BK BX	PCB plug-in connector, Male connectors, Soldered connection, Pitch: 3.81 mm, No. of poles: 8, 90°, Box
1793470000	SC 3.81/08/90F 3.2SN GN BX	PCB plug-in connector, Male connectors, Soldered connection, Pitch: 3.81 mm, No. of poles: 8, 90°, Box
1942520000	SC 3.81/09/90F 3.2SN OR BX	PCB plug-in connector, Male connectors, Soldered connection, Pitch: 3.81 mm, No. of poles: 9, 90°, Box
1942750000	SC 3.81/09/90F 3.2SN BK BX	PCB plug-in connector, Male connectors, Soldered connection, Pitch: 3.81 mm, No. of poles: 9, 90°, Box
1942650000	SC 3.81/09/90F 3.2SN GN BX	PCB plug-in connector, Male connectors, Soldered connection, Pitch: 3.81 mm, No. of poles: 9, 90°, Box
1942530000	SC 3.81/10/90F 3.2SN OR BX	PCB plug-in connector, Male connectors, Soldered connection, Pitch: 3.81 mm, No. of poles: 10, 90°, Box
1793390000	SC 3.81/10/90F 3.2SN BK BX	PCB plug-in connector, Male connectors, Soldered connection, Pitch: 3.81 mm, No. of poles: 10, 90°, Box
1793480000	SC 3.81/10/90F 3.2SN GN BX	PCB plug-in connector, Male connectors, Soldered connection, Pitch: 3.81 mm, No. of poles: 10, 90°, Box
1942540000	SC 3.81/11/90F 3.2SN OR BX	PCB plug-in connector, Male connectors, Soldered connection, Pitch: 3.81 mm, No. of poles: 11, 90°, Box

Product catalogue | PCB connection systems | PCB plug-in connectors | Pitch 3.81 mm (0.150 inch) | Plug connectors, solder connection, pitch 3.81 | SC 3.81/90 | SC 3.81/90F

1942760000	SC 3.81/11/90F 3.2SN BK BX	PCB plug-in connector, Male connectors, Soldered connection, Pitch: 3.81 mm, No. of poles: 11, 90°, Box
1942660000	SC 3.81/11/90F 3.2SN GN BX	PCB plug-in connector, Male connectors, Soldered connection, Pitch: 3.81 mm, No. of poles: 11, 90°, Box
1942550000	SC 3.81/12/90F 3.2SN OR BX	PCB plug-in connector, Male connectors, Soldered connection, Pitch: 3.81 mm, No. of poles: 12, 90°, Box
1793400000	SC 3.81/12/90F 3.2SN BK BX	PCB plug-in connector, Male connectors, Soldered connection, Pitch: 3.81 mm, No. of poles: 12, 90°, Box
1793490000	SC 3.81/12/90F 3.2SN GN BX	PCB plug-in connector, Male connectors, Soldered connection, Pitch: 3.81 mm, No. of poles: 12, 90°, Box
1942560000	SC 3.81/13/90F 3.2SN OR BX	PCB plug-in connector, Male connectors, Soldered connection, Pitch: 3.81 mm, No. of poles: 13, 90°, Box
1942770000	SC 3.81/13/90F 3.2SN BK BX	PCB plug-in connector, Male connectors, Soldered connection, Pitch: 3.81 mm, No. of poles: 13, 90°, Box
1942670000	SC 3.81/13/90F 3.2SN GN BX	PCB plug-in connector, Male connectors, Soldered connection, Pitch: 3.81 mm, No. of poles: 13, 90°, Box
1942570000	SC 3.81/14/90F 3.2SN OR BX	PCB plug-in connector, Male connectors, Soldered connection, Pitch: 3.81 mm, No. of poles: 14, 90°, Box
1942780000	SC 3.81/14/90F 3.2SN BK BX	PCB plug-in connector, Male connectors, Soldered connection, Pitch: 3.81 mm, No. of poles: 14, 90°, Box
1942680000	SC 3.81/14/90F 3.2SN GN BX	PCB plug-in connector, Male connectors, Soldered connection, Pitch: 3.81 mm, No. of poles: 14, 90°, Box
1942580000	SC 3.81/15/90F 3.2SN OR BX	PCB plug-in connector, Male connectors, Soldered connection, Pitch: 3.81 mm, No. of poles: 15, 90°, Box
1942790000	SC 3.81/15/90F 3.2SN BK BX	PCB plug-in connector, Male connectors, Soldered connection, Pitch: 3.81 mm, No. of poles: 15, 90°, Box
1942690000	SC 3.81/15/90F 3.2SN GN BX	PCB plug-in connector, Male connectors, Soldered connection, Pitch: 3.81 mm, No. of poles: 15, 90°, Box
1942590000	SC 3.81/16/90F 3.2SN OR BX	PCB plug-in connector, Male connectors, Soldered connection, Pitch: 3.81 mm, No. of poles: 16, 90°, Box
1793410000	SC 3.81/16/90F 3.2SN BK BX	PCB plug-in connector, Male connectors, Soldered connection, Pitch: 3.81 mm, No. of poles: 16, 90°, Box
1793500000	SC 3.81/16/90F 3.2SN GN BX	PCB plug-in connector, Male connectors, Soldered connection, Pitch: 3.81 mm, No. of poles: 16, 90°, Box
1942600000	SC 3.81/17/90F 3.2SN OR BX	PCB plug-in connector, Male connectors, Soldered connection, Pitch: 3.81 mm, No. of poles: 17, 90°, Box
1942800000	SC 3.81/17/90F 3.2SN BK BX	PCB plug-in connector, Male connectors, Soldered connection, Pitch: 3.81 mm, No. of poles: 17, 90°, Box
1942700000	SC 3.81/17/90F 3.2SN GN BX	PCB plug-in connector, Male connectors, Soldered connection, Pitch: 3.81 mm, No. of poles: 17, 90°, Box
1942610000	SC 3.81/18/90F 3.2SN OR BX	PCB plug-in connector, Male connectors, Soldered connection, Pitch: 3.81 mm, No. of poles: 18, 90°, Box
1942810000	SC 3.81/18/90F 3.2SN BK BX	PCB plug-in connector, Male connectors, Soldered connection, Pitch: 3.81 mm, No. of poles: 18, 90°, Box
1942710000	SC 3.81/18/90F 3.2SN GN BX	PCB plug-in connector, Male connectors, Soldered connection, Pitch: 3.81 mm, No. of poles: 18, 90°, Box
1942620000	SC 3.81/19/90F 3.2SN OR BX	PCB plug-in connector, Male connectors, Soldered connection, Pitch: 3.81 mm, No. of poles: 19, 90°, Box
1942820000	SC 3.81/19/90F 3.2SN BK BX	PCB plug-in connector, Male connectors, Soldered connection, Pitch: 3.81 mm, No. of poles: 19, 90°, Box
1942720000	SC 3.81/19/90F 3.2SN GN BX	PCB plug-in connector, Male connectors, Soldered connection, Pitch: 3.81 mm, No. of poles: 19, 90°, Box

Product catalogue | PCB connection systems | PCB plug-in connectors | Pitch 3.81 mm (0.150 inch) | Plug connectors, solder connection, pitch 3.81 | SC 3.81/90 | SC 3.81/90F

1942630000	SC 3.81/20/90F 3.2SN OR BX	PCB plug-in connector, Male connectors, Soldered connection, Pitch: 3.81 mm, No. of poles: 20, 90°, Box
1942830000	SC 3.81/20/90F 3.2SN BK BX	PCB plug-in connector, Male connectors, Soldered connection, Pitch: 3.81 mm, No. of poles: 20, 90°, Box
1942730000	SC 3.81/20/90F 3.2SN GN BX	PCB plug-in connector, Male connectors, Soldered connection, Pitch: 3.81 mm, No. of poles: 20, 90°, Box