

## Excellent Integrated System Limited

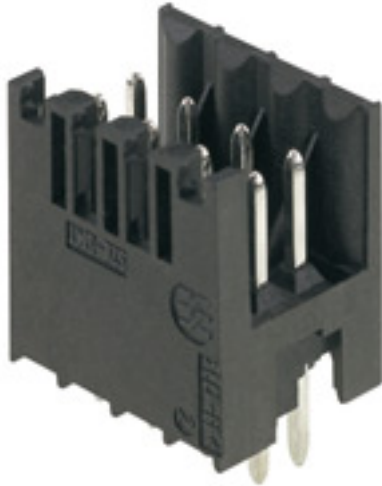
Stocking Distributor

Click to view price, real time Inventory, Delivery & Lifecycle Information:

[Weidmüller](#)  
[1794800000](#)

For any questions, you can email us directly:  
[sales@integrated-circuit.com](mailto:sales@integrated-circuit.com)

Product catalogue | PCB connection systems | PCB plug-in connectors | Pitch 3.50 mm (0.138 inch) 2-row | Plug connectors, THR solder connection | S2L-SMT 3.5/180 | S2L-SMT 3.5/180 Box


**General ordering data**

Order No.	1794800000
Part designation	S2L-SMT3.5/28/180 SN
Version	PCB plug-in connector, Male connectors, Reflow solder connection, Pitch: 3.50 mm, No. of poles: 28, 180°, Box
EAN	4032248231980
Qty.	20 pc(s).

**System parameters**

Fitted to PCB	Reflow solder connection
Outgoing elbow	180°
Pitch	3.5 mm
Pitch in inch	0.138 inch
No. of poles	28
Solder pin length	3.5 mm
Can be coded	Yes
No. of rows	2
No. of solder pins per pole	1
Dia. of fitting hole	1.3 mm
Fitting hole tolerance	+ 0.1 mm
L1 in mm	45.5 mm
L1 in inch	1.791 inch
Electric shock protection to DIN VDE 0470	IP 10
Electric shock protection to DIN VDE 0470	Safe from back-of-hand touch

**Material data**

Insulating material	LCP GF
Colour	black
colour chart	Similar to RAL 9011
Insulating material group	IIIb
Flammability class UL 94	V-0
CTI	>= 175
Contact base material	Copper alloy
Contact surface	tinned

Product catalogue | PCB connection systems | PCB plug-in connectors | Pitch 3.50 mm (0.138 inch) 2-row | Plug connectors, THR solder connection | S2L-SMT 3.5/180 | S2L-SMT 3.5/180 Box

**Material data**

Constant operating temp., min.	-25 °C
Constant operating temp., max.	100
Storage temperature, min.	-25 °C
Storage temperature, max.	55 °C
Max. relative humidity during storage	93 %

**DIN IEC rating data**

Rated current, min. No. pins (Tu=20°C)	10 A
Rated current, max. No. pins (Tu=20°C)	10 A
Rated current, min. No. pins (Tu=40°C)	9 A
Rated current, max. No. pins (Tu=40°C)	8.5 A
Rated voltage for overvoltage class/pollution severity III/3	50 V
Rated impulse withstand voltage for overvoltage class/pollution severity III/3	2.5 kV
Rated voltage for overvoltage class/pollution severity III/2	125 V
Rated impulse withstand voltage for overvoltage class/pollution severity III/2	1.5 kV
Rated voltage for overvoltage class/pollution severity II/2	160 V
Rated impulse withstand voltage for overvoltage class/pollution severity II/2	1.5 kV
Short-time withstand current resistance	3 x 1s with 77 A

**CSA rating data**

Rated voltage (Use group D)	50 V
Rated current (Use group D)	5 A

**UL 1059 rating data**

Rated voltage (Use group D)	150 V
Rated current (Use group D)	10 A

**Approvals**

Approvals institutes


**Downloads**

CAD Library (P-CAD Format - Standard)	S2L-SMT.LIB
---------------------------------------	-------------

**Classifications**

ETIM 2.0	NK
ETIM 3.0	EC001284
eClass 4.1	27-26-07-01
eClass 5.0	27-26-07-01
eClass 5.1	27-26-07-01

### Similar products

Order No.	Part designation	Version
1794690000	S2L-SMT3.5/6/180 SN	PCB plug-in connector, Male connectors, Reflow solder connection, Pitch: 3.50 mm, No. of poles: 6, 180°, Box
1794700000	S2L-SMT3.5/8/180 SN	PCB plug-in connector, Male connectors, Reflow solder connection, Pitch: 3.50 mm, No. of poles: 8, 180°, Box
1794710000	S2L-SMT3.5/10/180 SN	PCB plug-in connector, Male connectors, Reflow solder connection, Pitch: 3.50 mm, No. of poles: 10, 180°, Box
1794720000	S2L-SMT3.5/12/180 SN	PCB plug-in connector, Male connectors, Reflow solder connection, Pitch: 3.50 mm, No. of poles: 12, 180°, Box
1794730000	S2L-SMT3.5/14/180 SN	PCB plug-in connector, Male connectors, Reflow solder connection, Pitch: 3.50 mm, No. of poles: 14, 180°, Box
1794740000	S2L-SMT3.5/16/180 SN	PCB plug-in connector, Male connectors, Reflow solder connection, Pitch: 3.50 mm, No. of poles: 16, 180°, Box
1794750000	S2L-SMT3.5/18/180 SN	PCB plug-in connector, Male connectors, Reflow solder connection, Pitch: 3.50 mm, No. of poles: 18, 180°, Box
1794760000	S2L-SMT3.5/20/180 SN	PCB plug-in connector, Male connectors, Reflow solder connection, Pitch: 3.50 mm, No. of poles: 20, 180°, Box
1794770000	S2L-SMT3.5/22/180 SN	PCB plug-in connector, Male connectors, Reflow solder connection, Pitch: 3.50 mm, No. of poles: 22, 180°, Box
1794780000	S2L-SMT3.5/24/180 SN	PCB plug-in connector, Male connectors, Reflow solder connection, Pitch: 3.50 mm, No. of poles: 24, 180°, Box
1794790000	S2L-SMT3.5/26/180 SN	PCB plug-in connector, Male connectors, Reflow solder connection, Pitch: 3.50 mm, No. of poles: 26, 180°, Box
1794810000	S2L-SMT3.5/30/180 SN	PCB plug-in connector, Male connectors, Reflow solder connection, Pitch: 3.50 mm, No. of poles: 30, 180°, Box
1794820000	S2L-SMT3.5/32/180 SN	PCB plug-in connector, Male connectors, Reflow solder connection, Pitch: 3.50 mm, No. of poles: 32, 180°, Box
1794830000	S2L-SMT3.5/34/180 SN	PCB plug-in connector, Male connectors, Reflow solder connection, Pitch: 3.50 mm, No. of poles: 34, 180°, Box
1794840000	S2L-SMT3.5/36/180 SN	PCB plug-in connector, Male connectors, Reflow solder connection, Pitch: 3.50 mm, No. of poles: 36, 180°, Box