

Excellent Integrated System Limited

Stocking Distributor

Click to view price, real time Inventory, Delivery & Lifecycle Information:

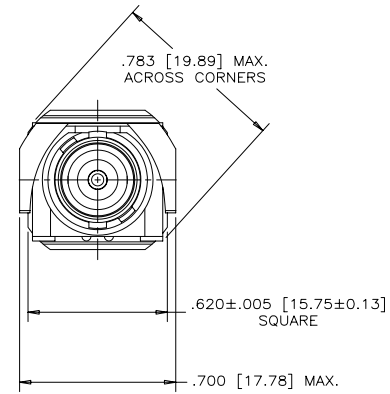
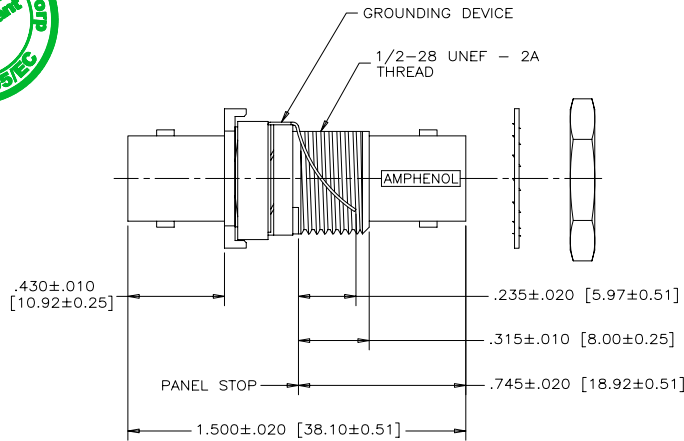
[Amphenol Commercial Products](#)
[456E915](#)

For any questions, you can email us directly:

sales@integrated-circuit.com



REVISIONS			
REV	ECN, ERN NO.	DATE	APPRD.
A	PRODUCT DRAWING (EAR 13136)	JUN18/07	K.L.



MECHANICAL: ALL MATERIALS ARE RoHS COMPLIANT

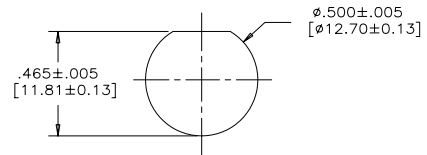
THREADED HOUSING: THERMOPLASTIC, FLAMMABILITY RATING UL94V-0

GROUNDING DEVICE: COPPER ALLOY, NICKEL PLATED

METAL BODY: HIGH STRENGTH ZINC DIECAST, NICKEL PLATED.

CENTER CONTACT: PHOSPHOR BRONZE, PLATED WITH 30 μ" [0.76 MICRONS] GOLD OVER 50 μ" [1.27 MICRONS] NICKEL.

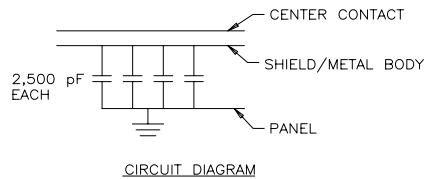
MOUNTING NUT: BRASS, NICKEL PLATED



RECOMMENDED PANEL CUTOUT

ELECTRICAL SPECIFICATION:

CAPACITANCE	10000 pF ±15%
DIELECTRIC WITHSTANDING VOLTAGE	1000 VDC
	500 V RMS
WORKING VOLTAGE	200 VDC
IMPEDANCE	50 OHMS NOMINAL
OPERATING TEMPERATURE	-20°C TO +85°C



AMPHENOL PART NUMBER: 456E-915

DRAWN K. LAMBIE	DATE JUN18/07	Amphenol Canada Corp.	
DESIGNED			
CHECKED		456E SERIES B.N.C. CAPACITIVELY DECOUPLED JACK TO JACK ADAPTER, PANEL MOUNT WITH HARDWARE, 50 OHM, 10,000pF, RoHS COMPLIANT	
I. E. APPRD.			
Q. A. APPRD.			
DWG. APPRD.			
ENG. REL. NO.		DWG C	DRAWING NO. P-456E-915
REF. EAR #13136			REV. A
DIMENSIONS ARE IN INCHES [mm]	CODE ID. NO 03554	SCALE 3/1	WT. --- SURF. --- SHEET 1 OF 1

THIS DOCUMENT CONTAINS PROPRIETARY INFORMATION AND SUCH INFORMATION MAY NOT BE DISCLOSED TO OTHERS FOR ANY PURPOSE OR USED FOR MANUFACTURING PURPOSES WITHOUT WRITTEN PERMISSION FROM AMPHENOL CANADA CORP.