



Distributor of Amphenol Commercial Products: Excellent Integrated System Limited
Datasheet of FCC17A15PB200 - D-Sub Connector Plug, Male Pins 15 Position Through Hole,
Right Angle Solder

Contact us: sales@integrated-circuit.com Website: www.integrated-circuit.com

Excellent Integrated System Limited

Stocking Distributor

Click to view price, real time Inventory, Delivery & Lifecycle Information:

[Amphenol Commercial Products](#)
[FCC17A15PB200](#)

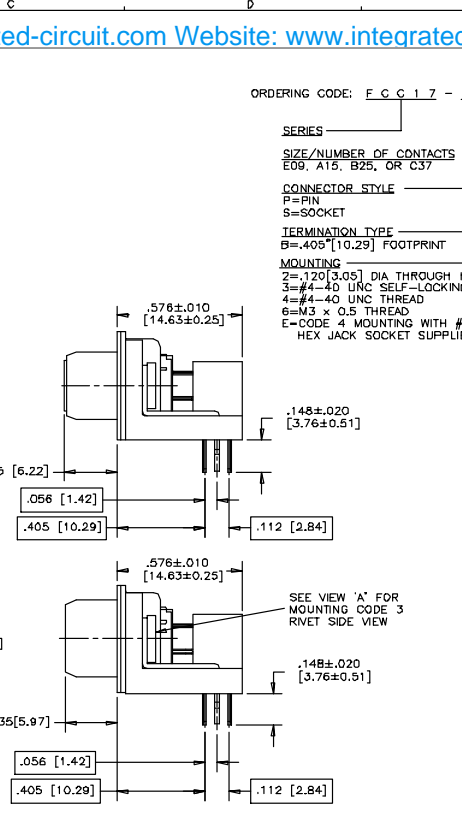
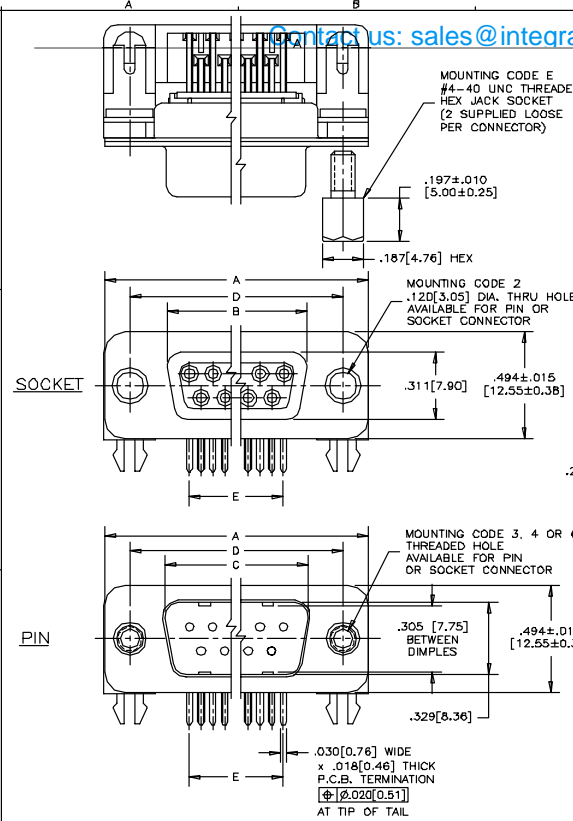
For any questions, you can email us directly:

sales@integrated-circuit.com

Contact us: sales@integrated-circuit.com Website: www.integrated-circuit.com

REVISIONS			
REV.	DESCRIPTION	DATE	APPRD.
A	PRODUCT DRAWING	99/09/23	K.L.

THIS IS A CAD DRAWING. DO NOT MANUALLY REVISE!



NOTES:

- MATERIALS: - SHELLS - TIN PLATED STEEL
 - CONTACTS - PHOSPHOR BRONZE
 PLATED WITH GOLD OVER NICKEL
 ON THE MATING AREA AND
 TIN-LEAD ON THE TERMINALS
 - INSULATOR - ENGINEERING
 THERMOPLASTIC, FLAMMABILITY
 RATING UL94V-0, BLACK.
- CONTACT RESISTANCE: 15 MILLIOHMS MAXIMUM.
- INSULATION RESISTANCE: 3000 MEGOHMS MINIMUM
- CURRENT RATING: 5 AMPS MAXIMUM
 2 AMPS FILTERING MAXIMUM
- OPERATING TEMPERATURE: -40°C TO 85°C.
- TOLERANCE, UNLESS INDICATED OTHERWISE,
 ±.005 [0.13].

SIZE	STYLE	A±.015 [0.38]	B±.005 [0.13]	C±.005 [0.13]	D±.005 [0.13]	E BSC.
E09	PIN	1.213 [30.81]	-----	.666[16.92]	.984 [24.99]	.432 [10.97]
	SOCKET	-----	.643[16.33]	-----	-----	-----
A15	PIN	1.541 [39.14]	-----	.994[25.25]	1.312 [33.32]	.756 [19.20]
	SOCKET	-----	.971[24.66]	-----	-----	-----
B25	PIN	2.098 [53.04]	-----	1.534[38.96]	1.892 [47.04]	1.304 [33.12]
	SOCKET	-----	1.511[38.38]	-----	-----	-----
C37	PIN	2.729 [69.32]	-----	2.182[55.42]	2.500 [63.50]	1.956 [49.68]
	SOCKET	-----	2.159[54.84]	-----	-----	-----

MATERIAL	DRAWN I.ESSAJEE	DATE 99/03/11	Amphenol Canada Corp. TITLE FCC17 FILTERED D-SUB, RIGHT ANGLE .405"[10.29] F/P, PIN & SOCKET - PLASTIC MTG. BRACKET & BOARDLOCK DWG DRAWING NO. P-FCC17-XXXXB-XXOX REV. A
	DESIGNED		
	CHECKED K.LAMBIE	99/09/23	
	I. E. APPRD.		
	Q. A. APPRD.		
FINISH	DWG. APPRD.		
	ENG. REL. NO.		
	REF. EAR C1085B		
	DIMENSIONS ARE IN CODE ID. NO.		
	INCHES [mm]	03554	SCALE N.T.S. SURF. --- SHEET 1 OF 1

THIS DOCUMENT CONTAINS PROPRIETARY INFORMATION AND SUCH INFORMATION
 MAY NOT BE DISCLOSED TO OTHERS FOR ANY PURPOSE OR USED FOR MANUFACTURING
 PURPOSES WITHOUT WRITTEN PERMISSION FROM AMPHENOL CANADA CORP.