

Excellent Integrated System Limited

Stocking Distributor

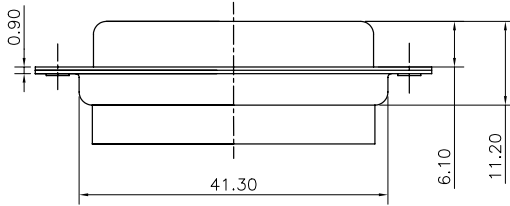
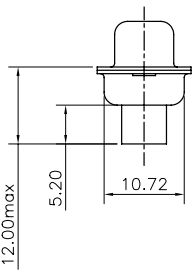
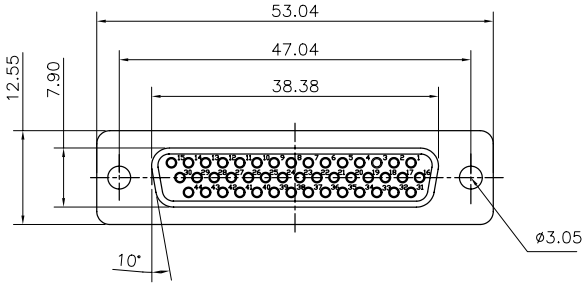
Click to view price, real time Inventory, Delivery & Lifecycle Information:

[Amphenol Commercial Products](#)
[L177HRB44S](#)

For any questions, you can email us directly:

sales@integrated-circuit.com

This document is the property of Amphenol Corporation and is delivered on the express condition that it is not to be disclosed, reproduced or used, in whole or in part, for manufacture or sale by anyone other than Amphenol Corporation without its prior consent, & that no right is granted to disclose or to use any information in this document.



Customer drawing

REVISIONS			
SYM	ECN	DESCRIPTION	DATE
A			11/14/2007

D-SUB TECHNICAL DATA

SHELL : Steel 2.5um (100u") min tin over 1.25um (50u") min nickel
 BODY : Glass filled thermoplastic.
 Flame retardant to UL94 V-0 Color Black

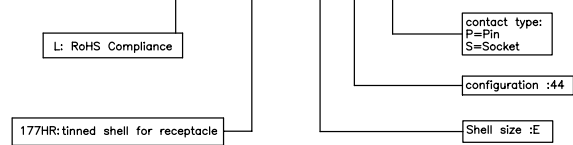
ELECTRICAL : Voltage rating : 500 V RMS at 50 Hz, Current rating 5A.
 Insulation resistance >1000 M Ohms

CLIMATIC : Temperature range -55 °C up to 105°C
 Damp heat 56 days(40 °C-95% HR)

MARKING : Amphenol---...(Series No.)
 Commercial reference
 Manufacturing date

PRODUCT CODE

L 177HR B 44 S



UNLESS OTHERWISE SPECIFIED		APPROVAL		DATE	Amphenol
TOLERANCES		DRAWN	Sunny.Li	11/14/07	
	U.S.	METRIC	CHECKED	Wk.wang	11/14/07
.X	+/-	0.4	DRAWING FILE : PB master/drawing/Dsub		
.XX	+/-	0.30	REMOVE SHARP EDGES		
.XXX	+/-	0.20	ANGLE OF PROJECTION		
FRACTIONS	+/-		SEE NOTES		
ANGLES	+/-	2°	DIMENSIONS		
FOR MATERIALS AND FINISHES		DRAWING FILE :		SIZE	DRAWING NO.
SEE NOTES		PB master/drawing/Dsub		A4	C L177HRB44S
REMOVE SHARP EDGES		ANGLE OF PROJECTION		SCALE	NONE
DIMENSIONS		ANGLE OF PROJECTION		SHEET 1 OF 1	
U.S. INCHES		MM		REV. A	