

Excellent Integrated System Limited

Stocking Distributor

Click to view price, real time Inventory, Delivery & Lifecycle Information:

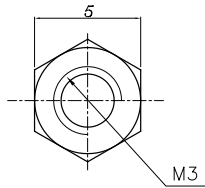
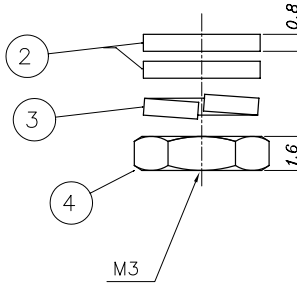
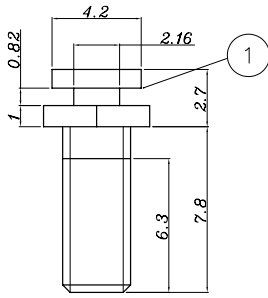
[Amphenol Commercial Products](#)
[L17D53018M3X](#)

For any questions, you can email us directly:

sales@integrated-circuit.com

This document is the property of Amphenol Corporation and is delivered on the express condition that it is not to be disclosed, reproduced or used, in whole or in part, for manufacture or sale by anyone other than Amphenol Corporation without its prior consent, & that no right is granted to disclose or to use any information in this document.

REVISIONS			
SYM	ECN	DESCRIPTION	DATE
A			03/06/08



- ① 10 LOCKING SCREWS
- ② 20 WASHERS
- ③ 10 LOCK WASHERS
- ④ 10 NUTS



Customer drawing

D-SUB TECHNICAL DATA

*Plating : 100u" min. tin over
50u" min. nickel.
delivered separately
1 P/N = 10 sets*

MARKING:
*Amphenol...(Series No.)
Commercial reference
Manufacturing date*

UNLESS OTHERWISE SPECIFIED		APPROVAL	DATE	Amphenol
TOLERANCES		DRAWN	03/06/08	
	U.S.	METRIC	CHECKED	TITLE Accessory for L17D53018M3X
.X +/-	0.50		03/06/08	
.XX +/-	0.30			
.XXX +/-	0.20			
FRACTIONS				
ANGLES +/-	2°			
FOR MATERIALS AND FINISHES		DRAWING FILE :		SIZE: DRAWING NO. REV. A4 C L17D53018M3X A
SEE NOTES		REMOVE SHARP EDGES		
DIMENSIONS		ANGLE OF PROJECTION		SCALE NONE SHEET 1 OF 1
U.S.	INCHES	FIRST ANGLE		
METRIC	MM			