

Excellent Integrated System Limited

Stocking Distributor

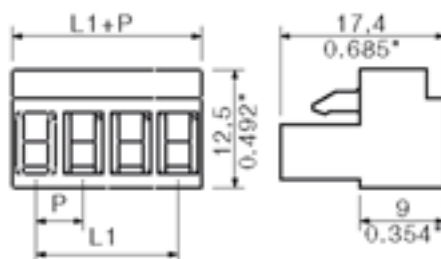
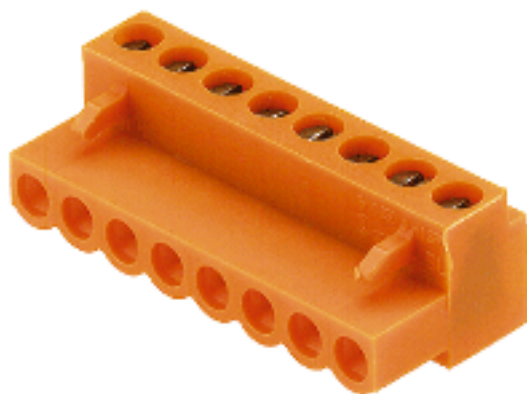
Click to view price, real time Inventory, Delivery & Lifecycle Information:

[Weidmüller](#)
[1716440000](#)

For any questions, you can email us directly:

sales@integrated-circuit.com

Product catalogue | PCB connection systems | PCB plug-in connectors | Pitch 5.00 / 5.08 mm (0.197 / 0.200 inch) | Socket connectors, pressure clamp connection, pitch 5.00/5.08 | BL 5.00/5.08 | BL 5.08


General ordering data

Order No.	1716440000
Part designation	BL 5.08/14 SN OR
Version	PCB plug-in connector, Female connectors, Leaf spring connection, Clamping range, max.: 2.08 mm ² , Pitch: 5.08 mm, No. of poles: 14, 180°, Box
EAN	4008190376482
Qty.	50 pc(s).

System parameters

Conductor connection system	Leaf spring connection
Outgoing direction of conductor	180°
Pitch	5.08 mm
Pitch in inch	0.2 inch
No. of poles	14
No. of rows	1
Screwdriver blade	0.6 x 3.5
Screwdriver blade standard	DIN 5264
Tightening torque, min.	0.4 Nm
Tightening torque, max.	0.5 Nm
Clamping screw	M 2.5
Stripping length	6 mm
L1 in mm	66.04 mm
L1 in inch	2.6 inch
Electric shock protection to DIN VDE 0470	IP 00

Material data

Insulating material	PA
Colour	orange
colour chart	Similar to RAL 2000
Insulating material group	I
Flammability class UL 94	V-2
CTI	>= 200
Contact base material	CuSn
Contact surface	tinned

Material data
Connectable conductors

Clamping range, min.	0.13 mm ²
Clamping range, max.	2.08 mm ²
AWG, min.	26
AWG, max.	14
Solid, min. H05(07) V-U	0.2 mm ²
Solid, max. H05(07) V-U	1.5 mm ²
Flexible, min. H05(07) V-K	0.2 mm ²
Flexible, max. H05(07) V-K	1.5 mm ²
With wire end ferrule, acc. to DIN 46 228/1, min.	0.2 mm ²
With wire end ferrule, acc. to DIN 46 228/1, max.	1.5 mm ²
w. plastic collar ferrule, DIN 46228 pt 4, min.	0.2 mm ²
w. plastic collar ferrule, DIN 46228 pt 4, max.	1 mm ²
Gauge to EN 60999 a x b; ø	2.4 mm x 1.5 mm;

DIN IEC rating data

Rated current, min. No. pins (Tu=20°C)	14 A
Rated current, max. No. pins (Tu=20°C)	12 A
Rated current, min. No. pins (Tu=40°C)	12 A
Rated current, max. No. pins (Tu=40°C)	10 A
Rated voltage for overvoltage class/pollution severity II/2	400 V
Rated voltage for overvoltage class/pollution severity III/2	320 V
Rated voltage for overvoltage class/pollution severity III/3	250 V
Rated impulse withstand voltage for overvoltage class/pollution severity II/2	4 kV
Rated impulse withstand voltage for overvoltage class/pollution severity III/2	4 kV
Rated impulse withstand voltage for overvoltage class/pollution severity III/3	4 kV

CSA rating data

Rated voltage (Use group D)	300 V
Rated current (Use group D)	10 A
AWG conductor (field wiring), min.	26
AWG conductor (field wiring), max.	14

UL 1059 rating data

Rated voltage (Use group D)	300 V
Rated current (Use group D)	10 A
AWG conductor, min.	26
AWG conductor, max.	14

Approvals

Approvals institutes



Classifications

ETIM 2.0	NK
ETIM 3.0	EC001284
eClass 4.1	27-26-07-01
eClass 5.0	27-26-07-01
eClass 5.1	27-26-07-04

Similar products

Order No.	Part designation	Version
1716320000	BL 5.08/2 SN OR	PCB plug-in connector, Female connectors, Leaf spring connection, Clamping range, max.: 2.08 mm ² , Pitch: 5.08 mm, No. of poles: 2, 180°, Box
1716470000	BL 5.08/2 SN SW	PCB plug-in connector, Female connectors, Leaf spring connection, Clamping range, max.: 2.08 mm ² , Pitch: 5.08 mm, No. of poles: 2, 180°, Box
1723830000	BL 5.08/2 SN GN	PCB plug-in connector, Female connectors, Leaf spring connection, Clamping range, max.: 2.08 mm ² , Pitch: 5.08 mm, No. of poles: 2, 180°, Box
1716330000	BL 5.08/3 SN OR	PCB plug-in connector, Female connectors, Leaf spring connection, Clamping range, max.: 2.08 mm ² , Pitch: 5.08 mm, No. of poles: 3, 180°, Box
1716480000	BL 5.08/3 SN SW	PCB plug-in connector, Female connectors, Leaf spring connection, Clamping range, max.: 2.08 mm ² , Pitch: 5.08 mm, No. of poles: 3, 180°, Box
1723840000	BL 5.08/3 SN GN	PCB plug-in connector, Female connectors, Leaf spring connection, Clamping range, max.: 2.08 mm ² , Pitch: 5.08 mm, No. of poles: 3, 180°, Box
1716340000	BL 5.08/4 SN OR	PCB plug-in connector, Female connectors, Leaf spring connection, Clamping range, max.: 2.08 mm ² , Pitch: 5.08 mm, No. of poles: 4, 180°, Box
1716490000	BL 5.08/4 SN SW	PCB plug-in connector, Female connectors, Leaf spring connection, Clamping range, max.: 2.08 mm ² , Pitch: 5.08 mm, No. of poles: 4, 180°, Box
1723850000	BL 5.08/4 SN GN	PCB plug-in connector, Female connectors, Leaf spring connection, Clamping range, max.: 2.08 mm ² , Pitch: 5.08 mm, No. of poles: 4, 180°, Box

Product catalogue | PCB connection systems | PCB plug-in connectors | Pitch 5.00 / 5.08 mm (0.197 / 0.200 inch) | Socket connectors, pressure clamp connection, pitch 5.00/5.08 | BL 5.00/5.08 | BL 5.08

1716350000	BL 5.08/5 SN OR	PCB plug-in connector, Female connectors, Leaf spring connection, Clamping range, max.: 2.08 mm ² , Pitch: 5.08 mm, No. of poles: 5, 180°, Box
1716500000	BL 5.08/5 SN SW	PCB plug-in connector, Female connectors, Leaf spring connection, Clamping range, max.: 2.08 mm ² , Pitch: 5.08 mm, No. of poles: 5, 180°, Box
1723860000	BL 5.08/5 SN GN	PCB plug-in connector, Female connectors, Leaf spring connection, Clamping range, max.: 2.08 mm ² , Pitch: 5.08 mm, No. of poles: 5, 180°, Box
1716360000	BL 5.08/6 SN OR	PCB plug-in connector, Female connectors, Leaf spring connection, Clamping range, max.: 2.08 mm ² , Pitch: 5.08 mm, No. of poles: 6, 180°, Box
1716510000	BL 5.08/6 SN SW	PCB plug-in connector, Female connectors, Leaf spring connection, Clamping range, max.: 2.08 mm ² , Pitch: 5.08 mm, No. of poles: 6, 180°, Box
1723870000	BL 5.08/6 SN GN	PCB plug-in connector, Female connectors, Leaf spring connection, Clamping range, max.: 2.08 mm ² , Pitch: 5.08 mm, No. of poles: 6, 180°, Box
1716370000	BL 5.08/7 SN OR	PCB plug-in connector, Female connectors, Leaf spring connection, Clamping range, max.: 2.08 mm ² , Pitch: 5.08 mm, No. of poles: 7, 180°, Box
1716520000	BL 5.08/7 SN SW	PCB plug-in connector, Female connectors, Leaf spring connection, Clamping range, max.: 2.08 mm ² , Pitch: 5.08 mm, No. of poles: 7, 180°, Box
1723880000	BL 5.08/7 SN GN	PCB plug-in connector, Female connectors, Leaf spring connection, Clamping range, max.: 2.08 mm ² , Pitch: 5.08 mm, No. of poles: 7, 180°, Box
1716380000	BL 5.08/8 SN OR	PCB plug-in connector, Female connectors, Leaf spring connection, Clamping range, max.: 2.08 mm ² , Pitch: 5.08 mm, No. of poles: 8, 180°, Box
1716530000	BL 5.08/8 SN SW	PCB plug-in connector, Female connectors, Leaf spring connection, Clamping range, max.: 2.08 mm ² , Pitch: 5.08 mm, No. of poles: 8, 180°, Box
1723890000	BL 5.08/8 SN GN	PCB plug-in connector, Female connectors, Leaf spring connection, Clamping range, max.: 2.08 mm ² , Pitch: 5.08 mm, No. of poles: 8, 180°, Box
1716390000	BL 5.08/9 SN OR	PCB plug-in connector, Female connectors, Leaf spring connection, Clamping range, max.: 2.08 mm ² , Pitch: 5.08 mm, No. of poles: 9, 180°, Box
1716540000	BL 5.08/9 SN SW	PCB plug-in connector, Female connectors, Leaf spring connection, Clamping range, max.: 2.08 mm ² , Pitch: 5.08 mm, No. of poles: 9, 180°, Box
1723900000	BL 5.08/9 SN GN	PCB plug-in connector, Female connectors, Leaf spring connection, Clamping range, max.: 2.08 mm ² , Pitch: 5.08 mm, No. of poles: 9, 180°, Box
1716400000	BL 5.08/10 SN OR	PCB plug-in connector, Female connectors, Leaf spring connection, Clamping range, max.: 2.08 mm ² , Pitch: 5.08 mm, No. of poles: 10, 180°, Box
1716550000	BL 5.08/10 SN SW	PCB plug-in connector, Female connectors, Leaf spring connection, Clamping range, max.: 2.08 mm ² , Pitch: 5.08 mm, No. of poles: 10, 180°, Box

Product catalogue | PCB connection systems | PCB plug-in connectors | Pitch 5.00 / 5.08 mm (0.197 / 0.200 inch) | Socket connectors, pressure clamp connection, pitch 5.00/5.08 | BL 5.00/5.08 | BL 5.08

1723910000	BL 5.08/10 SN GN	PCB plug-in connector, Female connectors, Leaf spring connection, Clamping range, max.: 2.08 mm ² , Pitch: 5.08 mm, No. of poles: 10, 180°, Box
1716410000	BL 5.08/11 SN OR	PCB plug-in connector, Female connectors, Leaf spring connection, Clamping range, max.: 2.08 mm ² , Pitch: 5.08 mm, No. of poles: 11, 180°, Box
1716560000	BL 5.08/11 SN SW	PCB plug-in connector, Female connectors, Leaf spring connection, Clamping range, max.: 2.08 mm ² , Pitch: 5.08 mm, No. of poles: 11, 180°, Box
1716420000	BL 5.08/12 SN OR	PCB plug-in connector, Female connectors, Leaf spring connection, Clamping range, max.: 2.08 mm ² , Pitch: 5.08 mm, No. of poles: 12, 180°, Box
1716570000	BL 5.08/12 SN SW	PCB plug-in connector, Female connectors, Leaf spring connection, Clamping range, max.: 2.08 mm ² , Pitch: 5.08 mm, No. of poles: 12, 180°, Box
1723930000	BL 5.08/12 SN GN	PCB plug-in connector, Female connectors, Leaf spring connection, Clamping range, max.: 2.08 mm ² , Pitch: 5.08 mm, No. of poles: 12, 180°, Box
1716430000	BL 5.08/13 SN OR	PCB plug-in connector, Female connectors, Leaf spring connection, Clamping range, max.: 2.08 mm ² , Pitch: 5.08 mm, No. of poles: 13, 180°, Box
1716580000	BL 5.08/13 SN SW	PCB plug-in connector, Female connectors, Leaf spring connection, Clamping range, max.: 2.08 mm ² , Pitch: 5.08 mm, No. of poles: 13, 180°, Box
1716590000	BL 5.08/14 SN SW	PCB plug-in connector, Female connectors, Leaf spring connection, Clamping range, max.: 2.08 mm ² , Pitch: 5.08 mm, No. of poles: 14, 180°, Box
1723950000	BL 5.08/14 SN GN	PCB plug-in connector, Female connectors, Leaf spring connection, Clamping range, max.: 2.08 mm ² , Pitch: 5.08 mm, No. of poles: 14, 180°, Box
1716450000	BL 5.08/15 SN OR	PCB plug-in connector, Female connectors, Leaf spring connection, Clamping range, max.: 2.08 mm ² , Pitch: 5.08 mm, No. of poles: 15, 180°, Box
1716600000	BL 5.08/15 SN SW	PCB plug-in connector, Female connectors, Leaf spring connection, Clamping range, max.: 2.08 mm ² , Pitch: 5.08 mm, No. of poles: 15, 180°, Box
1716460000	BL 5.08/16 SN OR	PCB plug-in connector, Female connectors, Leaf spring connection, Clamping range, max.: 2.08 mm ² , Pitch: 5.08 mm, No. of poles: 16, 180°, Box
1716610000	BL 5.08/16 SN SW	PCB plug-in connector, Female connectors, Leaf spring connection, Clamping range, max.: 2.08 mm ² , Pitch: 5.08 mm, No. of poles: 16, 180°, Box
1723970000	BL 5.08/16 SN GN	PCB plug-in connector, Female connectors, Leaf spring connection, Clamping range, max.: 2.08 mm ² , Pitch: 5.08 mm, No. of poles: 16, 180°, Box