

Excellent Integrated System Limited

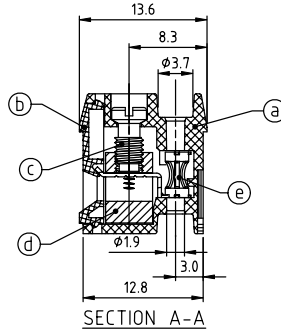
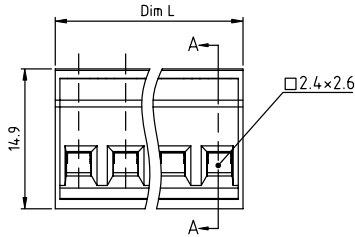
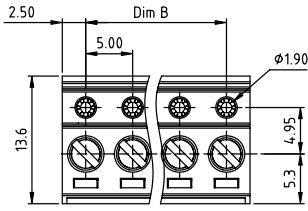
Stocking Distributor

Click to view price, real time Inventory, Delivery & Lifecycle Information:

[FCI](#)
[EO02010200JOG](#)

For any questions, you can email us directly:
sales@integrated-circuit.com

PRODUCT NUMBER	PITCH
EOxx01x200J0G	5.00 mm



Material

- Item ① Terminal housing: Thermoplastic (UL94V-0)
- Item ② Terminal cover: Thermoplastic (UL94V-0)
- Item ③ Terminal screw: Steel Zinc plating "-" type
- Item ④ Clamp: Brass, Ni plated
- Item ⑤ Female contact: PhBz, Tin plated

Electrical

- Voltage rating: 300V
- Current rating: 15A
- Wire range:
- Solid wire(AWG): 12-28
- Stranded wire(AWG): 12-28
- Torque: 4.5Lb-In
- Screw: M3
- Wire strip length: 5-6mm
- Withstanding Voltage: 1.6KV
- Operating temperature: -40°C to +115°C
- Safety Approval: us

PART NO.: EO xx 01 x 2 00J0 G

N=Number of poles

Dim L=Nx5.00
Dim B=(N-1)x5.00

POLES	Tolerance
2P-5P	±0.10
6P-9P	±0.15
10P-12P	±0.20

Solid block	No. of poles	Color	RoHS compliant (lead<4%) In copper Alloy
0	2	Black (RAL9005)	
02	2	Red (RAL3001/D)	
03	3	Orange(RAL2011/P)	
...	
12	12	Green(RAL6018/T)	
		Blue (RAL5015/A)	
		Grey(RAL7035/D)	
		White(RAL1102)	
		C Green(RAL6018/U)	

mat'l. code	surface ASME Y14.5	tolerance ASME Y14.5	projection 	product family TERMINAL BLOCK
ltr	ecn	no	dr	date
tolerances unless otherwise specified				title TERMINAL BLOCK PLUGGABLE, 180D WIRE INLET, SOLID BLOCK
angles	mm	X.±0.5	X.X±0.3	X.XX±0.1
X'±1'	scale	dr	EVIN ZHONG	041714
		enrg	EVIN ZHONG	041714
		chr	HANKE FENG	041714
		appd	SHI JUN	041714
sheet index	revision sheet	A	1	
dwg no		sheet 1 of 1		size
E0xx01x200J0G				A4
type		CUSTOMER Drawing		