

## Excellent Integrated System Limited

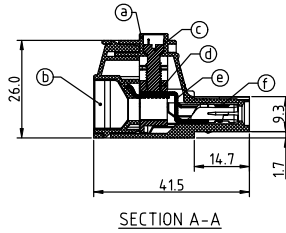
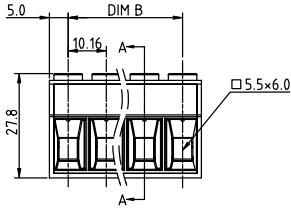
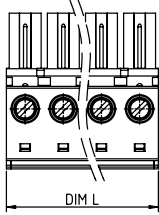
Stocking Distributor

Click to view price, real time Inventory, Delivery & Lifecycle Information:

[FCI](#)  
[EV02615000J0G](#)

For any questions, you can email us directly:  
[sales@integrated-circuit.com](mailto:sales@integrated-circuit.com)

PRODUCT NUMBER	PITCH
EVxx61x000J0G	10.16mm



**Material**

- Item①Terminal body:Thermoplastic (UL94V-0)
- Item②Terminal cover:Thermoplastic (UL94V-0)
- Item③Terminal screw :Steel Cr3+ Zinc plating "-" slot type
- Item④Clamp:Brass, Ni plated
- Item⑤Femal contact pin:Copper Tin plated
- Item⑥Wire guard :Stainless Steel

**Electrical cULus / IEC**

- Voltage rating: 300VAC / 1000VAC
- Current rating: 55A / 76A
- Solid wire (AWG):6-20 / 0.5-16mm<sup>2</sup>
- Stranded wire(AWG): 6-20 / 0.5-16mm<sup>2</sup>
- Torque: 10.4 Lb-In / 1.2 N.m
- Screw: M4.5
- Wire strip length: 13-14mm
- Withstanding Voltage: 1.6KV / 8KV
- Operating temperature: -40°C to +115°C
- Safety Approval: cULus

PART NO.: EV xx 61 x 0 00J0 G

Solid block	0	Black (RAL9005)	RoHS compliant (lead<4%) In copper Alloy
No. of poles	2	Red (RAL3001/D)	
02 2 poles	3	Orange(RAL2011/P)	
03 3 poles	4	Yellow(RAL1018/A)	
...	...	5 Green(RAL6018/T)	
12 12 poles	6	Blue (RAL5015/A)	
	8	Grey(RAL7035/D)	
	9	White(RAL1102)	
	C	Green(RAL6018/U)	

**DIMENSION**

Dim L	(N-1)×10.16+10.0
Dim B	(N-1)×10.16

N=Number of poles

Poles	Tolerance
2p-6p	±0.20
7p-12p	±0.30

mat'l. code	surface ASME Y14.5	tolerance ASME Y14.5	projection	product family TERMINAL BLOCK
ltr	ecn	no	dr	date
tolerances unless otherwise specified				title TERMINAL BLOCK
angles	X.±0.5		MM	PLUGGABLE PLUG,WITHOUT FLANGE
X'±1'	X.X±0.3		scale	sheet 1 of 1
dr	EVIN ZHONG	041814	FCI	size A4
enfr	EVIN ZHONG	041814		dwg no EVxx61x000J0G
chr	HANKE FENG	041814		type CUSTOMER Drawing
appd	SHI JUN	041814		
sheet index	revision sheet	A 1		