

Excellent Integrated System Limited

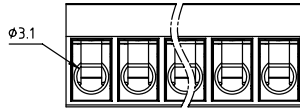
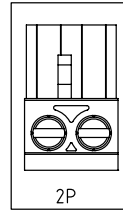
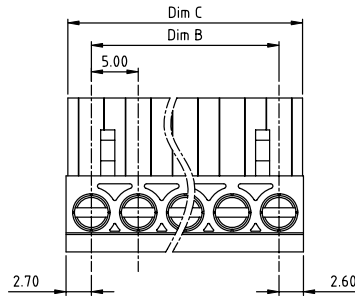
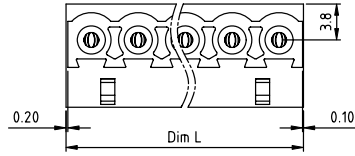
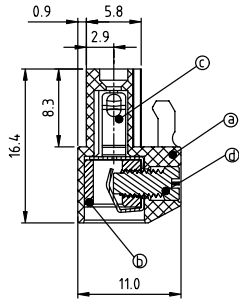
Stocking Distributor

Click to view price, real time Inventory, Delivery & Lifecycle Information:

[FCI](#)
[EZ02715000J0G](#)

For any questions, you can email us directly:
sales@integrated-circuit.com

PRODUCT NUMBER	PITCH
EZxx71x000J0G	5.00 mm



- Material:
- Item ① Terminal(housing): Thermoplastic (UL94V-0)
 - Item ② Clamp: Brass(CuZn) Ni plated
 - Item ③ Female contact: PhBz Tin plated
 - Item ④ Terminal Screw: Steel zinc plated.

- Electrical: cULus
- Voltage rating: 300 V
 - Current rating: 15 A
 - Wire range:
 - Solid wire(AWG):12-22
 - Stranded wire(AWG):12-22
 - Torque: 4.3 Lb-In
 - Screw:M3
 - Wire strip length:7-8 mm
 - Withstanding Voltage:1.6KV
 - Operating temperature:-40°C to +115°C
 - Safety Approval: cULus

N=NUMBER OF POLES

Dim L=N×5.0+0.3
Dim B=(N-1)×5.0
Dim C=N×5.0

POLES	Tolerance
2P-6P	±0.15
7P-12P	±0.20
13P-18P	±0.25
19P-24P	±0.30

PART NO.: EZ xx 71 x 0 00J0 G

	Color	RoHS compliant (lead=4%) In copper Alloy
Solid block	0 Black (RAL9005)	
No. of poles	2 Red (RAL3001/D)	
02	3 Orange(RAL2011/P)	
03	4 Yellow(RAL1018/A)	
...	5 Green(RAL6018/T)	
...	6 Blue (RAL5015/A)	
...	8 Grey(RAL7035/D)	
...	9 White(RAL1102)	
...	C Green(RAL6018/U)	

mat'l. code	surface ASME Y14.5	tolerance ASME Y14.5	projection	product family
ltr	ecn	no	dr	date
tolerances unless otherwise specified				TERMINAL BLOCK
angles	X.±0.5		MM	title
X'±1'	X.X±0.3		scale	TERMINAL BLOCK
dr	EVIN ZHONG	041814	FCI	PLUGGABLE PLUG, WITHOUT FLANGE
enfr	EVIN ZHONG	041814	dwg no	sheet 1 of 1
chr	HANKE FENG	041814	EZxx71x000J0G	A4
appd	SHI JUN	041814	type	CUSTOMER Drawing
sheet index	revision sheet	A 1		