

Excellent Integrated System Limited

Stocking Distributor

Click to view price, real time Inventory, Delivery & Lifecycle Information:

[FCI](#)
[H502005100J0G](#)

For any questions, you can email us directly:
sales@integrated-circuit.com

PRODUCT NUMBER	PITCH
H5xx00x100J0G	7.62 mm

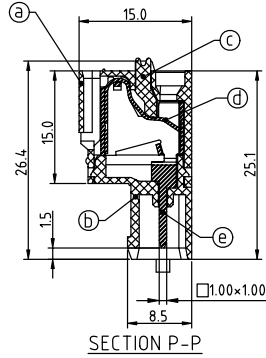
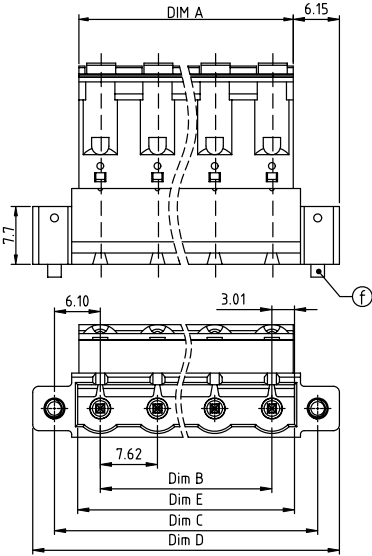
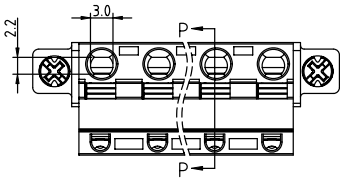
Dimension

DIM A	(N-1)×7.62+5.7
DIM B	(N-1)×7.62
DIM C	(N-1)×7.62+12.2
DIM D	(N-1)×7.62+18.0
DIM E	(N-1)×7.62+6.02

N=Number of poles	
POLES	Tolerance
2p-6p	±0.20
7p-12p	±0.30
13p-16p	±0.40

PART NO.: H5 xx 0 0 x 1 00J0 G

Solid block	0	Color	0	Black (RAL9005)	RoHS compliant (lead<4%)
No. of poles	2		2	Red (RAL3001/D)	In copper Alloy
02	2 poles		3	Orange(RAL2011/P)	
03	3 poles		4	Yellow(RAL1018/A)	
...	...		5	Green(RAL6018/T)	
16	16 poles		6	Blue (RAL5015/A)	
			8	Grey(RAL7035/D)	
			9	White(RAL1102)	
			C	Green(RAL6018/U)	



Material:

- Item@Top body:Thermoplastic (UL94V-0)
- Item@Bottom body:Thermoplastic (UL94V-0)
- Item@Terminal lever:Thermoplastic (UL94V-0) Orange (RAL2001/P)
- Item@Spring Clamp:Stainless Steel
- Item@Male contact pin:PhBz (CuSn) Tin plated
- Item@Flange screw: Steel Zinc plating M2.5*+/-" combination type

Electrical

- Voltage rating: 300V
- Current rating: 10A
- Solid wire(AWG): 12-26
- Stranded wire(AWG): 12-26
- Wire strip length: 9-10mm
- Withstanding Voltage: 1.6KV
- Operating temperature: -40°C to +115°C
- Safety Approval: cULus

mat'l. code	surface ASME Y14.5	tolerance ASME Y14.5	projection	product family
ltr ecn no dr date	tolerances unless otherwise specified	angles	MM	TERMINAL BLOCK
	X.±0.5	X'±1'	scale	title
	X.X±0.3	X.XX±0.1	FCI	TERMINAL BLOCK SPRING CLAMP PLUGGABLE PLUG MALE CONNECTOR FLANGE WITH SCREW
dr	EVIN ZHONG 051714		dwg no	sheet 1 of 1 size
enrg	EVIN ZHONG 051714		H5xx00x100J0G	A4
chr	HANKE FENG 051714		type	CUSTOMER Drawing
appd	SHI JUN 051714			
sheet index	revision sheet	A 1		