

Excellent Integrated System Limited

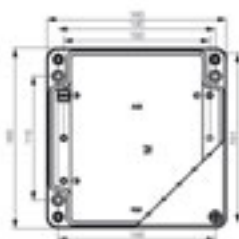
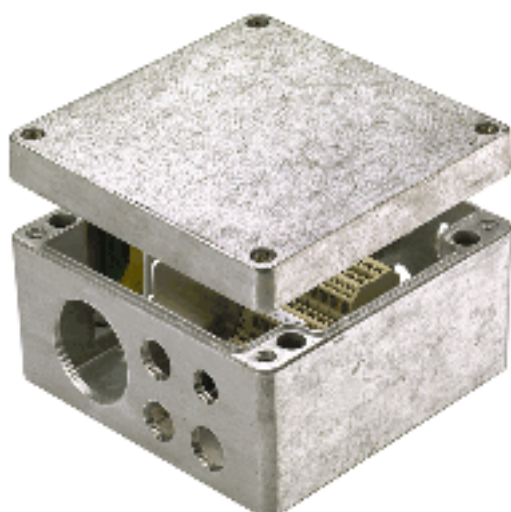
Stocking Distributor

Click to view price, real time Inventory, Delivery & Lifecycle Information:

[Weidmüller](#)
[1565290000](#)

For any questions, you can email us directly:

sales@integrated-circuit.com


General ordering data

Order No.	1565290000
Part designation	KLIPPON K52
Version	Housings, 91 mm, 160 mm, 160 mm, Aluminium alloy (AlSi12)
EAN	4008190030070
Qty.	1 pc(s).

Dimensions

Fixing dimension, width	140 mm
Height	91 mm
Length	160 mm
Width	160 mm

General details

Cover fixing	4 stainless steel M6 screws
Enclosure fixing	Holes 6 mm
Integral fixing	threaded holes M6
Resistance to shocks	10 J
Sealing material	Neoprene
Version cover	closed
Surface finish	untreated
Class of protection to EN 60529	IP 66 and IP 67
Weight	1,480 g
Ambient temperature, min.	-30 °C
Ambient temperature, max.	80 °C

Screwed cable glands top/bottom

M 12	14
M 16	8
M 20	5
M 25	3
M 32	2
M 40	1
Side of enclosure	Top / Bottom

Screwed cable glands top/bottom

Screwed cable glands, left/right

M12	8
M16	5
M20	3
M25	2
M32	1
On housing side	left / right

Approvals

Approvals institutes



Classifications

ETIM 2.0	EC000058
ETIM 3.0	EC000058
eClass 4.1	27-14-12-06
eClass 5.0	27-14-91-07
eClass 5.1	27-14-91-07

Similar products

Order No.	Part designation	Version
9529230000	KLIPPON K52 RAL7001	Housings, 91 mm, 160 mm, 160 mm, Aluminium alloy (AlSi12)