

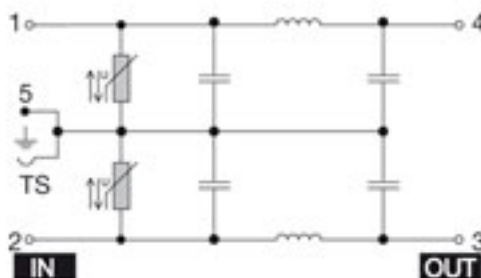
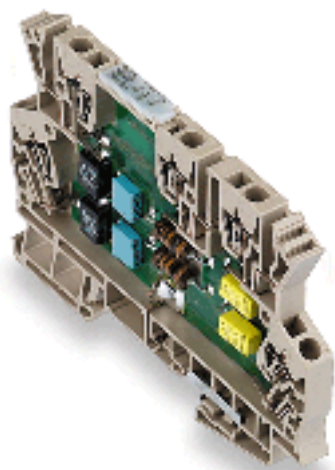
## Excellent Integrated System Limited

Stocking Distributor

Click to view price, real time Inventory, Delivery & Lifecycle Information:

[Weidmüller](#)  
[8449100000](#)

For any questions, you can email us directly:  
[sales@integrated-circuit.com](mailto:sales@integrated-circuit.com)


**General ordering data**

Order No.	8449100000
Part designation	MCZ OVP FILTER 24V 0,5A
Version	Surge protection for instrumentation and control, {Reference (AttributeDefinition) not found: pattr2500833906422}, Rated voltage: 24 V DC
EAN	4008190120481
Qty.	10 pc(s).

**Clamped conductors**

Flexible w. ferrule, min. (DIN 46228-1)	0.5 mm <sup>2</sup>
Flexible, max.	1.5 mm <sup>2</sup>
Flexible, min.	0.5 mm <sup>2</sup>
Rated cross-section for solid/flexible with ferrule	1.5 mm <sup>2</sup>
Rated cross-section, max. ferrules	1 mm <sup>2</sup>
Type of connection	Tension clamp connection

**General data**

Design	Terminal
Storage temperature	-40 ... 85°C
Ambient temperature (operational)	-40 ... 60°C

**Insulation coordination acc. to EN 50178**

Overvoltage category	III
Pollution severity	2

**Interference voltage**

Protection level on output side sym., input 1 kV/ μs, typ.	140 V
Protection level on output side sym., input 8/20 μs, typ.	190 V
Protection level on output side unsym., input 1kV/ μs, typ.	70 V
Protection level on output side unsym., input 8/20 μs, typ.	100 V

**Interference voltage**
**Technical data**

Limiting frequency (-3 dB) at load resistance	50 kHz 50 Ω
Rated voltage (AC/DC)	24 V
Rated voltage (DC), max.	26 V
Rated voltage (AC)	24 V
Volume resistance	1.5 Ω
Rated voltage, max.	30 V AC
Rated current	0.5 A
Rated voltage	24 V DC
Rated voltage (DC)	24 V
Max. continuous voltage, U <sub>c</sub> (AC)	26.4 V
Operating current, I <sub>max</sub>	0.5 A
Discharge current, max. (8/20 μs)	0.5 kA
Sparkover time	≤ 100 ps
Fuse, max.	0.5 A

**Dimensions**

Clamping range, nom.	1.5 mm <sup>2</sup>
Length	91 mm
Height	63.5 mm
Width	6 mm

**Approvals**

Approvals institutes


**Classifications**

ETIM 2.0	EC000943
ETIM 3.0	EC000943
eClass 4.1	27-14-11-27
eClass 5.0	27-14-11-27
eClass 5.1	27-14-11-27

**Similar products**

Order No.	Part designation	Version
8948600000	MCZ OVP HF 24V 0,3A	Surge protection for instrumentation and control, {Reference (AttributeDefinition) not found: pattr2500833906422}
8448920000	MCZ OVP CL 24VDC 0,5A	Surge protection for instrumentation and control, {Reference (AttributeDefinition) not found: pattr2500833906422}, Rated voltage: 24 V DC
8448940000	MCZ OVP SL 24VDC 0,5A	Surge protection for instrumentation and control, {Reference (AttributeDefinition) not found: pattr2500833906422}, Rated voltage: 24 V DC

8448960000	MCZ OVP CL 24VUC 1,25A	Surge protection for instrumentation and control, {Reference (AttributeDefinition) not found: pattr2500833906422}, Rated voltage: 24 V
8448970000	MCZ OVP SL 24VUC 1,25A	Surge protection for instrumentation and control, {Reference (AttributeDefinition) not found: pattr2500833906422}, Rated voltage: 24 V
8472880000	MCZ OVP CL 24VAC 0,5A	Surge protection for instrumentation and control, {Reference (AttributeDefinition) not found: pattr2500833906422}, Rated voltage: 24 V DC
8704240000	MCZ OVP CL FG 24VAC 0,5A	Surge protection for instrumentation and control, {Reference (AttributeDefinition) not found: pattr2500833906422}, Rated voltage: 24 V
8823280000	MCZ OVP SL FG 24VAC 0,5A	Surge protection for instrumentation and control, {Reference (AttributeDefinition) not found: pattr2500833906422}, Rated voltage: 24 V
8449150000	MCZ OVP TAZ DIODE 24VDC	Surge protection for instrumentation and control, {Reference (AttributeDefinition) not found: pattr2500833906422}, Rated voltage: 24 V
8449160000	MCZ OVP TAZ DIODE 24VUC	Surge protection for instrumentation and control, {Reference (AttributeDefinition) not found: pattr2500833906422}, Rated voltage: 24 V DC
8449140000	MCZ OVP VARISTOR S10K30	Surge protection for instrumentation and control, {Reference (AttributeDefinition) not found: pattr2500833906422}, Rated voltage: 24 V
8449130000	MCZ OVP Gas charge eliminator 90V	Surge protection for instrumentation and control, {Reference (AttributeDefinition) not found: pattr2500833906422}, Rated voltage: 24 V