

Excellent Integrated System Limited

Stocking Distributor

Click to view price, real time Inventory, Delivery & Lifecycle Information:

[Vishay Semiconductor/Diodes Division](#)
[VS-GB75SA120UP](#)

For any questions, you can email us directly:

sales@integrated-circuit.com



www.vishay.com

VS-GB75SA120UP

Vishay Semiconductors

Insulated Gate Bipolar Transistor (Ultrafast IGBT), 75 A



SOT-227

FEATURES

- NPT Generation V IGBT technology
- Square RBSOA
- Positive $V_{CE(on)}$ temperature coefficient
- Fully isolated package
- Speed 8 kHz to 60 kHz
- Very low internal inductance (≤ 5 nH typical)
- Industry standard outline
- Material categorization: For definitions of compliance please see www.vishay.com/doc?99912



RoHS
COMPLIANT

PRODUCT SUMMARY

V_{CES}	1200 V
I_C DC	75 A at 95 °C
$V_{CE(on)}$ typical at 75 A, 25 °C	3.3 V
Package	SOT-227

BENEFITS

- Designed for increased operating efficiency in power conversion: UPS, SMPS, welding, induction heating
- Easy to assemble and parallel
- Direct mounting on heatsink
- Plug-in compatible with other SOT-227 packages
- Low EMI, requires less snubbing

ABSOLUTE MAXIMUM RATINGS

PARAMETER	SYMBOL	TEST CONDITIONS	MAX.	UNITS
Collector to emitter voltage	V_{CES}		1200	V
Continuous collector current	I_C	$T_C = 25$ °C	131	A
		$T_C = 80$ °C	89	
Pulsed collector current	I_{CM}		200	
Clamped inductive load current	I_{LM}		200	
Gate to emitter voltage	V_{GE}		± 20	V
Power dissipation	P_D	$T_C = 25$ °C	658	W
		$T_C = 80$ °C	369	
Isolation voltage	V_{ISOL}	Any terminal to case, $t = 1$ min	2500	V

ELECTRICAL SPECIFICATIONS ($T_J = 25$ °C unless otherwise specified)

PARAMETER	SYMBOL	TEST CONDITIONS	MIN.	TYP.	MAX.	UNITS
Collector to emitter breakdown voltage	$V_{BR(CES)}$	$V_{GE} = 0$ V, $I_C = 250$ μ A	1200	-	-	V
Collector to emitter voltage	$V_{CE(on)}$	$V_{GE} = 15$ V, $I_C = 75$ A	-	3.3	3.8	
		$V_{GE} = 15$ V, $I_C = 75$ A, $T_J = 125$ °C	-	3.6	3.9	
Gate threshold voltage	$V_{GE(th)}$	$V_{CE} = V_{GE}$, $I_C = 250$ μ A	4	5	6	
Temperature coefficient of threshold voltage	$V_{GE(th)}/\Delta T_J$	$V_{CE} = V_{GE}$, $I_C = 1$ mA (25 °C to 125 °C)	-	- 12	-	mV/°C
Collector to emitter leakage current	I_{CES}	$V_{GE} = 0$ V, $V_{CE} = 1200$ V	-	3	250	μ A
		$V_{GE} = 0$ V, $V_{CE} = 1200$ V, $T_J = 150$ °C	-	4	20	mA
Gate to emitter leakage current	I_{GES}	$V_{GE} = \pm 20$ V	-	-	± 200	nA



SWITCHING CHARACTERISTICS (T _J = 25 °C unless otherwise specified)							
PARAMETER	SYMBOL	TEST CONDITIONS		MIN.	TYP.	MAX.	UNITS
Total gate charge (turn-on)	Q _g	I _C = 50 A, V _{CC} = 600 V, V _{GE} = 15 V		-	690	-	nC
Gate to emitter charge (turn-on)	Q _{ge}			-	65	-	
Gate to collector charge (turn-on)	Q _{gc}			-	250	-	
Turn-on switching loss	E _{on}	I _C = 75 A, V _{CC} = 600 V, V _{GE} = 15 V, R _g = 5 Ω, L = 500 μH	Energy losses include tail and diode recovery (see fig. 18)	-	1.53	-	mJ
Turn-off switching loss	E _{off}			-	1.76	-	
Total switching loss	E _{tot}			-	3.29	-	
Turn-on switching loss	E _{on}	-		2.49	-		
Turn-off switching loss	E _{off}	-		3.45	-		
Total switching loss	E _{tot}	-		5.94	-		
Turn-on delay time	t _{d(on)}	I _C = 75 A, V _{CC} = 600 V, V _{GE} = 15 V, R _g = 5 Ω, L = 500 μH, T _J = 125 °C		-	281	-	ns
Rise time	t _r			-	45	-	
Turn-off delay time	t _{d(off)}			-	300	-	
Fall time	t _f			-	126	-	
Reverse bias safe operating area	RBSOA	T _J = 150 °C, I _C = 200 A, R _g = 22 Ω, V _{GE} = 15 V to 0 V, V _{CC} = 900 V, V _P = 1200 V, L = 500 μH		Fullsquare			

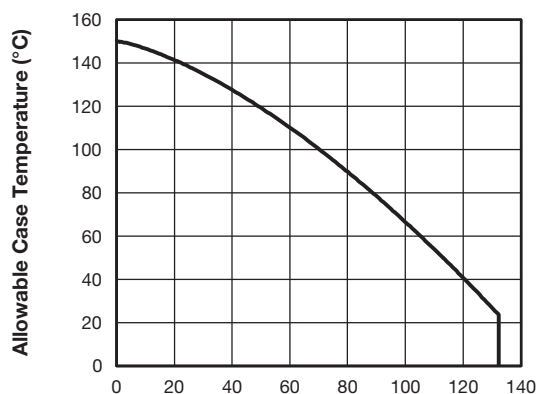
THERMAL AND MECHANICAL SPECIFICATIONS						
PARAMETER	SYMBOL		MIN.	TYP.	MAX.	UNITS
Junction and storage temperature range	T_J , T_{STG}		- 40	-	150	$^{\circ}\text{C/W}$
Thermal resistance, junction to case	R_{thJC}		-	-	0.19	
Thermal resistance case to heatsink	R_{thCS}	Flat, greased surface	-	0.05	-	
Weight			-	30	-	g
Mounting torque			-	-	1.3	Nm
Case style			SOT-227			



www.vishay.com

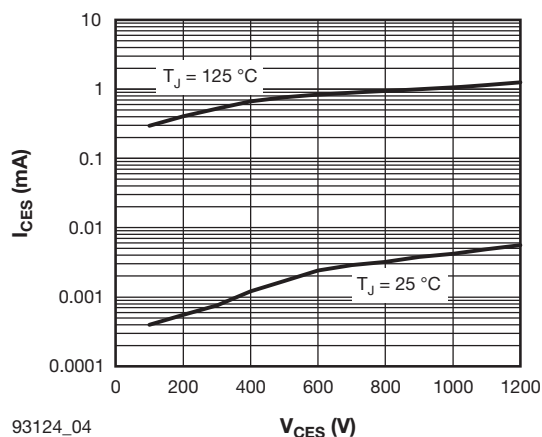
VS-GB75SA120UP

Vishay Semiconductors



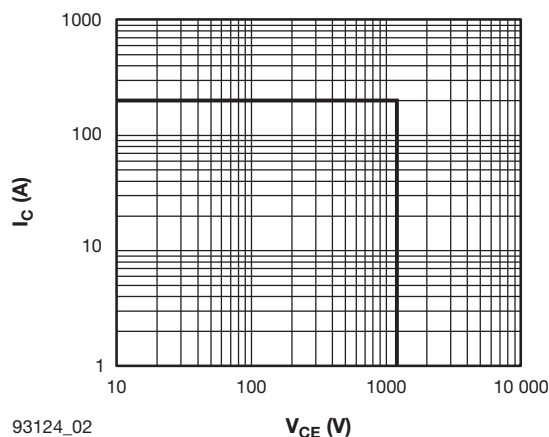
93124_01 **I_C - Continuous Collector Current (A)**

Fig. 1 - Maximum DC IGBT Collector Current vs. Case Temperature



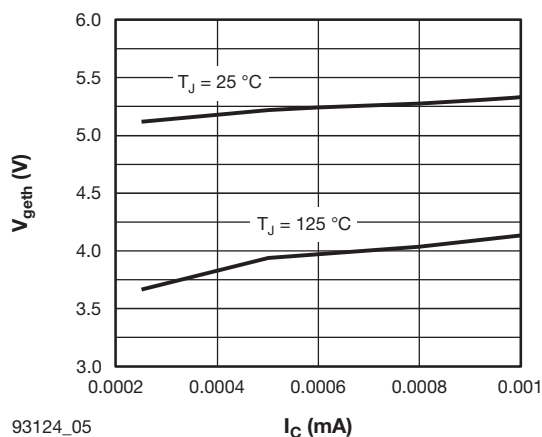
93124_04 **V_{CES} (V)**

Fig. 4 - Typical IGBT Zero Gate Voltage Collector Current



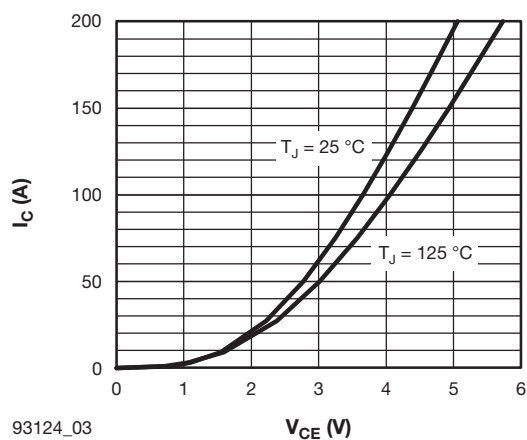
93124_02

Fig. 2 - IGBT Reverse Bias SOA
 $T_J = 150\text{ }^{\circ}\text{C}$, $V_{GE} = 15\text{ V}$



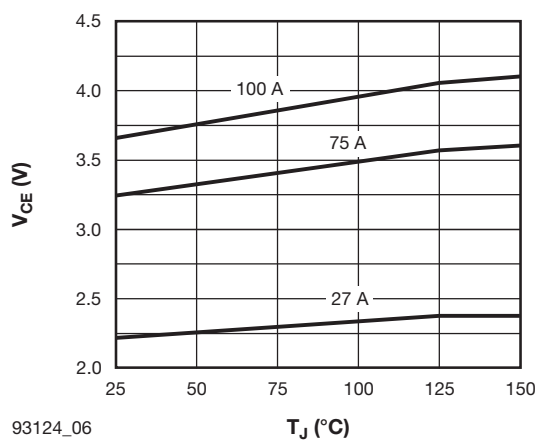
93124_05

Fig. 5 - Typical IGBT Threshold Voltage



93124_03

Fig. 3 - Typical IGBT Collector Current Characteristics



93124_06

Fig. 6 - Typical IGBT Collector to Emitter Voltage vs. Junction Temperature, $V_{GE} = 15\text{ V}$



www.vishay.com

VS-GB75SA120UP

Vishay Semiconductors

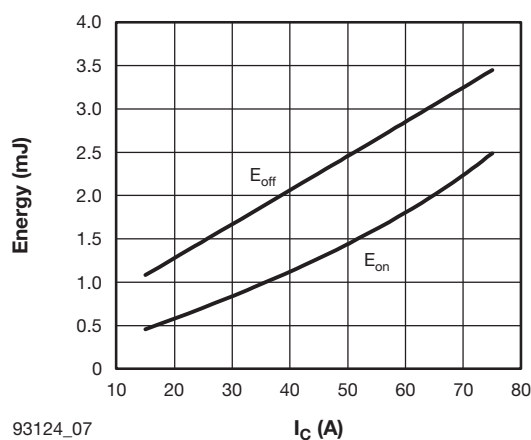


Fig. 7 - Typical IGBT Energy Loss vs. I_C
 $T_J = 125^\circ\text{C}$, $L = 500\ \mu\text{H}$, $V_{CC} = 600\ \text{V}$,
 $R_g = 5\ \Omega$, $V_{GE} = 15\ \text{V}$

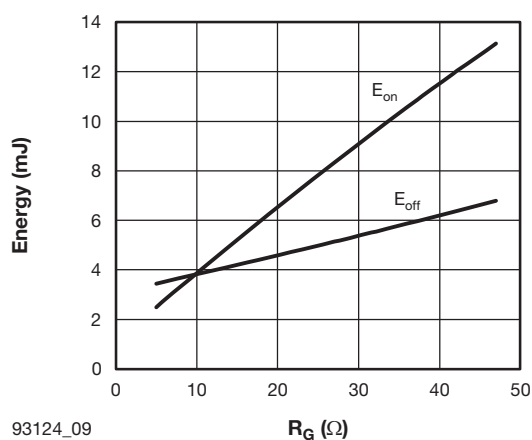


Fig. 9 - Typical IGBT Energy Loss vs. R_g
 $T_J = 125^\circ\text{C}$, $I_C = 75\ \text{A}$, $L = 500\ \mu\text{H}$,
 $V_{CC} = 600\ \text{V}$, $V_{GE} = 15\ \text{V}$

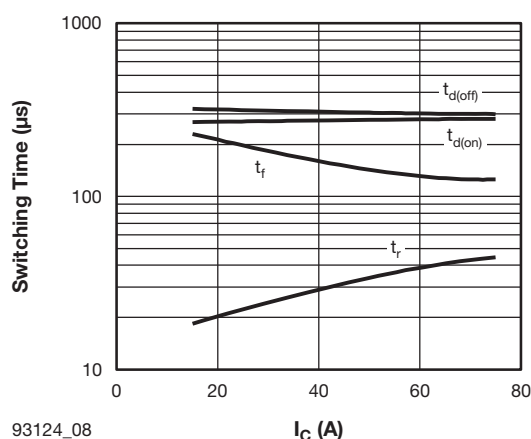


Fig. 8 - Typical IGBT Switching Time vs. I_C
 $T_J = 125^\circ\text{C}$, $L = 500\ \mu\text{H}$, $V_{CC} = 600\ \text{V}$,
 $R_g = 5\ \Omega$, $V_{GE} = 15\ \text{V}$

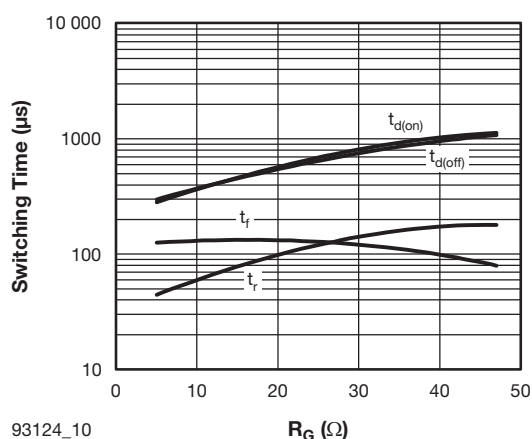


Fig. 10 - Typical IGBT Switching Time vs. R_g
 $T_J = 125^\circ\text{C}$, $L = 500\ \mu\text{H}$, $V_{CC} = 600\ \text{V}$,
 $R_g = 5\ \Omega$, $V_{GE} = 15\ \text{V}$

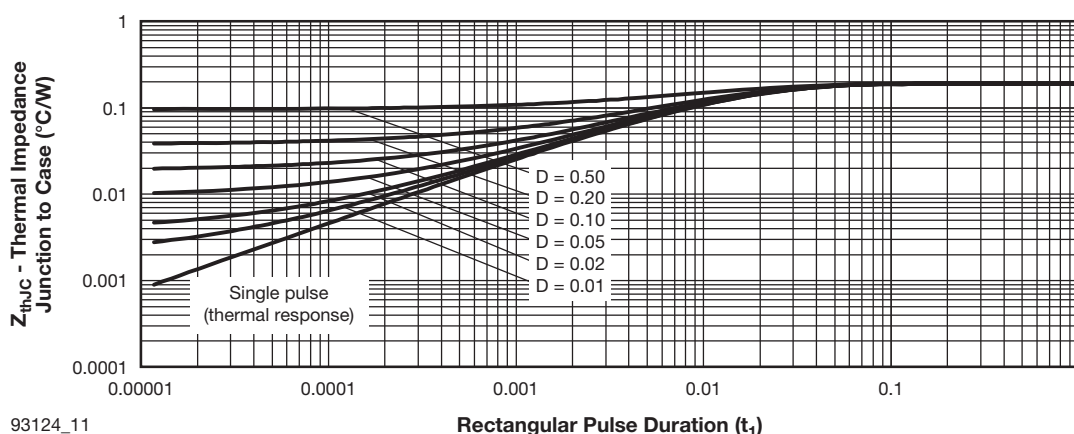


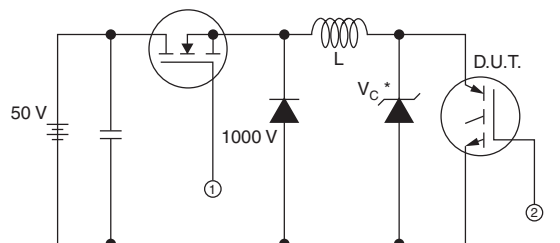
Fig. 11 - Maximum Thermal Impedance Z_{thJC} Characteristics



www.vishay.com

VS-GB75SA120UP

Vishay Semiconductors



* Driver same type as D.U.T.; $V_C = 80\%$ of $V_{ce(max)}$
* Note: Due to the 50 V power supply, pulse width and inductor will increase to obtain I_d

Fig. 12 - Clamped Inductive Load Test Circuit

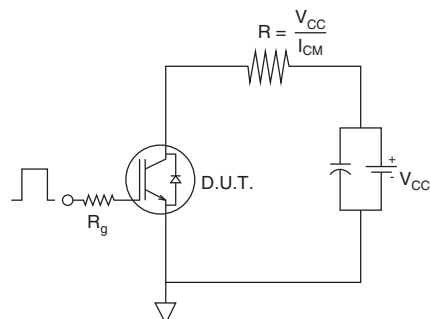


Fig. 13 - Pulsed Collector Current Test Circuit

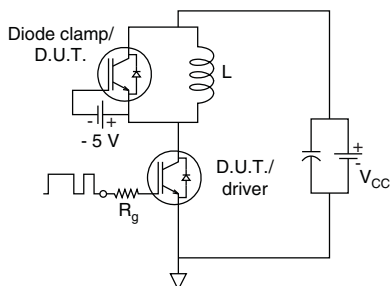


Fig. 14 - Switching Loss Test Circuit

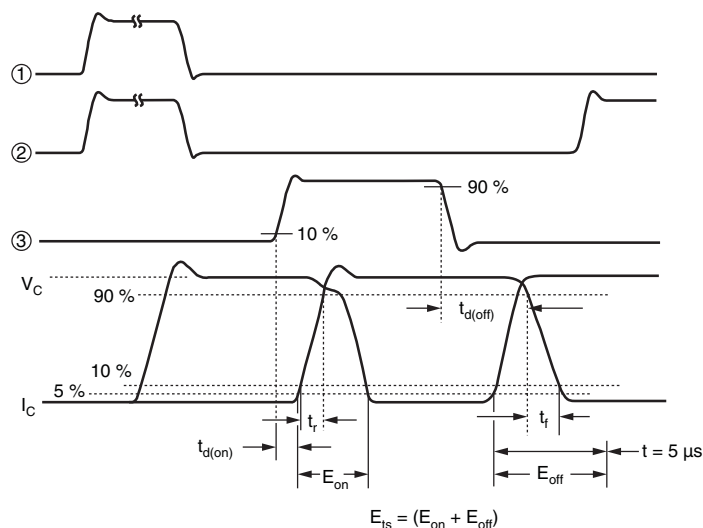


Fig. 15 - Switching Loss Waveforms Test Circuit



www.vishay.com

VS-GB75SA120UP

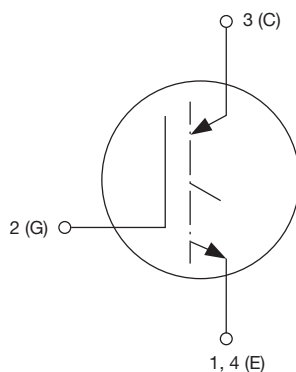
Vishay Semiconductors

ORDERING INFORMATION TABLE

Device code	VS-	G	B	75	S	A	120	U	P
	1	2	3	4	5	6	7	8	9

- 1** - Vishay Semiconductors product
- 2** - Insulated Gate Bipolar Transistor (IGBT)
- 3** - B = IGBT Generation 5
- 4** - Current rating (75 = 75 A)
- 5** - Circuit configuration (S = Single switch without antiparallel diode)
- 6** - Package indicator (A = SOT-227)
- 7** - Voltage rating (120 = 1200 V)
- 8** - Speed/type (U = Ultrafast IGBT)
- 9** - Totally lead (Pb)-free

CIRCUIT CONFIGURATION



LINKS TO RELATED DOCUMENTS	
Dimensions	www.vishay.com/doc?95036
Packaging information	www.vishay.com/doc?95037



Disclaimer

ALL PRODUCT, PRODUCT SPECIFICATIONS AND DATA ARE SUBJECT TO CHANGE WITHOUT NOTICE TO IMPROVE RELIABILITY, FUNCTION OR DESIGN OR OTHERWISE.

Vishay Intertechnology, Inc., its affiliates, agents, and employees, and all persons acting on its or their behalf (collectively, "Vishay"), disclaim any and all liability for any errors, inaccuracies or incompleteness contained in any datasheet or in any other disclosure relating to any product.

Vishay makes no warranty, representation or guarantee regarding the suitability of the products for any particular purpose or the continuing production of any product. To the maximum extent permitted by applicable law, Vishay disclaims (i) any and all liability arising out of the application or use of any product, (ii) any and all liability, including without limitation special, consequential or incidental damages, and (iii) any and all implied warranties, including warranties of fitness for particular purpose, non-infringement and merchantability.

Statements regarding the suitability of products for certain types of applications are based on Vishay's knowledge of typical requirements that are often placed on Vishay products in generic applications. Such statements are not binding statements about the suitability of products for a particular application. It is the customer's responsibility to validate that a particular product with the properties described in the product specification is suitable for use in a particular application. Parameters provided in datasheets and/or specifications may vary in different applications and performance may vary over time. All operating parameters, including typical parameters, must be validated for each customer application by the customer's technical experts. Product specifications do not expand or otherwise modify Vishay's terms and conditions of purchase, including but not limited to the warranty expressed therein.

Except as expressly indicated in writing, Vishay products are not designed for use in medical, life-saving, or life-sustaining applications or for any other application in which the failure of the Vishay product could result in personal injury or death. Customers using or selling Vishay products not expressly indicated for use in such applications do so at their own risk. Please contact authorized Vishay personnel to obtain written terms and conditions regarding products designed for such applications.

No license, express or implied, by estoppel or otherwise, to any intellectual property rights is granted by this document or by any conduct of Vishay. Product names and markings noted herein may be trademarks of their respective owners.

Material Category Policy

Vishay Intertechnology, Inc. hereby certifies that all its products that are identified as RoHS-Compliant fulfill the definitions and restrictions defined under Directive 2011/65/EU of The European Parliament and of the Council of June 8, 2011 on the restriction of the use of certain hazardous substances in electrical and electronic equipment (EEE) - recast, unless otherwise specified as non-compliant.

Please note that some Vishay documentation may still make reference to RoHS Directive 2002/95/EC. We confirm that all the products identified as being compliant to Directive 2002/95/EC conform to Directive 2011/65/EU.

Vishay Intertechnology, Inc. hereby certifies that all its products that are identified as Halogen-Free follow Halogen-Free requirements as per JEDEC JS709A standards. Please note that some Vishay documentation may still make reference to the IEC 61249-2-21 definition. We confirm that all the products identified as being compliant to IEC 61249-2-21 conform to JEDEC JS709A standards.