

Excellent Integrated System Limited

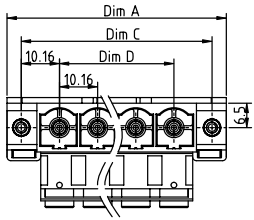
Stocking Distributor

Click to view price, real time Inventory, Delivery & Lifecycle Information:

[FCI](#)
[KK03615200J0G](#)

For any questions, you can email us directly:
sales@integrated-circuit.com

PRODUCT NUMBER	PITCH
KKxx61x200J0G	10.16 mm



N=Number of poles

Dim A	$N \times 10.16 + 17.76$
Dim B	$N \times 10.16 - 0.16$
Dim C	$(N-1) \times 10.16 + 20.32$
Dim D	$(N-1) \times 10.16$

Poles	Tolerance
3P	±0.25
4P	

PART NO.: KK xx 61 x 2 00J0 G

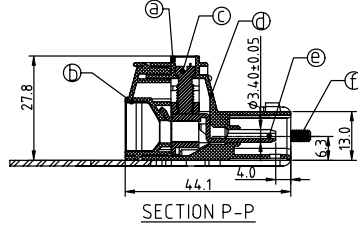
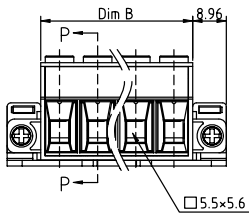
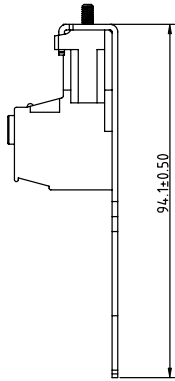
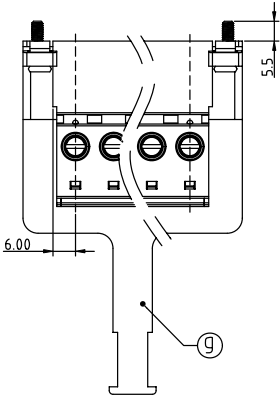
Solid block	0	Color	Black (RAL9005)	RoHS compliant (lead<4%)
No. of poles	2		Red (RAL3001/D)	In copper Alloy
03	3 poles		Orange(RAL2011/P)	
04	4 poles		Yellow(RAL1018/A)	
			5 Green(RAL6018/T)	
			6 Blue (RAL5015/A)	
			8 Grey(RAL7035/D)	
			9 White(RAL1102)	
			C Green(RAL6018/U)	

Material:

- Item① Terminal body:Thermoplastic (UL94 V-0)
- Item② Terminal cover:Thermoplastic (UL94 V-0)
- Item③ Terminal screw:Steel Zinc plating "-" slot type
- Item④ Clamp:Brass, Ni plated
- Item⑤ Pin:Copper Gold plated
- Item⑥ With flange screw:Steel Zinc plating M3*+/-"combination type
- Item⑦ With flange shaft :Steel Zinc plating

Electrical cULus

- Voltage rating: 300VAC
- Current rating: 55A
- Solid wire: 6-20
- Stranded wire: 6-20
- Torque: 18 Lb-In
- Screw: M4.5
- Wire strip length: 13-14mm
- Withstanding Voltage: 16KV
- Operating temperature: -40°C to +115°C
- Safety Approval:



mat'l. code	surface ASME Y14.5	tolerance ASME Y14.5	projection	product family TERMINAL BLOCK
ltr ecn no dr date	tolerances unless otherwise specified		MM	title TERMINAL BLOCK
	angles	X.±0.5		PLUGGABLE PLUG,WITH HANDLE,FLANGE WITH SCREW
	X'±1'	X.X±0.3	scale	sheet 1 of 1 size A4
	dr	EVIN ZHONG 050614	FCI	dwg no KKxx61x200J0G
	enr	EVIN ZHONG 050614		type CUSTOMER Drawing
	chr	HANKE FENG 050614		
	appd	SHI JUN 050614		
sheet index	revision sheet	A 1		