

Excellent Integrated System Limited

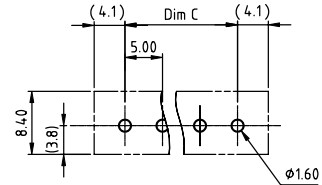
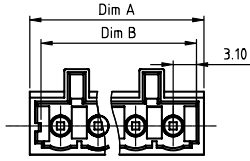
Stocking Distributor

Click to view price, real time Inventory, Delivery & Lifecycle Information:

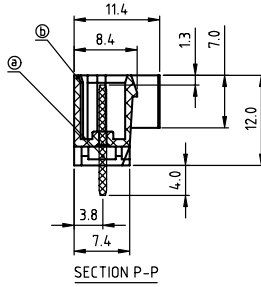
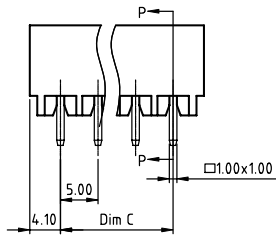
[FCI](#)
[NC02728000J0G](#)

For any questions, you can email us directly:
sales@integrated-circuit.com

PRODUCT NUMBER	PITCH
NCxx72x000J0G	5.00 mm



RECOMMENDED P.C.B. LAYOUT
TOP VIEW



- Material:
- Item①Male contact pin: Copper Tin plated
 - Item②Terminal(housing): Thermoplastic (UL94V-0)
- Electrical:
- Voltage rating: 300V
 - Current rating: 8A
 - Withstanding Voltage: 1.6 KV
 - Operating temperature: -40°C to +115°C
 - Soldering temperature: 260°C±5°C/5 Sec
 - Safety Approval:

N = Number of poles
Dim A=Nx5.0+3.2
Dim B=Nx5.0+0.7
Dim C=(N-1)x5.0

PART NO.: NC xx 7 2 x 0 00J0 G

- | | | |
|--------------|---------------------|-----------------|
| Solid block | Color | RoHS compliant |
| No. of poles | 0 Black (RAL9005) | (lead<4%) |
| 02 2 poles | 2 Red (RAL3001/D) | In copper Alloy |
| 03 3 poles | 3 Orange(RAL2011/P) | |
| ... | 4 Yellow(RAL1018/A) | |
| ... | 5 Green(RAL6018/T) | |
| 24 24 poles | 6 Blue (RAL5015/A) | |
| | 8 Grey(RAL7035/D) | |
| | 9 White(RAL1102) | |
| | C Green(RAL6018/U) | |

poles	Dim A	Dim B	Dim C
2-6p	±0.20	+0.15 -0	±0.20
6-12p	±0.30	+0.3 -0	±0.30
12-24p	±0.40	+0.4 -0	±0.40

mat'l. code	surface ASME Y14.5	tolerance ASME Y14.5	projection 	product family TERMINAL BLOCK
ltr	ecn	no	dr	date
tolerances unless otherwise specified				title TERMINAL BLOCK
angles	X.±0.5		MM	PLUGGABLE SOCKET,VERTICAL,W/HOOK HOLDER
X'±1'	X.X±0.3		scale	dwg no NCxx72x000J0G
dr	EVIN ZHONG	042314		sheet 1 of 1
enrg	EVIN ZHONG	042314		size A4
chr	HANKE FENG	042314		type CUSTOMER Drawing
appd	SHI JUN	042314		
sheet index	revision sheet	A 1		