

Excellent Integrated System Limited

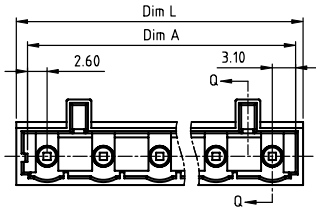
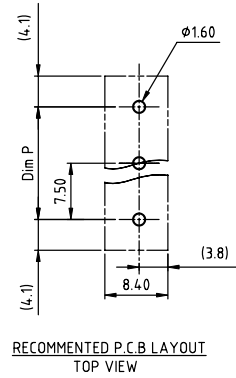
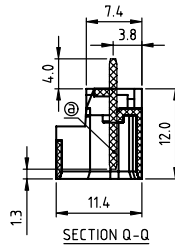
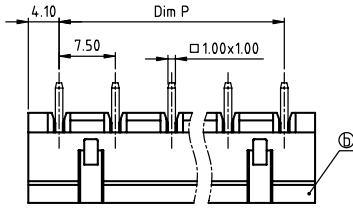
Stocking Distributor

Click to view price, real time Inventory, Delivery & Lifecycle Information:

[FCI](#)
[NC02A28000J0G](#)

For any questions, you can email us directly:
sales@integrated-circuit.com

PRODUCT NUMBER	PITCH
NCxxA2x000J0G	7.50 mm



- Material:
- Item①Male contact pin: Copper Tin plated
 - Item②Terminal(housing): Thermoplastic (UL94V-0)
- Electrical:
- Voltage rating: cULus 300V
 - Current rating: 8A
 - Withstanding Voltage: 1.6 KV
 - Operating temperature: -40°C to +115°C
 - Soldering temperature: 260°C±5°C/5 Sec
 - Safety Approval: cULus

N=Number of poles
Dim L=Nx7.5+0.7
Dim P=(N-1)x7.5
Dim A=(N-1)x7.5+5.7

PART NO.: NC xx A 2 x 0 00J0 G

- | | | |
|--------------|---------------------|-----------------|
| Solid block | Color | RoHS compliant |
| No. of poles | 0 Black (RAL9005) | (lead<4%) |
| 02 2 poles | 2 Red (RAL3001/D) | In copper Alloy |
| 03 3 poles | 3 Orange(RAL2011/P) | |
| ... | 4 Yellow(RAL1018/A) | |
| ... | 5 Green(RAL6018/T) | |
| 16 16 poles | 6 Blue (RAL5015/A) | |
| | 8 Grey(RAL7035/D) | |
| | 9 White(RAL1102) | |
| | C Green(RAL6018/U) | |

poles	Dim L	Dim P	Dim A
2-6p	±0.20	±0.20	±0.20
7-12p	±0.25	±0.25	±0.25
13-16p	±0.40	±0.30	±0.30

mat'l. code	surface ASME Y14.5	tolerance ASME Y14.5	projection	product family TERMINAL BLOCK
ltr	ecn	no	dr	date
tolerances unless otherwise specified				title TERMINAL BLOCK
angles	X.±0.5			PLUGGABLE SOCKET,RIGHT ANGLE,W/HOOK HOLDER
X'±1'	X.X±0.3			sheet 1 of 1
	X.XX±0.1			size A4
dr	EVIN ZHONG	042314	scale	sheet 1 of 1
enrg	EVIN ZHONG	042314		size A4
chr	HANKE FENG	042314		type CUSTOMER Drawing
appd	SHI JUN	042314		
sheet index	revision sheet	A 1		