

Excellent Integrated System Limited

Stocking Distributor

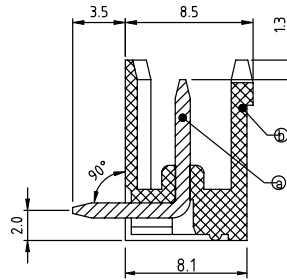
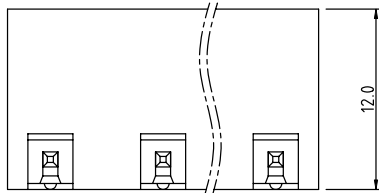
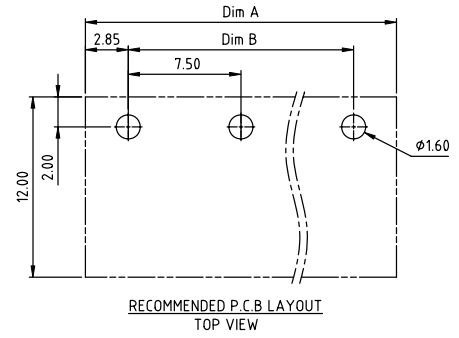
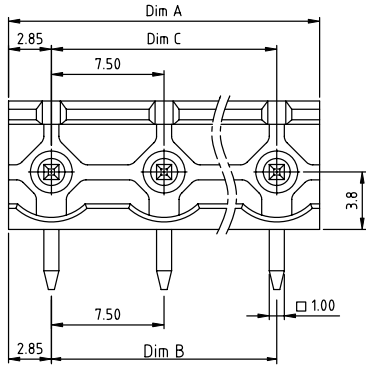
Click to view price, real time Inventory, Delivery & Lifecycle Information:

[FCI](#)
[OQ02A05100J0G](#)

For any questions, you can email us directly:

sales@integrated-circuit.com

PRODUCT NUMBER	PITCH
OQxxA0x100J0G	7.50 mm



Material:

- Item ① Male contact pin: Copper Tin plated
- Item ② Terminal housing: Thermoplastic (UL94V-0)

Electrical:

- | | | | |
|--------------------------|-----------------|-----|------|
| ● Voltage rating: | 300V | TUV | 750V |
| ● Current rating: | 20A | | 15A |
| ● Withstanding Voltage: | 1.6 KV | | 6KV |
| ● Operating temperature: | -40°C to +115°C | | |
| ● Soldering temperature: | 260°C±5°C/5 Sec | | |
| ● Safety Approval: | | | |

DIMENSION

Dim A	(N-1)X7.5+5.7
Dim B&C	(N-1)X7.5
N= NUMBER OF POLES	
Poles	Tolerance
2P-6P	±0.20
7P-12P	±0.30
13P-16P	±0.40

PART NO.: OQ xx A 0 x 1 00J0 G

No. of poles	0 Black (RAL9005)	RoHS compliant
02 2 poles	2 Red (RAL3001/D)	(lead<4%)
03 3 poles	3 Orange(RAL2011/P)	In copper Alloy
...	4 Yellow(RAL1018/A)	
16 16 poles	5 Green(RAL6018/T)	
	6 Blue (RAL5015/A)	
	8 Grey(RAL7035/D)	
	9 White(RAL1102)	
	C Green(RAL6018/U)	

mat'l. code	surface ASME Y14.5	tolerance ASME Y14.5	projection	product family
ltr	ecn no	dr	date	TERMINAL BLOCK
tolerances unless otherwise specified				title
angles	X.±0.5			TERMINAL BLOCK
	X.X±0.3			PLUGGABLE SOCKET_OPEN_RIGHT ANGLE
	X.XX±0.1			dwg no
dr	HANKE FENG	040414		sheet 1 of 1
enqr	HANKE FENG	040414		size
chr	SHI JUN	040414		A4
appd	SHI JUN	040414		OQxxA0x100J0G
sheet index	revision sheet	A	1	type
				CUSTOMER Drawing

form: A4mmXlc

PDS: Rev :A 3

STATUS:Released

Printed: Jun 12,2014