

Excellent Integrated System Limited

Stocking Distributor

Click to view price, real time Inventory, Delivery & Lifecycle Information:

[FCI](#)
[SFW30R-4STE1HLF](#)

For any questions, you can email us directly:
sales@integrated-circuit.com



List of "SFW__R-3/4STE1HLF" customer document

DOCUMENT NO.	LIST
GS-12-0986	SPEC.
10118875	CAT.NO.TABLE FOR 1mm SPACING SMT CONNECTOR (SFW__R-3/4ST__HLF)
10118875	1mm SPACING SMT CONNECTOR (SFW__R-3ST__HLF)
10118875	1mm SPACING SMT CONNECTOR (SFW__R-4ST__HLF)
10118875	CAT.NO.TABLE FOR PLASTIC TAPE PACKAGED 1mm SPACING SMT CONNECTOR (SFW__R-3/4STE1HLF)
10118875	PLASTIC TAPE PACKAGED 1mm SPACING SMT CONNECTOR (SFW__R-3STE1HLF)
10118875	PLASTIC TAPE PACKAGED 1mm SPACING SMT CONNECTOR (SFW__R-4STE1HLF)
10118875	RECOMMENDED CABLE (FPC) (SFW__R-3/4ST__)
10118875	RECOMMENDED CABLE (FFC) (SFW__R-3/4ST__)
GS-20-130	HANDLING PROCEDURES



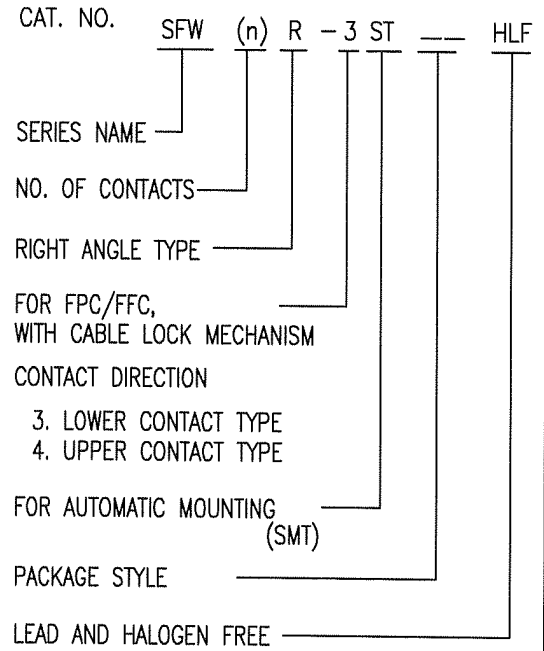
FCIconnect.com

Copyright FCI.

mat'l. code		-		surface 58 / tolerance ISO 1302 / ISO 406 / ISO 1101		projection		product family 58RF		CODE JP	
ltr	ecn no	dr	date	tolerances unless otherwise specified		mm		title			
A	J11-0174	S.W	2011-08-10	angles	linear	scale X		1mm SPACING FPC CONNECTOR DOCUMENT LIST (Cat. No. : SFW__R-3/4STE1HLF)			
		dr	<i>S.W. Thir</i>	2011-8-10	FCI		dwg no		sheet 1 of 9	size	
		enr	<i>S.W. Thir</i>	2011-8-10			10118875		A4		
		chr	<i>Adasone</i>	2011-8-10			type Product Customer Drawing				
		appd	<i>M. L...</i>	Aug 11/11							
sheet index	revision sheet	A	A	A	A	A	A	A	A	A	Rev. A
		1	2	3	4	5	6	7	8	9	

CAT. NO. & DIMENSIONS

NO. OF CONTACTS (n)	CAT. NO.	DIMENSIONS (NOTE2)			
		A ± 0.2	B ± 0.2	C ± 0.2	D ± 0.1
4	SFW4R-3/4ST__HLF	9.8	8.6	3.0	3.92
5	SFW5R-3/4ST__HLF	10.8	9.6	4.0	4.92
6	SFW6R-3/4ST__HLF	11.8	10.6	5.0	5.92
7	SFW7R-3/4ST__HLF	12.8	11.6	6.0	6.92
8	SFW8R-3/4ST__HLF	13.8	12.6	7.0	7.92
9	SFW9R-3/4ST__HLF	14.8	13.6	8.0	8.92
10	SFW10R-3/4ST__HLF	15.8	14.6	9.0	9.92
11	SFW11R-3/4ST__HLF	16.8	15.6	10.0	10.92
12	SFW12R-3/4ST__HLF	17.8	16.6	11.0	11.92
13	SFW13R-3/4ST__HLF	18.8	17.6	12.0	12.92
14	SFW14R-3/4ST__HLF	19.8	18.6	13.0	13.92
15	SFW15R-3/4ST__HLF	20.8	19.6	14.0	14.92
16	SFW16R-3/4ST__HLF	21.8	20.6	15.0	15.92
17	SFW17R-3/4ST__HLF	22.8	21.6	16.0	16.92
18	SFW18R-3/4ST__HLF	23.8	22.6	17.0	17.92
19	SFW19R-3/4ST__HLF	24.8	23.6	18.0	18.92
20	SFW20R-3/4ST__HLF	25.8	24.6	19.0	19.92
21	SFW21R-3/4ST__HLF	26.8	25.6	20.0	20.92
22	SFW22R-3/4ST__HLF	27.8	26.6	21.0	21.92
23	SFW23R-3/4ST__HLF	28.8	27.6	22.0	22.92
24	SFW24R-3/4ST__HLF	29.8	28.6	23.0	23.92
25	SFW25R-3/4ST__HLF	30.8	29.6	24.0	24.92
26	SFW26R-3/4ST__HLF	31.8	30.6	25.0	25.92
27	SFW27R-3/4ST__HLF	32.8	31.6	26.0	26.92
28	SFW28R-3/4ST__HLF	33.8	32.6	27.0	27.92
29	SFW29R-3/4ST__HLF	34.8	33.6	28.0	28.92
30	SFW30R-3/4ST__HLF	35.8	34.6	29.0	29.92



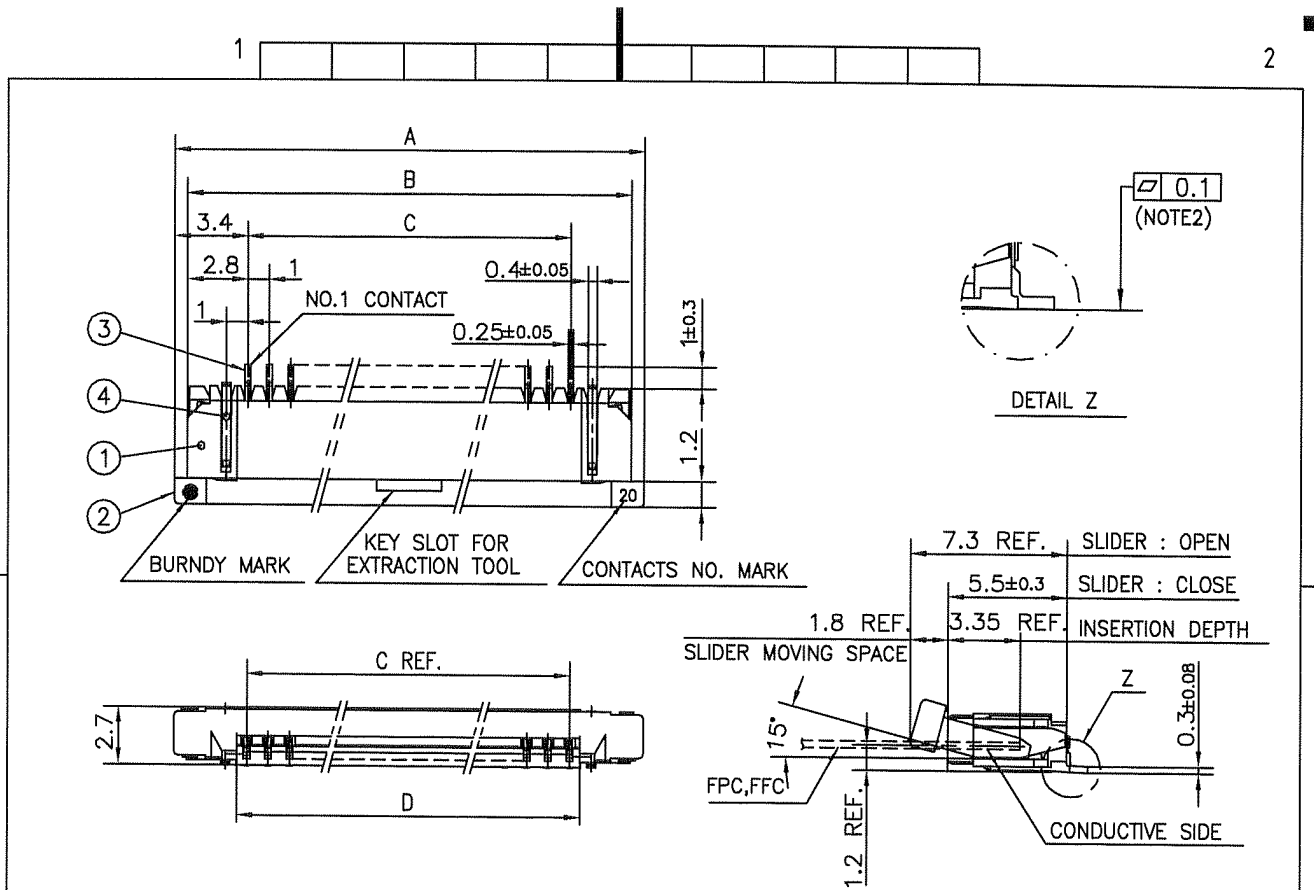
NOTES

1. THIS PRODUCT IS THE CONNECTOR USED FOR FPC/FFC AND COPE WITH AUTOMATIC MOUNTING (SMT).
2. SEE PART DRAWINGS FOR DIMENSIONS A~D.
3. THIS PRODUCT IS THE CONNECTOR WITH CABLE LOCK MECHANISM.

mat'l. code				surface 58 / ISO 1302 ✓		tolerance ISO 406 / ISO 1101		projection		product family 58RF		CODE JP	
ltr ecn no dr date				tolerances unless otherwise specified		mm		title		CAT NO. TABLE FOR 1mm SPACING SMT CONNECTOR (Cat. No. SFW__R-3/4ST__HLF)			
A				angles linear		scale X		dwg no		sheet 2 of 9		size	
				dr		2011-8-10		FCI		10118875		A4	
				enrg		2011-8-10		type		Product Customer Drawing		Rev. A	
				chr		2011-8-10							
				appd		Aug 11							
sheet index		revision sheet											



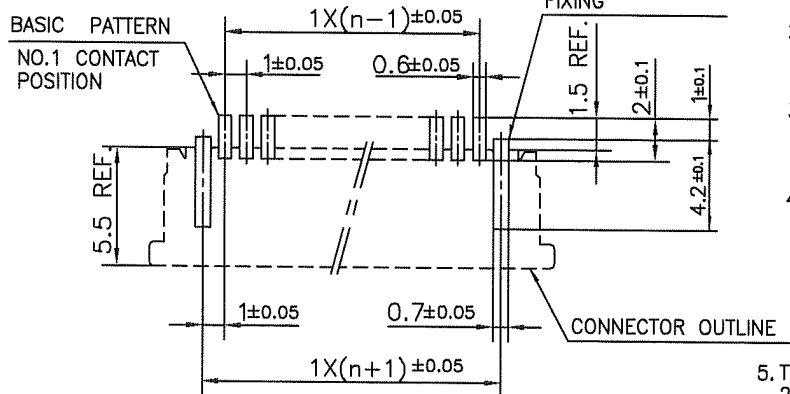
Copyright FCI.



PT. NO.	PARTS NAME	MATERIAL	Q'TY	NOTE
1	HOUSING	PPS RESIN GLASS REINFORCED (UL94V-0)	1	COLOR : GRAY
2	SLIDER	PPS RESIN GLASS REINFORCED (UL94V-0)	1	COLOR : GRAY
3	CONTACT	PHOSPHOR BRONZE	n	PLATING : TIN
4	MOUNTING PLATE	PHOSPHOR BRONZE	2	PLATING : TIN

n : NO. OF CONTACTS

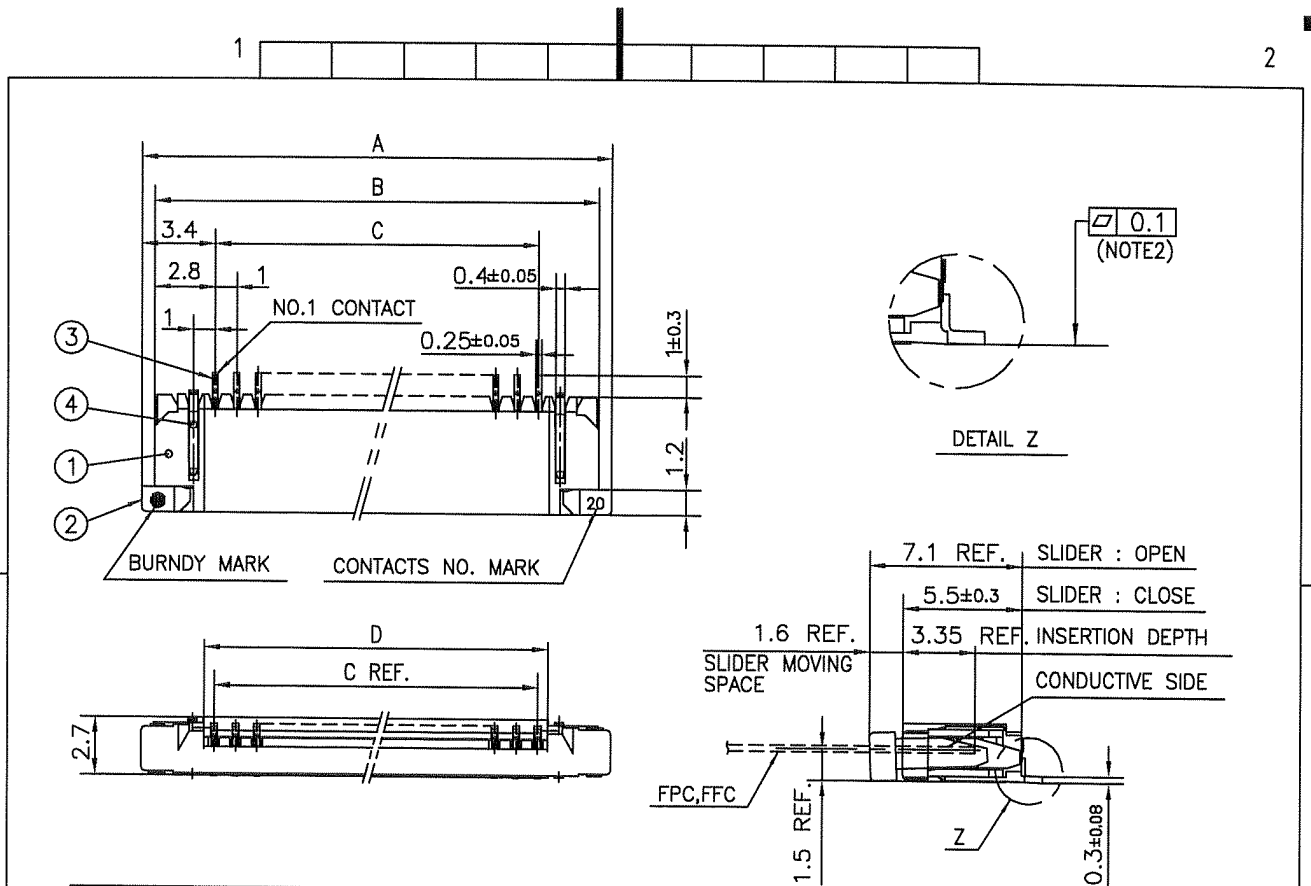
RECOMMENDED PC BOARD LAYOUT
(COMPONENT SIDE)



NOTES

1. THIS PRODUCT IS THE CONNECTOR USED FOR FPC/FFC AND COPES WITH AUTOMATIC MOUNTING (SMT).
2. FLATNESS FOR CONTACT TERMINAL HOUSING MUST BE WITHIN TOLERANCE IN Z PORTION DETAILED DRAWING.
3. THIS PRODUCT IS LOWER CONTACT TYPE CONNECTOR WITH CABLE LOCK MECHANISM.
4. THIS PRODUCT MEETS EUROPEAN UNION DIRECTIVES AND OTHER COUNTRY REGULATIONS AS DESCRIBED IN GS-22-008
5. THE HOUSING WILL WITHSTAND EXPOSURE TO 260°C PEAK TEMPERATURE FOR 10 SECONDS IN A REFLOW SOLDERING OVEN.

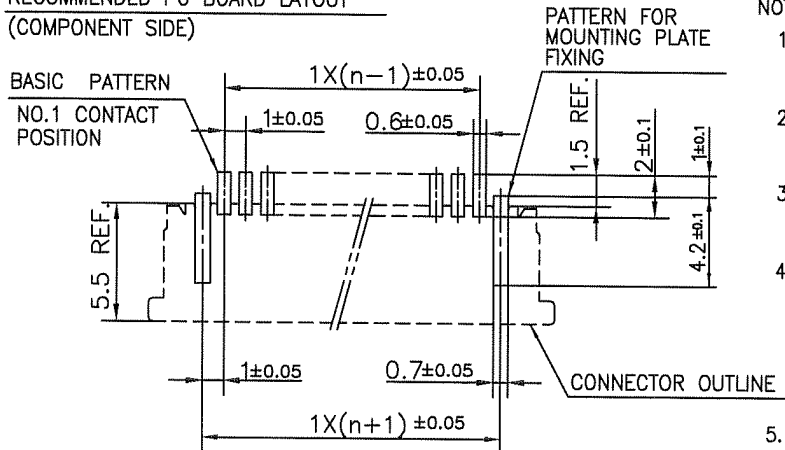
mat'l. code				surface 58 / ISO 1302	tolerance ISO 406 / ISO 1101	projection	product family 58RF	CODE JP
ltr	ecn no	dr	date	tolerances unless otherwise specified		mm	title	
A				angles	linear ±0.2		1mm SPACING SMT CONNECTOR (Cat. No. SFW__R-3ST__HLF)	
				dr	<i>S. Watabe</i> 2011-8-10		dwg no	
				enr	<i>S. Watabe</i> 2011-8-10		sheet 3 of 9	
				chr	<i>Asano</i> 2011-8-10		10118875	
				appd	<i>M. Watabe</i> Aug 11		size A4	
sheet index		revision sheet		type Product Customer Drawing				Rev. A



PT. NO.	PARTS NAME	MATERIAL	Q'TY	NOTE
1	HOUSING	PPS RESIN GLASS REINFORCED (UL94V-0)	1	COLOR : GRAY
2	SLIDER	PPS RESIN GLASS REINFORCED (UL94V-0)	1	COLOR : GRAY
3	CONTACT	PHOSPHOR BRONZE	n	PLATING : TIN
4	MOUNTING PLATE	PHOSPHOR BRONZE	2	PLATING : TIN

n : NO. OF CONTACTS

RECOMMENDED PC BOARD LAYOUT
 (COMPONENT SIDE)



NOTES

- THIS PRODUCT IS THE CONNECTOR USED FOR FPC/FFC AND COPES WITH AUTOMATIC MOUNTING (SMT).
- FLATNESS FOR CONTACT TERMINAL HOUSING MUST BE WITHIN TOLERANCE IN Z PORTION DETAILED DRAWING.
- THIS PRODUCT IS UPPER CONTACT TYPE CONNECTOR WITH CABLE LOCK MECHANISM.
- THIS PRODUCT MEETS EUROPEAN UNION DIRECTIVES AND OTHER COUNTRY REGULATIONS AS DESCRIBED IN GS-22-008
- THE HOUSING WILL WITHSTAND EXPOSURE TO 260°C PEAK TEMPERATURE FOR 10 SECONDS IN A REFLOW SOLDERING OVEN.

mat'l. code				surface 58 / ISO 1302	tolerance ISO 406 / ISO 1101	projection	product family 58RF	CODE JP
ltr	ecn no	dr	date	tolerances unless otherwise specified		mm	title	
A				angles linear	±0.2		1mm SPACING SMT CONNECTOR (Cat. No. SFW__R-4ST__HLF)	
				dr	S. Nithin	2011-8-10	dwg no	sheet 4 of 9
				enr	S. Nithin	2011-8-10	10118875	size A4
				chr	R. S. S. S.	2011-8-10	type Product Customer Drawing	
				appd	M. S. S.	Aug 11/11	Rev. A	
sheet index	revision sheet							



FCIconnect.com

Copyright FCI.



CAT. NO. & DIMENSIONS

NO. OF CONTACTS (n)	CAT. NO. (NOTE2)	DIMENSIONS (NOTE3)		
		E ± 5	F ± 0.3	G ± 0.1
4	SFW4R-3/4STE1HLF	20.4	16	—
5	SFW5R-3/4STE1HLF	28.4	24	—
6	SFW6R-3/4STE1HLF	28.4	24	—
7	SFW7R-3/4STE1HLF	28.4	24	—
8	SFW8R-3/4STE1HLF	28.4	24	—
9	SFW9R-3/4STE1HLF	28.4	24	—
10	SFW10R-3/4STE1HLF	28.4	24	—
11	SFW11R-3/4STE1HLF	28.4	24	—
12	SFW12R-3/4STE1HLF	28.4	24	—
13	SFW13R-3/4STE1HLF	36.4	32	28.4
14	SFW14R-3/4STE1HLF	36.4	32	28.4
15	SFW15R-3/4STE1HLF	36.4	32	28.4
16	SFW16R-3/4STE1HLF	36.4	32	28.4
17	SFW17R-3/4STE1HLF	48.4	44	40.4
18	SFW18R-3/4STE1HLF	48.4	44	40.4
19	SFW19R-3/4STE1HLF	48.4	44	40.4
20	SFW20R-3/4STE1HLF	48.4	44	40.4
21	SFW21R-3/4STE1HLF	48.4	44	40.4
22	SFW22R-3/4STE1HLF	48.4	44	40.4
23	SFW23R-3/4STE1HLF	48.4	44	40.4
24	SFW24R-3/4STE1HLF	48.4	44	40.4
25	SFW25R-3/4STE1HLF	48.4	44	40.4
26	SFW26R-3/4STE1HLF	48.4	44	40.4
27	SFW27R-3/4STE1HLF	48.4	44	40.4
28	SFW28R-3/4STE1HLF	60.4	56	52.4
29	SFW29R-3/4STE1HLF	60.4	56	52.4
30	SFW30R-3/4STE1HLF	60.4	56	52.4

CAT. NO. SFW (n) R - 3 ST E1 HLF

SERIES NAME

NO. OF CONTACTS

RIGHT ANGLE TYPE

FOR FPC/FFC, WITH CABLE LOCK MECHANISM

CONTACT DIRECTION
 3. LOWER CONTACT TYPE
 4. UPPER CONTACT TYPE

FOR AUTOMATIC MOUNTING (SMT)

TAPE PACKAGING

LEAD AND HALOGEN FREE

NOTES

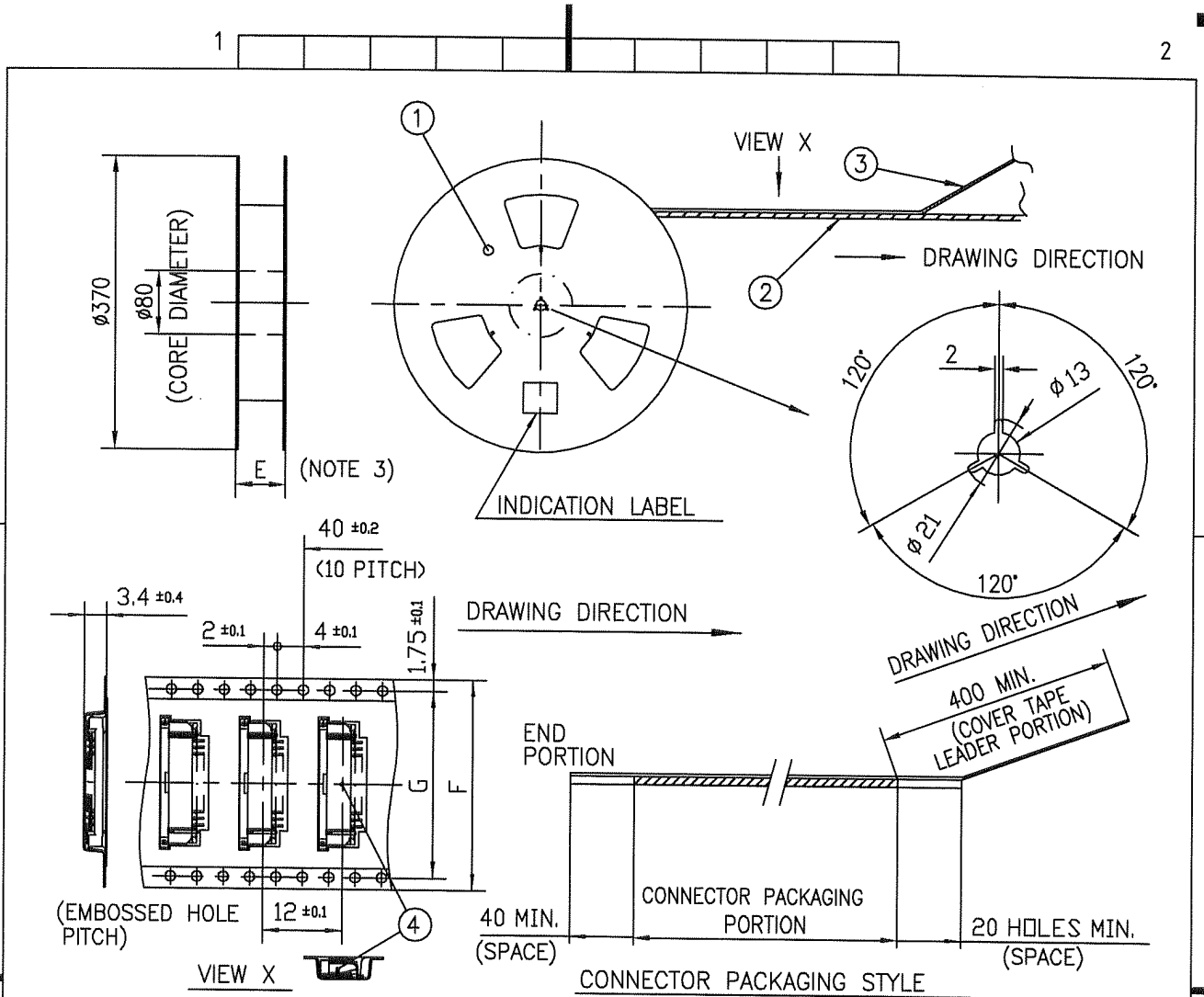
1. THIS PRODUCT IS THE CONNECTOR USED FOR FPC/FFC AND COPEs WITH AUTOMATIC MOUNTING (SMT).
2. THIS CATALOG NO. INDICATES PLASTIC TAPE PACKAGED CONNECTOR.
3. SEE PART DRAWINGS FOR DIMENSIONS E~G.
4. THIS PRODUCT IS THE CONNECTOR WITH CABLE LOCK MECHANISM.

mat'l. code				surface 58 / tolerance ISO 1302 ✓ / ISO 406 / ISO 1101		projection		product family 58RF		CODE JP			
ltr		ecn no		dr		date		tolerances unless otherwise specified		title			
A								angles linear		CAT NO. TABLE FOR PLASTIC TAPE PACKAGED 1mm SPACING SMT CONNECTOR (Cat. No. SFW__R-3/4STE1HLF)			
								mm		dwg no			
								scale X		sheet 5 of 9			
				dr		2011-8-10				size			
				enrg		2011-8-10				10118875		A4	
				chr		2011-8-10				type		Product Customer Drawing	
				appd		August 11							
sheet index		revision sheet								Rev. A			



FCIconnect.com

Copyright FCI.



PT. NO.	PARTS NAME	CAT. NO.	MATERIAL	Q'TY	NOTE
1	REEL	—	CARDBOARD	1	COLOR:WHITE
2	PLASTIC (EMBOSS) TAPE	—	PET	—	COLOR:TRANSPARENCY
3	COVER	—	POLYESTER	—	COLOR:TRANSPARENCY
4	CONNECTOR	SFW__R-3ST_HLF	SEE ATTACHED DWG.	2000	LOWER CONTACT TYPE

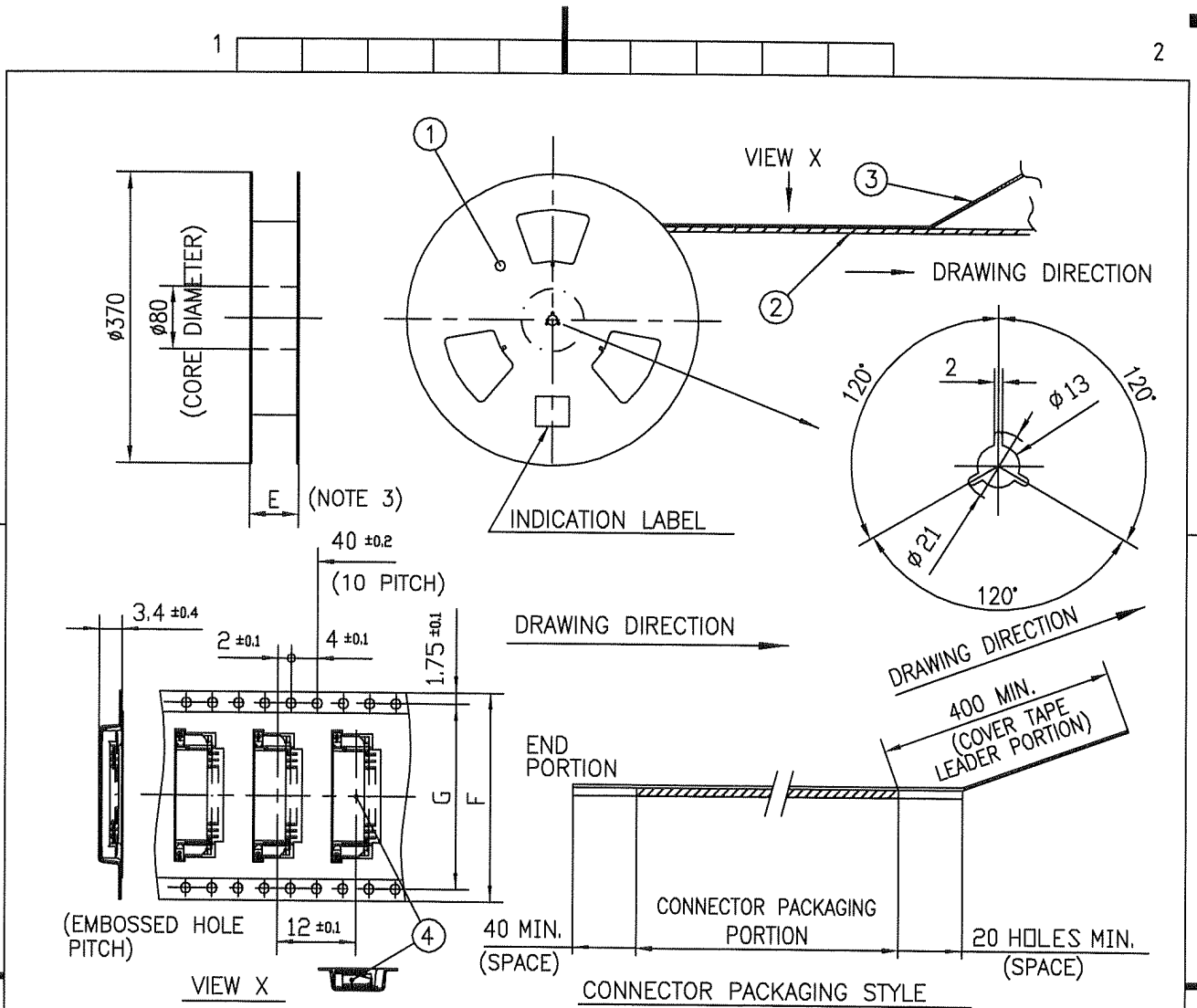
NOTES

- THIS IS PLASTIC TAPE PACKAGED CONNECTOR WITH CABLE LOCK MECHANISM USED FOR FPC/FFC AND COPEs WITH AUTOMATIC MOUNTING (SMT).
- SEE JIS C 0806 (PACKING OF ELECTRONIC COMPONENTS ON CONTINUOUS TAPES (SURFACE MOUNTING DEVICES)) FOR SHAPE AND DIMENSIONS OF PLASTIC (EMBOSS) TAPE AND REEL.
- E DIMENSION IS PORTION OF THE CORE.

mat'l. code		surface 58 / tolerance ISO 1302 / ISO 406 / ISO 1101		projection		product family 58RF		CODE JP	
ltr ecn no dr date		tolerances unless otherwise specified		mm		title			
A		angles linear ±5		mm		PLASTIC TAPE PACKAGED 1mm SPACING SMT CONNECTOR (Cat. No. SFW__R-3STE1HLF)			
		±5'		scale X		dwg no		sheet 6 of 9 size	
		dr <i>S. Muthu</i> 2011-8-10				10118875		A4	
		enr <i>S. Muthu</i> 2011-8-10				type Product Customer Drawing		Rev. A	
		chr <i>R. Soman</i> 2011-8-10							
		appd <i>M. Muthu</i> Aug 11/11							
sheet index		revision sheet							

FCI
FCIconnect.com

Copyright FCI.



PT. NO.	PARTS NAME	CAT. NO.	MATERIAL	Q'TY	NOTE
1	REEL	—	CARDBOARD	1	COLOR:WHITE
2	PLASTIC (EMBOSS) TAPE	—	PET	—	COLOR:TRANSPARENCY
3	COVER	—	POLYESTER	—	COLOR:TRANSPARENCY
4	CONNECTOR	SFW__R-4ST__HLF	SEE ATTACHED DWG.	2000	UPPER CONTACT TYPE

NOTES

- THIS IS PLASTIC TAPE PACKAGED CONNECTOR WITH CABLE LOCK MECHANISM USED FOR FPC/FFC AND COPES WITH AUTOMATIC MOUNTING (SMT).
- SEE JIS C 0806 (PACKING OF ELECTRONIC COMPONENTS ON CONTINUOUS TAPES (SURFACE MOUNTING DEVICES)) FOR SHAPE AND DIMENSIONS OF PLASTIC (EMBOSS) TAPE AND REEL.
- E DIMENSION IS PORTION OF THE CORE.

mat'l. code				surface 58 / ISO 1302	tolerance ISO 406 / ISO 1101	projection	product family 58RF	CODE JP
ltr	ecn no	dr	date	tolerances unless otherwise specified		mm	title PLASTIC TAPE PACKAGED 1mm SPACING SMT CONNECTOR (Cat. No. SFW__R-4STE1HLF)	
A				angles linear	±5			
				±5'		scale X	dwg no sheet 7 of 9 size	
				dr S. H. T. 2011-8-10			10118875 A4	
				enr S. H. T. 2011-8-10			type Product Customer Drawing	
				chr Z. L. S. 2011-8-10				
				appd M. W. 2011-8-10				
sheet index	revision sheet							Rev. A

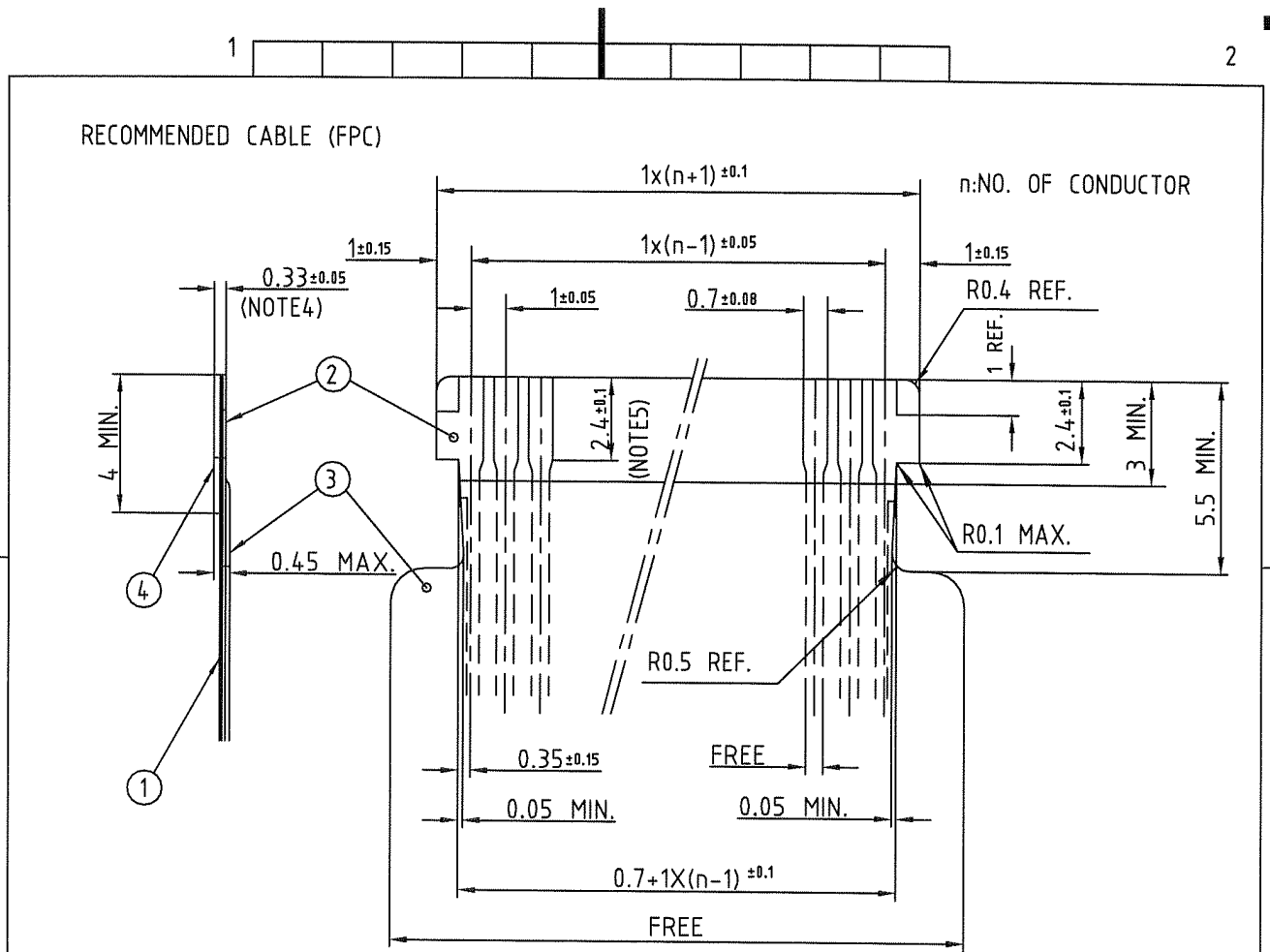


FCIconnect.com

Copyright FCI.

D

D



PT. NO.	PARTS NAME	MATERIAL	THICKNESS (um)
1	BASE FILM	POLYIMIDE OR POLYESTER OR EQUAL	25
2	CONDUCTOR	COPPER FOIL(PLATING : SOLDER 1um MIN.)	35
3	OVERLAY	POLYIMIDE OR POLYESTER OR EQUAL	—
4	SUPPORTING TAPE	POLYESTER OR POLYIMIDE OR EQUAL	188

- NOTES
- THIS DRAWING INDICATES THE FPC USED THE CONNECTOR WITH CABLE LOCK MECHANISM.
 - NO BURR AT EACH PORTION.
 - NO PEELING IN COMMON USE.
 - TOTAL THICKNESS LIMIT OF EACH MATERIAL (INCLUDING ADHESIVE AGENT) IS SPECIFIED.
 - THIS DIMENSION INDICATES THE RANGE FOR 0.7 ± 0.08 CONDUCTOR WIDTH.

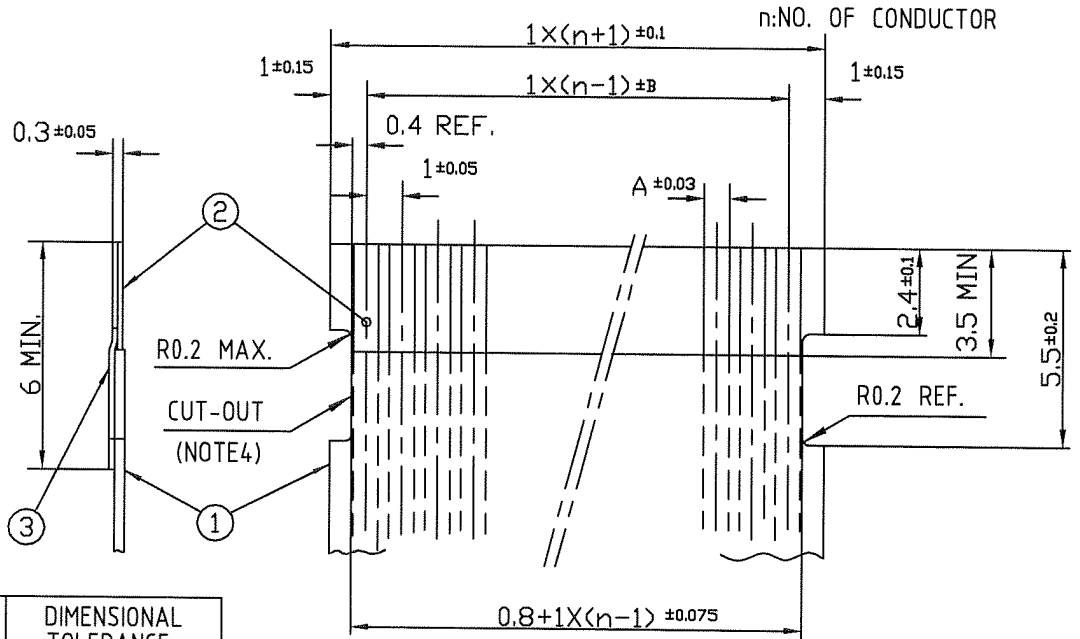
mat'l. code				surface 58 / tolerance ISO 1302 ✓ / ISO 406 / ISO 1101		projection		product family 58RF		CODE JP	
ltr ecn no dr date				tolerances unless otherwise specified				title			
A				angles linear		mm		RECOMMENDED CABLE (Cat. No. SFW_R-3/4_)			
				dr <i>S. M. ...</i> 2011-8-10		scale \times		dwg no		sheet 8 of 9	
				enr <i>S. M. ...</i> 2011-8-10				10118875		size A4	
				chr <i>P. ...</i> 2011-8-10				type Product Customer Drawing			
sheet index		revision sheet		appd <i>M. ...</i> AUG 11/11						Rev. A	



Copyright FCI.

FCIconnect.com

RECOMMENDED CABLE (FFC)



KIND OF FFC (NOTE5)	DIMENSIONAL TOLERANCE	
	A	B
1	0.7	0.1
2	0.6	0.07

PT. NO.	PARTS NAME	MATERIAL	NOTE
1	INSULATOR	FLAME RESISTING POLYESTER OR EQUAL	_____
2	CONDUCTOR	COPPER FOIL	PLATING:TIN OR SOLDER 1um MIN.
3	SUPPORTING TAPE	FLAME RESISTING POLYESTER OR EQUAL	_____

- NOTES
- THIS DRAWING INDICATES THE FFC USED THE CONNECTOR WITH CABLE LOCK MECHANISM.
 - NO BURR AT EACH PORTION.
 - NO PEELING IN COMMON USE.
 - THERE IS A POSSIBILITY THAT THE CAT-OUT CROSSES THE CONDUCTOR BECAUSE OF DIMENSIONAL TOLERANCE.
 - EITHER KIND1 OR KIND2 OF FFC CAN ACCEPT DIMENSIONAL TOLERANCE a AND b.

mat'l. code				surface 58 / tolerance ISO 1302 ✓ / ISO 406 / ISO 1101		projection		product family 58RF		CODE JP	
ltr ecn no dr date				tolerances unless otherwise specified				title RECOMMENDED CABLE (Cat. No. SFW_R-3/4_)			
A				angles linear		mm		dwg no sheet 9 of 9 size			
				dr 2011-8-10		scale X		10118875 A4			
				enr 2011-8-10				type Product Customer Drawing			
				chr 2011-8-10				Rev. A			
				appd 2011/11							
sheet index		revision sheet									



FCIconnect.com

Copyright FCI.