

Excellent Integrated System Limited

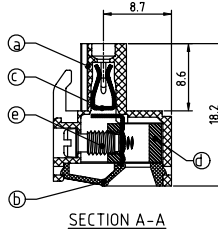
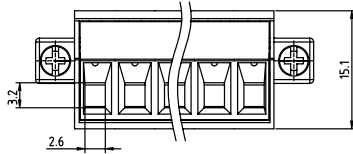
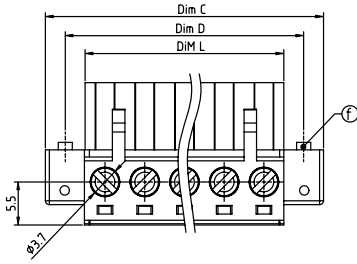
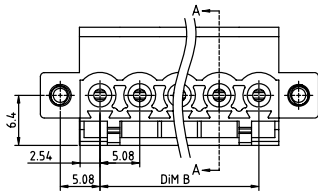
Stocking Distributor

Click to view price, real time Inventory, Delivery & Lifecycle Information:

[FCI](#)
[TJ02515700J0G](#)

For any questions, you can email us directly:
sales@integrated-circuit.com

PRODUCT NUMBER	PITCH
TJxx51x700J0G	5.08 mm



Material

- Itemⓐ Terminal body:Thermoplastic (UL94V-0)
- Itemⓑ Terminal cover:Thermoplastic (UL94V-0)
- Itemⓒ Female contact:High conductivity copper Tin plated
- Itemⓓ Clamp:Brass, Ni plated
- Itemⓔ Terminal screw:Steel Zinc plating "-" slot type
- Itemⓕ With flange screw:steel M2.5 Zinc plated "+/-" slot type

Electrical cULus

- Voltage rating:300V
- Current rating:20A
- Solid wire(AWG):12-24
- Stranded wire(AWG):12-24
- Torque(Lb-In): 5
- Screw: M3
- Wire strip length: 7-8mm
- Withstanding Voltage: 1.6KV
- Operating temperature: -40°C to +115°C
- Safety Approval:

Dimension

Dim L	Nx5.08
Dim B	(N-1)x5.08
Dim C	(N+2)x5.08
Dim D	(N+1)x5.08

N= Number of poles

Poles	Tolerance
2P-7P	±0.15
8P-12P	±0.25
13P-18P	±0.30
19P-24P	±0.40

PART NO.: TJ xx 51 x 7 0 0 J0 G

No. of poles	Color	RoHS compliant
02 2 poles	0 Black (RAL9005)	(lead<4%)
03 3 poles	2 Red (RAL3001/D)	In copper Alloy
...	3 Orange(RAL2011/P)	
...	4 Yellow(RAL1018/A)	
24 24 poles	5 Green(RAL6018/T)	
	6 Blue (RAL5015/A)	
	8 Grey(RAL7035/D)	
	9 White(RAL1102)	
	C Green(RAL6018/U)	

mat'l. code	surface ASME Y14.5	tolerance ASME Y14.5	projection	product family TERMINAL BLOCK
ltr	ecn	no	dr	date
tolerances unless otherwise specified				title TERMINAL BLOCK
angles	X.±0.5		MM	PLUGGABLE PLUG, WITH FLANGE, CONTACT ON UP SIDE
X'±1'	X.XX±0.3		scale	sheet 1 of 1 size
dr	HANKE FENG	032214		dwg no TJxx51x700J0G
enrg	HANKE FENG	032214		A4
chr	SHI JUN	032214		type CUSTOMER Drawing
sheet index	revision sheet	A 1		