

Excellent Integrated System Limited

Stocking Distributor

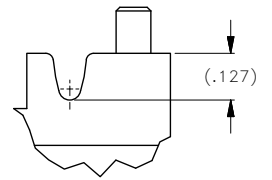
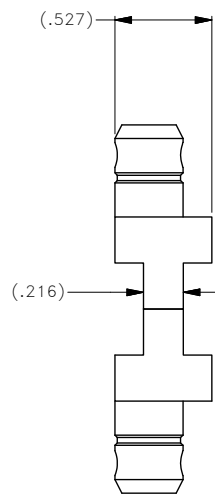
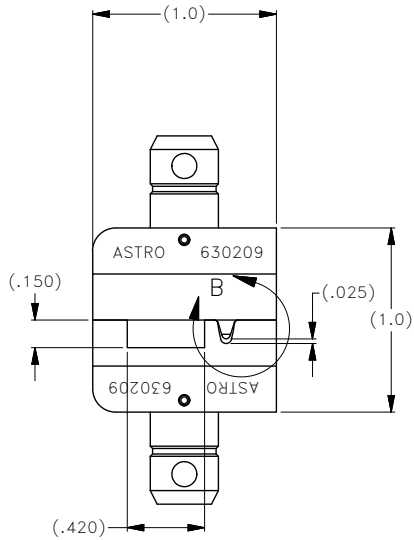
Click to view price, real time Inventory, Delivery & Lifecycle Information:

[Astro Tool Corp.](#)
[630209](#)

For any questions, you can email us directly:

sales@integrated-circuit.com

REVISIONS				
REV SYM	ECO NUMBER	DESCRIPTION	BY DATE	APP'D DATE
A		ORIGINAL RELEASE	JM 08-01-08	MK 08-01-08



DETAIL B

**UNCONTROLLED DOCUMENT
WILL NOT BE UPDATED**

NOTES:

1. THIS IS AN ICAD DRAWING DO NOT CHANGE MANUALLY.
2. MAT'L: REF: 0-6 TOOL STEEL

<p>THESE DRAWINGS, SPECIFICATIONS OR OTHER DATA ARE THE PROPERTY OF ASTRO TOOL CORP. AND MUST BE RETURNED UPON REQUEST. THEY CONTAIN INFORMATION OWNED AND/OR DEVELOPED BY ASTRO AT ITS OWN PRIVATE EXPENSE AND MAY NOT BE USED, DUPLICATED OR DISCLOSED TO OTHERS, IN WHOLE OR IN PART FOR DESIGN, MANUFACTURE, OR PROCUREMENT WITHOUT THE WRITTEN PERMISSION OF ASTRO TOOL CORP. EACH AND EVERY TIME.</p>	MATERIAL	ITEM	PART NO.	QTY.	DESCRIPTION/REMARKS
	---	DRN.	J. MATTHEWS	DATE	08-01-08
	---	CHK'D.	MK	DATE	08-01-08
	HEAT TREAT	APP'D.	DATE	TITLE	ASTRO TOOL CORP. 21615 S.W. TUALATIN VALLEY HWY., BEAVERTON OR 97006
---	APP'D.	DATE	DIE SET		
CREATED FROM AN INVENTOR MODEL. CHANGES MUST BE REFLECTED IN THE 3D PART	FINISH	TOLERANCE:		WHERE USED:	
DO NOT SCALE DRAWING	---	UNLESS OTHERWISE SPECIFIED FRACTIONS: 1/32 ANGLE: 1° DECIMAL INCHES: .1 ±.030 .XX ±.010 .XXX ±.005 .XXXX ±.0005 REMOVE BURRS AND BREAK SHARP EDGES .005-.015		SIZE	SCALE
				B	N.T.S.
				POSTING	P/N
					630209_ENV
					1 OF 1
					REV. A
					630209