

Excellent Integrated System Limited

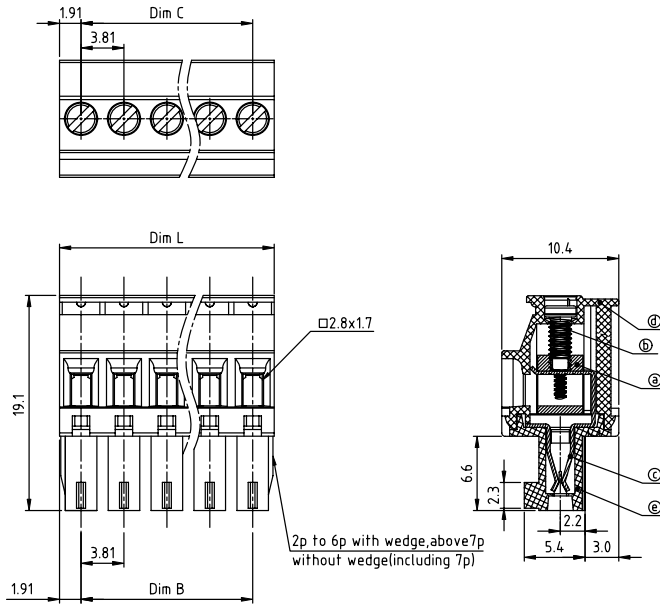
Stocking Distributor

Click to view price, real time Inventory, Delivery & Lifecycle Information:

[FCI](#)
[TS02315A00J0G](#)

For any questions, you can email us directly:
sales@integrated-circuit.com

PRODUCT NUMBER	PITCH
TSxx31xA00J0G	3.81 mm



Material:

- Item① Clamp: Brass(CuZn), Nickel plated
- Item② Terminal screw: Steel Zinc plating "-" slot type
- Item③ Female contact: PhBz, Tin plated
- Item④ Top body: Thermoplastic (UL94V-0)
- Item⑤ Bottom body: Thermoplastic (UL94V-0)

Electrical cULus/VDE

- Voltage rating: 300VAC/300VAC
- Current rating: 8A/10A
- Wire range: 1.5mm²
- Solid wire(AWG): 16-28
- Stranded wire(AWG): 16-28
- Torque: 1.7Lb-In./0.2Nm
- Screw: M2
- Wire strip length: 6-7mm
- Withstanding Voltage: 1.6KV/2.5KV
- Operating temperature: -40°C to +115°C
- Safety approval:

DIMENSION
N = Number of poles

Dim L	NX3.81
Dim B	(N-1)X3.81
Dim C	(N-1)X3.81

Poles	Tolerance
2p-6p	±0.15
7p-12p	±0.20
13p-16p	±0.25
17p-24p	±0.30

PART NO.: TS xx 31 x A 00J0 G

Solid block	0	Color	Black (RAL9005)	RoHS compliant (lead-4%) In copper Alloy
No. of poles	2	Color	Red (RAL3001/D)	
02	2 poles	Color	Orange(RAL2011/P)	
03	3 poles	Color	Yellow(RAL1018/A)	
...	...	Color	Green(RAL6018/T)	
24	24 poles	Color	Blue (RAL5015/A)	
		Color	Grey(RAL7035/D)	
		Color	White(RAL1102)	
		Color	Green(RAL6018/U)	

mat'l. code	surface ASME Y14.5	tolerance ASME Y14.5	projection 	product family TERMINAL BLOCK
ltr	ecn	no	dr	date
tolerances unless otherwise specified				title TERMINAL BLOCK
angles	X.±0.5		PLUGGABLE PLUG,HOOK ON ENTRY SIDE,WITHOUT FLANGE	
X'±1'	X.X±0.3		dwg no TSxx31xA00J0G	
	X.XX±0.1		sheet 1 of 1 size A4	
dr	EVIN ZHONG	041914	type CUSTOMER Drawing	
enrg	EVIN ZHONG	041914		
chr	HANKE FENG	041914		
appd	SHI JUN	041914		
sheet index	revision sheet	A 1		