

## Excellent Integrated System Limited

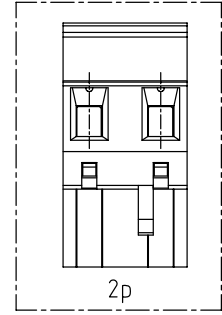
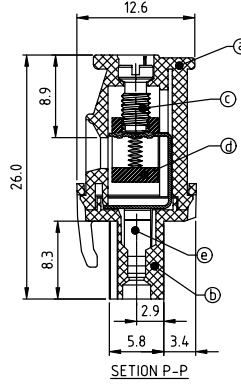
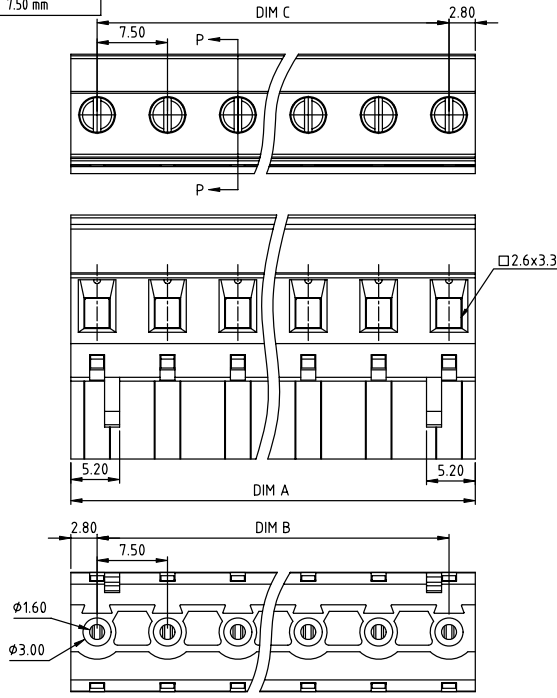
Stocking Distributor

Click to view price, real time Inventory, Delivery & Lifecycle Information:

[FCI](#)  
[TS02A15A00J0G](#)

For any questions, you can email us directly:  
[sales@integrated-circuit.com](mailto:sales@integrated-circuit.com)

PRODUCT NUMBER	PITCH
TSxxA1xA00J0G	750 mm



**Material**

- Item ① Top body: Thermoplastic (UL94V-0)
- Item ② Bottom body: Thermoplastic (UL94V-0)
- Item ③ Terminal screw: Steel Zinc plating "-" slot type
- Item ④ Clamp: Brass, Ni plated
- Item ⑤ Female contact: PhBz (CuSn), Tin plated

**Electrical cULus/TUV**

- Voltage rating: 300VAC/750VAC
- Current rating: 15A/15A
- Wire range: 0.2-2.5mm<sup>2</sup>
- Solid wire(AWG): 12-24
- Stranded wire(AWG): 12-24
- Torque: 3.5 Lb-In 0.4Nm
- Screw: M3
- Wire strip length: 6-7mm
- Withstanding Voltage: 1.6KV/6KV
- Operating temperature: -40°C to +115°C
- Safety Approval: cULus TUV

PART NO.: TS xx A1 x A 00J0 G

Dim A=(N-1)×7.5+5.6  
Dim B=(N-1)×7.5  
Dim C=(N-1)×7.5  
N=Number of poles

POLES	Tolerance
2p-6p	±0.20
7p-11p	±0.30
12p-16p	±0.40

Solid block	No. of poles	Color	RoHS compliant (lead<4%) In copper Alloy
0	2	Black (RAL9005)	
2	3	Red (RAL3001/D)	
3	4	Orange (RAL2011/P)	
4	5	Yellow (RAL1018/A)	
5	6	Green (RAL6018/T)	
6	8	Blue (RAL5015/A)	
7	9	Grey (RAL7035/D)	
8	16	White (RAL1102)	
9		Green (RAL6018/U)	

mat'l. code	surface ASME Y14.5	tolerance ASME Y14.5	projection	product family
ltr ecn no dr date	tolerances unless otherwise specified	ASME Y14.5	MM	TERMINAL BLOCK
angles	X.±0.5			title
X'±1'	X.X±0.3			TERMINAL BLOCK
	X.XX±0.1			PLUGGABLE PLUG,HOOK ON ENTRY SIDE,WITHOUT FLANGE
dr EVIN ZHONG 041914				scale
enr EVIN ZHONG 041914				FCI
chr HANKE FENG 041914				dwg no
appd SHI JUN 041914				TSxxA1xA00J0G
sheet index	revision sheet	A 1		type
				CUSTOMER Drawing