

Excellent Integrated System Limited

Stocking Distributor

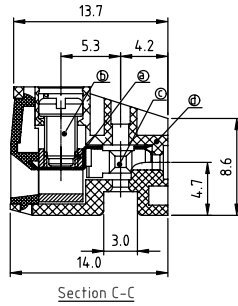
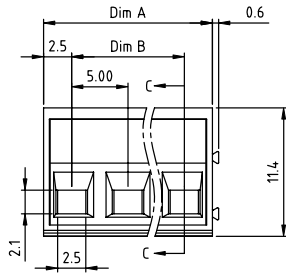
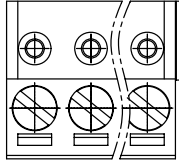
Click to view price, real time Inventory, Delivery & Lifecycle Information:

[FCI](#)
[TT02018000J0G](#)

For any questions, you can email us directly:

sales@integrated-circuit.com

PRODUCT NUMBER	PITCH
TTxx01x000J0G	5.00 mm



Material

- Item ① Clamp: Brass(CuZn) Ni plated
- Item ② Terminal screw: Steel Zinc plating "-" slot type
- Item ③ Female contact: PhBz, Au plated.
- Item ④ Terminal(housing): Thermoplastic (UL94 V-0)

Electrical cULus

- Voltage rating: 300VAC
- Current rating: 10A
- Wire range:
- Solid wire(AWG): 16-22
- Stranded wire(AWG): 16-22
- Torque(Lb-In): 1.7
- Screw: M3
- Wire strip length: 5-6mm
- Withstanding Voltage: 1.6KV
- Operating temperature: -40°C to +115°C
- Safety approval: cULus

N = Number of poles
Dim A=Nx5.0
Dim B=(N-1)x5.0

poles	Dim A	Dim B
2-6p	±0.15	±0.10
7-12p	±0.25	±0.15
13-18p	±0.30	±0.20
19-24p	±0.40	±0.30

PART NO.: TT xx 01 x 0 00J0 G

- | | | | | | |
|---------------|----------|------------|-------------------|----------------|-----------------|
| End Stackable | 0 | Body Color | Black (RAL9005) | RoHS compliant | In copper Alloy |
| No. of poles | 2 | | Red (RAL3001/D) | | |
| 02 | 2 poles | 3 | Orange(RAL2011/P) | | |
| 03 | 3 poles | 4 | Yellow(RAL1018/A) | | |
| ... | ... | 5 | Green(RAL6018/T) | | |
| 24 | 24 poles | 6 | Blue (RAL5015/A) | | |
| | | 8 | Grey(RAL7035/D) | | |
| | | 9 | White(RAL1102) | | |
| | | C | Green(RAL6018/U) | | |

mat'l. code	surface ASME Y14.5	tolerance ASME Y14.5	projection	product family TERMINAL BLOCK
ltr	ecn	no	dr	date
tolerances unless otherwise specified				title TERMINAL BLOCK
angles	X.±0.5		MM	PLUGGABLE,180D WIRE INLET,END STACKABLE
X'±1'	X.X±0.3		scale	dwg no TTxx01x000J0G
dr	EVIN ZHONG	041614	FCI	sheet 1 of 1
enr	EVIN ZHONG	041614		size A4
chr	HANKE FENG	041614		type CUSTOMER Drawing
appd	SHI JUN	041614		
sheet index	revision sheet	A 1		