

Excellent Integrated System Limited

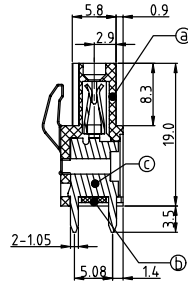
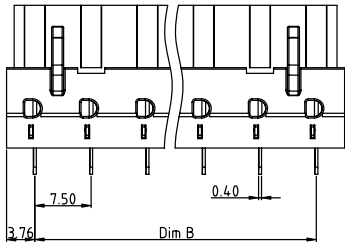
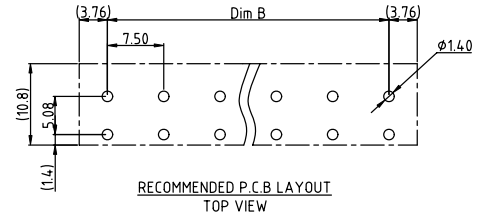
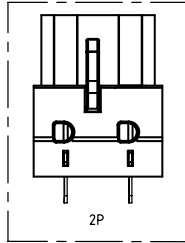
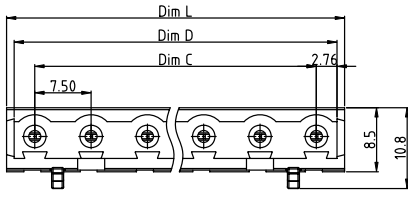
Stocking Distributor

Click to view price, real time Inventory, Delivery & Lifecycle Information:

[FCI](#)
[V702A15000J0G](#)

For any questions, you can email us directly:
sales@integrated-circuit.com

PRODUCT NUMBER	PITCH
V7xxA1x000J0G	7.50 mm



- Material:
- Item ① Terminal body: Thermoplastic (UL94V-0)
 - Item ② Terminal Cover: Thermoplastic (UL94V-0)
 - Item ③ Female contact: PhBz(CuSn), Tin plated
- Electrical cULus
- Voltage rating: 300VAC
 - Current rating: 10A
 - Withstanding Voltage: 1.6kv
 - Operating temperature: -40°C to +115°C
 - Soldering temperature: 260°C±5°C/5 Sec
 - Safety Approval:

PART NO.: V7 xx A 1 x 0 00J0 G

N=Number of poles
Dim L=(N-1)×7.50+7.52
Dim B=(N-1)×7.50
Dim C=(N-1)×7.50
Dim D=(N-1)×7.50+5.52

poles	Tolerance
2-5p	±0.15
6-10p	±0.25
11-16p	±0.35

Solid block	No. of poles	Color	RoHS compliant (lead<4%) In copper Alloy
0	2	Black (RAL9005)	
02	3	Red (RAL3001/D)	
03	4	Orange(RAL2011/P)	
...	...	Yellow(RAL1018/A)	
...	...	Green(RAL6018/T)	
16	16	Blue (RAL5015/A)	
		Grey(RAL7035/D)	
		White(RAL1102)	
		Green(RAL6018/U)	

mat'l. code	surface ASME Y14.5	tolerance ASME Y14.5	projection 	product family TERMINAL BLOCK
ltr	ecn	no	dr	date
tolerances unless otherwise specified				title TERMINAL BLOCK PLUGGABLE PCB PLUG,VERTICAL
angles	X.±0.5	X.X±0.3	X.XX±0.1	scale
X'±1'				
dr	EVIN ZHONG	043014		
enr	EVIN ZHONG	043014		
chr	HANKE FENG	043014		
appd	SHI JUN	043014		
sheet index	revision sheet	A 1		
dwg no		sheet 1 of 1		size
V7xxA1x000J0G				A4
type		CUSTOMER Drawing		