

## Excellent Integrated System Limited

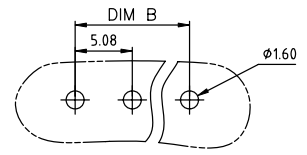
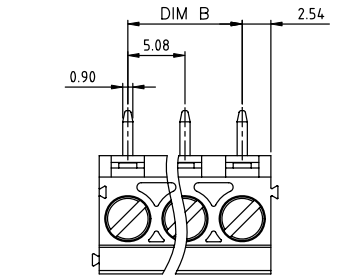
Stocking Distributor

Click to view price, real time Inventory, Delivery & Lifecycle Information:

[FCI](#)  
[VJ04215300J0G](#)

For any questions, you can email us directly:  
[sales@integrated-circuit.com](mailto:sales@integrated-circuit.com)

|                |        |
|----------------|--------|
| PRODUCT NUMBER | PITCH  |
| VJxx21x300J0G  | 5.08mm |

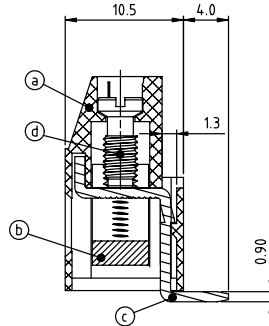
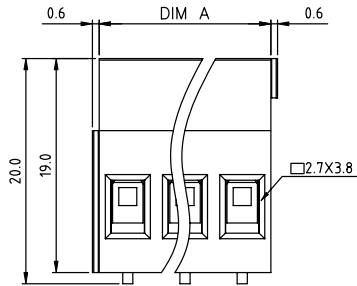


RECOMMENDED P.C.B LAYOUT  
TOP VIEW

Material:

- Item① Terminal housing: Thermoplastic (UL 94V-0)
- Item② Clamp: Brass Ni plated
- Item③ Solder pin: Brass Tin plated
- Item④ Terminal screw: Steel Zinc plating"- "slot type

- Electrical cULus VDE
- Voltage rating: 300VAC 450V
  - Current rating: 20A 24A
  - Wire range: 0.2-2.5mm<sup>2</sup>
  - Solid wire(AWG): 12-30
  - Stranded wire(AWG): 12-30
  - Torque: 3.5 Lb-in 0.5 N.m
  - Screw: M3
  - Wire strip length: 6-7mm
  - Withstanding Voltage: 1.6KV 2.5KV
  - Operating temperature: -40°C to +115°C
  - Soldering temperature: 260°C±5°C/5 Sec
  - Safety Approval:



PART NO.: VJ xx 2 1 x 3 00J0 G

Dimension A&B

|       |            |
|-------|------------|
| DIM A | N×5.08     |
| DIM B | (N-1)×5.08 |

N=Number of poles

| Poles   | DimA&B Tolerance |
|---------|------------------|
| 4P-8P   | ±0.15            |
| 9P-14P  | ±0.25            |
| 15P-20P | ±0.35            |
| 21P-24P | ±0.40            |

- |              |                     |                 |
|--------------|---------------------|-----------------|
| Solid block  | Color               | RoHS compliant  |
| No. of poles | 0 Black (RAL9005)   | (lead<4%)       |
| 04 4 poles   | 2 Red (RAL3001/D)   | In copper Alloy |
| 05 5 poles   | 3 Orange(RAL2011/P) |                 |
| ...          | 4 Yellow(RAL1018/A) |                 |
| ...          | 5 Green(RAL6018/T)  |                 |
| 24 24 poles  | 6 Blue (RAL5015/A)  |                 |
|              | 8 Grey(RAL7035/D)   |                 |
|              | 9 White(RAL1102)    |                 |
|              | C Green(RAL6018/U)  |                 |

|                       |                                       |                         |   |                |
|-----------------------|---------------------------------------|-------------------------|---|----------------|
| mat'l. code           | surface<br>ASME Y14.5                 | tolerance<br>ASME Y14.5 | projection                              | product family |
| ltr ecn no dr date    | tolerances unless otherwise specified | ASME Y14.5              | TERMINAL BLOCK                          | TERMINAL BLOCK |
| angles                | X.±0.5                                | MM                      | TERMINAL BLOCK                          |                |
| X'±1'                 | X.X±0.3                               | scale                   | RISING CLAMP,90D WIRE INLET,SOLID BLOCK |                |
| dr EVIN ZHONG 040914  | X.XX±0.1                              | FCI                     | sheet 1 of 1                            | size A4        |
| enr EVIN ZHONG 040914 |                                       |                         | VJxx21x300J0G                           |                |
| chr HANKE FENG 040914 |                                       |                         | CUSTOMER Drawing                        |                |
| appd SHI JUN 040914   |                                       |                         |   |                |
| sheet index           | revision sheet                        | A 1                     |   |                |