

Excellent Integrated System Limited

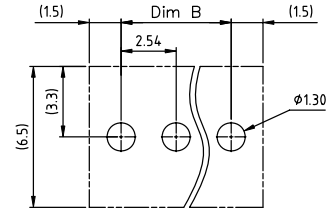
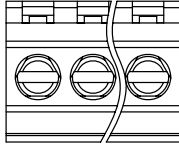
Stocking Distributor

Click to view price, real time Inventory, Delivery & Lifecycle Information:

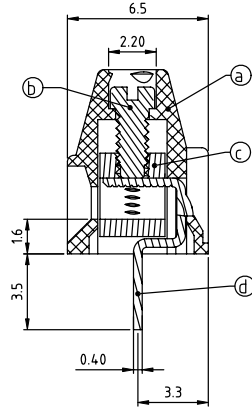
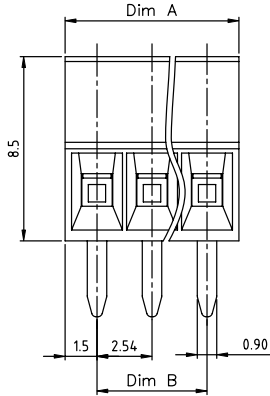
[FCI](#)
[VN02A15000J0G](#)

For any questions, you can email us directly:
sales@integrated-circuit.com

PRODUCT NUMBER	PITCH
VNxxA1x000J0G	254 mm



RECOMMENDED P.C.B. LAYOUT
TOP VIEW



Material

- Item ① Terminal housing: Thermoplastic (UL94V-0)
- Item ② Terminal screw: Steel Zinc plating "-" slot type
- Item ③ Clamp: Brass, Ni plated
- Item ④ solder pin: Brass, Tin plated

Electrical cULus

- Voltage rating: 150VAC
- Current rating: 6A
- Wire range:
- Solid wire(AWG): 18-30
- Stranded wire(AWG): 18-30
- Torque: 1.3Lb-in
- Screw: M1.6
- Wire strip length: 4-5mm
- Withstanding Voltage: 1.3KV
- Operating temperature: -40°C to +115°C
- Soldering temperature: 260°C±5°C/5 Sec
- Safety Approval: cULus

PART NO.: VN xx A 1 x 0 00J0 G

N = Number of poles
Dim A=N×2.54+0.4
Dim B=(N-1)×2.54

poles	Dim A	Dim B
2-6p	±0.15	±0.10
7-12p	±0.20	±0.20
13-18p	±0.30	±0.25
19-24p	±0.40	±0.30

Solid Block	Color	RoHS compliant
0	Black (RAL9005)	(lead<4%) In copper Alloy
2	Red (RAL3001/D)	
02	2 poles Orange(RAL2011/P)	
03	3 poles Yellow(RAL1018/A)	
...	...	
5	Green(RAL6018/T)	
6	Blue (RAL5015/A)	
8	Grey(RAL7035/D)	
9	White(RAL1102)	
C	Green(RAL6018/U)	

mat'l. code	surface ASME Y14.5	tolerance ASME Y14.5	projection	product family TERMINAL BLOCK
ltr	ecn	no	dr	date
tolerances unless otherwise specified				title TERMINAL BLOCK RISING CLAMP,180D WIRE INLET
angles	X.±0.5		MM	dwg no
X'±1'	X.X±0.3		scale	sheet 1 of 1
dr	EVIN_ZHONG	040714	FCI	size A4
enfr	EVIN_ZHONG	040714		type CUSTOMER Drawing
chr	HANKE_FENG	040714		
appd	SHI JUN	040714		
sheet index	revision sheet	A 1		