

Excellent Integrated System Limited

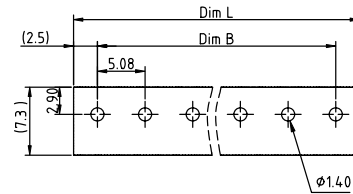
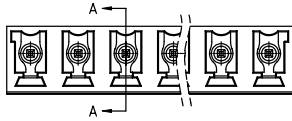
Stocking Distributor

Click to view price, real time Inventory, Delivery & Lifecycle Information:

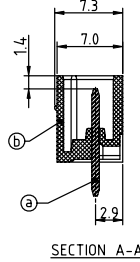
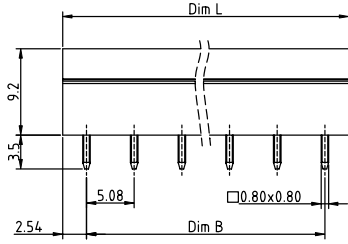
[FCI](#)
[VS02515000J0G](#)

For any questions, you can email us directly:
sales@integrated-circuit.com

PRODUCT NUMBER	PITCH
VSxx51x000J0G	5.08 mm



RECOMMENDED P.C.B. LAYOUT
TOP VIEW



SECTION A-A

- Material:
- Item ① Contact pin: Copper, Tin plated
 - Item ② Terminal(housing): Thermoplastic (UL94V-0)
- Electrical:
- Voltage rating: 300V
 - Current rating: 8A
 - Withstanding Voltage: 1.6 KV
 - Operating temperature: -40°C to +115°C
 - Soldering temperature: 260°C±5°C/5 Sec
 - Safety Approval: us

DIMENSION

Dim L	N×5.08
Dim B	(N-1)×5.08

N=Number of poles

Poles	Tolerance
2P-5P	±0.15
6P-10P	±0.25
11P-15P	±0.30
16P-24P	±0.40

PART NO.: VS xx 51 x 0 00J0 G

Solid block	No. of poles	Color	RoHS compliant (lead-4%) In copper Alloy
0	2	Black (RAL9005)	
1	3	Red (RAL3001/D)	
2	4	Orange(RAL2011/P)	
3	5	Yellow(RAL1018/A)	
4	6	Green(RAL6018/T)	
5	7	Blue (RAL5015/A)	
6	8	Grey(RAL7035/D)	
7	9	White(RAL1102)	
8	24	Green(RAL6018/U)	

mat'l. code	surface ASME Y14.5	tolerance ASME Y14.5	projection	product family TERMINAL BLOCK
ltr	ecn no	dr	date	title TERMINAL BLOCK
tolerances unless otherwise specified				PLUGGABLE SOCKET,CLOSE VERTICAL
angles	X.±0.5			dwg no VSxx51x000J0G
X'±1'	X.X±0.3			sheet 1 of 1
	X.XX±0.1			size A4
dr	EVIN ZHONG	042214		type CUSTOMER Drawing
enrg	EVIN ZHONG	042214		
chr	HANKE FENG	042214		
appd	SHI JUN	042214		
sheet index	revision sheet	A 1		