



Distributor of FCI: Excellent Integrated System Limited

Datasheet of YK33202030J0G - Connector Barrier Block Strip 2 Circuit 0.325" (8.26mm)

Contact us: sales@integrated-circuit.com Website: www.integrated-circuit.com

Excellent Integrated System Limited

Stocking Distributor

Click to view price, real time Inventory, Delivery & Lifecycle Information:

[FCI](#)

[YK33202030J0G](#)

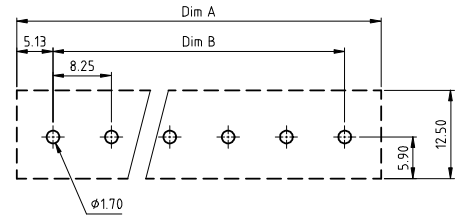
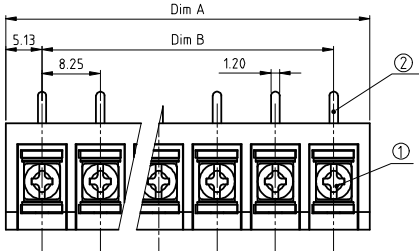
For any questions, you can email us directly:

sales@integrated-circuit.com

Copyright FCI

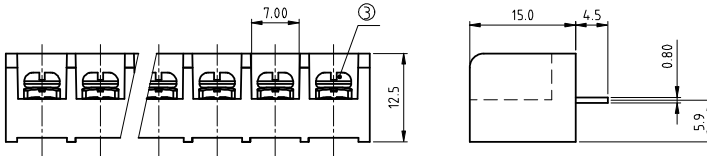
FCIconnect.com

PRODUCT NUMBER	PITCH
YK332xx0x0J0G	8.25 mm



RECOMMENDED P.C.B. LAYOUT
BOTTOM VIEW

MATERIALS & ELECTRICAL
 RATED VOLTAGE & CURRENT: 300 V, 20 A / 300 V, 32 A
 WITHSTAND VOLTAGE: AC 2500V/Min
 INSULATION RESISTANCE: 1000 M Ω OR MORE AT DC 500 V
 OPERATING TEMPERATURE RANG: -40 °C +115 °C
 SCREW TORQUE VALUE: 8.8 Lb-in
 WIRE RANGE: 22 - 12 AWG
 1) HOUSING: Thermoplastic, UL 94 V-0 BLACK
 2) TERMINAL: BRASS, 0.8t
 3) TERMINAL SCREWS: STEEL,M3
 APPROVAL:



DIMENSION

Dim A	N \times 8.25 \pm 2.0
Dim B	(N-1) \times 8.25

N=Number of poles

Poles	Tolerance
2p-5p	\pm 0.20
6p-10p	\pm 0.25
11p-16p	\pm 0.35
17p-24p	\pm 0.40
25p-32p	\pm 0.50

PART NO.: YK 332xx 0 x 0 J0G

No. of poles	Plated	RoHS compliant (lead<4% In copper Alloy)
02 2 poles	Code Terminal Screw	
03 3 poles	0 G/F G/F	
...	1 G/F Zinc	
32 32 poles	2 Tin G/F	
	3 Tin Zinc	

mat'l. code	surface ASME Y14.5	tolerance ASME Y14.5	projection	product family
ltr	ecn	no	dr	date
tolerances unless otherwise specified				TERMINAL BLOCK
angles	X \pm 0.5	X \pm 0.3	X,XX \pm 0.1	title
X' \pm 1'	scale			TERMINAL BLOCK
dr	EVAN LU	061614	FCI	BARRIER TYPE
enqr	EVAN LU	061614		dwg no
chr	HANKE FENG	061614		YK332xx0x0J0G
oppd	SHI JUN	061614		sheet 1 of 1
sheet index	revision sheet	A 1		size A4
				type CUSTOMER Drawing

form: A4mmXLC

PDS: Rev :A

STATUS:Released

Printed: Jul 16, 2014