

Excellent Integrated System Limited

Stocking Distributor

Click to view price, real time Inventory, Delivery & Lifecycle Information:

[GainSpan Corporation](#)
[GS2011M-PGM1](#)

For any questions, you can email us directly:
sales@integrated-circuit.com



GS2011M and GS2100M Single-Site Programmable

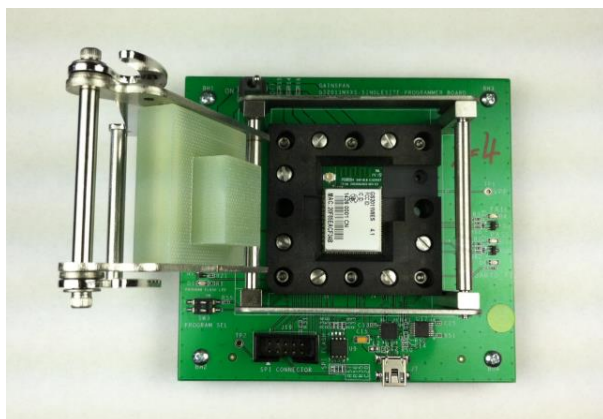
PRODUCT OVERVIEW

The GainSpan GS2011M and GS2100M single-site flash programmers allow users to program GainSpan Wi-Fi modules based on the GS2000 SoC, one at a time. Users can select and load the WLAN and APP firmware binaries. The single-site programmer kit includes programmer hardware and software application/GUI to select and load firmware binaries into the module.

The programmer hardware includes a single site flash programming board with a Wi-Fi module socket and a USB connector through which the programming software can access the module and program it.

The programmer kit includes simple GUI application software for ease of use in a production environment. The GUI allows selection of module type and firmware binaries and displays programming success/failure and operation progress and status.

The programmer kit also includes a Quick Start Guide and a detailed User Guide that provides a description of the tool and the procedures for programming modules.

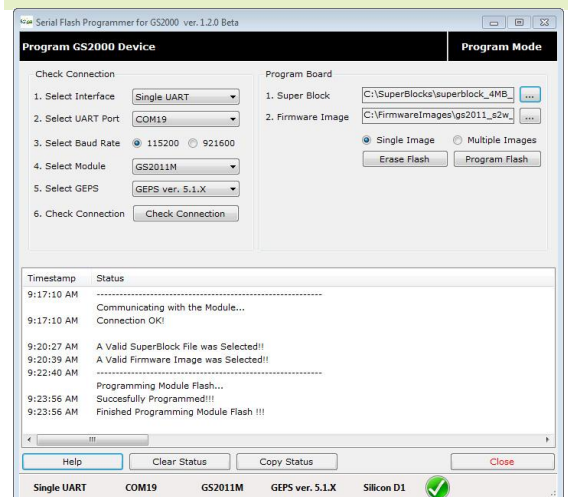


BENEFITS:

- GainSpan single-site programmer for fast programming of Wi-Fi modules
- Simple, socketed hardware, designed for quick and easy loading of Wi-Fi modules
- Simple GUI for ease of programming in production environment
- Complete documentation package

FEATURES:

- Single-site programmers for GainSpan GS2000 SoC based Wi-Fi modules
 - GS2011Mxx
 - GS2100Mxx
 - GS2011MxxS
- Programming over UART/SPI serial interface
 - UART speed up to 921 Kbps
 - Planned future support for SPI interface
- Programmer kit includes
 - Single-site programmer board
 - Programming Software and GUI
 - Cables
- Programmer Software/GUI Features
 - GUI displays COM port selection, programming status and programming success/failure
 - Allows selection of module type and firmware versions (WLAN/APP single image and superbloc binaries)
 - Allows programming of single or multiple copies into flash
 - DOS and GUI tools available
 - Allows erase of selected portions of flash to speed up programming time
 - Verification of data written into flash



PRODUCT BRIEF

SINGLE-SITE PROGRAMMER HARDWARE SPECIFICATION

Feature	Description
Socket for RF Module	Sockets for GS2011Mxx, GS2100Mxx and GS2011MxxS Wi-Fi Modules
Power Source	3.3V DC power jack
Power on/off switch	Turn power on/off
Run/Program switch	Turned to "Program" for programming module
Connection to PC/Laptop	Mini-USB cable
SPI Connector	Programming via SPI interface (roadmap feature)
DIP Switches	For selection of UART speeds (115Kbps, 921Kbps)

SINGLE-SITE PROGRAMMER ORDERING INFORMATION

ITEM	PART NUMBER	Description
GS2011Mxx Single Site Programmer	GS2011M-PGM1	Used for programming the GS2011Mxx Wi-Fi modules
GS2100Mxx Single Site Programmer	GS2100M-PGM1	Used for programming the GS2100Mxx Wi-Fi modules
GS2011MxxS Single Site Programmer	GS2011MS-PGM1	Used for programming the GS2011MxxS Wi-Fi modules