

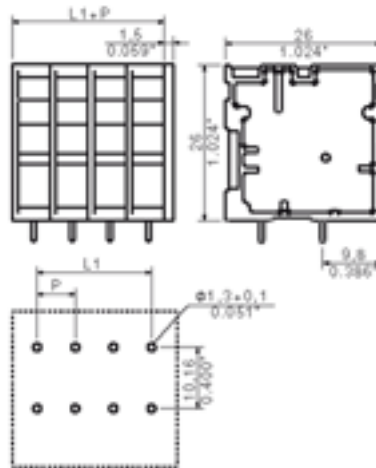
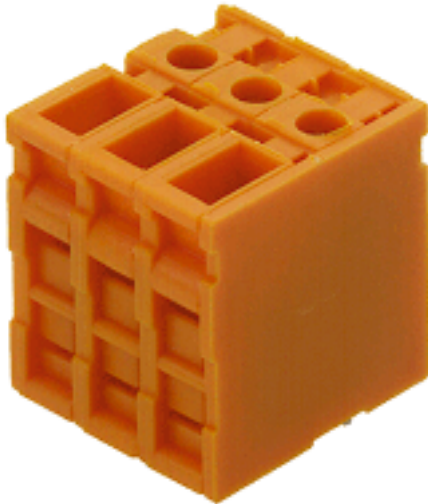
Excellent Integrated System Limited

Stocking Distributor

Click to view price, real time Inventory, Delivery & Lifecycle Information:

[Weidmüller](#)
[1786210000](#)

For any questions, you can email us directly:
sales@integrated-circuit.com



General ordering data

Order No.	1786210000
Part designation	TOP4GS4/180 6.35 OR
Version	PCB terminal, TOP connection, Soldered connection, Clamping range, max.: 6 mm ² , Pitch: 6.35 mm, No. of poles: 4, 180°, Box
EAN	4032248200849
Qty.	50 pc(s).

System parameters

Product family	System TOP4GS
Conductor connection system	TOP connection
Fitted to PCB	Soldered connection
Outgoing direction of conductor	180°
Pitch	6.35 mm
Pitch in inch	0.25 inch
No. of poles	4
Fitted by customer	no
No. of rows	1
Solder pin length	3.5 mm
Dia. of fitting hole	1.3 mm
Fitting hole tolerance	+ 0.1 mm
No. of solder pins per pole	2
Screwdriver blade	0.6 x 3.5
Screwdriver blade standard	DIN 5264
Tightening torque, min.	0.5 Nm
Tightening torque, max.	0.6 Nm
Clamping screw	M 3
Stripping length	13 mm
L1 in mm	19.05 mm
L1 in inch	0.75 inch

Material data

Insulating material	PA
Colour	orange

Material data

colour chart	Similar to RAL 2000
Insulating material group	I
Flammability class UL 94	V-2
CTI	>= 600
Contact base material	E-Cu
Contact surface	tinned
Storage temperature, min.	-25 °C
Storage temperature, max.	55 °C

Connectable conductors

Clamping range, min.	0.13 mm ²
Clamping range, max.	6 mm ²
AWG, min.	26
AWG, max.	10
Solid, min. H05(07) V-U	0.5 mm ²
Solid, max. H05(07) V-U	6 mm ²
Flexible, min. H05(07) V-K	0.5 mm ²
Flexible, max. H05(07) V-K	4 mm ²
With wire end ferrule, acc. to DIN 46 228/1, min.	0.5 mm ²
With wire end ferrule, acc. to DIN 46 228/1, max.	4 mm ²
w. plastic collar ferrule, DIN 46228 pt 4, min.	0.5 mm ²
w. plastic collar ferrule, DIN 46228 pt 4, max.	4 mm ²
Gauge to EN 60999 a x b; ø	2.8 mm x 2.4 mm;

DIN IEC rating data

Rated current, min. No. pins (Tu=20°C)	32 A
Rated current, min. No. pins (Tu=40°C)	32 A
Rated voltage for overvoltage class/pollution severity II/2	320 V
Rated voltage for overvoltage class/pollution severity III/2	320 V
Rated voltage for overvoltage class/pollution severity III/3	320 V
Rated impulse withstand voltage for overvoltage class/pollution severity II/2	2.5 kV
Rated impulse withstand voltage for overvoltage class/pollution severity III/2	2.5 kV
Rated impulse withstand voltage for overvoltage class/pollution severity III/3	2.5 kV

CSA rating data

Rated voltage (Use group D)	300 V
Rated current (Use group D)	10 A
AWG conductor (field wiring), min.	26
AWG conductor (field wiring), max.	10

UL 1059 rating data

Rated voltage (Use group D)	300 V
Rated current (Use group D)	10 A
AWG conductor, min.	26
AWG conductor, max.	10

UL 1059 rating data

Approvals

Approvals institutes



Downloads

CAD Library (P-CAD Format - Standard) TOP 4GS.LIB

Classifications

ETIM 2.0	NK
ETIM 3.0	EC001284
eClass 4.1	NK
eClass 5.0	NK
eClass 5.1	NK

Similar products

Order No.	Part designation	Version
1786190000	TOP4GS2/180 6.35 OR	PCB terminal, TOP connection, Soldered connection, Clamping range, max.: 6 mm ² , Pitch: 6.35 mm, No. of poles: 2, 180°, Box
1786200000	TOP4GS3/180 6.35 OR	PCB terminal, TOP connection, Soldered connection, Clamping range, max.: 6 mm ² , Pitch: 6.35 mm, No. of poles: 3, 180°, Box
1786220000	TOP4GS5/180 6.35 OR	PCB terminal, TOP connection, Soldered connection, Clamping range, max.: 6 mm ² , Pitch: 6.35 mm, No. of poles: 5, 180°, Box
1786230000	TOP4GS6/180 6.35 OR	PCB terminal, TOP connection, Soldered connection, Clamping range, max.: 6 mm ² , Pitch: 6.35 mm, No. of poles: 6, 180°, Box
1786240000	TOP4GS7/180 6.35 OR	PCB terminal, TOP connection, Soldered connection, Clamping range, max.: 6 mm ² , Pitch: 6.35 mm, No. of poles: 7, 180°, Box
1786250000	TOP4GS8/180 6.35 OR	PCB terminal, TOP connection, Soldered connection, Clamping range, max.: 6 mm ² , Pitch: 6.35 mm, No. of poles: 8, 180°, Box
1786260000	TOP4GS9/180 6.35 OR	PCB terminal, TOP connection, Soldered connection, Clamping range, max.: 6 mm ² , Pitch: 6.35 mm, No. of poles: 9, 180°, Box
1786270000	TOP4GS10/180 6.35 OR	PCB terminal, TOP connection, Soldered connection, Clamping range, max.: 6 mm ² , Pitch: 6.35 mm, No. of poles: 10, 180°, Box
1786280000	TOP4GS11/180 6.35 OR	PCB terminal, TOP connection, Soldered connection, Clamping range, max.: 6 mm ² , Pitch: 6.35 mm, No. of poles: 11, 180°, Box

1786290000 TOP4GS12/180 6.35 OR

PCB terminal, TOP connection, Soldered connection, Clamping range, max.: 6 mm², Pitch: 6.35 mm, No. of poles: 12, 180°, Box