

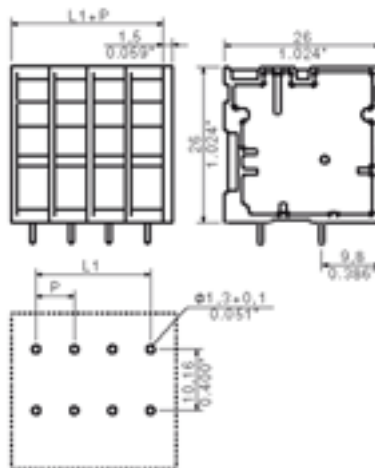
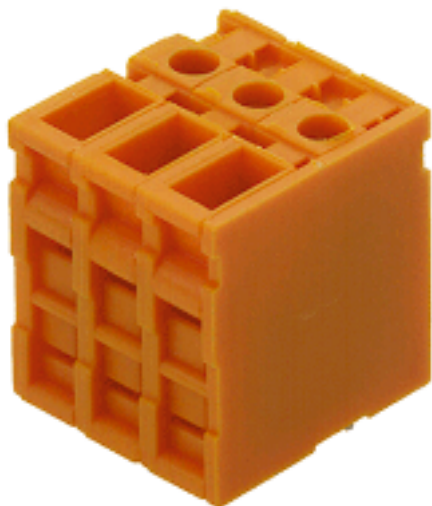
## Excellent Integrated System Limited

Stocking Distributor

Click to view price, real time Inventory, Delivery & Lifecycle Information:

[Weidmüller](#)  
[1786220000](#)

For any questions, you can email us directly:  
[sales@integrated-circuit.com](mailto:sales@integrated-circuit.com)



#### General ordering data

|                  |                                                                                                                                         |
|------------------|-----------------------------------------------------------------------------------------------------------------------------------------|
| Order No.        | 1786220000                                                                                                                              |
| Part designation | TOP4GS5/180 6.35 OR                                                                                                                     |
| Version          | PCB terminal, TOP connection, Soldered connection, Clamping range, max.: 6 mm <sup>2</sup> , Pitch: 6.35 mm, No. of poles: 5, 180°, Box |
| EAN              | 4032248200856                                                                                                                           |
| Qty.             | 50 pc(s).                                                                                                                               |

#### System parameters

|                                 |                     |
|---------------------------------|---------------------|
| Product family                  | System TOP4GS       |
| Conductor connection system     | TOP connection      |
| Fitted to PCB                   | Soldered connection |
| Outgoing direction of conductor | 180°                |
| Pitch                           | 6.35 mm             |
| Pitch in inch                   | 0.25 inch           |
| No. of poles                    | 5                   |
| Fitted by customer              | no                  |
| No. of rows                     | 1                   |
| Solder pin length               | 3.5 mm              |
| Dia. of fitting hole            | 1.3 mm              |
| Fitting hole tolerance          | + 0.1 mm            |
| No. of solder pins per pole     | 2                   |
| Screwdriver blade               | 0.6 x 3.5           |
| Screwdriver blade standard      | DIN 5264            |
| Tightening torque, min.         | 0.5 Nm              |
| Tightening torque, max.         | 0.6 Nm              |
| Clamping screw                  | M 3                 |
| Stripping length                | 13 mm               |
| L1 in mm                        | 25.4 mm             |
| L1 in inch                      | 1 inch              |

#### Material data

|                     |        |
|---------------------|--------|
| Insulating material | PA     |
| Colour              | orange |

#### Material data

|                           |                     |
|---------------------------|---------------------|
| colour chart              | Similar to RAL 2000 |
| Insulating material group | I                   |
| Flammability class UL 94  | V-2                 |
| CTI                       | >= 600              |
| Contact base material     | E-Cu                |
| Contact surface           | tinned              |
| Storage temperature, min. | -25 °C              |
| Storage temperature, max. | 55 °C               |

#### Connectable conductors

|                                                   |                      |
|---------------------------------------------------|----------------------|
| Clamping range, min.                              | 0.13 mm <sup>2</sup> |
| Clamping range, max.                              | 6 mm <sup>2</sup>    |
| AWG, min.                                         | 26                   |
| AWG, max.                                         | 10                   |
| Solid, min. H05(07) V-U                           | 0.5 mm <sup>2</sup>  |
| Solid, max. H05(07) V-U                           | 6 mm <sup>2</sup>    |
| Flexible, min. H05(07) V-K                        | 0.5 mm <sup>2</sup>  |
| Flexible, max. H05(07) V-K                        | 4 mm <sup>2</sup>    |
| With wire end ferrule, acc. to DIN 46 228/1, min. | 0.5 mm <sup>2</sup>  |
| With wire end ferrule, acc. to DIN 46 228/1, max. | 4 mm <sup>2</sup>    |
| w. plastic collar ferrule, DIN 46228 pt 4, min.   | 0.5 mm <sup>2</sup>  |
| w. plastic collar ferrule, DIN 46228 pt 4, max.   | 4 mm <sup>2</sup>    |
| Gauge to EN 60999 a x b; ø                        | 2.8 mm x 2.4 mm;     |

#### DIN IEC rating data

|                                                                                |        |
|--------------------------------------------------------------------------------|--------|
| Rated current, min. No. pins (Tu=20°C)                                         | 32 A   |
| Rated current, min. No. pins (Tu=40°C)                                         | 32 A   |
| Rated voltage for overvoltage class/pollution severity II/2                    | 320 V  |
| Rated voltage for overvoltage class/pollution severity III/2                   | 320 V  |
| Rated voltage for overvoltage class/pollution severity III/3                   | 320 V  |
| Rated impulse withstand voltage for overvoltage class/pollution severity II/2  | 2.5 kV |
| Rated impulse withstand voltage for overvoltage class/pollution severity III/2 | 2.5 kV |
| Rated impulse withstand voltage for overvoltage class/pollution severity III/3 | 2.5 kV |

#### CSA rating data

|                                    |       |
|------------------------------------|-------|
| Rated voltage (Use group D)        | 300 V |
| Rated current (Use group D)        | 10 A  |
| AWG conductor (field wiring), min. | 26    |
| AWG conductor (field wiring), max. | 10    |

#### UL 1059 rating data

|                             |       |
|-----------------------------|-------|
| Rated voltage (Use group D) | 300 V |
| Rated current (Use group D) | 10 A  |
| AWG conductor, min.         | 26    |
| AWG conductor, max.         | 10    |

UL 1059 rating data

Approvals

Approvals institutes



Downloads

CAD Library (P-CAD Format - Standard) TOP 4GS.LIB

Classifications

|            |          |
|------------|----------|
| ETIM 2.0   | NK       |
| ETIM 3.0   | EC001284 |
| eClass 4.1 | NK       |
| eClass 5.0 | NK       |
| eClass 5.1 | NK       |

Similar products

| Order No.  | Part designation     | Version                                                                                                                                  |
|------------|----------------------|------------------------------------------------------------------------------------------------------------------------------------------|
| 1786190000 | TOP4GS2/180 6.35 OR  | PCB terminal, TOP connection, Soldered connection, Clamping range, max.: 6 mm <sup>2</sup> , Pitch: 6.35 mm, No. of poles: 2, 180°, Box  |
| 1786200000 | TOP4GS3/180 6.35 OR  | PCB terminal, TOP connection, Soldered connection, Clamping range, max.: 6 mm <sup>2</sup> , Pitch: 6.35 mm, No. of poles: 3, 180°, Box  |
| 1786210000 | TOP4GS4/180 6.35 OR  | PCB terminal, TOP connection, Soldered connection, Clamping range, max.: 6 mm <sup>2</sup> , Pitch: 6.35 mm, No. of poles: 4, 180°, Box  |
| 1786230000 | TOP4GS6/180 6.35 OR  | PCB terminal, TOP connection, Soldered connection, Clamping range, max.: 6 mm <sup>2</sup> , Pitch: 6.35 mm, No. of poles: 6, 180°, Box  |
| 1786240000 | TOP4GS7/180 6.35 OR  | PCB terminal, TOP connection, Soldered connection, Clamping range, max.: 6 mm <sup>2</sup> , Pitch: 6.35 mm, No. of poles: 7, 180°, Box  |
| 1786250000 | TOP4GS8/180 6.35 OR  | PCB terminal, TOP connection, Soldered connection, Clamping range, max.: 6 mm <sup>2</sup> , Pitch: 6.35 mm, No. of poles: 8, 180°, Box  |
| 1786260000 | TOP4GS9/180 6.35 OR  | PCB terminal, TOP connection, Soldered connection, Clamping range, max.: 6 mm <sup>2</sup> , Pitch: 6.35 mm, No. of poles: 9, 180°, Box  |
| 1786270000 | TOP4GS10/180 6.35 OR | PCB terminal, TOP connection, Soldered connection, Clamping range, max.: 6 mm <sup>2</sup> , Pitch: 6.35 mm, No. of poles: 10, 180°, Box |
| 1786280000 | TOP4GS11/180 6.35 OR | PCB terminal, TOP connection, Soldered connection, Clamping range, max.: 6 mm <sup>2</sup> , Pitch: 6.35 mm, No. of poles: 11, 180°, Box |

1786290000 TOP4GS12/180 6.35 OR

PCB terminal, TOP connection, Soldered connection, Clamping range, max.: 6 mm<sup>2</sup>, Pitch: 6.35 mm, No. of poles: 12, 180°, Box