

Excellent Integrated System Limited

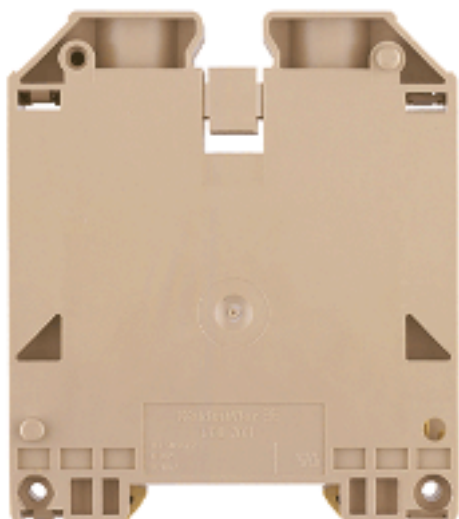
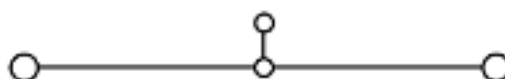
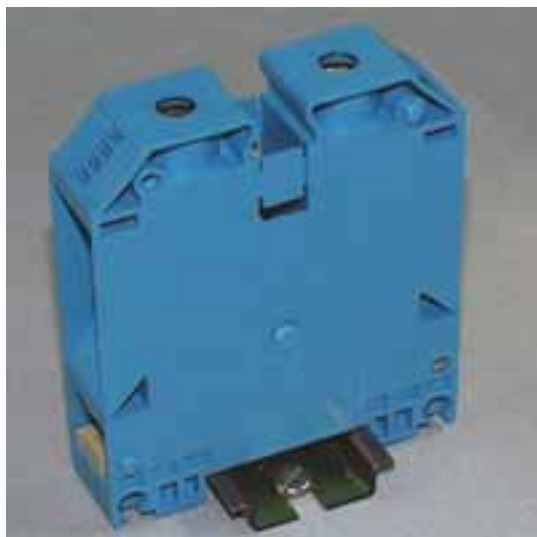
Stocking Distributor

Click to view price, real time Inventory, Delivery & Lifecycle Information:

[Weidmüller](#)
[9512420000](#)

For any questions, you can email us directly:

sales@integrated-circuit.com



General ordering data

Order No.	9512420000
Part designation	WDU 70N/35 BL
Version	Feed-through terminal, 70 mm ² , Screw connection, Wemid, blue, TS 35
EAN	4008190403973
Qty.	10 pc(s).

Product notes

Note, technical data	Copper straps can be used, possible connections: see online catalogue.
Product description	Their small size compared to the respective rated cross-section makes the modular terminals with the compact design very popular.
Note, accessories	Auxiliary connection for the additional conductor "WZAD 70N", order no. 1964830000 (up to 10 mm ² , 41 A)

PT OKIECEEx/ATEX rating data

EU-type examination certificate	KEMA98ATEX1683U
Download, German	KEMA98ATEX1683U_d.pdf
Download English	KEMA98ATEX1683U_e.pdf
IECEEx Certificate of Conformity	IECEXULD05.0008U
Download	IECEXULD05.0008U_e.pdf
ATEX voltage	690 V
ATEX current	167 A
ATEX conductor cross-section	70 mm ²
IECEEx voltage	690 V
IECEEx current	167 A
IECEEx conductor cross-section	70 mm ²
Voltage when using cross-connections	CrossConnectionGuide.pdf
Operating temperature range	For operating temperature range see EC Design Test Certificate / IEC Ex-Certificate of Conformity
Marking EN 60079-7	Ex e II
Marking ATEX Directive 94/9/EC	Ex II 2 G D

2 clampable conductors (H05V/H07V) with equal cross-section (rated connection)

Solid, min.	6 mm ²
Solid, max.	16 mm ²
Stranded, min.	10
Flexible, min.	10 mm ²
Flexible, max.	25 mm ²
Flexible with ferrule, min. (DIN 46228 pt 1)	6 mm ²
Flexible with ferrule, max. (DIN 46228 pt 1)	25

Additional technical data

Colour of insulating material	blue
Connection direction	on side
End plate required	No
Explosion-tested version "Ex e"	Yes
Installation advice	TS 35
Insulating material	Wemid
Levels cross-connected internally	No
No. of identical terminals	1
No. of levels	1
No. of terminal strips per level	2
Open sides	closed
Operating temperature range	- 50 °C, + 120 °C
Product family	W-Series
Type of connection	Screwed
Type of mounting	Snap-on
UL 94 flammability rating of insulation material	V-0
Version	Feed-through terminal

CSA rating data

Voltage (CSA)	600 V
CSA current	205 A
Min. cross-section (CSA)	AWG 8
Max. cross-section (CSA)	AWG 2/0

CSA rating data
Conductors for clamping (rated connection)

Clamping range, min.	10 mm ²
Clamping range, max.	95 mm ²
Type of connection	Screw connection
2nd type of connection	screwed
Connection direction	on side
No. of connections	2
Stripping length	22 mm
Clamping screw	M 8
Blade size	S6 (DIN 6911)
Tightening torque range	6.0...10 Nm
Gauge to IEC 60947-1	B11
Solid, min.	10 mm ²
Solid, max.	16 mm ²
Stranded, min.	10 mm ²
Stranded, max.	95 mm ²
Flexible, min.	10 mm ²
Flexible, max.	70 mm ²
Flexible with ferrule, min. (DIN 46228/1)	10 mm ²
Flexible with ferrule, max. (DIN 46228/1)	70 mm ²
Flexible, min., ferrule with plastic collar (DIN 46228 pt 4)	10 mm ²
Flexible, max., ferrule with plastic collar (DIN 46228 pt 4)	70 mm ²
AWG conductor size, min.	AWG 6
AWG conductor size, max.	AWG 2/0
AWG conductor size, min.	13.3 mm ²
AWG conductor size, max.	67.44 mm ²

Dimensions

Width	20.5 mm
Height of lowest version	86 mm
Length	75 mm
Weight	130.8 g
TS 35 offset	37.5 mm

Rating data

Rated cross-section	70 mm ²
Rated voltage	1,000 V
Rated impulse voltage	8 kV
Rated current	192 A
Standards	IEC 60947-7-1
Current with max. conductor	232 A
Pollution severity	3

Strap connection

Strap 1, max.	9 layers 9 x 0.8
Strap 1, min.	3 layers 9 x 0.8
Strap 2, max.	4 layers 16 x 0.8

UL rating data

Voltage (UL)	600 V
Current (UL)	175 A
Min. cross-section (UL)	AWG 6
Max. cross-section (UL)	AWG 3/0

Approvals

Approvals institutes



Classifications

ETIM 2.0	EC000897
ETIM 3.0	EC000897
eClass 4.1	27-14-11-20
eClass 5.0	27-14-11-20
eClass 5.1	27-14-11-20

Similar products

Order No.	Part designation	Version
9512190000	WDU 70N/35	Feed-through terminal, 70 mm ² , Screw connection, Wemid, dark beige, TS 35