

## Excellent Integrated System Limited

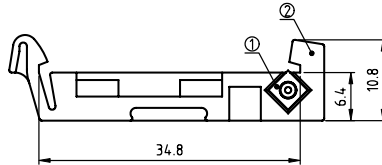
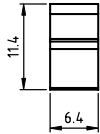
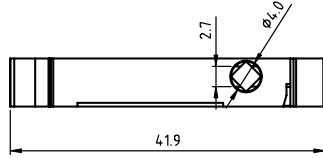
Stocking Distributor

Click to view price, real time Inventory, Delivery & Lifecycle Information:

[FCI](#)  
[AT00008000J0G](#)

For any questions, you can email us directly:  
[sales@integrated-circuit.com](mailto:sales@integrated-circuit.com)

PRODUCT NUMBER	PITCH
AT0000x000J0G	NA



**Material:**

- Item ① Fixed sheet: Stainless steel
- Item ② Terminal(housing): Thermoplastic (UL94V-0)

**Electrical**

- Retention force (match with NB series): 7.0Kgf

PART NO.: AT 00 00 x 0 00J0 G

- |   |                  |                 |
|---|------------------|-----------------|
| 0 | Black            | RoHS compliant  |
| 5 | Green(RAL6018/T) | (lead<4%)       |
| 6 | Blue (RAL5015/A) | In copper Alloy |
| 8 | Grey(RAL7035/D)  |                 |
| C | Green(RAL6018/U) |                 |

mat'l. code	surface ASME Y14.5	tolerance ASME Y14.5	projection	product family	TERMINAL BLOCK
ltr	ecn	no	dr	date	title
					TERMINAL BLOCK
					ACCESSORIES
					dwg no
					AT0000x000J0G
					sheet 1 of 1
					size
					A4
					type
					CUSTOMER Drawing
sheet index	revision sheet	A	1		