

Excellent Integrated System Limited

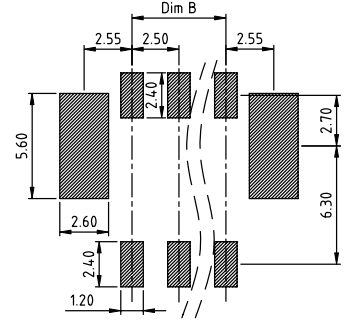
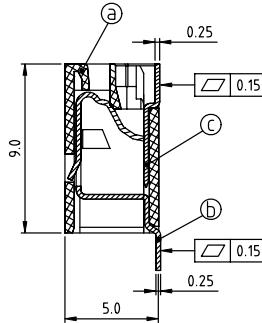
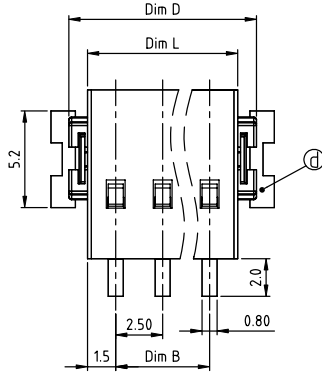
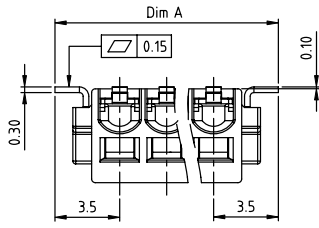
Stocking Distributor

Click to view price, real time Inventory, Delivery & Lifecycle Information:

[FCI](#)
[NQ02000000J0G](#)

For any questions, you can email us directly:
sales@integrated-circuit.com

PRODUCT NUMBER	PITCH
NQxx00x000JOG	250mm



RECOMMENDED P.C.B. LAYOUT
TOP VIEW

- Material:
- Item① Terminal housing: LCP (UL94V-0)
 - Item② Long solder pin: Copper alloy, Bright Tin plated
 - Item③ Short solder pin: Copper alloy, Bright Tin plated
 - Item④ Flange: Copper Alloy, Bright Tin plated

- Electrical
- | | |
|---|----------------|
| UL (UL1977) | cULus (UL1977) |
| ● Voltage rating: 300VAC | 300VAC |
| ● Current rating: 6A | 3A |
| ● Wire range: | |
| ● Solid wire (AWG): 20-26 | |
| ● Tin Dipped Stranded wire (AWG): 20-26 | |
| ● Wire strip length: 6-7mm | |
| ● Withstanding Voltage: 1.6KV | |
| ● Operating temperature: -45°C to +130°C | |
| ● Reflow soldering temperature: 260°C/10 Sec Max. | |
| ● Safety Approval: | UL cULus |

N=Number of poles

Dim L	(N-1) × 2.5+3.0
Dim A	(N-1) × 2.5+6.9
Dim B	(N-1) × 2.5
Dim D	(N-1) × 2.5+5.0

POLES	Dim L & B & D TOL	Dim A TOL
2P - 3P	-0.15/+0.15	-0.15/+0.30

PART NO.: NQ xx 00 x 000JOG

No. of poles
Solid block
02 2 poles
03 3 poles

color
0 Black (RAL 9005)
1 Natural color
8 Grey (RAL 7044)

RoHS compliant
(lead<4%)
In copper Alloy

mat'l. code	surface ASME Y14.5	tolerance ASME Y14.5	projection	product family	TERMINAL BLOCK
itr	ecn no	dr	date	title	
B	T-21471	HF	072015	TERMINAL BLOCK	
tolerances unless otherwise specified				SPRING CLAMP, 180D WIRE INLET, WITH FLANGE, SMT	
angles	X.±0.5		MM	dwg no	
X'±1'	X.X±0.3		scale	sheet 1 of 1	
	X.XX±0.1		FCI	NQxx00x000JOG	
dr	EVIN ZHONG	071714		size	
enr	EVIN ZHONG	071714		A4	
chr	HANKE FENG	071714		type	
appd	SHI JUN	071714		CUSTOMER Drawing	
sheet index	revision sheet	B	1		