



Distributor of FCI: Excellent Integrated System Limited

Datasheet of YK60219130J0G - Connector Barrier Block Strip 19 Circuit 0.394" (10.00mm)

Contact us: sales@integrated-circuit.com Website: www.integrated-circuit.com

Excellent Integrated System Limited

Stocking Distributor

Click to view price, real time Inventory, Delivery & Lifecycle Information:

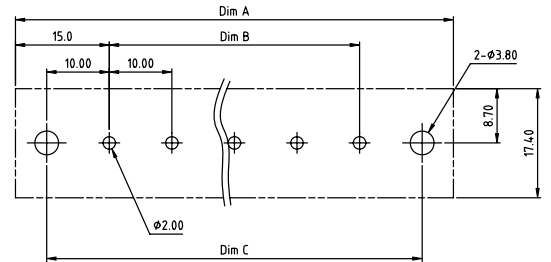
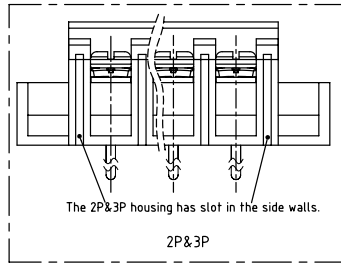
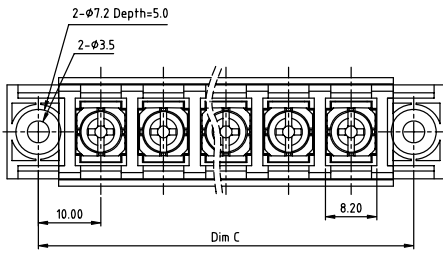
[FCI](#)

[YK60219130J0G](#)

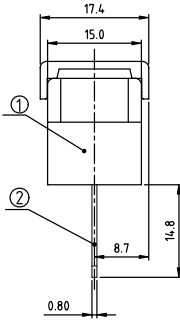
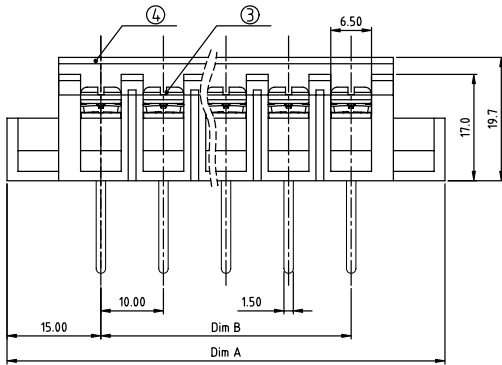
For any questions, you can email us directly:

sales@integrated-circuit.com

PRODUCT NUMBER	PITCH
YK602xx1x0J0G	10.00 mm



RECOMMENDED P.C.B LAYOUT
TOP VIEW



MATERIALS & ELECTRICAL
RATED VOLTAGE & CURRENT: 300 V, 20 A
WITHSTAND VOLTAGE: AC 2000 V/Min
INSULATION RESISTANCE: 1000 MΩ OR MORE AT DC 500 V
OPERATING TEMPERATURE RANG: -40 °C ~ +115 °C
SCREW TORQUE VALUE: 12 Lb-In.
WIRE RANGE: 22 - 12AWG
1) HOUSING: THERMOPLASTIC, UL 94 V-0 BLACK
2) TERMINAL: BRASS, 0.8t
3) TERMINAL SCREWS: STEEL, M3.5
4) COVER MATERIAL: PC
APPROVAL:

DIMENSION

Dim A	(N+2)×10.0
Dim C	(N+1)×10.0
Dim B	(N-1)×10.0

N=Number of poles

Poles	Tolerance
2p-4p	±0.20
5p-10p	±0.30
11p-24p	±0.40
25p-30p	±0.50

PART NO.: YK 602xx 1 x 0 JOG

No. of poles	Code
02 2 poles	0
03 3 poles	1
...	2
30 30 poles	3

Code	Terminal	Screw
0	G/F	G/F
1	G/F	Zinc
2	Tin	G/F
3	Tin	Zinc

RoHS compliant
(lead<4%)
In copper Alloy

mat'l. code	surface ASME Y14.5 ✓	tolerance ASME Y14.5	projection 	product family TERMINAL BLOCK
ltr	ecn no	dr	date	tolerances unless otherwise specified
				angles X±1°
				scale MM
	dr	EVAN LU	061414	 title TERMINAL BLOCK BARRIER TYPE, WITH FLANGE & COVER dwg no YK602xx1x0J0G type CUSTOMER Drawing
	enr	EVAN LU	061414	
	chr	HANKE FENG	061414	
	appd	SHI JUN	061414	
sheet index	revision sheet	A	1	