



## Excellent Integrated System Limited

Stocking Distributor

Click to view price, real time Inventory, Delivery & Lifecycle Information:

[Vector Electronics & Technology, Inc.](#)  
[E280-9U-3](#)

For any questions, you can email us directly:

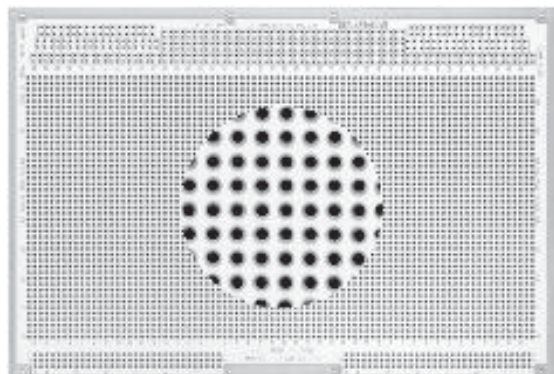
[sales@integrated-circuit.com](mailto:sales@integrated-circuit.com)

## VECTORBORD®

## Eurocard Prototyping Boards

## 6U

VMEbus



### E160-6U-3

### 6U X 160MM

**Circuit Pattern:**

**Width/Thick:**

**Height:**

**16-Pin DIP Capacity:**

**Material:**

**Wire-Wrap Terminals:**

**Wire-Wrap Socket Pins:**

**Rec. Card Cage:**

**96-Pin Din Connector:**

**Hole Diameter:**

Voltage/Ground Plane

6.30"/.062"

9.19"

105

FR4 Epoxy Glass

T44, T46, T49, T68

R50, R51, R52, R53

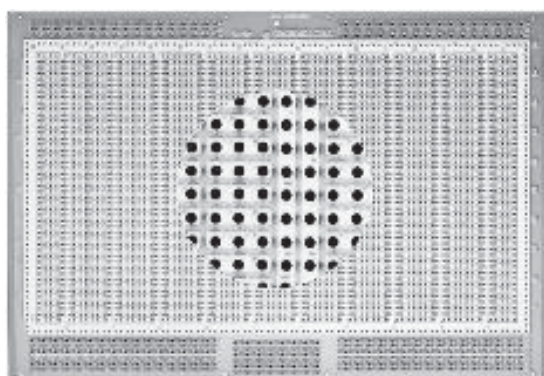
CCK160-6U

RE96MWR

(Available Separately)

.055"

- Overall voltage and ground planes on opposite board sides provide excellent shielding and power distribution
- To simulate plated-thru holes committed to voltage or ground planes, use Vector T123 eye lets, available separately ) for use without pins)
- Layout paper and instructions included
- Row and column legends provided



### 4615

### 6U X 160MM

**Circuit Pattern:**

**Width/Thick:**

**Height:**

**16-Pin DIP Capacity:**

**Material:**

**Wire-Wrap Terminals:**

**Wire-Wrap Socket Pins:**

**Rec. Card Cage:**

**96-Pin Din Connector:**

**Hole Diameter:**

3-Hole Solder Pad

6.30"/.062"

9.19"

50

FR4 Epoxy Glass

T44, T46, T49, T68

R32

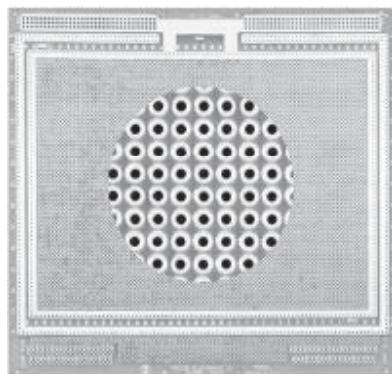
CCK160-6U

RE96MWR

(Available Separately)

.042"

- 3-hole solder pads (0.28" x 0.080") for interconnecting multiple component leads
- Bus and pad surfaces solder-coated for user convenience
- Interleaved buses on both sides, back-to-back
- Layout paper and instructions included
- Row and column legends provided



### E220-6U-1

### 6U X 220MM

**Circuit Pattern:**

**Width/Thick:**

**Height:**

**16-Pin DIP Capacity:**

**Material:**

**Wire-Wrap Terminals:**

**Wire-Wrap Socket Pins:**

**Rec. Card Cage:**

**96-Pin Din Connector:**

**Hole Diameter:**

Pad-per-hole

8.66"/0.62"

9.19"

140

FR4 Epoxy Glass

T44, T46, T49, T68

R32

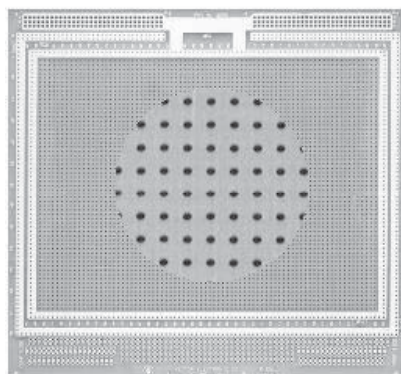
CCK220-6U

RE96MWR

(Available Separately)

.042"

- Plated-thru holes
- Voltage and ground buses around board perimeter both sides
- Pad and Bus surfaces solder-coated for user convenience
- Also accepts PGA's and PLCC's
- Layout paper and instructions included
- Row and column legends provided



### E220-6U-2

### 6U X 220MM

**Circuit Pattern:**

**Width/Thick:**

**Height:**

**16-Pin DIP Capacity:**

**Material:**

**Wire-Wrap Terminals:**

**Wire-Wrap Socket Pins:**

**Rec. Card Cage:**

**96-Pin Din Connector:**

**Hole Diameter:**

Peripheral Buses

8.66"/.062"

9.19"

140

FR4 Epoxy Glass

T44, T46, T49, T68

R32

CCK220-6U

RE96MWR

(Available Separately)

.042"

- Voltage and ground buses around board perimeter both sides
- Bus surfaces solder-coated for user convenience
- Also accepts PGA's and PLCC's
- 58 x 78 grid unrestricted component placement area
- Layout paper and instructions included
- Row and column legends provided

6U

Eurocard Prototyping Boards

VECTORBORD®

## E220-6U-3

## 6U X 220MM

**Circuit Pattern:**

**Width/Thick:**

**Height:**

**16-Pin DIP Capacity:**

**Material:**

**Wire-Wrap Terminals:**

**Wire-Wrap Socket Pins:**

**Rec. Card Cage:**

**96-Pin Din Connector:**

**Hole Diameter:**

Voltage/Ground plane

8.66"/.062"

9.19"

168

FR4 Epoxy Glass

T44, T46, T49, T68

R50, R51, R52, R53

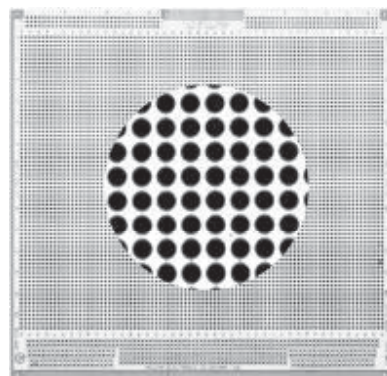
CCK220-6U

RE96MWR

(Available Separately)

.055"

- Overall voltage and ground planes on opposite board sides provide excellent shielding and power distribution
- Plane surfaces solder-coated for user convenience
- To simulate plated-thru holes committed to voltage or ground planes, use Vector T123 eyelets, available separately (for use without pins)
- Layout paper and instructions included



9U

## E280-9U-1

## 9U X 280MM

**Hole Diameter:**

.042"

**Circuit Pattern:**

Pad-Per-Hole

**Width/Thick:**

11.02"/.062"

**Height:**

14.44"

**16-Pin DIP Capacity:**

270

**Material:**

FR4 Epoxy Glass

**Wire-Wrap Terminals:**

T44, T46, T49, T68

**Wire-Wrap Socket Pins:**

R32

**Rec. Card Cage:**

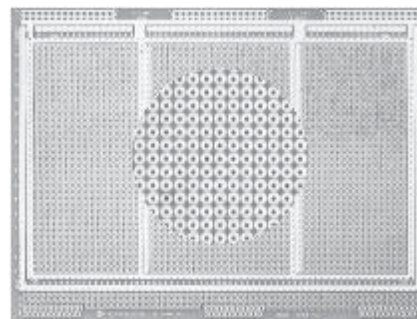
CCK280-9U

**96-Pin Din Connector:**

RE96MWR

(Available Separately)

- Voltage and ground buses around board perimeter both sides
- Accepts PGA and PLCC devices
- Additional power and ground buses in signal area
- Layout paper and instructions included
- Row and column legends provided
- Plated-thru holes



## E280-9U-2

## 9U X 280MM

**Circuit Pattern:**

Peripheral Buses

**Width/Thick:**

11.02/.062"

**Height:**

14.44"

**16-Pin DIP Capacity:**

270

**Material:**

FR4 Epoxy Glass

**Wire-Wrap Terminals:**

T44, T46, T49, T68

**Wire-Wrap Socket Pins:**

R32

**Rec. Card Cage:**

CCK280-9U

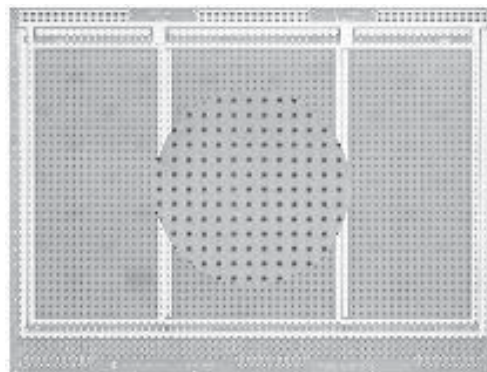
**96-Pin Din Connector:**

RE96MWR

**Hole Diameter:**

.042"

- Voltage and ground buses around board perimeter both sides
- Bus surfaces solder-coated for user convenience
- Capacity for mounting 270, 16-pin DIP IC devices; also accepts PGA and PLCC devices
- Additional power and ground buses in signal area
- Three 79 x 36 grid unrestricted component placement areas
- Layout paper and instructions included
- Row and column legends provided



## E280-9U-3

## 9U X 280MM

**Circuit Pattern:**

Voltage/Ground Plane

**Width/Thick:**

11.02/.062"

**Height:**

14.44"

**16-Pin DIP Capacity:**

348

**Material:**

FR4 Epoxy Glass

**Wire-Wrap Terminals:**

T44, T46, T49, T68

**Wire-Wrap Socket Pins:**

R50, R51, R52, R53

**Rec. Card Cage:**

CCK280-9U

**96-Pin Din Connector:**

RE96MWR

**Hole Diameter:**

.055"

- Overall voltage and ground planes on opposite board sides provide excellent shielding and power distribution
- Additional power and ground buses in signal area
- To simulate plated-thru holes committed to voltage or ground planes, use Vector T123 eyelets, available separately (for use without pins)
- Layout paper and instructions included
- Row and column legends provided

