

Excellent Integrated System Limited

Stocking Distributor

Click to view price, real time Inventory, Delivery & Lifecycle Information:

[Amphenol RE](#)
[SMP-FSBA-696](#)

For any questions, you can email us directly:
sales@integrated-circuit.com

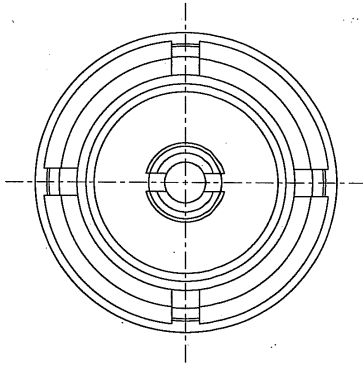
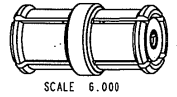


- INOTES:
- MATERIALS AND FINISHES:
 BODY - BeCu, GOLD PLATING
 CONTACT - BeCu, GOLD PLATING
 INSULATOR - PTFE
 - ELECTRICAL:
 A. IMPEDANCE: 50 OHM
 B. FREQUENCY RANGE: DC - 26.5 GHz
 C. VSWR(RETURN LOSS): 1.2 (20.8 dB), MAX. DC-10GHz
 1.4 (15.6 dB), MAX. 10-18GHz
 1.5 (14 dB), MAX. 18-26.5GHz
 D. DIELECTRIC WITHSTANDING VOLTAGE: 500 VRMS, MIN.
 - PHYSICAL:
 A. DURABILITY: 100 CYCLES MIN.
 B. ENGAGEMENT FORCE: 15 LB (67 N) MAX (FOR FULL DETENT)
 C. DISINGAGEMENT FORCE: 2 LB (9 N) MIN (FOR FULL DETENT)
 E. TEMPERATURE RANGE: -65° C TO 165° C

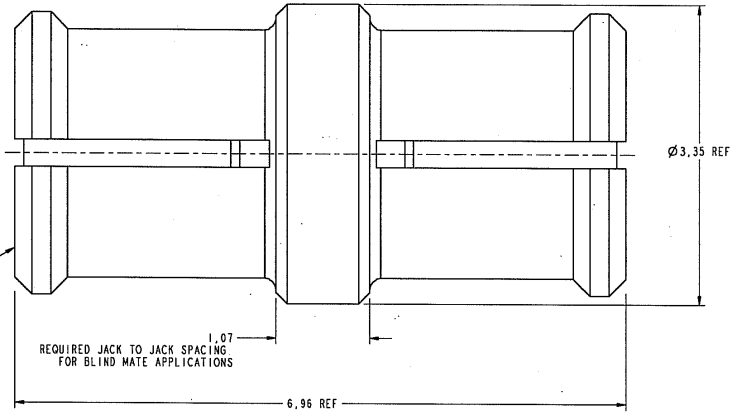
THIRD ANGLE PROJ.

REVISIONS

REV	DESCRIPTION	DATE	ECO	APPR
A	RELEASE TO MFG	06-Jun-07		KL



INTERFACE PER
 MIL-STD-348
 SERIES SMP
 (BOTH SIDES)



CUSTOMER OUTLINE DRAWING
 ALL OTHER SHEETS ARE FOR INTERNAL USE ONLY

UNLESS OTHERWISE SPECIFIED, DIMENSIONS ARE IN METRIC AND TOLERANCES ARE: 0.5 - 6mm ±0.1mm 6 - 30mm ±0.2mm 30 - 120mm ±0.3mm ANGLES ±1°	MATERIAL	DRAWN <i>Evan</i> DATE 06-Jun-07 ENGINEER <i>Cisy</i> DATE 06-Jun-07	TITLE		Amphenol RF Danbury CT USA, Taiwan, Taiwan, Shenzhen, China www.amphenolrf.com		
	NOTICE - These drawings, specifications, or other data (1) are, and remain the property of Amphenol Corp. (2) must be returned upon request; and (3) are confidential and not to be disclosed to any person other than those to whom they are given by Amphenol Corp. the furnishing of these drawings, specifications, or other data by Amphenol Corp., or to any other person for any purpose is not to be regarded by implication or otherwise in any manner licensing, granting rights to permitting such holder or any other person to manufacture, use or sell any product, process or design, patented or otherwise, that may in any way be related to or disclosed by said drawings, specifications, or other data.	REFERENCE EAR 8 2279 AND 615X-2322-100 CONFIGURATION LEVEL: Engineering Change	APPROVED <i>[Signature]</i> DATE 15 Jun-07 CAD FILE	SMP BULLET PLUG F-F		DRAWING NO. SMP-FSBA-696	
	FINISH	1:\SMP\SMP-FSBA-696	SCALE: 25.0:1.0	SHEET 2 OF 2		ITEM NO. SMP-FSBA-696 PART NO. SMP-FSBA-696	
			DWG SIZE B	CODE ID 74868		REV A	