

Excellent Integrated System Limited

Stocking Distributor

Click to view price, real time Inventory, Delivery & Lifecycle Information:

[Fluke Electronics](#)

[FLK-TI200 60HZ](#)

For any questions, you can email us directly:

sales@integrated-circuit.com

FLUKE®

Ti400, Ti300 and Ti200 Infrared Cameras with LaserSharp® Auto Focus

Get accurate readings and consistently in-focus images

Technical Data



Now compatible with Fluke Connect™ Mobile App

Fluke Infrared Cameras Experience. Performance. Confidence.

Quickly capture an in-focus image with the pull of a trigger and wirelessly share measurements with your team anytime, anywhere with the **Fluke Connect™ ShareLive™ video call**.

- Quickly **get accurate readings and in-focus images** with **LaserSharp® Auto Focus**
- **Save Reporting Time.** Make better decisions faster than before. Organize your measurements by asset in one location with EquipmentLog™ history.
- **Brilliantly detailed quality images.** Pixel for pixel the best spatial resolution available.¹
- **Precisely blended visual and infrared images** with crucial details to assist in identifying potential problems—IR-Fusion® technology with AutoBlend™ mode
- **Standard and radiometric video recording and video streaming²**
- **Text and voice recording/annotation** allows you to save additional details to image files
- **Extensive memory options**—Removable micro SD memory card, on-board flash memory, save-to-USB capability, direct download via USB-to-PC connection

¹ Comparison is based on competitive cameras with the same detector resolution.

² Firmware updates for these features are not available yet in all countries. Users notified via SmartView.

SUPERIOR IMAGE QUALITY

SPATIAL RESOLUTION

Ti400
1.31 mRad

Ti300
1.75 mRad

Ti200
2.09 mRad

RESOLUTION

Ti400
320x240 (76,800 pixels)

Ti300
240x180 (43,200 pixels)

Ti200
200x150 (30,000 pixels)

FIELD OF VIEW

Ti400, Ti300, Ti200
24 °H x 17 °V

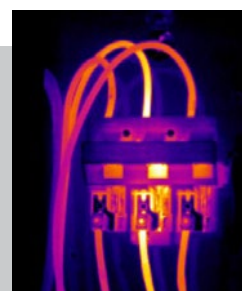
IR-Fusion® Technology with AutoBlend™ Mode



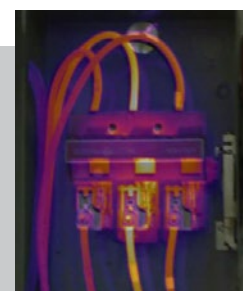
Precisely blended visual and infrared images with crucial details to assist in identifying potential problems.



Three-phase Full Visible



Three-phase Full Infrared



Three-phase AutoBlend Mode

Detailed specifications

FLUKE®

	Ti400	Ti300	Ti200
Key features			
IFOV with standard lens (spatial resolution)	1.31 mRad	1.75 mRad	2.09 mRad
Resolution	320x240 (76,800 pixels)	240X180 (43,200 pixels)	200X150 (30,000 pixels)
Field of view	24 °H x 17 °V		
Minimum focus distance	15 cm (approx. 6 in)		
IFOV with optional telephoto lens	0.65 mRad	0.87 mRad	1.05 mRad
Field of view	12 °H x 9 °V		
Minimum focus distance	45 cm (approx. 18 in)		
IFOV with optional wide-angle lens	2.62 mRad	3.49 mRad	4.19 mRad
Field of view	46 °H x 34 °V		
Minimum focus distance	15 cm (approx. 6 in)		
LaserSharp® Auto Focus	Yes, for consistently in-focus images. Every. Single. Time.		
Advanced manual focus	Yes		
Wireless connectivity	Yes, to PC, iPhone® and iPad® (iOS 4s and later), Android™ 4.3 and up, and WiFi to LAN*		
Fluke Connect™ App compatible*	Yes* (where available)		
CNX™ Wireless System*	Yes* (where available)		
IR-Fusion® technology	Yes		
AutoBlend™ mode	Yes		
Picture-In-Picture (PIP)	Yes		
Ruggedized touchscreen display (Capacitive)	8.9 cm (3.5 in) diagonal landscape color VGA (640 x 480) LCD with backlight		
Rugged, ergonomic design for one-handed use	Yes		
Thermal sensitivity (NETD)	≤ 0.05 °C at 30 °C target temp (50 mK)		≤ 0.075 °C at 30 °C target temp (75 mK)
Temperature measurement range (not calibrated below -10 °C)	-20 °C to +1200 °C (-4 °F to +2192 °F)	-20 °C to +650 °C (-4 °F to +1202 °F)	
Level and span	Smooth auto and manual scaling		
Fast auto toggle between manual and auto modes	Yes		
Fast auto-rescale in manual mode	Yes		
Minimum span (in manual mode)	2.0 °C (3.6 °F)		
Minimum span (in auto mode)	3.0 °C (5.4 °F)		
Built-in digital camera (visible light)	5 megapixel industrial performance		
Frame rate	9 Hz or 60 Hz versions		
Laser pointer	Yes		
Torch	Yes		
Data storage and image capture			
Extensive memory options	Removable micro SD memory card, on-board flash memory, save-to-USB capability, direct download via USB-to-PC connection		
Image capture, review, save mechanism	One-handed image capture, review, and save capability		
File formats	Non-radiometric (.bmp) or (.jpeg) or fully-radiometric (.is2); No analysis software required for non-radiometric (.bmp, .jpg and .avi*) files		
Memory review	Thumbnail view navigation and review selection		
Software	SmartView® software, Fluke Connect™, and SmartView® Mobile App—full analysis and reporting software		
Export file formats with SmartView® software	BMP, DIB, GIF, JPE, JFIF, JPEG, JPG, PNG, TIF, and TIFF		
Voice annotation	60 seconds maximum recording time per image; reviewable playback on camera		
IR-PhotoNotes™	Yes		
Text annotation*	Yes		
Video recording*	Standard and Radiometric		
Streaming video	Via USB to PC and HDMI to HDMI compatible screen		
File formats video*	Non-radiometric (MPEG - encoded .AVI) and fully-radiometric (.IS3)*		
Auto capture (temperature and interval)*	Yes*		
Remote control and operation (for special and advanced applications)	Yes	—	

Detailed specifications

FLUKE®

	Ti400	Ti300	Ti200
Battery			
Batteries (field-replaceable, rechargeable)	Two lithium ion smart battery packs with five-segment LED display to show charge level		
Battery life	Four+ hours continuous use per battery pack (assumes 50 % brightness of LCD and average usage)		
Battery charge time	2.5 hours to full charge		
AC battery charging system	Two-bay AC battery charger (110 V AC to 220 V AC, 50/60 Hz) (included), or in-imager charging. AC mains adapters included in 9 Hz versions. Optional 12 V automotive charging adapter.		
AC operation	AC operation with included power supply (110 V AC to 220 V AC, 50/60 Hz). AC mains adapters included.		
Power saving	User selectable sleep and power off modes		
Temperature measurement			
Accuracy	± 2 °C or 2 % (at 25 °C nominal, whichever is greater)		
On-screen emissivity correction	Yes (both number and table)		
On-screen reflected background temperature compensation	Yes		
On-screen transmission correction	Yes		
Color Palettes			
Standard Palettes	8: Ironbow, Blue-Red, High Contrast, Amber, Amber Inverted, Hot Metal, Grayscale, Grayscale Inverted		
Ultra Contrast™ Palettes	8: Ironbow Ultra, Blue-Red Ultra, High Contrast Ultra, Amber Ultra, Amber Inverted Ultra, Hot Metal Ultra, Grayscale Ultra, Grayscale Inverted Ultra		
General specifications			
Color alarms (temperature alarms)	High-temperature , low-temperature, and isotherm		
Infrared spectral band	7.5 µm to 14 µm (long wave)		
Operating temperature	-10 °C to +50 °C (14 °F to 122 °F)		
Storage temperature	-20 °C to +50 °C (-4 °F to 122 °F) without batteries		
Relative humidity	10% to 95 % non-condensing		
Center-point temperature measurement	Yes		
Spot markers	User selectable hot spot and cold spot markers, 3 user definable spot markers on camera and in Smartview® software		
Center box (MIN-MAX-AVG)	Expandable-contractable measurement box with MIN-MAX-AVG temp		
Safety standards	UL 61010-1:2012 CAN/CSA-C22.2 No.61010-1-12 IEC 61010-1 3rd Edition (2010)		
Electromagnetic compatibility	EN 61326-1:2006 IEC 61326-1:2005		
C Tick	IEC/EN 61326-1		
US FCC	CFR 47, Part 15 Subpart B Class B		
Vibration	0.03 g2/Hz (3.8 grms), 2.5g IEC 68-2-6		
Shock	25 g, IEC 68-2-29		
Drop	Engineered to withstand 2 meter (6.5 feet) drop with standard lens		
Size (H x W x L)	27.7 cm x 12.2 cm x 16.7 cm (10.9 in x 4.8 in x 6.5 in)		
Weight (battery included)	1.04 Kg (2.3 lb)		
Enclosure rating	IP54 (protected against dust, limited ingress; protection against water spray from all directions)		
Warranty	Two-years (standard), extended warranties are available.		
Recommended calibration cycle	Two-years (assumes normal operation and normal aging)		
Supported languages	Czech, Dutch, English, Finnish, French, German, Hungarian, Italian, Japanese, Korean, Polish, Portuguese, Russian, Simplified Chinese, Spanish, Swedish, Traditional Chinese, and Turkish		
* Firmware updates for these features are not available yet in all countries. Users notified via SmartView® software when available.			

Ordering information

FLK-Ti400 9Hz Thermal Imager, 9 Hz

FLK-Ti400 60Hz Thermal Imager, 60 Hz

FLK-Ti300 9Hz Thermal Imager, 9 Hz

FLK-Ti300 60Hz Thermal Imager, 60 Hz

FLK-Ti200 9Hz Thermal Imager, 9 Hz

FLK-Ti200 60Hz Thermal Imager, 60 Hz

Included

Thermal imager with standard infrared lens; ac power supply and battery pack charger (including main adapters); two, rugged lithium ion smart battery packs; USB cable; HDMI video cable; SmartView® software available via free download; rugged, hard carrying case; soft transport bag; adjustable hand strap; warranty registration card.

Optional accessories

FLK-LENS/TELE2 Infrared Telephoto Lens (2X magnification)

FLK-LENS/WIDE2 Infrared Wide Angle Lens

TI-CAR-CHARGER Car Charger

FLK-TI-VISOR3 Sun Visor

BOOK-ITP Introduction to Thermography Principles Book

TI-TRIPOD3 Tripod Mounting Accessory

FLK-Ti-SBP3 Additional Smart Battery

FLK-Ti-SBC3 Additional Smart Battery Charger

Kits

FLK-Ti400 60HZ/FCA* Thermal Imager, 3000 FC DMM, a3001FC iFlex Module

FLK-Ti300 60HZ/FCA* Thermal Imager, 3000 FC DMM, a3001FC iFlex Module

FLK-Ti200 60HZ/FCA* Thermal Imager, 3000 FC DMM, a3001FC iFlex Module

FLK-Ti400 60HZ/FCC* Thermal Imager, 3-a3001FC iFlex Modules, 805 Vibration Tester

FLK-Ti400 9HZ/FCA Thermal Imager, 3000 FC DMM, a3001FC iFlex Module

FLK-Ti300 9HZ/FCA Thermal Imager, 3000 FC DMM, a3001FC iFlex Module

FLK-Ti200 9HZ/FCA Thermal Imager, 3000 FC DMM, a3001FC iFlex Module

FLK-Ti400 9HZ/FCC Thermal Imager, 3-a3001FC iFlex Modules, 805 Vibration Tester

Visit the Fluke website to get complete details on these products or kits or ask your local Fluke sales representative.

***Only available in certain countries.**

RF connection time (binding time) may take up to 1 minute.

FLUKE®



Built with
**FLUKE
CONNECT™**

See it. Save it. Share it.
All the facts, right in the field.

Fluke Connect with ShareLive™ is the only wireless measurement system that lets you stay in contact with your entire team without leaving the field. The Fluke Connect mobile app is available for Android™ (4.3 and up) and iOS (4s and later) and works with over 20 different Fluke products—the largest system of connected test tools in the world. And more are on the way. Go to the Fluke website to find out more.

Download the app at:



Smart phone not included with purchase.



All trademarks are the property of their respective owners. Smart phone, wireless service, and data plan not included with purchase. The first 5GB of storage is free. Compatible with Android™ (4.3 and up) and iOS (4s and later). Apple and the Apple logo are trademarks of Apple Inc., registered in the U.S. and other countries. App Store is a service mark of Apple Inc. Google Play is a trademark of Google Inc.

**Fluke. Keeping your world
up and running.®**

Fluke Corporation
PO Box 9090, Everett, WA 98206 U.S.A.

Fluke Europe B.V.
PO Box 1186, 5602 BD
Eindhoven, The Netherlands

Modification of this document is not
permitted without written permission
from Fluke Corporation.

For more information call:
In the U.S.A. (800) 443-5853 or
Fax (425) 446-5116
In Europe/M-East/Africa +31 (0)40 267 5100 or
Fax +31 (0)40 267 5222
In Canada (800)-36-FLUKE or
Fax (905) 890-6866
From other countries +1 (425) 446-5500 or
Fax +1 (425) 446-5116
Web access: <http://www.fluke.com>

©2014 Fluke Corporation.
Specifications subject to change without notice.
6/2014 6002304d-en