



LED DRIVER CATALOG

Quality, Efficiency, Longevity and Cost-Competitiveness



& POWER ACCESSORIES



SSL Solutions Faster Than The Speed Of Light®

LED Driver Essentials	Page 3	75 Watt LED Drivers	Pages 20-21
6 Watt LED Drivers	Page 4	75 Watt-T5 LED Drivers	Pages 20-21
9 Watt LED Drivers	Page 4	96 Watt-LT LED Drivers	Page 21-23
12 Watt LED Drivers	Page 4	96 Watt LED Drivers	Page 21-23
17 Watt LED Drivers	Page 5	100 Watt LED Drivers	Page 23
20 Watt LED Drivers	Pages 5-6	120 Watt LED Drivers	Pages 23-25
25 Watt LED Drivers	Pages 7-10	150 Watt LED Drivers	Pages 25-27
30 Watt LED Drivers	Page 11	152 Watt LED Drivers	Page 28
35 Watt LED Drivers	Page 11-12	200 Watt LED Drivers	Pages 28-30
39 Watt LED Drivers	Page 12	250 Watt LED Drivers	Page 30
40 Watt LED Drivers	Pages 12-17	300 Watt LED Drivers	Page 30
50 Watt LED Drivers	Page 18	Surge Protectors	Page 31
55 Watt LED Drivers	Page 18	Step-dimming Modules & Transformers	Page 31
60 Watt LED Drivers	Page 19		

THOMAS RESEARCH PRODUCTS LIMITED WARRANTY

Thomas Research Products warrants to the Purchaser that its LED drivers, surge protectors, and lighting transformers will be free from defects in material and workmanship and will be of the designated kind and quality for five years from the date of manufacture. (EXCEPT: BLED Drivers, which are two years.) All other electronic circuits will be free from defects in material and workmanship and will be of the designated kind and quality for one year from the date of manufacture.

This warranty is not applicable to any circuit not installed and operated in accordance with the current edition of National Electrical Code and Underwriters Laboratories, Inc. Standards for Safety.

If it appears within our circuit warranty period that any circuit does not meet the warranty specified above, the Purchaser must notify in writing by United States mail of its warranty claim and return the circuits promptly at Purchaser's expense to Thomas Research Products. Thomas Research Products shall thereupon at Thomas Research Products expense, make available a repaired or new replacement part.

NO IMPLIED STATUTORY WARRANTY OR IMPLIED STATUTORY WARRANTY OF MERCHANTABILITY OR FITNESS FOR A PARTICULAR PURPOSE SHALL APPLY BEYOND THE AFOREMENTIONED CIRCUIT WARRANTY PERIOD. SOME STATES DO NOT ALLOW LIMITATIONS ON HOW LONG AN IMPLIED WARRANTY LASTS, SO THE ABOVE LIMITATION MAY NOT APPLY TO YOU.

The foregoing warranty is exclusive of all other statutory, written or oral warranties and no other warranties of any kind, statutory or otherwise, are given or herein expressed.

LIMITATIONS OF LIABILITY

UNDER NO CIRCUMSTANCES, WHETHER AS A RESULT OF BREACH OF CONTRACT, BREACH OF WARRANTY, TORT, STRICT LIABILITY OR OTHERWISE WILL THOMAS RESEARCH PRODUCTS BE LIABLE FOR CONSEQUENTIAL, INCIDENTAL, SPECIAL OR EXEMPLARY DAMAGES, INCLUDING, BUT NOT LIMITED TO, LOSS OF PROPERTIES, LOSS OF USE OR DAMAGE TO ANY PROPERTY OR EQUIPMENT, COST OF CAPITAL, COST OF SUBSTITUTE PRODUCTS, FACILITIES OR SERVICES, DOWNTIME COSTS OR CLAIMS OF PURCHASER'S CUSTOMERS. SOME STATES DO NOT ALLOW THE EXCLUSION OR LIMITATION OF INCIDENTAL OR CONSEQUENTIAL DAMAGES, SO THE ABOVE LIMITATION OR EXCLUSION MAY NOT APPLY TO YOU.

THOMAS RESEARCH PRODUCTS LIABILITY ON ALL CLAIMS OF ANY KIND FOR ANY LOSS OR DAMAGE ARISING OUT OF, RESULTING FROM OR CONCERNING ANY ASPECT OF THIS AGREEMENT OR FROM THE PRODUCTS OR SERVICES FURNISHED HEREUNDER SHALL NOT EXCEED THE PRICE OF THE SPECIFIC PRODUCT WHICH GIVES RISE TO THE CLAIM, EXCEPT IN ACCORDANCE WITH THOMAS RESEARCH PRODUCTS TECHNICAL ENGINEERING SERVICE PROGRAM.

THIS WARRANTY GIVES YOU SPECIFIC LEGAL RIGHTS AND YOU MAY ALSO HAVE OTHER RIGHTS WHICH VARY FROM STATE TO STATE.

LED DRIVER ESSENTIALS

How Do I Choose The Proper LED Driver For My Application?

- Identify whether a constant-current or constant-voltage source is required to operate your LEDs application
- Identify the number of LEDs used in your application
 - Voltage required is determined by the number of LEDs in series string
 - Current required is determined by number of parallel individual LEDs or strings
- Identify the maximum wattage load the driver will encounter in your application
 - Choose a driver rated slightly higher than your maximum rated load
 - Make sure the driver's output will operate within its specified range (voltage range for a constant-current driver, or current range for a constant-voltage driver)
- Identify any dimming needs
- Choose a driver from a manufacturer with US operations (sales and engineering support is just a phone call away), who can also supply your manufacturing locations worldwide

- For complete product details, see our individual data sheets
- For information on choosing the right LED driver, see our website FAQ page
- For more dimming information see our website FAQ page



Features Of LED Drivers From TRP

Long-life LED Drivers from Thomas Research Products represent the latest available technology. Most LED Drivers from TRP feature:

- **TRUE** 277V input: Universal 120-277V Nom. (90-305V Min/Max), TSC/TSV and -HV Series feature 277-480V Nom. Input, 50/60Hz
- UL Recognized in both the US & Canada, many also CE certified
- UL1310, Class 2 compliant or UL8540 as appropriate
- RoHS compliant
- IP66 compliant, suitable for damp or dry locations (*Note: BLED series is IP64 compliant*)
- Output protection: over-voltage, over-current and short-circuit
- Compact, lightweight UV-rated plastic or aluminum case.
- Many feature **Black Magic Thermally Advantage™** housings
- **Must typically be loaded to a minimum of 50% of their rated max power output (wattage) to ensure proper operation**
- Power factor ≥ 0.90 (Active Power Factor Correction)
- Minimum Operating Temperature -20°C or lower
- Operating Frequency ≥ 120 Hz
- Meets FCC CFR Part 15 Part B emission limits
- Complies with IEEE C.62.41.1-2002 and C.62.41.2-2002 transient protection requirements
- Class A sound rating
- Standard 5-year warranty, exceeding the Energy Star 3 year warranty requirement (*Note: BLED series have 2-year warranty*)
- Max driver temperatures vary. *See product details.*



LED DRIVER PRODUCT FAMILIES

PERFORMANCE DRIVERS:

PLED Series	75W- 200W	High performance, Small case, dim to <10%
-------------	-----------	---

STANDARD DRIVERS:

LED Series	12W-100W	Long life, 2-wire dimming, Dim to 10%
LEG Series	75W-150W	F-Can style enclosures, Dim to 10%

BUDGET & VALUE DRIVERS:

BLED Series	12W-35W	Low cost, small footprint, No dimming
TRV Series	250W-300W	Long life constant voltage

SPECIALTY DRIVERS:

-HL Series	25W, 40W	Bottom-exit lead options, Hazardous location
-LE/TE/LT Series	20W, 25W, 40W	Line voltage dimming
-PR Series	39W, 55W	Programmable output
LDC Series	25W	DC input
LEDDC Series	25W, 60W	DC or AC input
PLEDDC Series	120W-200W	DC or AC input
TSC/TSV/-HV Series	75W- 300W	277-480V (TSC/TSV) or 347-480V input (-HV)
TRC-Q Series	152W	4 Channel output

SPECIAL MODELS AVAILABLE

- HV versions for High Voltage (480V) Applications
- HL versions for UL Class1, Div. 2 Hazardous Locations
- LT versions for Line Voltage Dimming Applications
- Sign Component (SAM) Manual Listed (see SAM checkbox)

6W



LED-LT Series

- Line Voltage Dimming
- Compact Black Plastic Case
- OA: 3.35" x 1.42" x 0.9"



Constant Current or Voltage	Dimming	Output Current (mA) <i>(range if CV)</i>	Output Voltage (VDC) <i>(range if CC)</i>	Catalog Number	Nominal Input Voltage (Vac)	Max Output Power (Watts)	Efficiency	In Stock (typical)	SAM
C	Triac For Leading Edge (Incandescent) dimmers & ELV For Trailing Edge (Electronic Low Voltage) dimmers	170	22-36	LED06W120-036-C0170-LT	120	6	82%		
		200	18-30	LED06W120-030-C0200-LT			82%		
		220	17-28	LED06W120-028-C0220-LT			81%	●	
		350	12-20	LED06W120-020-C0350-LT			81%		
		450	8-14	LED06W120-014-C0450-LT			80%		
		500	7-12	LED06W120-012-C0500-LT			80%		
		170	22-36	LED06W230-036-C0170-LT	230	6	82%		
		200	18-30	LED06W230-030-C0200-LT			82%		
		220	17-28	LED06W230-028-C0220-LT			81%		
		350	12-20	LED06W230-020-C0350-LT			81%		
		450	8-14	LED06W230-014-C0450-LT			80%		
		500	7-12	LED06W230-012-C0500-LT			80%		

9W



LED-LT Series

- Line Voltage Dimming
- Compact Black Plastic Case
- OA: 3.35" x 1.42" x 0.9"



Constant Current or Voltage	Dimming	Output Current (mA) <i>(range if CV)</i>	Output Voltage (VDC) <i>(range if CC)</i>	Catalog Number	Nominal Input Voltage (Vac)	Max Output Power (Watts)	Efficiency	In Stock (typical)	SAM
C	Triac For Leading Edge (Incandescent) dimmers & ELV For Trailing Edge (Electronic Low Voltage) dimmers	250	22-36	LED09W120-036-C0250-LT	120	9	85%		
		300	18-30	LED09W120-030-C0300-LT			85%		
		350	17-28	LED09W120-028-C0350-LT			84%	●	
		450	12-20	LED09W120-020-C0450-LT			84%		
		700	8-14	LED09W120-014-C0700-LT			83%	●	
		750	7-12	LED09W120-012-C0750-LT			83%		
		250	22-36	LED09W230-036-C0250-LT	230	9	85%		
		300	18-30	LED09W230-030-C0300-LT			85%		
		350	17-28	LED09W230-028-C0350-LT			84%		
		450	12-20	LED09W230-020-C0450-LT			84%		
		700	8-14	LED09W230-014-C0700-LT			83%		
		750	7-12	LED09W230-012-C0750-LT			83%		

12W



Budget BLED Series

- Compact Black Plastic Case
- OA: 3.0" x 1.23" x 0.98"

Constant Current or Voltage	Dimming	Output Current (mA) <i>(range if CV)</i>	Output Voltage (VDC) <i>(range if CC)</i>	Catalog Number	Nominal Input Voltage (Vac)	Max Output Power (Watts)	Efficiency	In Stock (typical)	SAM
C	No	80	90-150	BLED12W-150-C0080	100-277	12	89%		
		120	60-100	BLED12W-100-C0120		12	89%		
		250	28-48	BLED12W-048-C0250		12	88%		
		280	26-43	BLED12W-043-C0280		12	87%		
		350	21-36	BLED12W-036-C0350		12.6	86%		
		500	15-24	BLED12W-024-C0500		12	85%		
		660	11-18	BLED12W-018-C0660		12	84%		
		800	10-16	BLED12W-016-C0800		12.8	83%		
		1000	7-12	BLED12W-012-C1000		12	82%		

12W



Standard LED Series

- Compact Black Plastic Case
- OA: 3.35" x 1.42" x 0.75"

Constant Current or Voltage	Dimming	Output Current (mA) <i>(range if CV)</i>	Output Voltage (VDC) <i>(range if CC)</i>	Catalog Number	Nominal Input Voltage (Vac)	Max Output Power (Watts)	Efficiency	In Stock (typical)	SAM
C	No	250	24-48	LED12W-48-C0250	100-277	12	82%	●	
		350	18-36	LED12W-36-C0350		12.6	81%	●	
		350	12-24	LED12W-24-C0350		8.2	80%	●	
		500	12-24	LED12W-24-C0500		12	80%	●	
		700	8-16	LED12W-16-C0700		11.2	79%	●	
		800	8-16	LED12W-16-C0800		12.8	79%	●	
		1000	6-12	LED12W-12-C1000		12	78%	●	
V	No	250-1000	12	LED12W-12	100-277	12	78%	●	●
		200-800	16	LED12W-16		12.8	79%		
		125-500	24	LED12W-24		12	80%	●	●
		88-350	36	LED12W-36		12.6	81%		
		63-250	48	LED12W-48		12	82%		

12W



LED-LT Series

- Line Voltage Dimming
- Compact Black Plastic Case
- OA: 3.35" x 1.42" x 0.9"



Constant Current or Voltage	Dimming	Output Current (mA) <i>(range if CV)</i>	Output Voltage (VDC) <i>(range if CC)</i>	Catalog Number	Nominal Input Voltage (Vac)	Max Output Power (Watts)	Efficiency	In Stock (typical)	SAM
C	Triac For Leading Edge (Incandescent) dimmers & ELV For Trailing Edge (Electronic Low Voltage) dimmers	250	29-48	LED12W120-048-C0250-LT	120	12	85%		
		300	24-40	LED12W120-040-C0300-LT			85%		
		350	22-36	LED12W120-036-C0350-LT			84%	●	
		500	14-24	LED12W120-024-C0500-LT			83%	●	
		800	10-16	LED12W120-016-C0800-LT			82%	●	
		1000	7-12	LED12W120-012-C1000-LT			81%		
		250	29-48	LED12W230-048-C0250-LT			230	12	85%
		300	24-40	LED12W230-040-C0300-LT	85%				
		350	22-36	LED12W230-036-C0350-LT	84%				
		500	14-24	LED12W230-024-C0500-LT	83%				
		800	10-16	LED12W230-016-C0800-LT	82%				
		1000	7-12	LED12W230-012-C1000-LT	81%				

16W



LED-LT Series

- Line Voltage Dimming
- Compact Black Plastic Case
- OA: 3.74" x 1.61" x 0.98"



Constant Current or Voltage	Dimming	Output Current (mA) <i>(range if CV)</i>	Output Voltage (VDC) <i>(range if CC)</i>	Catalog Number	Nominal Input Voltage (Vac)	Max Output Power (Watts)	Efficiency	In Stock (typical)	SAM
C	Triac For Leading Edge (Incandescent) dimmers & ELV For Trailing Edge (Electronic Low Voltage) dimmers	350	28-46	LED16W120-046-C0350-LT	120	16	85%		
		450	22-36	LED16W120-036-C0450-LT			85%		
		550	18-30	LED16W120-030-C0550-LT			84%	●	
		600	17-28	LED16W120-028-C0600-LT			84%		
		700	14-24	LED16W120-024-C0700-LT			83%	●	
		1140	8-14	LED16W120-014-C1140-LT			82%	●	
		1330	7-12	LED16W120-012-C1330-LT			82%		
		350	28-46	LED16W230-046-C0350-LT	230	16	85%		
		450	22-36	LED16W230-036-C0450-LT			85%		
		550	18-30	LED16W230-030-C0550-LT			84%		
		600	17-28	LED16W230-028-C0600-LT			84%		
		700	14-24	LED16W230-024-C0700-LT			83%		
		1140	8-14	LED16W230-014-C1140-LT			82%		
		1330	7-12	LED16W230-012-C1330-LT			82%		

17W



Standard LED Series

- Compact Black Plastic Case
- OA: 8.43" x 0.98" x 0.87"

Constant Current or Voltage	Dimming	Output Current (mA) <i>(range if CV)</i>	Output Voltage (VDC) <i>(range if CC)</i>	Catalog Number	Nominal Input Voltage (Vac)	Max Output Power (Watts)	Efficiency	In Stock (typical)	SAM
C	No	470	18-36	LED17W-036-C0470	100-277	17	83%		
		700	12-24	LED17W-024-C0700			82%	●	
		1400	6-12	LED17W-012-C1400			82%		
V	No	350-1400	12	LED17W-012	100-277	17	82%	●	●
		175-700	24	LED17W-024			82%	●	●
		118-470	36	LED17W-036			83%		

20W



Budget BLED Series

- Compact Black Plastic Case
- OA: 2.73" x 2.72" x 1.03"

Constant Current or Voltage	Dimming	Output Current (mA) <i>(range if CV)</i>	Output Voltage (VDC) <i>(range if CC)</i>	Catalog Number	Nominal Input Voltage (Vac)	Max Output Power (Watts)	Efficiency	In Stock (typical)	SAM
C	No	100	120-200	BLED20W-200-C0100	100-277	20	88%		
		130	90-150	BLED20W-150-C0130			88%		
		200	60-100	BLED20W-100-C0200			87%		
		320	34-57	BLED20W-057-C0350			87%		
		420	29-48	BLED20W-048-C0420			86%		
		465	26-43	BLED20W-043-C0465			86%		
		500	24-40	BLED20W-040-C0500			85%		
		550	21-36	BLED20W-036-C0550			85%		
		700	17-28	BLED20W-028-C0700			84%		
		830	14-24	BLED20W-024-C0830			84%		
		900	13-22	BLED20W-022-C0900			83%	●	
		1110	11-18	BLED20W-018-C1110			83%		
		1330	9-15	BLED20W-015-C1330			82%		
		1700	7-12	BLED20W-012-C1700			81%		

20W



Standard LED Series

• Compact Black Plastic Case
• OA: 3.74" x 1.61" x 0.98"

Constant Current or Voltage	Dimming	Output Current (mA) <i>(range if CV)</i>	Output Voltage (VDC) <i>(range if CC)</i>	Catalog Number	Nominal Input Voltage (Vac)	Max Output Power (Watts)	Efficiency	In Stock (typical)	SAM
C	No	350	19-57	LED20W-57-C0350	100-277	20	84%		
		350	16-48	LED20W-48-C0350		16.8	83%		
		460	15-43	LED20W-43-C0460		20	83%		
		500	14-40	LED20W-40-C0500		20	82%		
		550	18-36	LED20W-36-C0550		20	82%	●	
		700	10-28	LED20W-28-C0700		20	81%		
		830	8-24	LED20W-24-C0830		20	81%		
		910	12-22	LED20W-22-C0910		20	81%		
		1100	10-18	LED20W-18-C1100		20	80%		
		1330	9-15	LED20W-15-C1330		20	80%		
		1540	7-13	LED20W-13-C1540		20	79%		
		1660	7-12	LED20W-12-C1660		20	78%		
		C	0-10V (-D) Optional (-PD)	350		19-57	LED20W-57-C0350-D	100-277	20
350	16-48			LED20W-48-C0350-D	16.8	83%			
460	15-43			LED20W-43-C0460-D	20	83%			
500	14-40			LED20W-40-C0500-D	20	82%			
550	18-36			LED20W-36-C0550-D	20	82%			
700	10-28			LED20W-28-C0700-D	20	81%			
830	8-24			LED20W-24-C0830-D	20	81%			
910	12-22			LED20W-22-C0910-D	20	81%			
1100	10-18			LED20W-18-C1100-D	20	80%			
1330	9-15			LED20W-15-C1330-D	20	80%			
1540	7-13			LED20W-13-C1540-D	20	79%			
1660	7-12			LED20W-12-C1660-D	20	78%			
V	No			415-1660	12	LED20W-12	100-277		20
		385-1540	13	LED20W-13	20	82%			
		333-1330	15	LED20W-15	20	83%			
		275-1100	18	LED20W-18	20	83%			
		228-910	22	LED20W-22	20	84%			
		208-830	24	LED20W-24	20	84%		●	●
		175-700	28	LED20W-28	20	84%			
		138-550	36	LED20W-36	20	85%			
		125-500	40	LED20W-40	20	85%			
		115-460	43	LED20W-43	20	85%			
		88-350	48	LED20W-48	16.8	85%			
		88-350	57	LED20W-57	20	85%			

20W



LED-LT Series

- Line Voltage Dimming
- Compact Black Plastic Case
- OA: 3.74" x 1.61" x 0.98"

Constant Current or Voltage	Dimming	Output Current (mA) <i>(range if CV)</i>	Output Voltage (VDC) <i>(range if CC)</i>	Catalog Number	Nominal Input Voltage (Vac)	Max Output Power (Watts)	Efficiency	In Stock (typical)	SAM
C	Triac For Leading Edge (Incandescent) dimmers & ELV For Trailing Edge (Electronic Low Voltage) dimmers	350	34-57	LED20W120-057-C0350-LT	120	20	85%	●	
		460	26-43	LED20W120-043-C0460-LT			85%		
		500	24-40	LED20W120-040-C0500-LT			85%		
		550	22-36	LED20W120-036-C0550-LT			83%		
		700	17-28	LED20W120-028-C0700-LT			82%	●	
		830	14-24	LED20W120-024-C0830-LT			82%		
		1100	11-18	LED20W120-018-C1100-LT			81%	●	
		1660	7-12	LED20W120-012-C1660-LT			80%		
		350	34-57	LED20W230-057-C0350-LT	230	20	85%		
		460	26-43	LED20W230-043-C0460-LT			85%		
		500	24-40	LED20W230-040-C0500-LT			85%		
		550	22-36	LED20W230-036-C0550-LT			83%		
		700	17-28	LED20W230-028-C0700-LT			82%		
		830	14-24	LED20W230-024-C0830-LT			82%		
		1100	11-18	LED20W230-018-C1100-LT			81%		
		1660	7-12	LED20W230-012-C1660-LT			80%		

25W



Budget BLED Series

- Compact Black Plastic Case
- OA: 3.44" x 1.44" x 0.94"

Constant Current or Voltage	Dimming	Output Current (mA) <i>(range if CV)</i>	Output Voltage (VDC) <i>(range if CC)</i>	Catalog Number	Nominal Input Voltage (Vac)	Max Output Power (Watts)	Efficiency	In Stock (typical)	SAM
C	No	120	120-200	BLED25W-200-C0120	100-277	25	89%		
		160	90-150	BLED25W-150-C0160			89%		
		250	60-100	BLED25W-100-C0250			89%		
		350	43-72	BLED25W-072-C0350			88%		
		400	37-62	BLED25W-062-C0400			88%		
		450	34-56	BLED25W-056-C0450			88%		
		520	29-48	BLED25W-048-C0520			87%		
		580	26-43	BLED25W-043-C0580			87%		
		700	21-36	BLED25W-036-C0700			86%		
		850	17-28	BLED25W-028-C0850			86%		
		1040	14-24	BLED25W-024-C1040			85%		
		1250	13-20	BLED25W-020-C1250			84%		
		2100	7-12	BLED25W-012-C2100			83%		

25W



LDC Series

- DC input, DC output
- Black Plastic Case
- OA: 3.07" x 3.15" x 0.99"

Constant Current or Voltage	Dimming	Output Current (mA) <i>(range if CV)</i>	Output Voltage (VDC) <i>(range if CC)</i>	Catalog Number	Nominal Input Voltage (VDC)	Max Output Power (Watts)	Efficiency	In Stock (typical)	SAM
C	No	350	36-72	LDC25W-072-C0350	12-24	25	90%		
		450	19-56	LDC25W-048-C0450			89%		
		700	18-36	LDC25W-036-C0700			88%		
		1040	12-24	LDC25W-024-C1040			86%		
V	No	260-1040	24	LDC25W-024	12-24	25	86%		
		175-700	36	LDC25W-036			88%		
		112-450	56	LDC25W-048			89%		
		88-350	72	LDC25W-072			90%		

25W



Standard LED Series

- Compact Black Plastic Case
- OA: 3.07" x 3.15" x 0.99"

Constant Current or Voltage	Dimming	Output Current (mA) <i>(range if CV)</i>	Output Voltage (VDC) <i>(range if CC)</i>	Catalog Number	Nominal Input Voltage (Vac)	Max Output Power (Watts)	Efficiency	In Stock (typical)	SAM
C	No	350	24-72	LED25W-72-C0350	100-277	25	86%	●	
		350	13-40	LED25W-40-C0350		14	84%		
		350	10-28	LED25W-28-C0350		9.8	83%		
		400	21-62	LED25W-62-C0400		24.8	85%		
		450	19-56	LED25W-56-C0450		25	84%	●	
		500	13-40	LED25W-40-C0500		20	84%	●	
		620	13-40	LED25W-40-C0620		24.8	84%		
		700	12-36	LED25W-36-C0700		25	84%	●	
		850	10-28	LED25W-28-C0850		23.8	83%		
		1040	8-24	LED25W-24-C1040		25	83%	●	
		1250	7-20	LED25W-20-C1250		25	83%	●	
		1400	6-18	LED25W-18-C1400		25	82%	●	
		1560	6-16	LED25W-16-C1560		25	82%	●	
		1750	5-14	LED25W-14-C1750		24.5	82%		
		2080	4-12	LED25W-12-C2080		25	81%	●	
		0-10V (-D) Optional (-PD)	350	24-72		LED25W-72-C0350-D	100-277	25	86%
	350		13-40	LED25W-40-C0350-D	14	84%		●	
	350		10-28	LED25W-28-C0350-D	9.8	83%		●	
	400		21-62	LED25W-62-C0400-D	24.8	85%			
	450		19-56	LED25W-56-C0450-D	25	84%		●	
	500		13-40	LED25W-40-C0500-D	20	84%		●	
	620		13-40	LED25W-40-C0620-D	24.8	84%		●	
	700		12-36	LED25W-36-C0700-D	25	84%		●	
	850		10-28	LED25W-28-C0850-D	23.8	83%		●	
	1040		8-24	LED25W-24-C1040-D	25	83%		●	
	1250		7-20	LED25W-20-C1250-D	25	83%			
	1400		6-18	LED25W-18-C1400-D	25	82%		●	
	V	No	520-2080	12	LED25W-12	100-277	25	81%	●
438-1750			14	LED25W-14	24.5		82%		
390-1560			16	LED25W-16	25		82%		
360-1400			18	LED25W-18	25		82%		
313-1250			20	LED25W-20	25		83%		
260-1040			24	LED25W-24	25		83%	●	●
213-850			28	LED25W-28	23.8		83%		
175-700			36	LED25W-36	25		84%		
155-620			40	LED25W-40	24.8		84%		
113-450			56	LED25W-56	25		84%		
100-400			62	LED25W-62	24.8		85%		
86-350			72	LED25W-72	25		86%		

25W



LED-LE/TE Series

- Line Voltage Dimming
- Compact Black Plastic Case
- OA: 3.07" x 3.15" x 0.99"

Constant Current or Voltage	Dimming	Output Current (mA) <i>(range if CV)</i>	Output Voltage (VDC) <i>(range if CC)</i>	Catalog Number	Nominal Input Voltage (Vac)	Max Output Power (Watts)	Efficiency	In Stock (typical)	SAM
C	INC For Leading Edge (Incandescent) dimmers	350	36-72	LED25W-72-C0350-LE	100-277	25	86%	●	
		520	24-48	LED25W-48-C0520-LE			85%		
		700	18-36	LED25W-36-C0700-LE			84%	●	
		1040	12-24	LED25W-24-C1040-LE			83%	●	
	ELV For Trailing Edge (Electronic Low Voltage) dimmers	350	36-72	LED25W-72-C0350-TE	100-277	25	86%		
		520	24-48	LED25W-48-C0520-TE			85%		
		700	18-36	LED25W-36-C0700-TE			84%	●	
		1040	12-24	LED25W-24-C1040-TE			83%		

25W

LEDDC Series

- AC or DC input
- Compact Black Plastic Case
- OA: 3.07" x 3.15" x 0.99"

Constant Current or Voltage	Dimming	Output Current (mA) <i>(range if CV)</i>	Output Voltage (VDC) <i>(range if CC)</i>	Catalog Number	Nominal Input Voltage (Vac)	Max Output Power (Watts)	Efficiency	In Stock (typical)	SAM
C	No	350	24-72	LEDDC25W-072-C0350	100-277 Vac or 108-250 Vdc	25	86%		
	0-10V	350	24-72	LEDDC25W-072-C0350-D			86%		
V	No	88-350	72	LEDDC25W-072			86%		

25W



LED-HL Series

- Hazardous Location
- X= B (bottom) or S (side) leads
- Compact Black Plastic Case
- OA: 3.07" x 3.15" x 1.18"

Constant Current or Voltage	Dimming	Output Current (mA) <i>(range if CV)</i>	Output Voltage (VDC) <i>(range if CC)</i>	Catalog Number	Nominal Input Voltage (Vac)	Max Output Power (Watts)	Efficiency	In Stock (typical)	SAM
C	No	350	24-72	LED25W-72-C0350-HL-X	100-277	25	86%		
		400	21-62	LED25W-62-C0400-HL-X		24.8	85%		
		450	19-56	LED25W-56-C0450-HL-X		25	84%		
		560	13-45	LED25W-45-C0560-HL-X		25	84%		
		620	13-40	LED25W-40-C0620-HL-X		24.8	84%		
		700	12-36	LED25W-36-C0700-HL-X		25	83%		
		850	10-28	LED25W-28-C0850-HL-X		23.8	82%		
		1040	8-24	LED25W-24-C1040-HL-X		25	82%		
		1250	7-20	LED25W-20-C1250-HL-X		25	82%		
		1400	6-18	LED25W-18-C1400-HL-X		25	81%		
		1560	6-16	LED25W-16-C1560-HL-X		25	81%		
		1750	5-14	LED25W-14-C1750-HL-X		24.5	80%		
		2080	4-12	LED25W-12-C2080-HL-X		25	78%		

25W



LED-HL Series

- Hazardous Location
- X= B (bottom) or S (side) leads
- Compact Black Plastic Case
- OA: 3.07" x 3.15" x 1.18"

Constant Current or Voltage	Dimming	Output Current (mA) <i>(range if CV)</i>	Output Voltage (VDC) <i>(range if CC)</i>	Catalog Number	Nominal Input Voltage (Vac)	Max Output Power (Watts)	Efficiency	In Stock (typical)	SAM
C	0-10V (-D) Optional (-PD)	350	24-72	LED25W-72-C0350-HL-XD	100-277	25	86%		
		400	21-62	LED25W-62-C0400-HL-XD		24.8	85%		
		450	19-56	LED25W-56-C0450-HL-XD		25	84%		
		560	13-45	LED25W-45-C0560-HL-XD		25	84%		
		620	13-40	LED25W-40-C0620-HL-XD		24.8	84%		
		700	12-36	LED25W-36-C0700-HL-XD		25	83%		
		850	10-28	LED25W-28-C0850-HL-XD		23.8	82%		
		1040	8-24	LED25W-24-C1040-HL-XD		25	82%		
		1250	7-20	LED25W-20-C1250-HL-XD		25	82%		
		1400	6-18	LED25W-18-C1400-HL-XD		25	81%		
		1560	6-16	LED25W-16-C1560-HL-XD		25	81%		
		1750	5-14	LED25W-14-C1750-HL-XD		24.5	80%		
		2080	4-12	LED25W-12-C2080-HL-XD		25	78%		
V	No	520-2080	12	LED25W-12-HL-X	100-277	25	81%		
		438-1750	14	LED25W-14-HL-X		24.5	82%		
		390-1560	16	LED25W-16-HL-X		25	82%		
		360-1400	18	LED25W-18-HL-X		25	82%		
		313-1250	20	LED25W-20-HL-X		25	83%		
		260-1040	24	LED25W-24-HL-X		25	83%		
		213-850	28	LED25W-28-HL-X		23.8	83%		
		175-700	36	LED25W-36-HL-X		25	84%		
		140-560	45	LED25W-45-HL-X		25	84%		
		155-620	40	LED25W-40-HL-X		24.8	84%		
		113-450	56	LED25W-56-HL-X		25	84%		
		100-400	62	LED25W-62-HL-X		24.8	85%		
		88-350	72	LED25W-72-HL-X		25	86%		

30W



Standard LED Series

- Compact Black Plastic Case
- OA: 5.31" x 1.69" x 0.98"

Constant Current or Voltage	Dimming	Output Current (mA) <i>(range if CV)</i>	Output Voltage (VDC) <i>(range if CC)</i>	Catalog Number	Nominal Input Voltage (Vac)	Max Output Power (Watts)	Efficiency	In Stock (typical)	SAM
C	No	350	28-85	LED30W-85-C0350	100-277	29.8	88%	●	
		400	25-75	LED30W-75-C0400		30.0	87%		
		450	22-66	LED30W-66-C0450		29.7	87%	●	
		700	14-42	LED30W-42-C0700		29.4	87%	●	
		830	12-36	LED30W-36-C0830		29.9	87%		
		1250	8-24	LED30W-24-C1250		30.0	86%		
		1660	6-18	LED30W-18-C1660		29.8	85%	●	
		2500	4-12	LED30W-12-C2500		30.0	85%		
	0-10V (-D) Optional (-PD)	350	28-85	LED30W-85-C0350-D	100-277	29.8	88%	●	
		400	25-75	LED30W-75-C0400-D		30.0	87%		
		450	22-66	LED30W-66-C0450-D		29.7	87%	●	
		700	14-42	LED30W-42-C0700-D		29.4	87%	●	
		830	12-36	LED30W-36-C0830-D		29.9	87%	●	
		1250	8-24	LED30W-24-C1250-D		30.0	86%	●	
1660		6-18	LED30W-18-C1660-D	29.8		85%	●		
2500		4-12	LED30W-12-C2500-D	30.0		85%			
V	No	625-2500	12	LED30W-12	100-277	30.0	84%	●	●
		415-1660	18	LED30W-18		30.0	85%		
		313-1250	24	LED30W-24		30.0	85%	●	●
		208-830	36	LED30W-36		29.9	86%		
		175-700	42	LED30W-42		29.4	87%		
		113-450	66	LED30W-66		29.7	87%		
		100-400	75	LED30W-75		30.0	87%		
		88-350	85	LED30W-85		29.8	88%		

35W



Standard LED Series

- Compact Black Plastic Case
- OA: 9.1" x 1.05" x 1.02"

Constant Current or Voltage	Dimming	Output Current (mA) <i>(range if CV)</i>	Output Voltage (VDC) <i>(range if CC)</i>	Catalog Number	Nominal Input Voltage (Vac)	Max Output Power (Watts)	Efficiency	In Stock (typical)	SAM
C	No	350	34-100	LED35W-100-C0350	100-277	35	90%		
		700	18-54	LED35W-054-C0700			89%	●	
		1050	18-36	LED35W-036-C1050			88%		
		1250	14-28	LED35W-028-C1250			88%		
	0-10V (-D)	350	34-100	LED35W-100-C0350-D	100-277	35	90%		
		700	18-54	LED35W-054-C0700-D			89%	●	
		1050	18-36	LED35W-036-C1050-D			88%	●	
		1250	14-28	LED35W-028-C1250-D			88%		
V	No	313-1250	28	LED35W-028	100-277	35	88%		
		263-1050	36	LED35W-036			88%		
		175-700	54	LED35W-054			89%		
		86-350	100	LED35W-100			90%		

35W



Budget BLED Series

• Compact Black Plastic Case
• OA: 3.74" x 1.61" x 0.98"

Constant Current or Voltage	Dimming	Output Current (mA) <i>(range if CV)</i>	Output Voltage (VDC) <i>(range if CC)</i>	Catalog Number	Nominal Input Voltage (Vac)	Max Output Power (Watts)	Efficiency	In Stock (typical)	SAM
C	No	170	120-200	BLED35W-200-C0170	100-277	34	89%		
		360	60-100	BLED35W-100-C0360		36	89%		
		500	42-70	BLED35W-070-C0500		35	89%		
		550	38-63	BLED35W-063-C0550		35	88%		
		640	32-54	BLED35W-054-C0640		35	88%		
		700	29-48	BLED35W-048-C0700		34	87%		
		810	26-43	BLED35W-043-C0810		35	87%		
		1000	21-36	BLED35W-036-C1000		36	86%		
		1200	18-30	BLED35W-030-C1200		36	86%		
		1500	14-24	BLED35W-024-C1500		36	85%		
		1600	13-22	BLED35W-022-C1600		35	84%		
		2000	10-18	BLED35W-018-C2000		36	84%		
		3000	7-12	BLED35W-012-C3000		36	83%		

39W



LEDPR Series

• **Programmable**
• Steel Case
• B= Bottom leads
• OA: 4.57" x 3.07" x 1.17"

Constant Current or Voltage	Dimming	Output Current (mA) <i>(range if CV)</i>	Output Voltage (VDC) <i>(range if CC)</i>	Catalog Number	Nominal Input Voltage (Vac)	Max Output Power (Watts)	Efficiency	In Stock (typical)	SAM
C	0-10V	190-700	20-56	LED39WPR-056-C0700-BD	100-277	39.2	85%	●	

40W



TLED Series

• Compact Black Plastic Case
• OA: 3.78" x 2.82" x 1.26"



Constant Current or Voltage	Dimming	Output Current (mA) <i>(range if CV)</i>	Output Voltage (VDC) <i>(range if CC)</i>	Catalog Number	Nominal Input Voltage (Vac)	Max Output Power (Watts)	Efficiency	In Stock (typical)	SAM
C	0-10V	190-700	30-54	TLED40W-054-C0700-D	120-277	37.8	86%	●	

40W



BLED Series

• Compact Black Plastic Case
• OA: 3.15" x 3.07" x 0.99"

Constant Current or Voltage	Dimming	Output Current (mA) <i>(range if CV)</i>	Output Voltage (VDC) <i>(range if CC)</i>	Catalog Number	Nominal Input Voltage (Vac)	Max Output Power (Watts)	Efficiency	In Stock (typical)	SAM
C	No	200	120-200	BLED40W-200-C0200	100-277	40	90%		
		350	68-114	BLED40W-114-C0350		40	90%		
		400	60-100	BLED40W-100-C0400		40	89%		
		550	43-72	BLED40W-072-C0550		40	88%		
		700	32-54	BLED40W-054-C0700		37.8	87%		
		830	29-48	BLED40W-048-C0830		40	86%		
		930	26-43	BLED40W-043-C0930		40	85%		
		1100	21-36	BLED40W-036-C1100		40	85%		
		1400	17-28	BLED40W-028-C1400		40	84%		
		1670	14-24	BLED40W-024-C1670		40	83%		
		3340	7-12	BLED40W-012-C3340		40	82%		

40W



Standard LED Series

- Compact Black Plastic Case
- OA: 3.74" x 2.76" x 1.26"

Constant Current or Voltage	Dimming	Output Current (mA) <i>(range if CV)</i>	Output Voltage (VDC) <i>(range if CC)</i>	Catalog Number	Nominal Input Voltage (Vac)	Max Output Power (Watts)	Efficiency	In Stock (typical)	SAM
C	No	350	38-114	LED40W-114-C0350	100-277	40.0	87%	●	
		400	33-100	LED40W-100-C0400		40.0	87%		
		450	30-89	LED40W-089-C0450		40.0	87%	●	
		700	18-54	LED40W-054-C0700		37.8	86%	●	
		830	16-48	LED40W-048-C0830		40.0	86%		
		900	15-45	LED40W-045-C0900		40.0	86%		
		1000	20-40	LED40W-040-C1000		40	85%		
		1100	12-36	LED40W-036-C1100		40.0	86%	●	
		1300	10-30	LED40W-030-C1300		39.0	86%		
		1300	8-24	LED40W-024-C1300		31.2	86%		
		1400	10-30	LED40W-030-C1400		42	85%		
		1400	8-24	LED40W-024-C1400		33.6	86%	●	
		1670	8-24	LED40W-024-C1670		40.0	86%	●	
		1820	7-22	LED40W-022-C1820		40.0	86%	●	
		2200	6-18	LED40W-018-C2200		40.0	85%		
		2680	5-15	LED40W-015-C2680		40.0	85%		
		3080	4-13	LED40W-013-C3080		40.0	85%		
		3330	4-12	LED40W-012-C3330		40.0	84%		
		4000	3-10	LED40W-010-C4000		40.0	84%		
		4450	3-9	LED40W-009-C4450		40.0	83%		
C	0-10V (-D) Optional (-D3) (-PD)	350	38-114	LED40W-114-C0350-D	100-277	40.0	87%	●	
		400	33-100	LED40W-100-C0400-D		40.0	87%		
		450	30-89	LED40W-089-C0450-D		40.0	87%	●	
		700	18-54	LED40W-054-C0700-D		37.8	86%	●	
		830	16-48	LED40W-048-C0830-D		40.0	86%		
		900	15-45	LED40W-045-C0900-D		40.0	86%	●	
		1000	20-40	LED40W-040-C1000-D		40	85%	●	
		1100	12-36	LED40W-036-C1100-D		40.0	86%	●	
		1300	10-30	LED40W-030-C1300-D		39.0	86%	●	
		1300	8-24	LED40W-024-C1300-D		31.2	86%	●	
		1400	10-30	LED40W-030-C1400-D		42	85%	●	
		1400	8-24	LED40W-024-C1400-D		33.6	86%	●	
		1670	8-24	LED40W-024-C1670-D		40.0	86%	●	
		1820	7-22	LED40W-022-C1820-D		40.0	86%		
		2200	6-18	LED40W-018-C2200-D		40.0	85%		
		2680	5-15	LED40W-015-C2680-D		40.0	85%		
		3080	4-13	LED40W-013-C3080-D		40.0	85%		
		3330	4-12	LED40W-012-C3330-D		40.0	84%		
		4000	3-10	LED40W-010-C4000-D		40.0	84%		
		4450	3-9	LED40W-009-C4450-D		40.0	83%		

40W



Standard LED Series

- Compact Black Plastic Case
- OA: 3.74" x 2.76" x 1.26"

Constant Current or Voltage	Dimming	Output Current (mA) <i>(range if CV)</i>	Output Voltage (VDC) <i>(range if CC)</i>	Catalog Number	Nominal Input Voltage (Vac)	Max Output Power (Watts)	Efficiency	In Stock (typical)	SAM
V	No	1113-4450	9	LED40W-009	100-277	40.0	83%		
		1000-4000	10	LED40W-010		40.0	84%		
		833-3330	12	LED40W-012		40.0	84%	●	●
		770-3080	13	LED40W-013		40.0	85%		
		670-2680	15	LED40W-015		40.0	85%		
		550-2200	18	LED40W-018		40.0	85%		
		455-1820	22	LED40W-022		40.0	86%		
		418-1670	24	LED40W-024		40.0	86%	●	●
		325-1300	30	LED40W-030		39.0	86%		
		275-1100	36	LED40W-036		40.0	86%		
		225-900	45	LED40W-045		40.0	86%		
		208-830	48	LED40W-048		40.0	86%		
		175-700	54	LED40W-054		37.8	86%		
		113-450	89	LED40W-089		40.0	87%		
		100-400	100	LED40W-100		40.0	87%		
		88-350	114	LED40W-114		40.0	87%		

40W



LED-LT Series

- **Line Voltage Dimming**
- Compact Black Plastic Case
- OA: 3.74" x 2.76" x 1.26"

Constant Current or Voltage	Dimming	Output Current (mA) <i>(range if CV)</i>	Output Voltage (VDC) <i>(range if CC)</i>	Catalog Number	Nominal Input Voltage (Vac)	Max Output Power (Watts)	Efficiency	In Stock (typical)	SAM
C	INC For Leading Edge (Incandescent) dimmers & ELV For Trailing Edge (Electronic Low Voltage) dimmers	350	57-114	LED40W120-114-C0350-LT	120	40	85%		
		700	27-54	LED40W120-054-C0700-LT			85%	●	
		1000	20-40	LED40W120-040-C1000-LT			84%	●	
		1100	18-36	LED40W120-036-C1100-LT			84%	●	
		1300	15-30	LED40W120-030-C1300-LT			83%		
		1670	15-24	LED40W120-024-C1670-LT			82%		
		350	57-114	LED40W230-114-C0350-LT	230	40	85%		
		700	27-54	LED40W230-054-C0700-LT			85%		
		1000	20-40	LED40W230-040-C1000-LT			84%		
		1100	18-36	LED40W230-036-C1100-LT			84%		
		1300	15-30	LED40W230-030-C1300-LT			83%		
		1670	12-24	LED40W230-024-C1670-LT			82%		

40W



LED-HL Series

- Hazardous Location
- X= B (bottom) or S (side) leads
- Compact Black Plastic Case
- OA: 3.78" x 2.8" x 1.4"

Constant Current or Voltage	Dimming	Output Current (mA) <i>(range if CV)</i>	Output Voltage (VDC) <i>(range if CC)</i>	Catalog Number	Nominal Input Voltage (Vac)	Max Output Power (Watts)	Efficiency	In Stock (typical)	SAM
C	No	300	44-130	LED40W-130-C0300-HL-X	100-277	40	87		
		350	38-114	LED40W-114-C0350-HL-X		40	86		
		400	33-100	LED40W-100-C0400-HL-X		40	86		
		450	30-89	LED40W-089-C0450-HL-X		40	86		
		550	24-72	LED40W-072-C0550-HL-X		40	85		
		700	18-54	LED40W-054-C0700-HL-X		38	85		
		830	16-48	LED40W-048-C0830-HL-X		40	85		
		900	16-45	LED40W-045-C0900-HL-X		40	85		
		1000	13-40	LED40W-040-C1000-HL-X		40	85		
		1100	12-36	LED40W-036-C1100-HL-X		40	85		
		1400	10-30	LED40W-030-C1400-HL-X		42	85		
		1670	8-24	LED40W-024-C1670-HL-X		40	85		
		1820	7-22	LED40W-022-C1820-HL-X		40	85		
		2200	6-18	LED40W-018-C2220-HL-X		40	84		
		2680	5-15	LED40W-015-C2680-HL-X		40	84		
		3080	4-13	LED40W-013-C3080-HL-X		40	84		
		3330	4-12	LED40W-012-C3330-HL-X		40	83		
4000	3-10	LED40W-010-C4000-HL-X	40	83					
4450	3-9	LED40W-009-C4450-HL-X	40	82					
C	0-10V (-D) Optional (-PD)	300	44-130	LED40W-130-C0300-HL-XD	100-277	40	87		
		350	38-114	LED40W-114-C0350-HL-XD		40	86		
		400	33-100	LED40W-100-C0400-HL-XD		40	86		
		450	30-89	LED40W-089-C0450-HL-XD		40	86		
		550	24-72	LED40W-072-C0550-HL-XD		40	85		
		700	18-54	LED40W-054-C0700-HL-XD		38	85		
		830	16-48	LED40W-048-C0830-HL-XD		40	85		
		900	16-45	LED40W-045-C0900-HL-XD		40	85		
		1000	13-40	LED40W-040-C1000-HL-XD		40	85		
		1100	12-36	LED40W-036-C1100-HL-XD		40	85		
		1400	10-30	LED40W-030-C1400-HL-XD		42	85		
		1670	8-24	LED40W-024-C1670-HL-XD		40	85		
		1820	7-22	LED40W-022-C1820-HL-XD		40	85		
		2200	6-18	LED40W-018-C2220-HL-XD		40	84		
		2680	5-15	LED40W-015-C2680-HL-XD		40	84		
		3080	4-13	LED40W-013-C3080-HL-XD		40	84		
		3330	4-12	LED40W-012-C3330-HL-XD		40	83		
4000	3-10	LED40W-010-C4000-HL-XD	40	83					
4450	3-9	LED40W-009-C4450-HL-XD	40	82					
V	No	1113-4450	9	LED40W-009-HL-X	100-277	40	87		
		1000-4000	10	LED40W-010-HL-X		40	86		
		825-3330	12	LED40W-012-HL-X		40	86		
		770-3080	13	LED40W-013-HL-X		40	86		
		670-2680	15	LED40W-015-HL-X		40	85		
		550-2200	18	LED40W-018-HL-X		40	85		
		455-1820	22	LED40W-022-HL-X		40	85		
		418-1670	24	LED40W-024-HL-X		40	85		
		350-1400	30	LED40W-030-HL-X		42	85		
		275-1100	36	LED40W-036-HL-X		40	85		
		250-1000	40	LED40W-040-HL-X		40	85		
		225-900	45	LED40W-045-HL-X		40	85		
		208-830	48	LED40W-048-HL-X		40	85		
		175-700	54	LED40W-054-HL-X		38	84		
		138-550	72	LED40W-072-HL-X		40	84		
		113-450	89	LED40W-089-HL-X		40	84		
		100-400	100	LED40W-100-HL-X		40	83		
		75-350	114	LED40W-114-HL-X		40	83		
		75-300	130	LED40W-130-HL-X		40	82		

40W



LED-HV Series

- High Voltage 347-480V Input
- Compact Black Plastic Case
- OA: 3.78" x 2.8" x 1.26"

Constant Current or Voltage	Dimming	Output Current (mA) <i>(range if CV)</i>	Output Voltage (VDC) <i>(range if CC)</i>	Catalog Number	Nominal Input Voltage (Vac)	Max Output Power (Watts)	Efficiency	In Stock (typical)	SAM
C	No	300	44-130	LED40W-130-C0300-HV	347-480	39.0	87%		
		350	38-114	LED40W-114-C0350-HV		39.9	86%		
		400	33-100	LED40W-100-C0400-HV		40	86%		
		450	30-89	LED40W-089-C0450-HV		40	86%		
		550	24-72	LED40W-072-C0550-HV		39.6	85%		
		700	20-57	LED40W-057-C0700-HV		40	85%		
		830	16-48	LED40W-048-C0830-HV		39.8	85%		
		900	16-45	LED40W-045-C0900-HV		40	85%		
		1000	13-40	LED40W-040-C1000-HV		40	85%		
		1100	12-36	LED40W-036-C1100-HV		39.6	85%		
		1400	10-30	LED40W-030-C1400-HV		40	85%		
		1670	8-24	LED40W-024-C1670-HV		40	85%		
		1820	7-22	LED40W-022-C1820-HV		40	85%		
		2200	6-18	LED40W-018-C2200-HV		39.6	84%		
		2680	5-15	LED40W-015-C2680-HV		40	85%		
		3080	4-13	LED40W-013-C3080-HV		40	84%		
		3330	4-12	LED40W-012-C3330-HV		40	83%		
		4000	3-10	LED40W-010-C4000-HV		40	83%		
4450	3-9	LED40W-009-C4450-HV	40	82%					
C	0-10V (-D) Optional (-PD)	300	44-130	LED40W-130-C0300-D-HV	347-480	39.0	87%		
		350	38-114	LED40W-114-C0350-D-HV		39.9	86%	●	
		400	33-100	LED40W-100-C0400-D-HV		40	86%		
		450	30-89	LED40W-089-C0450-D-HV		40	86%		
		550	24-72	LED40W-072-C0550-D-HV		39.6	85%		
		700	20-57	LED40W-057-C0700-D-HV		40	85%	●	
		830	16-48	LED40W-048-C0830-D-HV		39.8	85%		
		900	16-45	LED40W-045-C0900-D-HV		40	85%	●	
		1000	13-40	LED40W-040-C1000-D-HV		40	85%	●	
		1100	12-36	LED40W-036-C1100-D-HV		39.6	85%	●	
		1400	10-30	LED40W-030-C1400-D-HV		40	85%	●	
		1670	8-24	LED40W-024-C1670-D-HV		40	85%		
		1820	7-22	LED40W-022-C1820-D-HV		40	85%		
		2200	6-18	LED40W-018-C2200-D-HV		39.6	84%		
		2680	5-15	LED40W-015-C2680-D-HV		40	85%		
		3080	4-13	LED40W-013-C3080-D-HV		40	84%		
		3330	4-12	LED40W-012-C3330-D-HV		40	83%		
		4000	3-10	LED40W-010-C4000-D-HV		40	83%		
4450	3-9	LED40W-009-C4450-D-HV	40	82%					
V	No	1113-4450	9	LED40W-009-HV	347-480	40	82%		
		1000-4000	10	LED40W-010-HV		40	83%		
		825-3330	12	LED40W-012-HV		40	83%		
		770-3080	13	LED40W-013-HV		40	84%		
		670-2680	15	LED40W-015-HV		40	85%		
		550-2200	18	LED40W-018-HV		39.6	85%		
		455-1820	22	LED40W-022-HV		40	85%		
		418-1670	24	LED40W-024-HV		40	85%		
		350-1400	30	LED40W-030-HV		40	85%		
		275-1100	36	LED40W-036-HV		39.6	85%		
		250-1000	40	LED40W-040-HV		40	85%		
		225-900	45	LED40W-045-HV		40	85%		
		208-830	48	LED40W-048-HV		39.8	85%		
		175-700	57	LED40W-057-HV		40	85%		
		138-550	72	LED40W-072-HV		39.6	85%		
		113-450	89	LED40W-089-HV		40	86%		
		100-400	100	LED40W-100-HV		40	86%		
		75-350	114	LED40W-114-HV		39.9	86%		
75-300	130	LED40W-130-HV	39.0	87%					

40W



LED-HL-HV Series

- High Voltage 347-480V Input
- X= B (bottom) or S (side) leads
- Compact Black Plastic Case
- OA: 3.78" x 2.8" x 1.26"

Constant Current or Voltage	Dimming	Output Current (mA) <i>(range if CV)</i>	Output Voltage (VDC) <i>(range if CC)</i>	Catalog Number	Nominal Input Voltage (Vac)	Max Output Power (Watts)	Efficiency	In Stock (typical)	SAM
C	No	300	44-130	LED40W-130-C0300-HL-X-HV	347-480	39.0	87%		
		350	38-114	LED40W-114-C0350-HL-X-HV		39.9	86%		
		400	33-100	LED40W-100-C0400-HL-X-HV		40	86%		
		450	30-89	LED40W-089-C0450-HL-X-HV		40	86%		
		550	24-72	LED40W-072-C0550-HL-X-HV		39.6	85%		
		700	20-57	LED40W-057-C0700-HL-X-HV		40	85%		
		830	16-48	LED40W-048-C0830-HL-X-HV		39.8	85%		
		900	16-45	LED40W-045-C0900-HL-X-HV		40	85%		
		1000	13-40	LED40W-040-C1000-HL-X-HV		40	85%		
		1100	12-36	LED40W-036-C1100-HL-X-HV		39.6	85%		
		1400	10-30	LED40W-030-C1400-HL-X-HV		40	85%		
		1670	8-24	LED40W-024-C1670-HL-X-HV		40	85%		
		1820	7-22	LED40W-022-C1820-HL-X-HV		40	85%		
		2200	6-18	LED40W-018-C2220-HL-X-HV		39.6	84%		
		2680	5-15	LED40W-015-C2680-HL-X-HV		40	85%		
		3080	4-13	LED40W-013-C3080-HL-X-HV		40	84%		
		3330	4-12	LED40W-012-C3330-HL-X-HV		40	83%		
		4000	3-10	LED40W-010-C4000-HL-X-HV		40	83%		
4450	3-9	LED40W-009-C4450-HL-X-HV	40	82%					
C	0-10V (-D) Optional (-PD)	300	44-130	LED40W-130-C0300-D-HL-XD-HV	347-480	39.0	87%		
		350	38-114	LED40W-114-C0350-D-HL-XD-HV		39.9	86%		
		400	33-100	LED40W-100-C0400-D-HL-XD-HV		40	86%		
		450	30-89	LED40W-089-C0450-D-HL-XD-HV		40	86%		
		550	24-72	LED40W-072-C0550-D-HL-XD-HV		39.6	85%		
		700	20-57	LED40W-057-C0700-D-HL-XD-HV		40	85%		
		830	16-48	LED40W-048-C0830-D-HL-XD-HV		39.8	85%		
		900	16-45	LED40W-045-C0900-D-HL-XD-HV		40	85%		
		1000	13-40	LED40W-040-C1000-D-HL-XD-HV		40	85%		
		1100	12-36	LED40W-036-C1100-D-HL-XD-HV		39.6	85%		
		1400	10-30	LED40W-030-C1400-D-HL-XD-HV		40	85%		
		1670	8-24	LED40W-024-C1670-D-HL-XD-HV		40	85%		
		1820	7-22	LED40W-022-C1820-D-HL-XD-HV		40	85%		
		2200	6-18	LED40W-018-C2220-D-HL-XD-HV		39.6	84%		
		2680	5-15	LED40W-015-C2680-D-HL-XD-HV		40	85%		
		3080	4-13	LED40W-013-C3080-D-HL-XD-HV		40	84%		
		3330	4-12	LED40W-012-C3330-D-HL-XD-HV		40	83%		
		4000	3-10	LED40W-010-C4000-D-HL-XD-HV		40	83%		
4450	3-9	LED40W-009-C4450-D-HL-XD-HV	40	82%					
V	No	1113-4450	9	LED40W-009-HL-X-HV	347-480	40	82%		
		1000-4000	10	LED40W-010-HL-X-HV		40	83%		
		825-3330	12	LED40W-012-HL-X-HV		40	83%		
		770-3080	13	LED40W-013-HL-X-HV		40	84%		
		670-2680	15	LED40W-015-HL-X-HV		40	85%		
		550-2200	18	LED40W-018-HL-X-HV		39.6	85%		
		455-1820	22	LED40W-022-HL-X-HV		40	85%		
		418-1670	24	LED40W-024-HL-X-HV		40	85%		
		350-1400	30	LED40W-030-HL-X-HV		40	85%		
		275-1100	36	LED40W-036-HL-X-HV		39.6	85%		
		250-1000	40	LED40W-040-HL-X-HV		40	85%		
		225-900	45	LED40W-045-HL-X-HV		40	85%		
		208-830	48	LED40W-048-HL-X-HV		39.8	85%		
		175-700	57	LED40W-057-HL-X-HV		40	85%		
		138-550	72	LED40W-072-HL-X-HV		39.6	85%		
		113-450	89	LED40W-089-HL-X-HV		40	86%		
		100-400	100	LED40W-100-HL-X-HV		40	86%		
		75-350	114	LED40W-114-HL-X-HV		39.9	86%		
75-300	130	LED40W-130-HL-X-HV	39.0	87%					

50W



BLED Series

- Compact Black Plastic Case
- OA: 4.92" x 1.69" x 0.98"

Constant Current or Voltage	Dimming	Output Current (mA) <i>(range if CV)</i>	Output Voltage (VDC) <i>(range if CC)</i>	Catalog Number	Nominal Input Voltage (Vac)	Max Output Power (Watts)	Efficiency	In Stock (typical)	SAM
C	No	250	120-200	BLED50W-200-C0250	100-277	50	90%		
		350	85-142	BLED50W-142-C0350		50	90%		
		500	60-100	BLED50W-100-C0500		50	89%		
		700	43-72	BLED50W-072-C0700		50	89%		
		910	32-54	BLED50W-054-C0910		50	88%		
		1040	29-48	BLED50W-048-C1040		50	88%		
		1250	25-42	BLED50W-042-C1250		52	87%		
		1200	23-39	BLED50W-039-C1200		47	86%		
		1400	21-36	BLED50W-036-C1400		50	86%		
		1750	17-28	BLED50W-028-C1750		49	85%		
		2100	16-26	BLED50W-026-C2100		55	84%		
		4200	7-12	BLED50W-012-C4200		50	83%		

50W



Standard LED Series

- Black Plastic Case
- OA: 7.24" x 1.69" x 0.98"

Constant Current or Voltage	Dimming	Output Current (mA) <i>(range if CV)</i>	Output Voltage (VDC) <i>(range if CC)</i>	Catalog Number	Nominal Input Voltage (Vac)	Max Output Power (Watts)	Efficiency	In Stock (typical)	SAM	
C	No	350	47-142	LED50W-142-C0350	100-277	49.7	89%	●		
		450	37-111	LED50W-111-C0450		49.9	89%			
		530	24-72	LED50W-072-C0530		38.1	88%	●		
		700	24-72	LED50W-072-C0700		50.0	88%	●		
		830	20-60	LED50W-060-C0830		49.8	88%			
		1050	16-48	LED50W-048-C1050		50.0	88%			
		1190	14-42	LED50W-042-C1190		50.0	87%			
		1250	13-40	LED50W-040-C1250		50.0	87%			
		1400	12-36	LED50W-036-C1400		50.0	87%	●		
		1750	9-29	LED50W-029-C1750		50.0	87%			
		2100	8-24	LED50W-024-C2100		50.0	87%			
		2500	7-20	LED50W-020-C2500		50.0	87%			
	2800	6-18	LED50W-018-C2800	50.0	86%	●				
	3330	5-15	LED50W-015-C3330	49.9	85%					
	4200	4-12	LED50W-012-C4200	50.0	84%					
	0-10V	0-10V	350	47-142	LED50W-142-C0350-D	100-277	49.7	89%	●	
			450	37-111	LED50W-111-C0450-D		49.9	89%	●	
			530	24-72	LED50W-072-C0530-D		38.1	88%	●	
			700	24-72	LED50W-072-C0700-D		50.0	88%	●	
			830	20-60	LED50W-060-C0830-D		49.8	88%		
			1050	16-48	LED50W-048-C1050-D		50.0	88%	●	
			1190	14-42	LED50W-042-C1190-D		50.0	87%	●	
			1250	13-40	LED50W-040-C1250-D		50.0	87%	●	
			1400	12-36	LED50W-036-C1400-D		50.0	87%	●	
1750			9-29	LED50W-029-C1750-D	50.0		87%	●		
2100			8-24	LED50W-024-C2100-D	50.0		87%	●		
2500			7-20	LED50W-020-C2500-D	50.0		87%	●		
2800	6-18	LED50W-018-C2800-D	50.0	86%						
3330	5-15	LED50W-015-C3330-D	49.9	85%						
4200	4-12	LED50W-012-C4200-D	50.0	84%						
V	No	1050-4200	12	LED50W-012	100-277	50.0	84%	●	●	
		833-3330	15	LED50W-015		49.9	85%			
		700-2800	18	LED50W-018		50.0	86%			
		625-2500	20	LED50W-020		50.0	87%			
		525-2100	24	LED50W-024		50.0	87%	●	●	
		438-1750	29	LED50W-029		50.0	87%			
		350-1400	36	LED50W-036		50.0	87%			
		313-1250	40	LED50W-040		50.0	87%			
		298-1190	42	LED50W-042		50.0	87%			
		263-1050	48	LED50W-048		50.0	88%			
		208-830	60	LED50W-060		49.8	88%			
		175-700	72	LED50W-072		50.0	88%			
		113-450	111	LED50W-111		49.9	89%			
		88-350	142	LED50W-142		49.7	89%			

55W



LED-WPG Series

- Compact Black Plastic Case
- Program driver with GUI Software or Rset
- OA: 3.08" x 4.24" x 1.1"



Constant Current or Voltage	Dimming	Output Current (mA) <i>(range if CV)</i>	Output Voltage (VDC) <i>(range if CC)</i>	Catalog Number	Nominal Input Voltage (Vac)	Max Output Power (Watts)	Efficiency	In Stock (typical)	SAM
C	0-10V	100-1500	12-55	LED55WPG1-055-C1500-02	100-277	55	90%	●	

60W



Performance PLED Series

- Black Aluminum Case
- UL Type TL and HL Rated
- OA: 5.51" x 2.33" x 1.47"

Constant Current or Voltage	Dimming	Output Current (mA) <i>(range if CV)</i>	Output Voltage (VDC) <i>(range if CC)</i>	Catalog Number	Nominal Input Voltage (Vac)	Max Output Power (Watts)	Efficiency	In Stock (typical)	SAM
C	No	280	72-214	PLED60W-214-C0280	100-277	60	91%		
		360	56-166	PLED60W-166-C0360			91%		
		550	36-108	PLED60W-108-C0550			90%		
		850	24-72	PLED60W-072-C0850			90%		
		1100	18-54	PLED60W-054-C1100			91%		
		1250	16-48	PLED60W-048-C1250			88%		
		1450	14-42	PLED60W-042-C1450			88%		
		1670	12-36	PLED60W-036-C1670			86%		
		2250	9-27	PLED60W-027-C2250			86%		
		2500	8-24	PLED60W-024-C2500			85%		
		3000	7-20	PLED60W-020-C3000			84%		
		4000	5-15	PLED60W-015-C4000			84%		
		5000	4-12	PLED60W-012-C5000			84%		
	0-10V (-D) Optional (-D3) (-PD)	280	72-214	PLED60W-214-C0280-D			91%		
		360	56-166	PLED60W-166-C0360-D			91%		
		550	36-108	PLED60W-108-C0550-D			90%		
		850	24-72	PLED60W-072-C0850-D			90%		
		1100	18-54	PLED60W-054-C1100-D			91%		
		1250	16-48	PLED60W-048-C1250-D			88%		
		1450	14-42	PLED60W-042-C1450-D			88%		
		1670	12-36	PLED60W-036-C1670-D			86%	●	
		2250	9-27	PLED60W-027-C2250-D			86%		
		2500	8-24	PLED60W-024-C2500-D			85%	●	
		3000	7-20	PLED60W-020-C3000-D			84%		
		4000	5-15	PLED60W-015-C4000-D			84%		
		5000	4-12	PLED60W-012-C5000-D			84%		
V	No	1563-5000	12	PLED60W-012	100-277	60	84%		●
		1250-4000	15	PLED60W-015			84%		
		938-3000	20	PLED60W-020			84%		
		783-2500	24	PLED60W-024			85%	●	●
		700-2250	27	PLED60W-027			85%		
		525-1670	36	PLED60W-036			86%		
		448-1450	42	PLED60W-042			86%		
		390-1250	48	PLED60W-048			88%		
		350-1200	54	PLED60W-054			88%		
		263-850	72	PLED60W-072			90%		
		175-550	108	PLED60W-108			90%		
		113-360	166	PLED60W-166			91%		
		88-280	214	PLED60W-214			91%		

60W



LEDDC Series

- AC or DC input, DC output
- Black Aluminum Case
- OA: 7.25" x 2.81" x 1.83"

Constant Current or Voltage	Dimming	Output Current (mA) <i>(range if CV)</i>	Output Voltage (VDC) <i>(range if CC)</i>	Catalog Number	Nominal Input Voltage (Vac)	Max Output Power (Watts)	Efficiency	In Stock (typical)	SAM
C	No	700	28-86	LEDDC60W-086-C0700	100-277 Vac or 108-250 Vdc	60	92%		
	0-10V (-D) Opt.(-PD)	700	28-86	LEDDC60W-086-C0700-D		60	92%		
V	No	175-700	86	LEDDC60W-086		60	92%		

75W

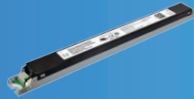


Standard LEG Series

- Black Steel F-Can Style Case
- OA: 9.47" x 1.80" x 1.32"

Constant Current or Voltage	Dimming	Output Current (mA) <i>(range if CV)</i>	Output Voltage (VDC) <i>(range if CC)</i>	Catalog Number	Nominal Input Voltage (Vac)	Max Output Power (Watts)	Efficiency	In Stock (typical)	SAM
C	No	350	72-214	LEG75W-214-C0350	120-277	74.9	92%		
		530	48-142	LEG75W-142-C0530		75.0	91%		
		700	36-108	LEG75W-108-C0700		75.0	90%		
		1050	24-72	LEG75W-072-C1050		75.0	89%		
	0-10V	350	72-214	LEG75W-214-C0350-D	120-277	74.9	92%		
		530	48-142	LEG75W-142-C0530-D		75.0	91%	●	
		700	36-108	LEG75W-108-C0700-D		75.0	90%	●	
		1050	24-72	LEG75W-072-C1050-D		75.0	89%	●	

75W-T5



LED T5 Series

- Steel T5 Style Case
- UL Type TL and HL Rated
- OA: 16.69" x 1.18" x 1.02"



Constant Current or Voltage	Dimming	Output Current (mA) <i>(range if CV)</i>	Output Voltage (VDC) <i>(range if CC)</i>	Catalog Number	Nominal Input Voltage (Vac)	Max Output Power (Watts)	Efficiency	In Stock (typical)	SAM
C	0-10V	350	107-214	LED75WT5-214-C0350-D	100-277	75	90%		
		700	54-108	LED75WT5-108-C0700-D			89%		
		1400	27-54	LED75WT5-054-C1400-D			88%		
		2000	19-38	LED75WT5-038-C2000-D			87%		

75W

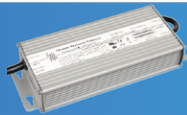


Performance PLED Series

- Black Aluminum Case
- UL Type TL and HL Rated
- OA: 5.95" x 2.32" x 1.47"

Constant Current or Voltage	Dimming	Output Current (mA) <i>(range if CV)</i>	Output Voltage (VDC) <i>(range if CC)</i>	Catalog Number	Nominal Input Voltage (Vac)	Max Output Power (Watts)	Efficiency	In Stock (typical)	SAM
C	No	350	72-214	PLED75W-214-C0350	100-277	75	92%		
		450	56-166	PLED75W-166-C0450			92%		
		700	36-108	PLED75W-108-C0700			92%		
		1050	24-72	PLED75W-072-C1050			91%		
		1400	18-54	PLED75W-054-C1400			91%		
		1560	16-48	PLED75W-048-C1560			90%		
		1790	14-42	PLED75W-042-C1790			89%		
		2100	12-36	PLED75W-036-C2100			89%		
		2800	9-27	PLED75W-027-C2800			88%		
		3130	8-24	PLED75W-024-C3130			88%		
		3750	7-20	PLED75W-020-C3750			87%		
		5000	5-15	PLED75W-015-C5000			86%		
		6250	4-12	PLED75W-012-C6250			86%		
C	0-10V (-D) Optional (-D3) (-PD)	350	72-214	PLED75W-214-C0350-D	100-277	75	92%	●	
		450	56-166	PLED75W-166-C0450-D			92%	●	
		700	36-108	PLED75W-108-C0700-D			92%	●	
		1050	24-72	PLED75W-072-C1050-D			91%	●	
		1400	18-54	PLED75W-054-C1400-D			91%	●	
		1560	16-48	PLED75W-048-C1560-D			90%	●	
		1790	14-42	PLED75W-042-C1790-D			89%	●	
		2100	12-36	PLED75W-036-C2100-D			89%	●	
		2800	9-27	PLED75W-027-C2800-D			88%	●	
		3130	8-24	PLED75W-024-C3130-D			88%	●	
		3750	7-20	PLED75W-020-C3750-D			87%		
		5000	5-15	PLED75W-015-C5000-D			86%		
		6250	4-12	PLED75W-012-C6250-D			86%		
V	No	1563-6250	12	PLED75W-012	100-277	75	92%	●	●
		1250-5000	15	PLED75W-015			92%		
		938-3750	20	PLED75W-020			92%		
		783-3130	24	PLED75W-024			91%	●	●
		700-2800	27	PLED75W-027			91%		
		525-2100	36	PLED75W-036			90%		
		448-1790	42	PLED75W-042			89%		
		390-1560	48	PLED75W-048			89%		
		350-1400	54	PLED75W-054			88%		
		263-1050	72	PLED75W-072			88%		
		175-700	108	PLED75W-108			87%		
		113-450	166	PLED75W-166			86%		
		88-350	214	PLED75W-214			86%		

75W



Value TSC Series

- High Voltage 277-480V Input
- Aluminum Case
- OA: 8.74" x 3.46" x 1.54"

Constant Current or Voltage	Dimming	Output Current (mA) <i>(range if CV)</i>	Output Voltage (VDC) <i>(range if CC)</i>	Catalog Number	Nominal Input Voltage (Vac)	Max Output Power (Watts)	Efficiency	In Stock (typical)	SAM
C	No	350	107-214	TSC-075S035ST	277-480	75	87%		
		700	53-107	TSC-075S070ST			86%		
		1050	36-72	TSC-075S105ST			87%		
		1400	26-53	TSC-075S140ST			87%		
		2100	18-36	TSC-075S210ST			86%		
		3150	12-24	TSC-075S315ST			85%		
	0-10V	350	107-214	TSC-075S035DT	277-480	75	87%		
		700	53-107	TSC-075S070DT			86%		
		1050	36-72	TSC-075S105DT			87%		
		1400	26-53	TSC-075S140DT			87%		
		2100	18-36	TSC-075S210DT			86%		
		3150	12-24	TSC-075S315DT			85%		

96W-LT



LED LT Series

- Black Plastic Case
- UL Type TL and HL Rated
- OA: 16.69" x 1.18" x 1.02"



Constant Current or Voltage	Dimming	Output Current (mA) <i>(range if CV)</i>	Output Voltage (VDC) <i>(range if CC)</i>	Catalog Number	Nominal Input Voltage (Vac)	Max Output Power (Watts)	Efficiency	In Stock (typical)	SAM
C	Triac For Leading Edge (Incandescent) dimmers & ELV For Trailing Edge (Electronic Low Voltage) dimmers	350	162-274	LED96W-274-C0350-LT	100-277	96	92%		
		700	81-137	LED96W-137-C0700-LT			92%		
		1050	54-92	LED96W-092-C1050-LT			92%		
		1400	41-69	LED96W-069-C1400-LT			91%		
		1750	32-54	LED96W-054-C1750-LT			91%		
		2000	28-48	LED96W-048-C2000-LT			90%		
		2450	23-39	LED96W-039-C2450-LT			90%		
		3150	18-30	LED96W-030-C3150-LT			90%		
		4000	14-24	LED96W-024-C4000-LT			89%		

96W-HV



Performance PLED Series

- High Voltage 277-480V Input
- Black Aluminum Case
- UL Type TL and HL Rated
- OA: 5.95" x 2.32" x 1.47"

Constant Current or Voltage	Dimming	Output Current (mA) <i>(range if CV)</i>	Output Voltage (VDC) <i>(range if CC)</i>	Catalog Number	Nominal Input Voltage (Vac)	Max Output Power (Watts)	Efficiency	In Stock (typical)	SAM
C	No	350	92-274	PLED96W-274-C0350-HV	277-480	96	92%		
		450	71-213	PLED96W-213-C0450-HV			92%		
		700	46-137	PLED96W-137-C0700-HV			92%		
		1050	31-92	PLED96W-092-C1050-HV			91%		
		1400	23-69	PLED96W-069-C1400-HV			91%		
		1750	18-54	PLED96W-054-C1750-HV			91%		
		2000	16-48	PLED96W-048-C2000-HV		96	90%		
		2100	16-46	PLED96W-046-C2100-HV			90%		
		2450	14-39	PLED96W-039-C2450-HV			89%		
		2660	12-36	PLED96W-036-C2660-HV			89%		
		2800	12-34	PLED96W-034-C2800-HV			89%		
		3150	10-30	PLED96W-030-C3150-HV			89%		
		3500	9-27	PLED96W-027-C3500-HV			88%		
		3840	9-25	PLED96W-025-C3840-HV			88%		
		4000	8-24	PLED96W-024-C4000-HV			88%		
		4800	7-20	PLED96W-020-C4800-HV			87%		
5350	6-18	PLED96W-018-C5350-HV	86%						

96W-HV



Performance PLED Series

- High Voltage 277-480V Input
- Black Aluminum Case
- UL Type TL and HL Rated
- OA: 5.95" x 2.32" x 1.47"

Constant Current or Voltage	Dimming	Output Current (mA) <i>(range if CV)</i>	Output Voltage (VDC) <i>(range if CC)</i>	Catalog Number	Nominal Input Voltage (Vac)	Max Output Power (Watts)	Efficiency	In Stock (typical)	SAM
C	0-10V (-D) Optional (-PD)	350	92-274	PLED96W-274-C0350-D-HV	277-480	96	88%		
		450	71-213	PLED96W-213-C0450-D-HV			88%		
		700	46-137	PLED96W-137-C0700-D-HV			86%	●	
		1050	31-92	PLED96W-092-C1050-D-HV			86%	●	
		1400	23-69	PLED96W-069-C1400-D-HV			86%	●	
		1750	18-54	PLED96W-054-C1750-D-HV			85%	●	
		2000	16-48	PLED96W-048-C2000-D-HV			85%		
		2100	16-46	PLED96W-046-C2100-D-HV			85%	●	
		2450	14-39	PLED96W-039-C2450-D-HV			84%	●	
		2660	12-36	PLED96W-036-C2660-D-HV			84%		
		2800	12-34	PLED96W-034-C2800-D-HV			84%	●	
		3150	10-30	PLED96W-030-C3150-D-HV			84%		
		3500	9-27	PLED96W-027-C3500-D-HV			84%		
		3840	9-25	PLED96W-025-C3840-D-HV			84%		
		4000	8-24	PLED96W-024-C4000-D-HV			81%	●	
		4800	7-20	PLED96W-020-C4800-D-HV			81%		
		5350	6-18	PLED96W-018-C5350-D-HV			81%		
V	No	1338-5350	18	PLED96W-018-HV	277-480	96	81%		
		1200-4800	20	PLED96W-020-HV			87%		
		1000-4000	24	PLED96W-024-HV			86%		
		960-3840	25	PLED96W-025-HV			87%		
		875-3500	27	PLED96W-027-HV			87%		
		788-3150	30	PLED96W-030-HV			86%		
		700-2800	34	PLED96W-034-HV			85%		
		665-2660	36	PLED96W-036-HV			87%		
		613-2450	39	PLED96W-039-HV			86%		
		525-2100	46	PLED96W-046-HV			87%		
		500-2000	48	PLED96W-048-HV			87%		
		438-1750	54	PLED96W-054-HV			86%		
		350-1400	69	PLED96W-069-HV			85%		
		263-1050	92	PLED96W-092-HV			86%		
		175-700	137	PLED96W-137-HV			86%		
		113-450	213	PLED96W-213-HV			88%		
		88-350	217	PLED96W-274-HV			88%		

96W

Performance PLED Series



Performance PLED Series

- Black Aluminum Case
- UL Type TL and HL Rated
- OA: 6.30" x 2.32" x 1.46"

Constant Current or Voltage	Dimming	Output Current (mA) <i>(range if CV)</i>	Output Voltage (VDC) <i>(range if CC)</i>	Catalog Number	Nominal Input Voltage (Vac)	Max Output Power (Watts)	Efficiency	In Stock (typical)	SAM	
C	No	350	92-274	PLED96W-274-C0350	100-277	96	92%			
		450	71-213	PLED96W-213-C0450			92%			
		700	46-137	PLED96W-137-C0700			92%			
		1050	31-92	PLED96W-092-C1050			91%			
		1400	23-69	PLED96W-069-C1400			91%			
		1750	18-54	PLED96W-054-C1750		96	94.5	91%		
		2000	16-48	PLED96W-048-C2000			90%			
		2100	16-46	PLED96W-046-C2100			90%			
		2450	14-39	PLED96W-039-C2450			89%			
		2660	12-36	PLED96W-036-C2660			89%			
		2800	12-34	PLED96W-034-C2800			89%			
		3150	10-30	PLED96W-030-C3150			89%			
		3500	9-27	PLED96W-027-C3500			88%			
		3840	9-25	PLED96W-025-C3840			88%			
		4000	8-24	PLED96W-024-C4000			88%			
		4800	7-20	PLED96W-020-C4800			87%			
		5350	6-18	PLED96W-018-C5350			86%			

96W

Performance PLED Series



Performance PLED Series

- Black Aluminum Case
- UL Type TL and HL Rated
- OA: 6.30" x 2.32" x 1.46"

Constant Current or Voltage	Dimming	Output Current (mA) <i>(range if CV)</i>	Output Voltage (VDC) <i>(range if CC)</i>	Catalog Number	Nominal Input Voltage (Vac)	Max Output Power (Watts)	Efficiency	In Stock (typical)	SAM
C	0-10V (-D) Optional (-D3) (-PD)	350	92-274	PLED96W-274-C0350-D	100-277	96	92%		
		450	71-213	PLED96W-213-C0450-D			92%		
		700	46-137	PLED96W-137-C0700-D			92%	●	
		1050	31-92	PLED96W-092-C1050-D			91%	●	
		1400	23-69	PLED96W-069-C1400-D			91%	●	
		1750	18-54	PLED96W-054-C1750-D			91%	●	
		2000	16-48	PLED96W-048-C2000-D		96	90%		
		2100	16-46	PLED96W-046-C2100-D			90%	●	
		2450	14-39	PLED96W-039-C2450-D			89%	●	
		2660	12-36	PLED96W-036-C2660-D			89%		
		2800	12-34	PLED96W-034-C2800-D			89%	●	
		3150	10-30	PLED96W-030-C3150-D			89%	●	
		3500	9-27	PLED96W-027-C3500-D			88%	●	
		3840	9-25	PLED96W-025-C3840-D			88%		
		4000	8-24	PLED96W-024-C4000-D			88%	●	
		4800	7-20	PLED96W-020-C4800-D			87%		
		5350	6-18	PLED96W-018-C5350-D			86%		
		V	No	1338-5350			18	PLED96W-018	100-277
1200-4800	20			PLED96W-020	87%				
1000-4000	24			PLED96W-024	88%	●	●		
960-3840	25			PLED96W-025	88%				
875-3500	27			PLED96W-027	88%				
788-3150	30			PLED96W-030	89%				
700-2800	34			PLED96W-034	89%				
665-2660	36			PLED96W-036	89%				
613-2450	39			PLED96W-039	89%				
525-2100	46			PLED96W-046	90%				
500-2000	48			PLED96W-048	90%				
438-1750	54			PLED96W-054	91%				
350-1400	69			PLED96W-069	91%				
263-1050	92			PLED96W-092	91%				
175-700	137			PLED96W-137	92%				
113-450	213			PLED96W-213	92%				
88-350	274			PLED96W-274	92%				

100W



Standard LEG Series

- Black Steel F-Can Style Case
- OA: 9.47" x 1.80" x 1.32"

Constant Current or Voltage	Dimming	Output Current (mA) <i>(range if CV)</i>	Output Voltage (VDC) <i>(range if CC)</i>	Catalog Number	Nominal Input Voltage (Vac)	Max Output Power (Watts)	Efficiency	In Stock (typical)	SAM
C	No	350	95-286	LEG100W-286-C0350	120-277	100.0	92%		
		530	63-188	LEG100W-188-C0530		99.6	91%		
		700	48-143	LEG100W-143-C0700		100.0	90%	●	
		1050	32-95	LEG100W-095-C1050		99.8	89%		
	0-10V (-D)	350	95-286	LEG100W-286-C0350-D	120-277	100.0	92%		
		530	63-188	LEG100W-188-C0530-D		99.6	91%		
		700	48-143	LEG100W-143-C0700-D		100.0	90%		
		1050	32-95	LEG100W-095-C1050-D		99.8	89%		

120W



Standard LEG Series

- Black Steel F-Can Style Case
- OA: 9.47" x 1.80" x 1.32"

Constant Current or Voltage	Dimming	Output Current (mA) <i>(range if CV)</i>	Output Voltage (VDC) <i>(range if CC)</i>	Catalog Number	Nominal Input Voltage (Vac)	Max Output Power (Watts)	Efficiency	In Stock (typical)	SAM
C	No	350	114-343	LEG120W-343-C0350	120-277	120.0	91%		
		530	75-226	LEG120W-226-C0530		120.0	91%		
		700	57-171	LEG120W-171-C0700		119.7	90%		
		1050	38-114	LEG120W-114-C1050		119.7	89%		
	0-10V	350	114-343	LEG120W-343-C0350-D	120-277	120.0	91%		
		530	75-226	LEG120W-226-C0530-D		120.0	91%		
		700	57-171	LEG120W-171-C0700-D		119.7	90%		
		1050	38-114	LEG120W-114-C1050-D		119.7	89%		

120W

Performance PLED Series



Performance PLED Series

- Black Aluminum Case
- UL Type TL and HL Rated
- OA: 7.60" x 2.32" x 1.48"

Constant Current or Voltage	Dimming	Output Current (mA) <i>(range if CV)</i>	Output Voltage (VDC) <i>(range if CC)</i>	Catalog Number	Nominal Input Voltage (Vac)	Max Output Power (Watts)	Efficiency	In Stock (typical)	SAM
C	No	350	171-343	PLED120W-343-C0350	100-277	120	93%		
		450	133-266	PLED120W-266-C0450			93%		
		700	85-171	PLED120W-171-C0700			93%		
		1050	57-114	PLED120W-114-C1050			92%		
		1400	43-86	PLED120W-086-C1400			92%		
		1750	34-68	PLED120W-068-C1750			92%		
		2100	28-57	PLED120W-057-C2100			92%		
		2450	24-49	PLED120W-049-C2450			92%		
		2800	21-43	PLED120W-043-C2800			91%		
		3150	19-38	PLED120W-038-C3150			91%		
		3500	17-34	PLED120W-034-C3500			91%		
		4200	14-28	PLED120W-028-C4200			91%		
		5000	12-24	PLED120W-024-C5000			89%		
		0-10V (-D) Optional (-D3) (-PD)	350	171-343			PLED120W-343-C0350-D	100-277	120
	450		133-266	PLED120W-266-C0450-D	93%				
	700		85-171	PLED120W-171-C0700-D	93%				
	1050		57-114	PLED120W-114-C1050-D	92%				
	1400		43-86	PLED120W-086-C1400-D	92%				
	1750		34-68	PLED120W-068-C1750-D	92%				
	2100		28-57	PLED120W-057-C2100-D	92%	●			
	2450		24-49	PLED120W-049-C2450-D	92%				
	2800		21-43	PLED120W-043-C2800-D	91%	●			
	3150		19-38	PLED120W-038-C3150-D	91%				
	V	No	1250-5000	24	PLED120W-024	100-277	120	89%	●
1050-4200			28	PLED120W-028	91%				
875-3500			34	PLED120W-034	91%				
788-3150			38	PLED120W-038	91%				
700-2800			43	PLED120W-043	91%				
613-2450			49	PLED120W-049	92%				
525-2100			57	PLED120W-057	92%				
438-1750			68	PLED120W-068	92%				
350-1400			86	PLED120W-086	92%				
263-1050			114	PLED120W-114	92%				
175-700			171	PLED120W-171	93%				
113-450			266	PLED120W-266	93%				
88-350			343	PLED120W-343	93%				

120W



PLEDDC Series

- AC or DC input
- Black Aluminum Case
- UL Type TL and HL Rated
- OA: 7.60" x 2.32" x 1.48

Constant Current or Voltage	Dimming	Output Current (mA) <i>(range if CV)</i>	Output Voltage (VDC) <i>(range if CC)</i>	Catalog Number	Nominal Input Voltage (Vac)	Max Output Power (Watts)	Efficiency	In Stock (typical)	SAM
C	No	350	114-343	PLEDDC120W-343-C0350	100-277 Vac or 108-250 Vdc	120	92%		
		450	89-266	PLEDDC120W-266-C0450			92%		
		700	57-171	PLEDDC120W-171-C0700			91%		
		1050	38-114	PLEDDC120W-114-C1050			91%		
		1400	29-86	PLEDDC120W-086-C1400			91%		
		1750	23-68	PLEDDC120W-068-C1750			91%		
		2100	19-57	PLEDDC120W-057-C2100			90%		
		2450	17-49	PLEDDC120W-049-C2450			90%		
		2800	15-43	PLEDDC120W-043-C2800			90%		
		3150	13-38	PLEDDC120W-038-C3150			90%		
		3500	12-34	PLEDDC120W-034-C3500			89%		
		4200	10-28	PLEDDC120W-028-C4200			89%		
		5000	8-24	PLEDDC120W-024-C5000			89%		
		C	0-10V (-D) Optional (-PD)	350			114-343	PLEDDC120W-343-C0350-D	100-277 Vac or 108-250 Vdc
450	89-266			PLEDDC120W-266-C0450-D	92%				
700	57-171			PLEDDC120W-171-C0700-D	91%				
1050	38-114			PLEDDC120W-114-C1050-D	91%				
1400	29-86			PLEDDC120W-086-C1400-D	91%				
1750	23-68			PLEDDC120W-068-C1750-D	91%				
2100	19-57			PLEDDC120W-057-C2100-D	90%				
2450	17-49			PLEDDC120W-049-C2450-D	90%				
2800	15-43			PLEDDC120W-043-C2800-D	90%				
3150	13-38			PLEDDC120W-038-C3150-D	90%				
3500	12-34			PLEDDC120W-034-C3500-D	89%				
4200	10-28			PLEDDC120W-028-C4200-D	89%				
5000	8-24			PLEDDC120W-024-C5000-D	89%				
V	No			1250-5000	24	PLEDDC120W-024	100-277 Vac or 108-250 Vdc	120	
		1050-4200	28	PLEDDC120W-028	89%				
		875-3500	34	PLEDDC120W-034	89%				
		788-3150	38	PLEDDC120W-038	90%				
		700-2800	43	PLEDDC120W-043	90%				
		613-2450	49	PLEDDC120W-049	90%				
		525-2100	57	PLEDDC120W-057	90%				
		438-1750	68	PLEDDC120W-068	91%				
		350-1400	86	PLEDDC120W-086	91%				
		263-1050	114	PLEDDC120W-114	91%				
		175-700	171	PLEDDC120W-171	91%				
		113-450	266	PLEDDC120W-266	92%				
		88-350	343	PLEDDC120W-343	92%				

150W



Standard LEG Series

- Black Steel F-Can Style Case
- OA: 9.47" x 2.30" x 1.65"

Constant Current or Voltage	Dimming	Output Current (mA) <i>(range if CV)</i>	Output Voltage (VDC) <i>(range if CC)</i>	Catalog Number	Nominal Input Voltage (Vac)	Max Output Power (Watts)	Efficiency	In Stock (typical)	SAM
C	No	350	120-425	LEG150W-425-C0350	120-277	148.7	92%		
		530	94-280	LEG150W-280-C0530		148.4	91%		
		700	70-210	LEG150W-210-C0700		147.0	90%		
	0-10V (-D)	350	120-425	LEG150W-425-C0350-D	120-277	148.7	92%		
		530	94-280	LEG150W-280-C0530-D		148.4	91%		
		700	70-210	LEG150W-210-C0700-D		147.0	90%		

150W

Performance PLED Series



Performance PLED Series

- Black Aluminum Case
- UL Type TL and HL Rated
- OA: 7.60" x 2.32" x 1.48"

Constant Current or Voltage	Dimming	Output Current (mA) <i>(range if CV)</i>	Output Voltage (VDC) <i>(range if CC)</i>	Catalog Number	Nominal Input Voltage (Vac)	Max Output Power (Watts)	Efficiency	In Stock (typical)	SAM
C	No	350	142-428	PLED150W-428-C0350	100-277	150	92%		
		450	111-333	PLED150W-333-C0450			92%		
		530	95-283	PLED150W-283-C0530			91%		
		700	72-214	PLED150W-214-C0700			91%		
		1050	48-142	PLED150W-142-C1050			91%		
		1400	36-107	PLED150W-107-C1400			91%		
		1750	29-85	PLED150W-085-C1750			90%		
		2100	24-71	PLED150W-071-C2100			90%		
		2450	21-61	PLED150W-061-C2450			90%		
		2800	18-53	PLED150W-053-C2800			90%		
		3150	16-48	PLED150W-048-C3150			89%		
		3500	14-42	PLED150W-042-C3500			89%		
		4200	12-35	PLED150W-035-C4200			89%		
		4900	10-30	PLED150W-030-C4900			88%		
6250	8-24	PLED150W-024-C6250	88%						
C	0-10V (-D) Optional (-D3) (-PD)	350	142-428	PLED150W-428-C0350-D	100-277	150	92%		
		450	111-333	PLED150W-333-C0450-D			92%		
		530	95-283	PLED150W-283-C0530-D			91%		
		700	72-214	PLED150W-214-C0700-D			91%	●	
		1050	48-142	PLED150W-142-C1050-D			91%		
		1400	36-107	PLED150W-107-C1400-D			91%		
		1750	29-85	PLED150W-085-C1750-D			90%		
		2100	24-71	PLED150W-071-C2100-D			90%	●	
		2450	21-61	PLED150W-061-C2450-D			90%		
		2800	18-53	PLED150W-053-C2800-D			90%		
		3150	16-48	PLED150W-048-C3150-D			89%		
		3500	14-42	PLED150W-042-C3500-D			89%		
		4200	12-35	PLED150W-035-C4200-D			89%		
		4900	10-30	PLED150W-030-C4900-D			88%		
6250	8-24	PLED150W-024-C6250-D	88%						
V	No	1563-6250	24	PLED150W-024	100-277	150	88%	●	●
		1225-4900	30	PLED150W-030			88%		
		1050-4200	35	PLED150W-035			89%		
		875-3500	42	PLED150W-042			89%		
		788-3150	48	PLED150W-048			89%		
		700-2800	53	PLED150W-053			90%		
		613-2450	61	PLED150W-061			90%		
		525-2100	71	PLED150W-071			90%		
		438-1750	85	PLED150W-085			90%		
		350-1400	107	PLED150W-107			91%		
		263-1050	142	PLED150W-142			91%		
		175-700	214	PLED150W-214			91%		
		133-530	283	PLED150W-283			91%		
		113-450	333	PLED150W-333			92%		
88-350	428	PLED150W-428	92%						

150W

PLEDDC Series



PLEDDC Series

- AC or DC input
- Black Aluminum Case
- UL Type TL and HL Rated
- OA: 7.60" x 2.32" x 1.48"

Constant Current or Voltage	Dimming	Output Current (mA) <i>(range if CV)</i>	Output Voltage (VDC) <i>(range if CC)</i>	Catalog Number	Nominal Input Voltage (Vac)	Max Output Power (Watts)	Efficiency	In Stock (typical)	SAM
C	No	350	142-428	PLEDDC150W-428-C0350	100-277 Vac or 108-250 Vdc	150	92%		
		450	111-333	PLEDDC150W-333-C0450			92%		
		530	95-283	PLEDDC150W-283-C0530			91%		
		700	72-214	PLEDDC150W-214-C0700			91%		
		1050	48-142	PLEDDC150W-142-C1050			91%		
		1400	36-107	PLEDDC150W-107-C1400			91%		
		1750	29-85	PLEDDC150W-085-C1750			90%		
		2100	24-71	PLEDDC150W-071-C2100			90%		
		2450	21-61	PLEDDC150W-061-C2450			90%		
		2800	18-53	PLEDDC150W-053-C2800			90%		
		3150	16-48	PLEDDC150W-048-C3150			89%		
		3500	14-42	PLEDDC150W-042-C3500			89%		
		4200	12-35	PLEDDC150W-035-C4200			89%		
		4900	10-30	PLEDDC150W-030-C4900			88%		
6250	8-24	PLEDDC150W-024-C6250	88%						

150W

PLEDDC Series

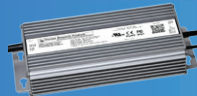


PLEDDC Series

- AC or DC input
- Black Aluminum Case
- UL Type TL and HL Rated
- OA: 7.60" x 2.32" x 1.48"

Constant Current or Voltage	Dimming	Output Current (mA) <i>(range if CV)</i>	Output Voltage (VDC) <i>(range if CC)</i>	Catalog Number	Nominal Input Voltage (Vac)	Max Output Power (Watts)	Efficiency	In Stock (typical)	SAM
C	0-10V (-D) Optional (-PD)	350	142-428	PLEDDC150W-428-C0350-D	100-277 Vac or 108-250 Vdc	150	92%		
		450	111-333	PLEDDC150W-333-C0450-D			92%		
		530	95-283	PLEDDC150W-283-C0530-D			91%		
		700	72-214	PLEDDC150W-214-C0700-D			91%		
		1050	48-142	PLEDDC150W-142-C1050-D			91%		
		1400	36-107	PLEDDC150W-107-C1400-D			91%		
		1750	29-85	PLEDDC150W-085-C1750-D			90%		
		2100	24-71	PLEDDC150W-071-C2100-D			90%		
		2450	21-61	PLEDDC150W-061-C2450-D			90%		
		2800	18-53	PLEDDC150W-053-C2800-D			90%		
		3150	16-48	PLEDDC150W-048-C3150-D			89%		
		3500	14-42	PLEDDC150W-042-C3500-D			89%		
		4200	12-35	PLEDDC150W-035-C4200-D			89%		
		4900	10-30	PLEDDC150W-030-C4900-D			88%		
		6250	8-24	PLEDDC150W-024-C6250-D			88%		
V	No	1563-6250	24	PLEDDC150W-024	100-277 Vac or 108-250 Vdc	150	88%		
		1225-4900	30	PLEDDC150W-030			88%		
		1050-4200	35	PLEDDC150W-035			89%		
		875-3500	42	PLEDDC150W-042			89%		
		788-3150	48	PLEDDC150W-048			89%		
		700-2800	53	PLEDDC150W-053			90%		
		613-2450	61	PLEDDC150W-061			90%		
		525-2100	71	PLEDDC150W-071			90%		
		438-1750	85	PLEDDC150W-085			90%		
		350-1400	107	PLEDDC150W-107			91%		
		263-1050	142	PLEDDC150W-142			91%		
		175-700	214	PLEDDC150W-214			91%		
		133-530	283	PLEDDC150W-283			91%		
		113-450	333	PLEDDC150W-333			92%		
		88-350	428	PLEDDC150W-428			92%		

150W

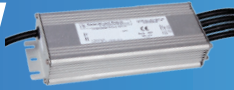


VLED-HV Series

- High Voltage 347-480V Input
- Aluminum Case
- OA: 8.74" x 3.70" x 1.71"

Constant Current or Voltage	Dimming	Output Current (mA) <i>(range if CV)</i>	Output Voltage (VDC) <i>(range if CC)</i>	Catalog Number	Nominal Input Voltage (Vac)	Max Output Power (Watts)	Efficiency	In Stock (typical)	SAM
C	No	580	129-258	VLED150W-258-C0580-HV	347-480	150	91%		
		700	107-214	VLED150W-214-C0700-HV			91%		
		1050	71-142	VLED150W-142-C1050-HV			90%		
		1400	53-107	VLED150W-107-C1400-HV			90%		
		2100	36-71	VLED150W-071-C2100-HV			90%		
		2800	27-54	VLED150W-054-C2800-HV			90%		
		3500	21-43	VLED150W-043-C3500-HV			89%		
		4200	18-36	VLED150W-036-C4200-HV			89%		
		0-10V (-D)	580	129-258			VLED150W-258-C0580-D-HV	347-480	150
	700		107-214	VLED150W-214-C0700-D-HV	91%				
	1050		71-142	VLED150W-142-C1050-D-HV	90%				
	1400		53-107	VLED150W-107-C1400-D-HV	90%				
	2100		36-71	VLED150W-071-C2100-D-HV	90%				
	2800		27-54	VLED150W-054-C2800-D-HV	90%				
	3500		21-43	VLED150W-043-C3500-D-HV	89%	●			
	4200		18-36	VLED150W-036-C4200-D-HV	89%				

152W



TRC-Q Series

- 4 Channel Output
- Aluminum Case
- OA: 8.37" x 3.46" x 1.50"

Constant Current or Voltage	Dimming	Output Current (mA) <i>(range if CV)</i>	Output Voltage (VDC) <i>(range if CC)</i>	Catalog Number	Nominal Input Voltage (Vac)	Max Output Power (Watts)	Efficiency	In Stock (typical)	SAM
C	No	4 X 700	29-54	TRC-152Q070ST	100-277	151 W (4x37.75W)	91%		
		4 X 1050	19-36	TRC-152Q105ST		151 W (4x37.75W)	90%		
		4 X 1400	14-25	TRC-152Q140ST		140 W (4x35W)	89%		
	0-10V	4 X 700	29-54	TRC-152Q070DT	100-277	151 W (4x37.75W)	91%	●	
		4 X 1050	19-36	TRC-152Q105DT		151 W (4x37.75W)	90%		
		4 X 1400	14-25	TRC-152Q140DT		140 W (4x35W)	89%		

200W



Performance PLED Series

- Black Aluminum Case
- UL Type TL and HL Rated
- OA: 9.32" x 2.32" x 1.48

Constant Current or Voltage	Dimming	Output Current (mA) <i>(range if CV)</i>	Output Voltage (VDC) <i>(range if CC)</i>	Catalog Number	Nominal Input Voltage (Vac)	Max Output Power (Watts)	Efficiency	In Stock (typical)	SAM
C	No	450	149-445	PLED200W-445-C0450	100-277	200	93%		
		700	95-285	PLED200W-285-C0700			93%		
		1050	64-190	PLED200W-190-C1050			93%		
		1400	48-142	PLED200W-142-C1400			93%		
		1750	38-114	PLED200W-114-C1750			92%		
		2100	32-95	PLED200W-095-C2100			92%		
		2450	27-81	PLED200W-081-C2450			92%		
		2800	24-71	PLED200W-071-C2800			91%		
		3150	21-63	PLED200W-063-C3150			91%		
		3500	19-57	PLED200W-057-C3500			91%		
		4200	16-47	PLED200W-047-C4200			91%		
		4900	14-40	PLED200W-040-C4900			91%		
		5600	12-35	PLED200W-035-C5600			91%		
		6300	11-32	PLED200W-032-C6300			91%		
	8330	8-24	PLED200W-024-C8330	90%					
	0-10V (-D) Optional (-D3) (-PD)	450	149-445	PLED200W-445-C0450-D	100-277	200	93%		
		700	95-285	PLED200W-285-C0700-D			93%	●	
		1050	64-190	PLED200W-190-C1050-D			93%	●	
		1400	48-142	PLED200W-142-C1400-D			93%		
		1750	38-114	PLED200W-114-C1750-D			92%		
		2100	32-95	PLED200W-095-C2100-D			92%		
		2450	27-81	PLED200W-081-C2450-D			92%		
		2800	24-71	PLED200W-071-C2800-D			91%		
		3150	21-63	PLED200W-063-C3150-D			91%		
		3500	19-57	PLED200W-057-C3500-D			91%		
		4200	16-47	PLED200W-047-C4200-D			91%		
4900		14-40	PLED200W-040-C4900-D	91%					
5600	12-35	PLED200W-035-C5600-D	91%						
6300	11-32	PLED200W-032-C6300-D	91%						
8330	8-24	PLED200W-024-C8330-D	90%						

200W



Performance PLED Series

- Black Aluminum Case
- UL Type TL and HL Rated
- OA: 9.32" x 2.32" x 1.48"

Constant Current or Voltage	Dimming	Output Current (mA) <i>(range if CV)</i>	Output Voltage (VDC) <i>(range if CC)</i>	Catalog Number	Nominal Input Voltage (Vac)	Max Output Power (Watts)	Efficiency	In Stock (typical)	SAM
V	No	2083-8330	24	PLED200W-024	100-277	200	90%		●
		1575-6300	32	PLED200W-032			91%		
		1400-5600	35	PLED200W-035			91%		
		1225-4900	40	PLED200W-040			91%		
		1050-4200	47	PLED200W-047			91%		
		875-3500	57	PLED200W-057			91%		
		788-3150	63	PLED200W-063			91%		
		700-2800	71	PLED200W-071			91%		
		613-2450	81	PLED200W-081			92%		
		525-2100	95	PLED200W-095			92%		
		438-1750	114	PLED200W-114			92%		
		350-1400	142	PLED200W-142			93%		
		163-1050	190	PLED200W-190			93%		
		175-700	285	PLED200W-285			93%		
		113-450	445	PLED200W-445			93%		

200W



PLEDDC Series

- AC or DC input
- Black Aluminum Case
- UL Type TL and HL Rated
- OA: 9.32" x 2.32" x 1.48"

Constant Current or Voltage	Dimming	Output Current (mA) <i>(range if CV)</i>	Output Voltage (VDC) <i>(range if CC)</i>	Catalog Number	Nominal Input Voltage (Vac)	Max Output Power (Watts)	Efficiency	In Stock (typical)	SAM	
C	No	450	149-445	PLEDDC200W-445-C0450	100-277 Vac or 108-250 Vdc	200	92%			
		700	95-285	PLEDDC200W-285-C0700			92%			
		1050	64-190	PLEDDC200W-190-C1050			91%			
		1400	48-142	PLEDDC200W-142-C1400			91%			
		1750	38-114	PLEDDC200W-114-C1750			91%			
		2100	32-95	PLEDDC200W-095-C2100			91%			
		2450	27-81	PLEDDC200W-081-C2450			90%			
		2800	24-71	PLEDDC200W-071-C2800			90%			
		3150	21-63	PLEDDC200W-063-C3150			90%			
		3500	19-57	PLEDDC200W-057-C3500			90%			
		4200	16-47	PLEDDC200W-047-C4200			89%			
		4900	14-40	PLEDDC200W-040-C4900			89%			
		5600	12-35	PLEDDC200W-035-C5600			89%			
		6300	11-32	PLEDDC200W-032-C6300			88%			
		8330	8-24	PLEDDC200W-024-C8330			88%			
	0-10V (-D) Optional (-PD)		450	149-445	PLEDDC200W-445-C0450-D	100-277 Vac or 108-250 Vdc	200	92%		
			700	95-285	PLEDDC200W-285-C0700-D			92%		
			1050	64-190	PLEDDC200W-190-C1050-D			91%		
			1400	48-142	PLEDDC200W-142-C1400-D			91%		
			1750	38-114	PLEDDC200W-114-C1750-D			91%		
			2100	32-95	PLEDDC200W-095-C2100-D			91%		
			2450	27-81	PLEDDC200W-081-C2450-D			90%		
			2800	24-71	PLEDDC200W-071-C2800-D			90%		
			3150	21-63	PLEDDC200W-063-C3150-D			90%		
			3500	19-57	PLEDDC200W-057-C3500-D			90%		
			4200	16-47	PLEDDC200W-047-C4200-D			89%		
			4900	14-40	PLEDDC200W-040-C4900-D			89%		
			5600	12-35	PLEDDC200W-035-C5600-D			89%		
			6300	11-32	PLEDDC200W-032-C6300-D			88%		
			8330	8-24	PLEDDC200W-024-C8330-D			88%		

200W

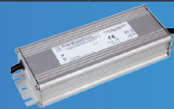


PLEDDC Series

- AC or DC Input
- Black Aluminum Case
- OA: 9.32" x 2.32" x 1.48
- UL Type TL and HL Rated

Constant Current or Voltage	Dimming	Output Current (mA) <i>(range if CV)</i>	Output Voltage (VDC) <i>(range if CC)</i>	Catalog Number	Nominal Input Voltage (Vac)	Max Output Power (Watts)	Efficiency	In Stock (typical)	SAM
V	No	2083-8330	24	PLEDDC200W-024	100-277 Vac or 108-250 Vdc	200	88%		
		1575-6300	32	PLEDDC200W-032			88%		
		1400-5600	35	PLEDDC200W-035			89%		
		1225-4900	40	PLEDDC200W-040			89%		
		1050-4200	47	PLEDDC200W-047			89%		
		875-3500	57	PLEDDC200W-057			90%		
		788-3150	63	PLEDDC200W-063			90%		
		700-2800	71	PLEDDC200W-071			90%		
		613-2450	81	PLEDDC200W-081			90%		
		525-2100	95	PLEDDC200W-095			91%		
		438-1750	114	PLEDDC200W-114			91%		
		350-1400	142	PLEDDC200W-142			91%		
		163-1050	190	PLEDDC200W-190			91%		
		175-700	285	PLEDDC200W-285			92%		
113-450	445	PLEDDC200W-445	92%						

250W



Value TRV Series

- Aluminum Case
- OA: 9.88" x 3.46" x 1.32"

Constant Current or Voltage	Dimming	Output Current (mA) <i>(range if CV)</i>	Output Voltage (VDC) <i>(range if CC)</i>	Catalog Number	Nominal Input Voltage (Vac)	Max Output Power (Watts)	Efficiency	In Stock (typical)	SAM
V	No	0-18.33	12	TRV-250S012ST	100-277	220	92%		
		0-10.41	24	TRV-250S024ST		250	93%	●	
		0-6.94	36	TRV-250S036ST		250	94%		
		0-5.95	42	TRV-250S042ST		250	94%		
		0-5.20	48	TRV-250S048ST		250	94%		
		0-4.80	52	TRV-250S052ST		250	94%		
		0-4.62	54	TRV-250S054ST		250	94%		
		0-4.46	56	TRV-250S056ST		250	94%		
		0-4.16	60	TRV-250S060ST		250	94%		
		0-2.97	84	TRV-250S084ST		250	94%		
		0-2.38	105	TRV-250S105ST		250	94%		
		0-1.66	150	TRV-250S150ST		250	94%		

300W TRV Series



- Aluminum Case
- OA: 9.88" x 3.86" x 1.75"

300W TSV Series

- High Voltage 277-480V Input
- Aluminum Case
- OA: 9.88" x 3.69" x 1.75"

Constant Current or Voltage	Dimming	Output Current (mA) <i>(range if CV)</i>	Output Voltage (VDC) <i>(range if CC)</i>	Catalog Number	Nominal Input Voltage (Vac)	Max Output Power (Watts)	Efficiency	In Stock (typical)	SAM
V	No	0-22.90	12	TRV-300S012ST	100-277	275	91.5%		
		0-12.50	24	TRV-300S024ST		300	91%		
		0-10.71	28	TRV-300S028ST		300	91.5%		
		0-8.33	36	TRV-300S036ST		300	92%		
		0-6.25	48	TRV-300S048ST		300	94%		
		0-5.55	54	TRV-300S054ST		300	94%		
V	No	0-12.5	24	TSV-300S024ST	277-480	300	90%		
		0-10.7	28	TSV-300S028ST		300	91%		
		0-8.33	36	TSV-300S036ST		300	91%		
		0-6.25	48	TSV-300S048ST		300	91%		

SURGE PROTECTORS

TRP's most effective surge protectors are the most popular in this industry. They provide LED Drivers with an additional level of protection from dangerous powerline disturbances in industrial and commercial settings. Perfect for critical 24/7 applications.

- Protects Line-Ground, Line-Neutral & Neutral-Ground in accordance with IEEE / ANSI C62.41.2 guidelines
- High-temp, flameproof plastic enclosure with 85°C max surface rating
- Surge Location Rated Category C3
- Operate on AC or DC circuits

BSP3

- 10,000 Amp protection for 120 to 480V power
- 1.55" Ø x 2.82" Nom, three leads

BSP3 (LC)

- Same protection in low-cost, compact housing
- 1.55" Ø x 1.51" Nom, three leads

BSP3-20KA

- 20,000 Amp protection for 277V or 480V power
- Available "TN" option includes threaded nipple
- 1.55" Ø x 2.25" Nom, three leads
- CE Listed

FSP3-277-20KA

- Includes In-line fusing
- **Operating Indicator:** Green LED lights up to show unit is functioning. Unlit indicates unit needs replacing.
- NI option eliminates indicator
- At End-of-Life, turns off the fixture
- 20,000 Amp protection for 277V power
- 7.0 Amp maximum load
- 1.89" Ø x 2.95" Nom, four leads
- Patent Pending



EOL3-277-20KA

- Includes In-line fusing
- **End-of-Life Indicator:** Blue LED lights up when unit needs to be replaced.
- LED indicator flashes at "power-up" to confirm that LED is functional.
- At End-of-Life, turns off the fixture
- Two models:
 - L model includes local LED indicator
 - R model operates a remote-mounted LED indicator (*purchased separately*)
- 20,000 Amp protection for 277V power
- 7.0 Amp maximum load
- 1.89" Ø x 3.44" Nom, four leads
- Patent Pending



BSP3 Model	Max Mains Voltage	Max Clamping Voltage 8/20 μS @ 10kA	UL1449	UL935/ UL1029	Pulse Rating	
					Strikes	Surge
BSP3-120	120	600		✓	1	10,000 A
BSP3-208/240	240	1000		✓	2	6,500 A
BSP3-277	277	1500	✓	✓	10	3,000 A
BSP3-347	347	1900	✓	✓	100	1,500 A
BSP3-480	480	2500	✓	✓		

BSP3 (LC) Model	Max Mains Voltage	Max Clamping Voltage 8/20 μS @ 10kA	UL1449	UL935/ UL1029	Pulse Rating	
					Strikes	Surge
BSP3-120 (LC)	120	600		✓	1	10,000 A
BSP3-208/240(LC)	240	1000		✓	2	6,500 A
BSP3-277 (LC)	277	1500	✓	✓	10	3,000 A
BSP3-347 (LC)	347	1900	✓	✓	100	1,500 A
BSP3-480 (LC)	480	2500	✓	✓		

BSP3-20KA Model	Mains Voltage	Max Clamping Voltage 8/20 μS @ 20kA	UL1449 & CE	UL935/ UL1029	Pulse Rating	
					Strikes	Surge
BSP3-277-20KA	100-277	1600	✓	✓	1	20,000 A
BSP3-480-20KA	480	3000	✓	✓	2	15,000 A
					15	10,000 A
					120	3,000 A

FSP-277-20KA Model	Mains Voltage	Max Clamping Voltage 8/20 μS @ 20kA	UL1449 & CE	LED Indicator	Pulse Rating	
					Strikes	Surge
FSP3-277-20KA	100-277	2100	✓	Local	1	20,000 A
NEW! FSP3-277-20KA-NI	100-277	2100	✓	none	2	15,000 A
FSP3-480-20KA	480V	3800	✓	Local	15	10,000 A
NEW! FSP3-480-20KA-NI	480V	3800	✓	none	120	3,000 A

EOL3-277-20KA Model	Mains Voltage	Max Clamping Voltage 8/20 μS @ 20kA	UL1449 & CE	LED Indicator	Pulse Rating	
					Strikes	Surge
EOL3-277-20KA-L	277	1600	✓	Local	1	20,000 A
EOL3-480-20KA-R	480	1600	✓	Remote	2	15,000 A
EOL3-LED-18-B	LED (blue) assembly with 18" leads				15	10,000 A
					120	3,000 A

STEP-DIMMING MODULES

Use two standard wall switches for quick switching between light levels. Eliminates the need for dimming switches. Works with occupancy sensors. IP66, Compatible with TRP 0-10V dimmable LED drivers. 3.35" x 1.42" x 0.75"



Model	Output Levels	Max Pass Current	LED Driver Max Power	Insertion Loss
SD2	50-100%	1.0 A	100W	<1.5W
SD3-25	25-50-100%	1.0 A	100W	<1.5W
SD3-33	33-66-100%	1.0 A	100W	<1.5W

STEP-DOWN TRANSFORMERS

Allow 100-277V LED drivers to run on 347-480V mains. Also for Electronic Fluorescent & HID Ballasts.



Model Number	Input	Output	VA Rating	Dimensions
480:347:277-125VA	347-480V	277V	125	3.74" x 2.56" x 2.36"
480:347:277:220-245VA	347-480V	277V & 220V	245	3.39" x 3.07" x 3.34"
480:347:277-460VA	347-480V	277V	460	3.82" x 3.34" x 3.74"



SSL Solutions Faster Than The Speed Of Light...

Thomas Research Products is a global supplier of advanced energy-saving electronic lighting components, focused on continuous innovation. We design, manufacture and supply power solutions and accessories for solid state lighting. Founded in 1997, we operate from headquarters in Elgin, Illinois USA.

- Our **LED Driver** product line is one of the most comprehensive in North America. TRP designs are optimized for quality, efficiency, longevity, and cost-competitiveness.
- Our **DC Light Engine Modules** and **AC LED Light Engines** simplify system development for OEMs.
- Our **Surge Protectors** provide the most popular, cost-effective protection for outdoor luminaires in the industry.
- Our energy-saving electronic **Lighting Controls** include wireless controls, daylighting controls, step-dimming controls, occupancy sensors and step-down transformers. Optimized for use with LED lighting, most of these also work with commercial fluorescent and HID lighting, in indoor and outdoor applications.

We take pride in providing both superior standard products and custom options, tailored to customers' needs. The company is committed to providing superior quality and technology, along with superior service, to both OEM customers and replacement parts channels.

Customized LED Drivers

We solve problems and create unique products to meet customer applications. Contact us for details.

Designs include:

- **"Tuned" Output Drivers**
Many TRP constant-current drivers can be factory-set to a specific current, for **less cost than programmables**
- **Multi-channel Drivers**
Multiple output high-wattage drivers can be used to avoid connecting multiple LED arrays in parallel, which can lead to "current hogging"

Total Custom Solutions

Contact us for custom services:

- Custom LED Light Engine design, AC or DC
- Custom LED Driver design
- Electrical, Optical & Thermal design
- Rapid prototyping
- Fully-equipped development and testing labs
- Automated cleanroom manufacturing: class 100,000
- COB production and SMT assembly