

## Excellent Integrated System Limited

Stocking Distributor

Click to view price, real time Inventory, Delivery & Lifecycle Information:

[M/A-Com Technology Solutions](#)

[MAAP-015030-DIEEV1](#)

For any questions, you can email us directly:

[sales@integrated-circuit.com](mailto:sales@integrated-circuit.com)

# MAAP-015030



**Power Amplifier, 13 W**  
**8.5 - 11.75 GHz**

Rev. V4

## Features

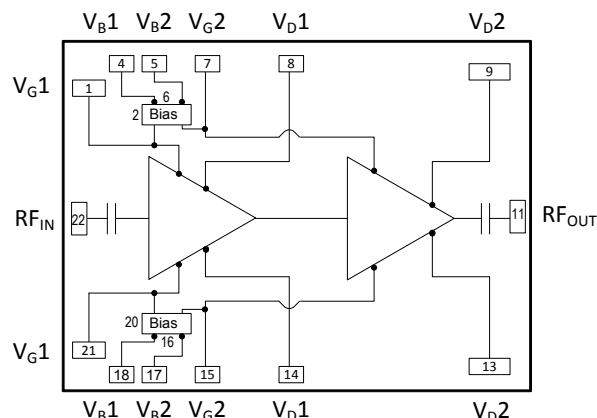
- 12 W X-Band Power Amplifier
- 21 dB Large Signal Gain
- 41 dBm Saturated Pulsed Output Power
- 40% Power Added Efficiency
- On Chip Gate Bias Circuit
- 100% On-wafer DC & RF Power Tested
- 100% Visual Inspection to MIL-STD-833
- Bare Die

## Description

The MAAP-015030 two stage 8.5 - 11.75 GHz GaAs MMIC power amplifier has a saturated pulsed output power of 41 dBm and a large signal gain of 21 dB. The power amplifier can be biased using a direct gate voltage or using an on chip gate bias circuit.

This device is well suited for communication and radar applications.

## Functional Schematic



## Pad Configuration

Pad No.	Function	Pad No.	Function
1	V <sub>G1</sub>	12	GND
2	Bias Circuit GND	13	V <sub>D2</sub>
3	No Connection	14	V <sub>D1</sub>
4	V <sub>B1</sub>	15	V <sub>G2</sub>
5	V <sub>B2</sub>	16	Bias Circuit GND
6	Bias Circuit GND	17	V <sub>B2</sub>
7	V <sub>G2</sub>	18	V <sub>B1</sub>
8	V <sub>D1</sub>	19	GND
9	V <sub>D2</sub>	20	Bias Circuit GND
10	GND	21	V <sub>G1</sub>
11	RF <sub>OUT</sub>	22	RF <sub>IN</sub>

## Ordering Information

Part Number	Package
MAAP-015030-DIE	Die in Vacuum release gel pack
MAAP-015030-DIEEV1	Direct gate bias sample board
MAAP-015030-DIEEV2	On chip gate bias sample board

\* Restrictions on Hazardous Substances, European Union Directive 2011/65/EU.

# MAAP-015030



**Power Amplifier, 13 W**  
**8.5 - 11.75 GHz**

Rev. V4

## Electrical Specifications:

Freq. = 8.5 - 11.5 GHz,  $T_A = +25^\circ\text{C}$ , Duty Cycle = 5%,  $P_{IN} = 20\text{ dBm}$ ,  $V_G = -0.9\text{ V}$

Parameter	Units	Min.	Typ.	Max.
Gain (Large Signal) (8.5 - 11.5 GHz)	dB	20	21	—
Gain (Large Signal) (11.5 - 11.75 GHz)	dB	19		
Gain	dB	—	25	—
Gain Flatness	dB	—	1	—
Input Return Loss	dB	—	12	—
Output Return Loss	dB	—	10	—
Saturated Output Power (8.5 - 11.5 GHz)	dBm	40	41	—
Saturated Output Power (11.5 - 11.75 GHz)	dBm	39		
Power Added Efficiency	%			
8.5 - 9.0 GHz		—	35	—
9.0 - 10.0 GHz			40	
10.0 - 11.75 GHz			40	
Drain Bias Voltage	V	—	8.0	—
Drain Current	A	—	5	5.5

## Absolute Maximum Ratings<sup>1,2</sup>

Parameter	Absolute Maximum
Input Power	+23 dBm
Drain Voltage	+8.5 V
Gate Voltage	-2.0 V < $V_G$ < -0.7 V
Bias Voltage	-6.5 V < $V_B$ < -4.5 V
Drain Current	< 6.0 A
Gate Current	< 30 mA
Operating Temperature	-40°C to +85°C
Junction Temperature <sup>3,4</sup>	+175°C

- Exceeding any one or combination of these limits may cause permanent damage to this device.
- MACOM does not recommend sustained operation near these survivability limits.
- Operating at nominal conditions with  $T_J \leq +175^\circ\text{C}$  will ensure MTTF >  $1 \times 10^6$  hours.
- Junction Temperature ( $T_J$ ) =  $T_A + \Theta_{jc} \cdot (V \cdot I)$   
 Typical thermal resistance ( $\Theta_{jc}$ ) = 5.7°C/W.  
 a) For  $T_A = 25^\circ\text{C}$ ,  
 $T_J = 175^\circ\text{C}$  @ 8 V, 3.29 A  
 b) For  $T_A = 85^\circ\text{C}$ ,  
 $T_J = 175^\circ\text{C}$  @ 8 V, 1.97 A

## Handling Procedures

Please observe the following precautions to avoid damage:

## Static Sensitivity

Gallium Arsenide Integrated Circuits are sensitive to electrostatic discharge (ESD) and can be damaged by static electricity. Proper ESD control techniques should be used when handling these devices.

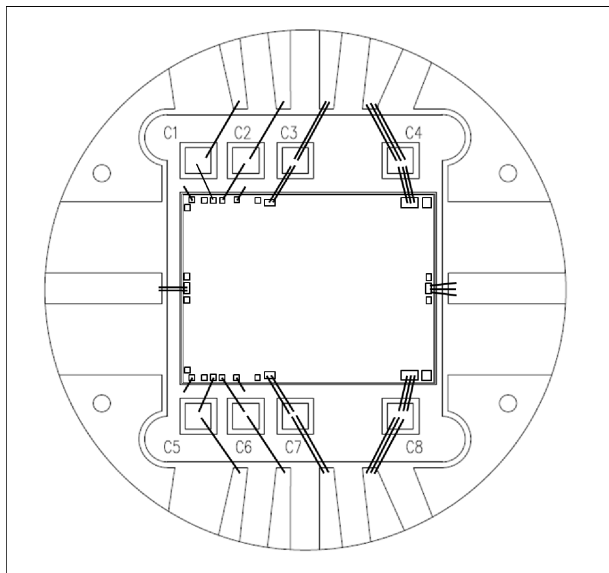
# MAAP-015030



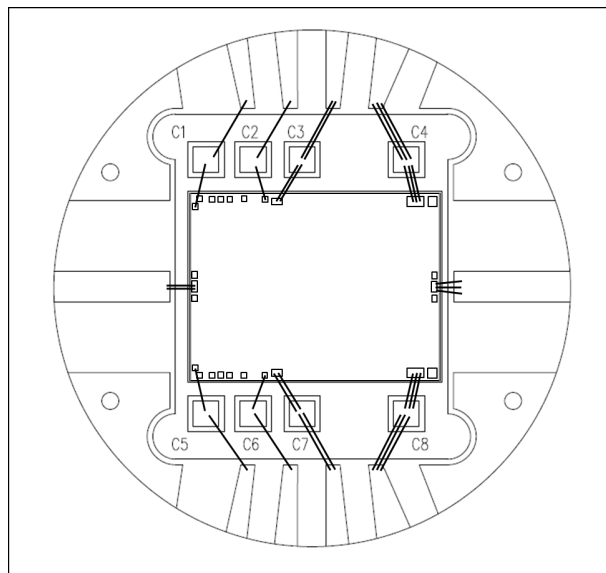
**Power Amplifier, 13 W**  
**8.5 - 11.75 GHz**

Rev. V4

**Bonding Diagram - On Chip Bias<sup>5</sup>**

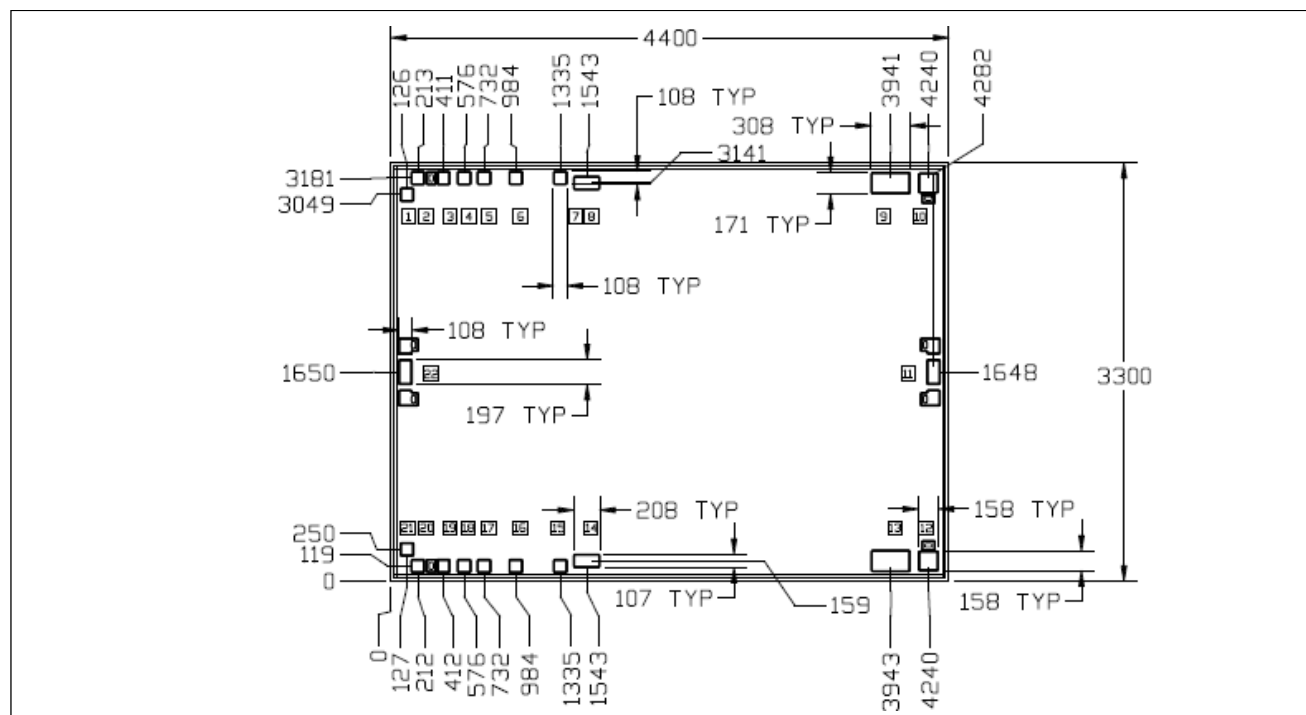


**Bonding Diagram - Direct Gate Bias<sup>5</sup>**



5. Components C1 - C8 are all 100 pF chips.

## MMIC Bare Die



# MAAP-015030

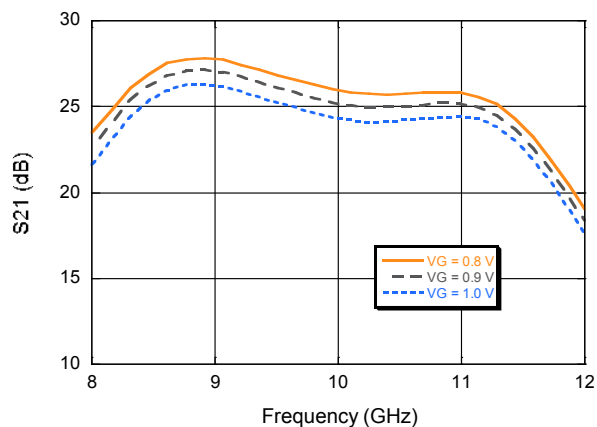


**Power Amplifier, 13 W**  
**8.5 - 11.75 GHz**

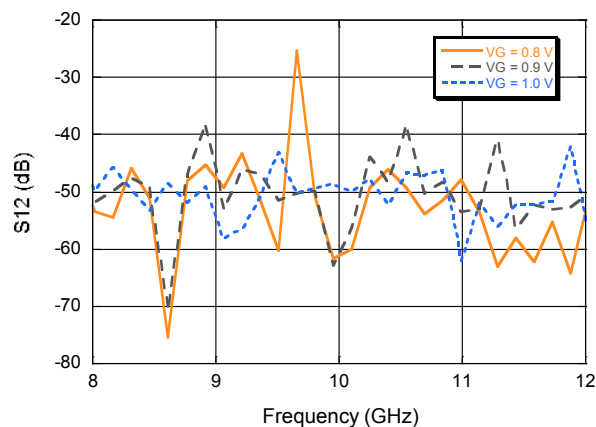
Rev. V4

## Typical Performance Curves over Voltage

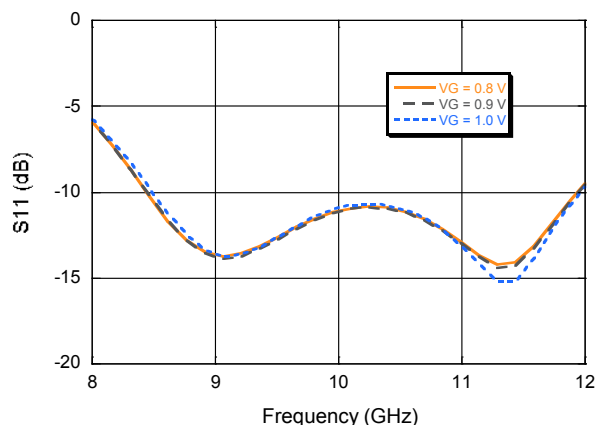
**Gain vs. Frequency**



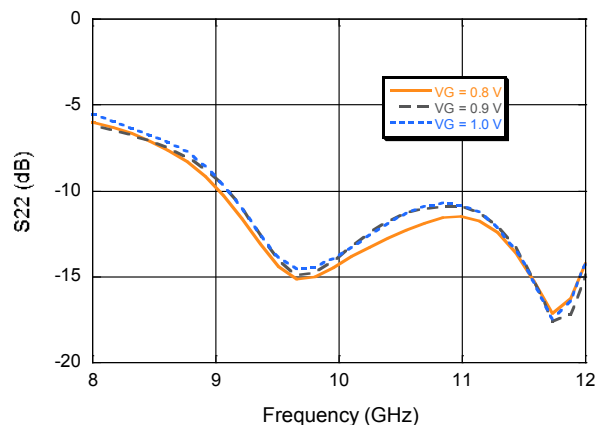
**Reverse Isolation vs. Frequency**



**Input Return Loss vs. Frequency**



**Output Return Loss vs. Frequency**



# MAAP-015030

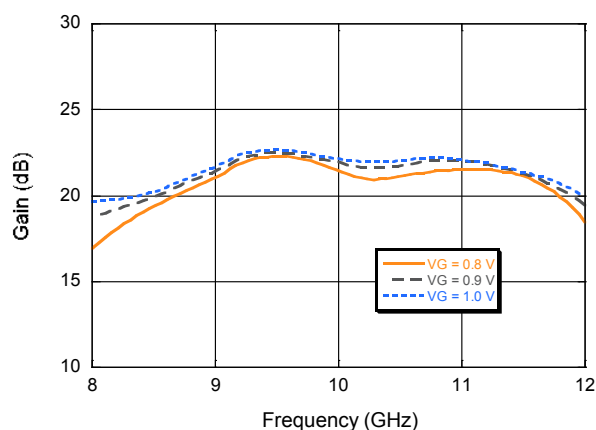


**Power Amplifier, 13 W**  
**8.5 - 11.75 GHz**

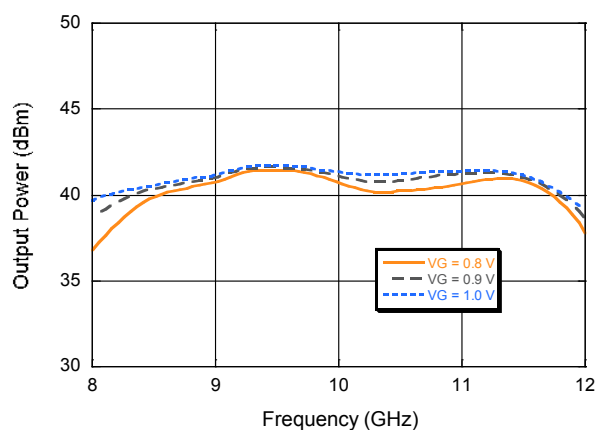
Rev. V4

## Typical Performance Curves over Voltage

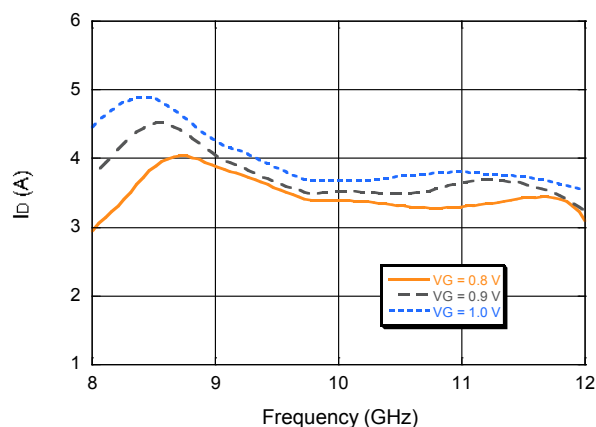
**Gain vs. Frequency**



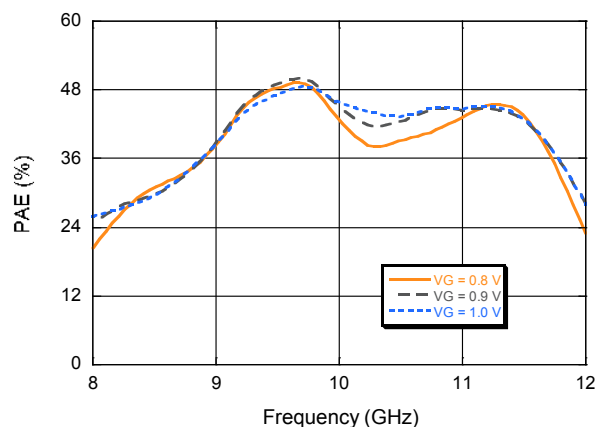
**Output Power vs. Frequency**



**Drain Current vs. Frequency**



**PAE vs. Frequency**



# MAAP-015030

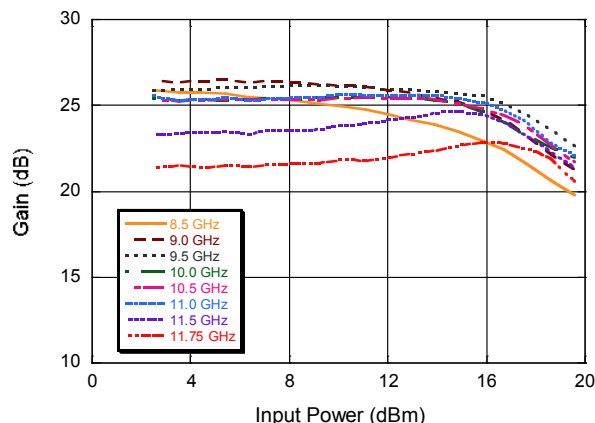


**Power Amplifier, 13 W**  
**8.5 - 11.75 GHz**

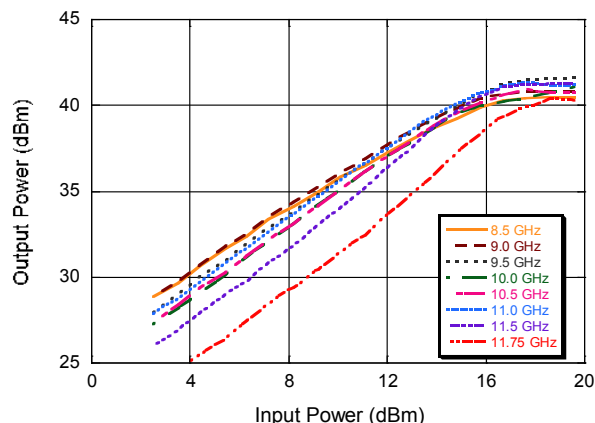
Rev. V4

## Typical Performance Curves over Frequency

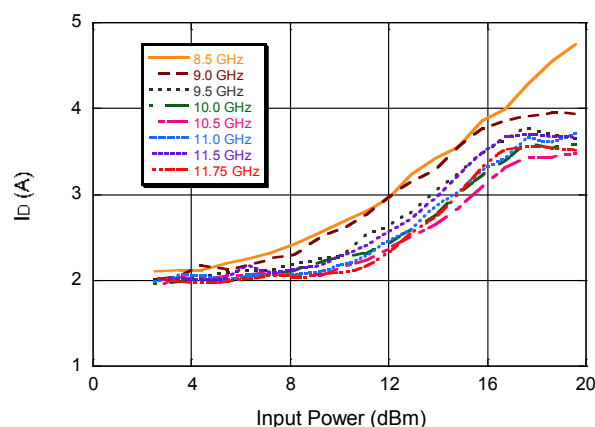
**Gain vs. Input Power**



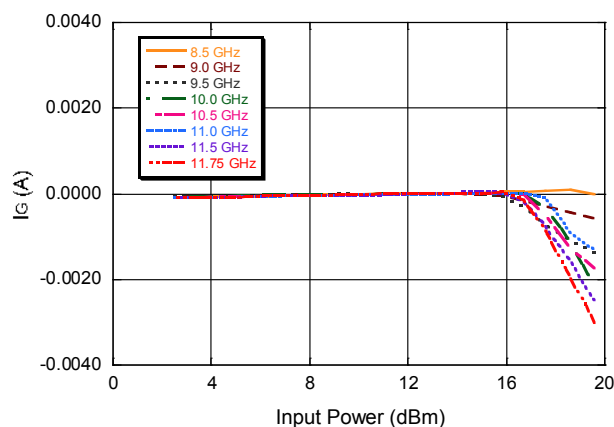
**Output Power vs. Input Power**



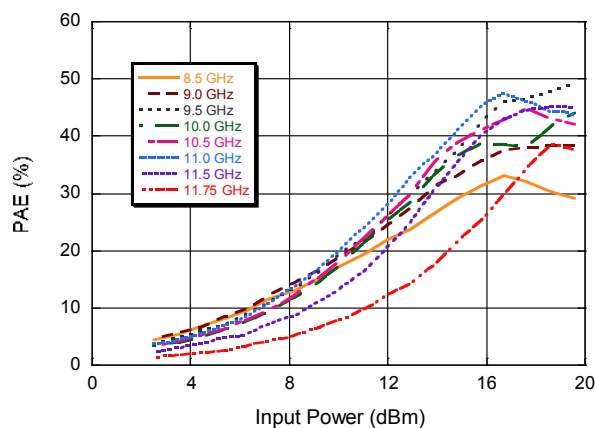
**Drain Current vs. Input Power**



**Gate Current vs. Input Power**



**PAE vs. Input Power**



# MAAP-015030

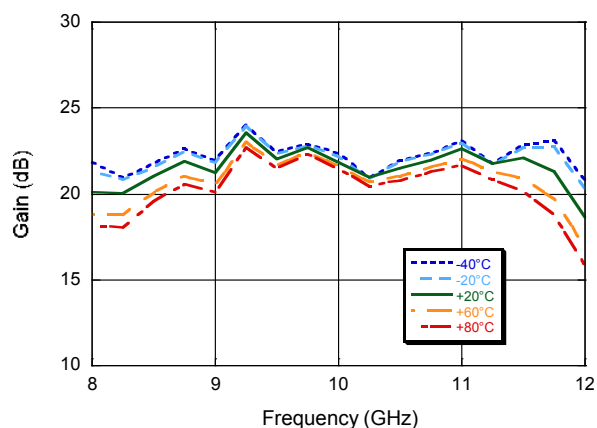


**Power Amplifier, 13 W**  
**8.5 - 11.75 GHz**

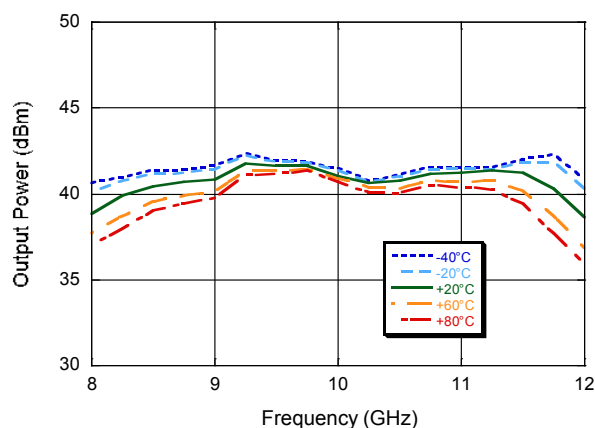
Rev. V4

**Typical Performance Curves over Temperature:  $P_{IN} = 19.5$  dBm**

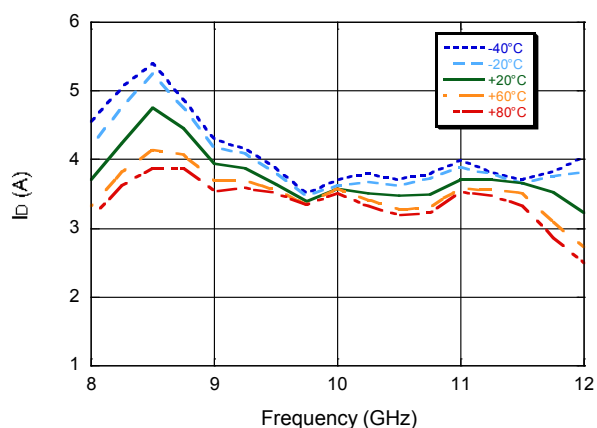
**Gain vs. Frequency**



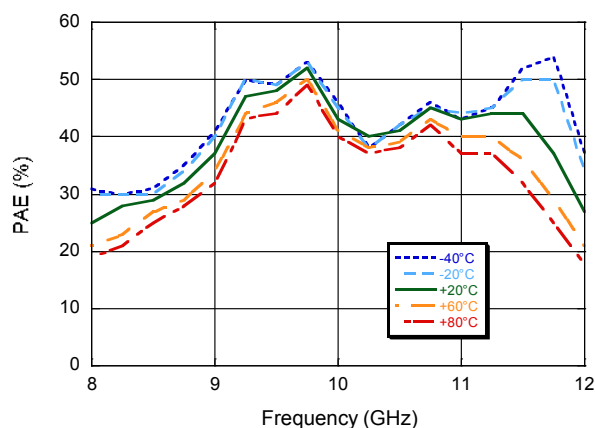
**Output Power vs. Frequency**



**Drain Current vs. Frequency**



**PAE vs. Frequency**





# MAAP-015030

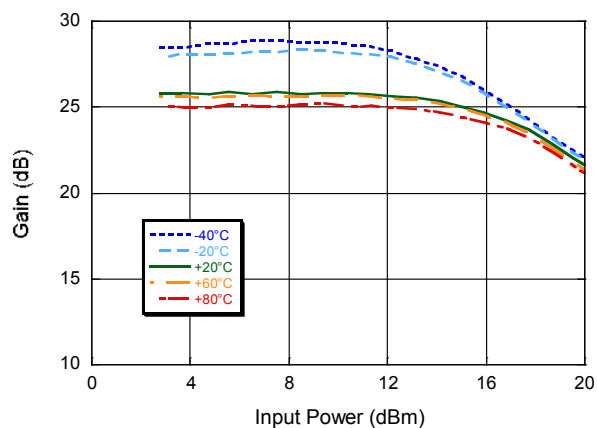


**Power Amplifier, 13 W**  
**8.5 - 11.75 GHz**

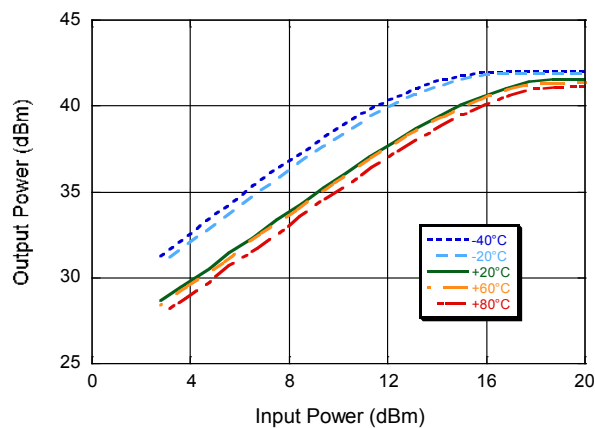
Rev. V4

## Typical Performance Curves over Temperature

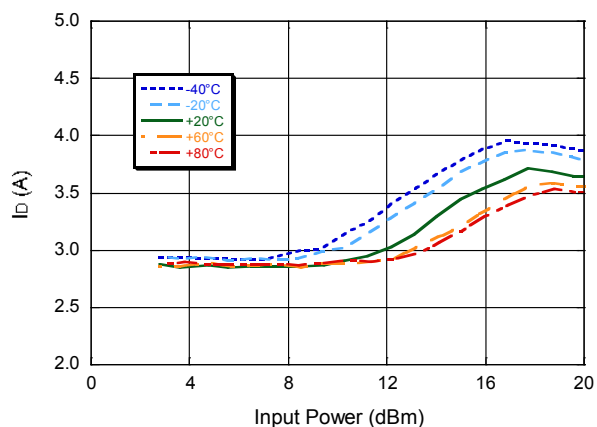
**Gain vs. Input Power**



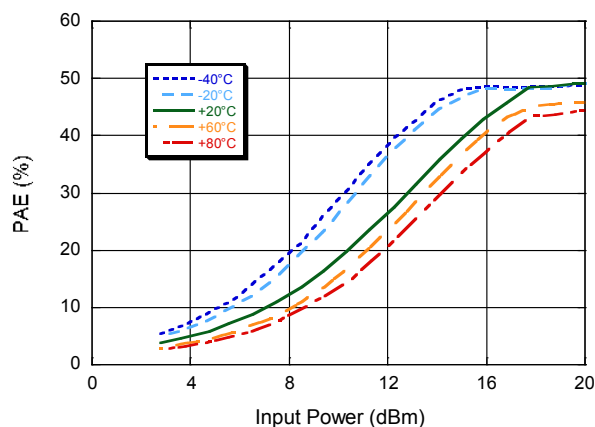
**Output Power vs. Input Power**



**Drain Current vs. Input Power**



**PAE vs. Input Power**



# MAAP-015030



Power Amplifier, 13 W  
8.5 - 11.75 GHz

Rev. V4

## Applications Section

### Application Notes

#### Note 1 - Biasing

The gate biasing is applied in one of the following:

1. Direct Gate Bias:-  $V_{G1}$  &  $V_{G2}$  provide the direct gate bias input to the 2 MMIC stages. This method of biasing allows the user to control the total drain current without the scaling factor provided by the bias circuit. It is recommended that the gate voltage is supplied by both sides of the Die. Optimum performance can be achieved with a -0.9 V operation.
2. Bias Circuit Biasing:- Applying -5V to  $V_{B1}$  &  $V_{B2}$  will typically draw 2A with no further adjustment necessary. Wafer lot variation may result in some devices experiencing higher or lower drain currents than the typical 2 A. It is necessary to connect the Bias Circuit Ground (Pad 2,6,16,20) to ground in order for this bias circuit to function correctly. It is recommended that the bias circuits on both sides of the PA are used.

#### Note 2 - Bias Sequence

When switching on the PA, In each case, the gate bias must be applied before the drain voltage is applied. Both the  $V_{D1}$  and  $V_{D2}$  should be biased from the top and bottom sides of the die.

#### Note 3 - Decoupling Circuits

Each bias pad,  $V_G$  or  $V_B$  and the  $V_{D1}$ ,  $V_{D2}$  must have a decoupling capacitor of 100 pF as close to the device as possible, as is shown in the bonding diagrams. In the case where the bias circuit is used the additional bond wire to ground must be made as short as possible.

#### Note 4 - Pulse Operation

The performance of the MAAP-015030-BD is characterized under pulsed conditions with a duty cycle of 5% consisting of a pulse width of 5  $\mu$ s applied to the drain. Under pulsed conditions the gate is constantly biased using either the on chip bias circuit or using a gate voltage directly applied to the PA. It is recommended that the die is mounted with an adequate thermal solution.

#### Note 5 - CW Operation

The PA is only recommended for CW operation at reduced drain voltages.

# MAAP-015030



**Power Amplifier, 13 W**  
**8.5 - 11.75 GHz**

Rev. V4

## Applications Section

### Handling and Assembly

#### Die Attachment

This product is 0.100 mm (0.004") thick and has vias through to the backside to enable grounding to the circuit. Microstrip substrates should be brought as close to the die as possible. The mounting surface should be clean and flat. If using conductive epoxy, recommended epoxies are Tanaka TS3332LD, Die Mat DM6030HK or DM6030HK-Pt cured in a nitrogen atmosphere per manufacturer's cure schedule. Apply epoxy sparingly to avoid getting any on to the top surface of the die. An epoxy fillet should be visible around the total die periphery. For additional information please see the MACOM "Epoxy Specifications for Bare Die" application note. If eutectic mounting is preferred, then a flux-less gold-tin (AuSn) preform, approximately 0.0012 thick, placed between the die and the attachment surface should be used. A die bonder that utilizes a heated collet and provides scrubbing action to ensure total wetting to prevent void formation in a nitrogen atmosphere is recommended. The gold-tin eutectic (80% Au 20% Sn) has a melting point of approximately 280°C (Note: Gold Germanium should be avoided). The work station temperature should be 310°C +/- 10°C. Exposure to these extreme temperatures should be kept to minimum. The collet should be heated, and the die pre-heated to avoid excessive thermal shock. Avoidance of air bridges and force impact are critical during placement.

#### Wire Bonding

Windows in the surface passivation above the bond pads are provided to allow wire bonding to the die's gold bond pads. The recommended wire bonding procedure uses 0.076 mm x 0.013 mm (0.003" x 0.0005") 99.99% pure gold ribbon with 0.5-2% elongation to minimize RF port bond inductance. Gold 0.025 mm (0.001") diameter wedge or ball bonds are acceptable for DC Bias connections. Aluminium wire should be avoided. Thermo-compression bonding is recommended though thermo-sonic bonding may be used providing the ultrasonic content of the bond is minimized. Bond force, time and ultrasonic's are all critical parameters. Bonds should be made from the bond pads on the die to the package or substrate. All bonds should be as short as possible.

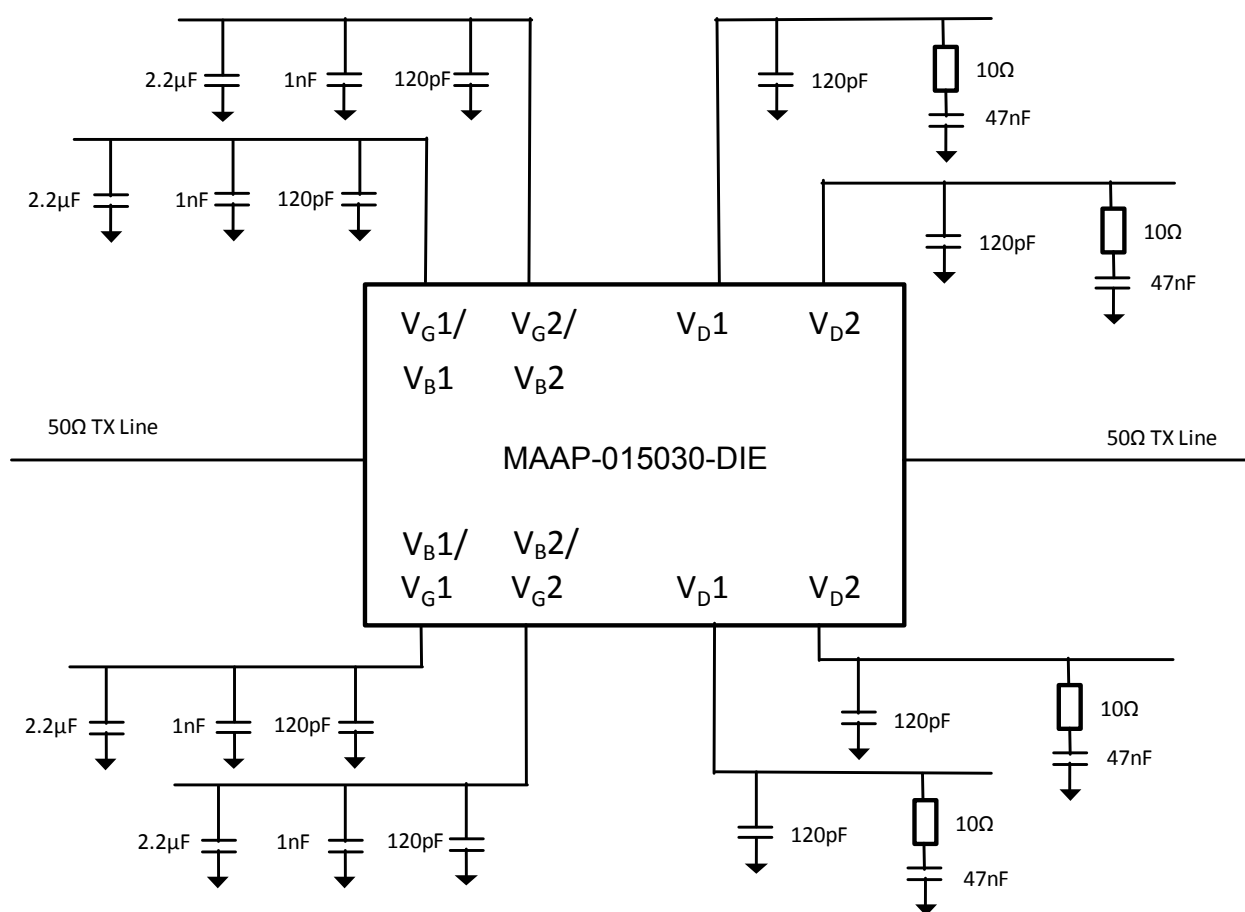
# MAAP-015030



**Power Amplifier, 13 W**  
**8.5 - 11.75 GHz**

Rev. V4

## Application Circuit



# MAAP-015030



**Power Amplifier, 13 W**  
**8.5 - 11.75 GHz**

Rev. V4

M/A-COM Technology Solutions Inc. All rights reserved.

Information in this document is provided in connection with M/A-COM Technology Solutions Inc ("MACOM") products. These materials are provided by MACOM as a service to its customers and may be used for informational purposes only. Except as provided in MACOM's Terms and Conditions of Sale for such products or in any separate agreement related to this document, MACOM assumes no liability whatsoever. MACOM assumes no responsibility for errors or omissions in these materials. MACOM may make changes to specifications and product descriptions at any time, without notice. MACOM makes no commitment to update the information and shall have no responsibility whatsoever for conflicts or incompatibilities arising from future changes to its specifications and product descriptions. No license, express or implied, by estoppels or otherwise, to any intellectual property rights is granted by this document.

THESE MATERIALS ARE PROVIDED "AS IS" WITHOUT WARRANTY OF ANY KIND, EITHER EXPRESS OR IMPLIED, RELATING TO SALE AND/OR USE OF MACOM PRODUCTS INCLUDING LIABILITY OR WARRANTIES RELATING TO FITNESS FOR A PARTICULAR PURPOSE, CONSEQUENTIAL OR INCIDENTAL DAMAGES, MERCHANTABILITY, OR INFRINGEMENT OF ANY PATENT, COPYRIGHT OR OTHER INTELLECTUAL PROPERTY RIGHT. MACOM FURTHER DOES NOT WARRANT THE ACCURACY OR COMPLETENESS OF THE INFORMATION, TEXT, GRAPHICS OR OTHER ITEMS CONTAINED WITHIN THESE MATERIALS. MACOM SHALL NOT BE LIABLE FOR ANY SPECIAL, INDIRECT, INCIDENTAL, OR CONSEQUENTIAL DAMAGES, INCLUDING WITHOUT LIMITATION, LOST REVENUES OR LOST PROFITS, WHICH MAY RESULT FROM THE USE OF THESE MATERIALS.

MACOM products are not intended for use in medical, lifesaving or life sustaining applications. MACOM customers using or selling MACOM products for use in such applications do so at their own risk and agree to fully indemnify MACOM for any damages resulting from such improper use or sale.