

Excellent Integrated System Limited

Stocking Distributor

Click to view price, real time Inventory, Delivery & Lifecycle Information:

[Molex Connector Corporation](#)
[85506-0001](#)

For any questions, you can email us directly:
sales@integrated-circuit.com

NOTES :

1- MATERIAL:

-HOUSING: POLYESTER FIBER GLASS FILLED UL 94-V0
COLOR BLACK.

-TERMINAL: PHOSPHOR BRONZE.

PLATING :

POST PLATE 0.00127-0.00152/.000050-.000060 GOLD IN CONTACT AREA , 0.00190/.000075 MIN. PURE TIN IN TAIL AREA BOTH OVER 0.00127/.000050 MIN NICKEL OVERALL.

2- JACK FOR MATING WITH F.C.C. 68 PLUGS (90075 MOLEX SERIES).

3- PRODUCT SPECIFICATION PS-95003 AND PS-85505 (SECTION 5.2).

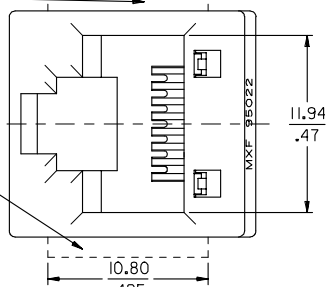
4- APPLICATION SPECIFICATION AS-95001.

5- PACKAGING SPECIFICATION PK-95022 (TRAY PACKAGING).

6- EXCEEDS CATEGORY 5E PERFORMANCE.

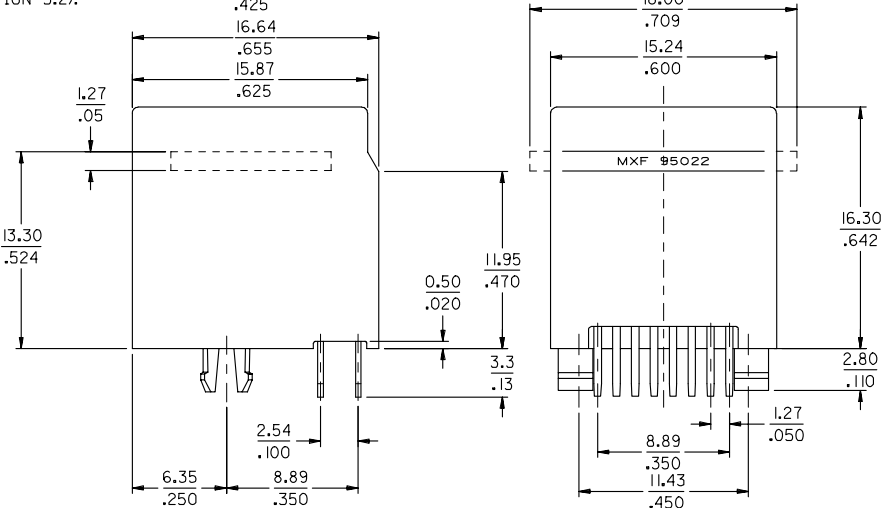
7- PC BOARD THICKNESS: 1.57/.062

OPTIONAL RIBS

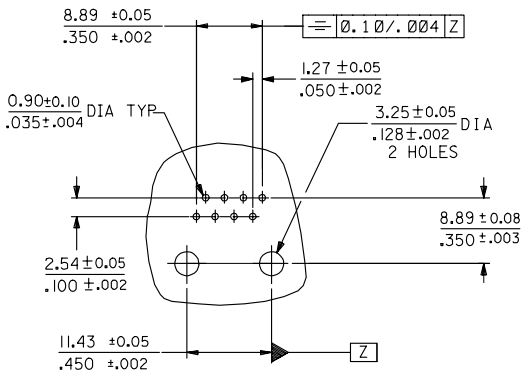


JACK WITH RIBS
MATERIAL NR.: 85506-0001

JACK WITHOUT RIBS
MATERIAL NR.: 85506-0002



P.C.B. MOUNTING PATTERN
(see from component side)



ENTER DESCRIPTION EC NO: MG2005-0147 DRAWING: SEBASTI 2004/10/21 CHK'D: CARABET 2004/10/22 APPR: KNOLLER 2004/11/04	QUALITY SYMBOLS ▽=0 ▽=0	GENERAL TOLERANCES (UNLESS SPECIFIED)		DIMENSION STYLE MM/IN	SCALE 4:1	DESIGN UNITS METRIC	THIRD ANGLE PROJECTION		
		4 PLACES ± --- ± --- 3 PLACES ± --- ± .006 2 PLACES ± 0.15 ± .010 1 PLACE ± 0.25 ± ---	mm INCH --- --- --- --- --- --- --- ---	DRAWN BY FB	DATE 98/02/25	TITLE HIGH SPEED MODULAR JACK HIGH PROFILE TOP ENTRY THROUGH HOLE 8 CIRCUIT			
		ANGULAR ± 2 °		CHECKED BY ---	DATE ---	MOLEX INCORPORATED			
		DRAFT WHERE APPLICABLE MUST REMAIN WITHIN DIMENSIONS		APPROVED BY ---	DATE ---	MATERIAL NO. SEE CHART	DOCUMENT NO. SD-85506-001	SHEET NO. 1 OF 1	