

Excellent Integrated System Limited

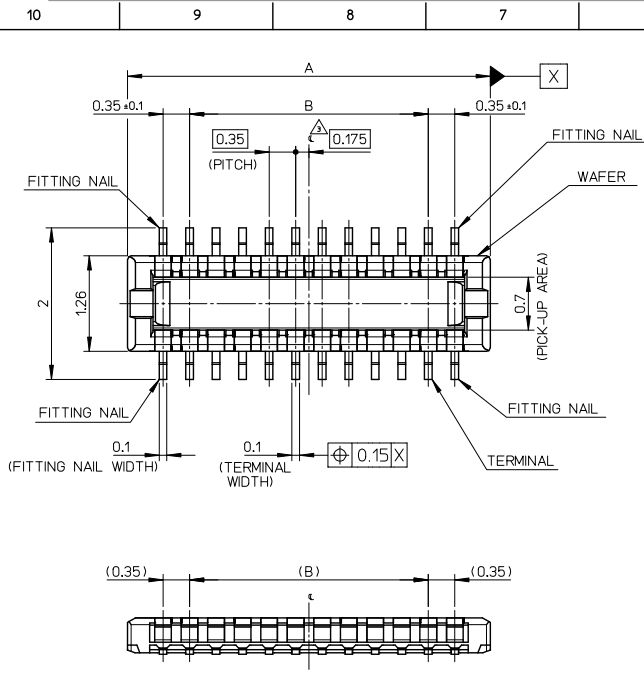
Stocking Distributor

Click to view price, real time Inventory, Delivery & Lifecycle Information:

[Molex Connector Corporation](#)
[5046222010](#)

For any questions, you can email us directly:

sales@integrated-circuit.com



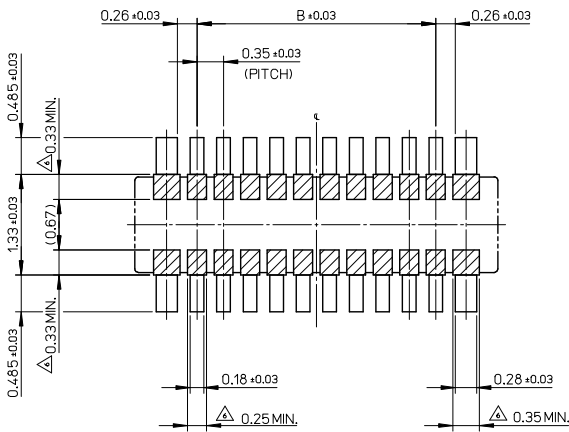
| | | | | | |
|-----------|-------|--|----------------|---------------|---------|
| 11.90 | 13.54 | 504622-7010 | o | --- | 70 |
| 10.85 | 12.49 | 504622-6410 | o | --- | 64 |
| 10.15 | 11.79 | 504622-6010 | o | --- | 60 |
| 9.80 | 11.44 | 504622-5810 | --- | --- | 58 |
| 9.10 | 10.74 | 504622-5410 | --- | --- | 54 |
| 8.40 | 10.04 | 504622-5010 | o | --- | 50 |
| 8.05 | 9.69 | 504622-4810 | --- | --- | 48 |
| 7.00 | 8.64 | 504622-4210 | --- | --- | 42 |
| 6.65 | 8.29 | 504622-4010 | o | --- | 40 |
| 6.30 | 7.94 | 504622-3810 | --- | --- | 38 |
| 5.60 | 7.24 | 504622-3410 | o | --- | 34 |
| 4.90 | 6.54 | 504622-3010 | o | --- | 30 |
| 3.85 | 5.49 | 504622-2410 | o | --- | 24 |
| 3.15 | 4.79 | 504622-2010 | o | --- | 20 |
| 2.80 | 4.44 | 504622-1810 | --- | --- | 18 |
| 2.45 | 4.09 | 504622-1610 | --- | --- | 16 |
| 1.75 | 3.39 | 504622-1210 | --- | --- | 12 |
| 1.40 | 3.04 | 504622-1010 | o | --- | 10 |
| 0.70 | 2.34 | 504622-0610 | --- | --- | 6 |
| B | A | EMBOSSED TAPE PACKAGE | HIGH VOL. TOOL | LOW VOL. TOOL | CIRCUIT |
| ORDER NO. | | SAMPLE PREPARATION o : TOOLED Δ : WORK IN PROCESS --- : TOOLING TO BE CONFIRMED | | | |

NOTES

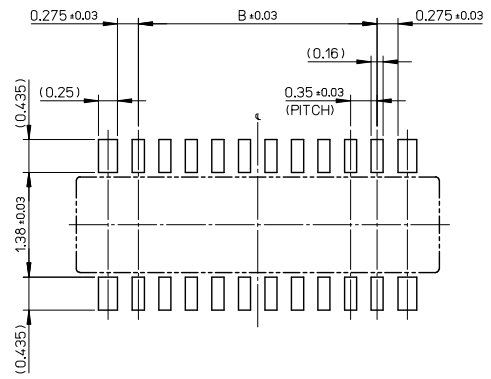
- MATERIAL
WAFER : LIQUID CRYSTAL POLYMER UL94V-0(COLOR : BLACK)
PIN : COPPER ALLOY
FITTING NAIL : COPPER ALLOY
- PLATING
TERMINAL
GOLD
UNDER PLATING : NICKEL
*DIVIDE INTO PARTS THE GOLD PLATING OF THE CONTACT AND THE TAIL PART BY THE NICKEL PLATING.
FITTING NAIL
GOLD
UNDER PLATING : NICKEL
- APPLY FOR (CIRCUIT/2)→EVEN.
- MATE WITH : 504618-**10
- TAIL AND FITTING NAIL COPLANARITY TO BE 0.08MAXIMUM.
- PROHIBITED AREA OF PATTERN WIRING AND SOLDER.
(FOR EACH AREA, THE WIRING THAT TOUCHES ON THE SOLDER CAN BE ATTACHED, THEN COVERED WITH A FILM TO KEEP SOLDER OUT.)
- ELV and RoHS COMPLIANT.
- ELECTRIC SPEC OF FITTING NAIL IS NOT GUARANTEED WHEN MATED.

| | | | | | | | | | | | | | |
|---|--|-------------|--|--|--|-----------------------|--|-----------------|--|--------------|--|------------------------------------|--|
| REVISED | | DESCRIPTION | | GENERAL TOLERANCES (UNLESS SPECIFIED) | | DIMENSION STYLE | | SCALE | | DESIGN UNITS | | THIRD ANGLE PROJECTION | |
| IEC NO. J2015-0816 | | 2014/12/16 | | 10 UNDER ± 0.2 | | MM ONLY | | 20:1 | | METRIC | | CIRCUIT | |
| TIDRANWOSHIDA | | 2014/12/16 | | 10 OVER 30 UNDER ± 0.25 | | DRAWN BY HONO01 | | DATE 2014/02/24 | | TITLE | | 0.35 BB CONN. H=0.6 SSB6 PLUG ASSY | |
| CHIKDARTAKEUCHI | | 2014/12/16 | | 30 OVER ± 0.3 | | CHECKED BY RTAKEUCHI | | DATE 2014/02/24 | | | | | |
| APPR:KMORIKAWA | | 2014/12/17 | | ANGULAR ± 1 ° | | APPROVED BY KMORIKAWA | | DATE 2014/04/17 | | DOCUMENT NO. | | SHEET NO. 1 OF 2 | |
| REV | | | | DRAFT WHERE APPLICABLE MUST REMAIN WITHIN DIMENSIONS | | MATERIAL NO. | | SEE CHART | | | | | |
| THIS DRAWING CONTAINS INFORMATION THAT IS PROPRIETARY TO MOLEX INCORPORATED AND SHOULD NOT BE USED WITHOUT WRITTEN PERMISSION | | | | | | | | | | | | | |

10 9 8 7 6 5 4 3 2 1

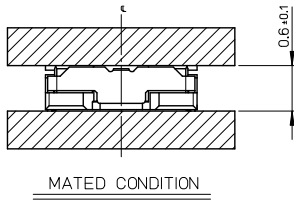


RECOMMENDED P.W.BOARD PATTERN LAYOUT(REFERENCE)



RECOMMENDED METAL MASK LAYOUT(REFERENCE)

RECOMMENDED THICKNESS OF METAL MASK : t=0.08mm
RECOMMENDED OPEN APERTURE RATIO OF METAL MASK : 80%

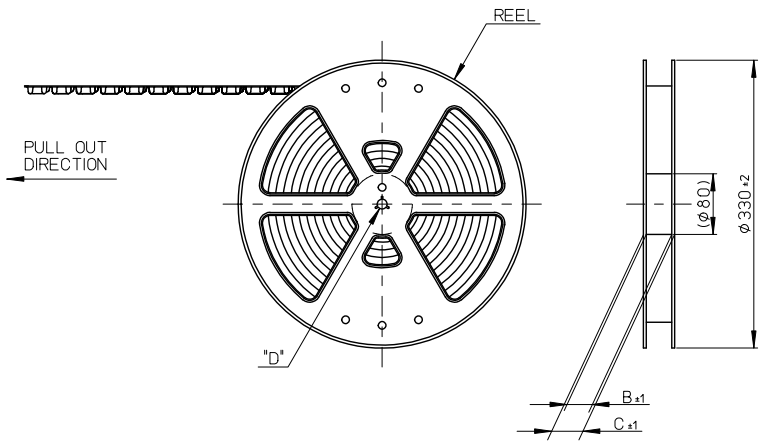


MATED CONDITION

| | | | | | | | |
|--|---------------------------------------|--------------|----------------------------|--------------------|--|------------------------|------------------------|
| REVISED EC NO: J2015-0816 DRAWN BY: YOSHIDA 2014/12/16 CHECKED BY: CHIKDRTAKEUCHI 2014/12/16 APPROVED BY: KMORIKAWA 2014/12/17 | GENERAL TOLERANCES (UNLESS SPECIFIED) | | DIMENSION STYLE MM ONLY | | SCALE 20:1 | DESIGN UNITS METRIC | THIRD ANGLE PROJECTION |
| | 10 UNDER | ± 0.2 | DRAWN BY HONO01 | DATE 2014/02/24 | TITLE 0.35 BB CONN. H=0.6 SSB6 PLUG ASSY | | |
| | 10 OVER 30 UNDER | ± 0.25 | CHECKED BY RTAKEUCHI | DATE 2014/02/24 | | | |
| | 30 OVER | ± 0.3 | APPROVED BY KMORIKAWA | DATE 2014/04/17 | | | |
| ANGULAR ±1 ° | | MATERIAL NO. | | DOCUMENT NO. | | SHEET NO. | |
| DRAFT WHERE APPLICABLE MUST REMAIN WITHIN DIMENSIONS | | SEE SHEET 1 | | SD-504622-001 | | 2 OF 2 | |
| <small>THIS DRAWING CONTAINS INFORMATION THAT IS PROPRIETARY TO MOLEX INCORPORATED AND SHOULD NOT BE USED WITHOUT WRITTEN PERMISSION</small> | | | | | | | |

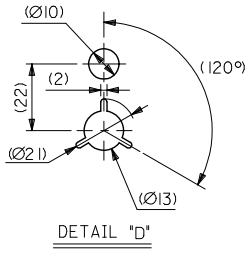
9 8 7 6 5 4 3 2

10 9 8 7 6 5 4 3 2 1



NOTES

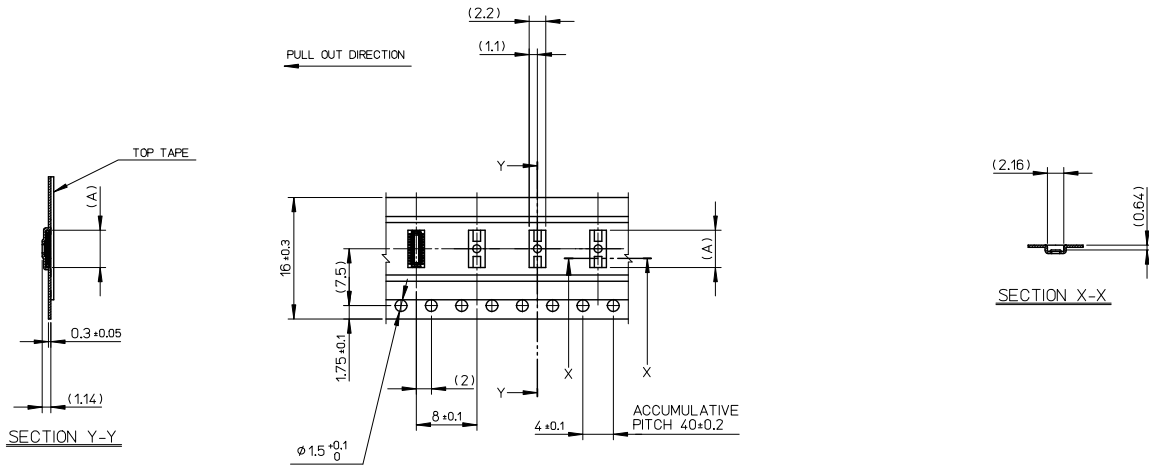
1. RE DETAILED DIMENSION, SEE PRODUCT DRAWING.
2. NUMBER OF CONNECTORS : 3000PCS/REEL
3. LEAD TAPE LENGTH
4. TOP TAPE PEEL FORCE IS DEFINED BY IEC60286-3.
5. MATERIAL
 CARRIER TAPE : POLYSTYRENE
 TOP TAPE : PET , OTHER
 REEL : POLYSTYRENE (PS) <RECYCLE MATERIAL CONTAINED>
6. ELV AND RoHS COMPLIANT



| | | | | | | |
|--|---------------------------------------|----------------------|---------------------|---|---------------|--------------|
| REVISED IEC NO. J2015-0816 DRAWN BY: 2014/12/16 CHIKDARTAKEUCHI APPROV: KMORIKAWA 2014/12/17 | GENERAL TOLERANCES (UNLESS SPECIFIED) | | DIMENSION STYLE | SCALE | MODEL NO. | 504622-***10 |
| | 10 UNDER ±0.2 | | MM ONLY | 1:5 | DESIGN UNITS | METRIC |
| | 10 OVER 30 UNDER ±0.25 | | DRAWN BY DATE | THIRD ANGLE PROJECTION | | |
| | 30 OVER ±0.3 | | HON001 2014/02/24 | TITLE | | |
| ANGULAR ±1 | | CHECKED BY DATE | 0.35 BB CONN. H=0.6 | | | |
| DRAFT WHERE APPLICABLE MUST REMAIN WITHIN DIMENSIONS | | RTAKEUCHI 2014/02/24 | SSB6 PLUG ASSY | | | |
| | | APPROVED BY DATE | EMBSTP PKG | | | |
| | | KMORIKAWA 2014/04/17 | | | | |
| | | MATERIAL NO. | SEE CHART | DOCUMENT NO. | SD-504622-002 | SHEET NO. |
| | | SIZE | A3 | THIS DRAWING CONTAINS INFORMATION THAT IS PROPRIETARY TO MOLEX INCORPORATED AND SHOULD NOT BE USED WITHOUT WRITTEN PERMISSION | | 1 OF 3 |

9 8 7 6 5 4 3 2

10 9 8 7 6 5 4 3 2 1

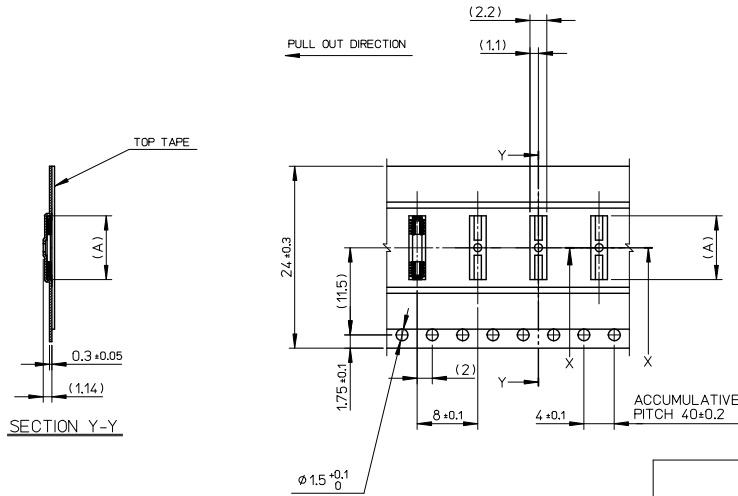


| | | | | | | | | | |
|--------------------------------|-------------|------|-----------|-------------|--|-----------------------|----------------|---------------|---------|
| 16 | 21.4 | 17.4 | 6.68 | 504622-3010 | o | --- | 30 | | |
| | | | 5.63 | 504622-2410 | o | --- | 24 | | |
| | | | 4.93 | 504622-2010 | o | --- | 20 | | |
| | | | 4.58 | 504622-1810 | --- | --- | 18 | | |
| | | | 4.23 | 504622-1610 | --- | --- | 16 | | |
| | | | 3.53 | 504622-1210 | --- | --- | 12 | | |
| | | | 3.18 | 504622-1010 | o | --- | 10 | | |
| 2.48 | 504622-0610 | --- | --- | 6 | | | | | |
| キャリアテープ幅 CARRIER TAPE WIDTH | | | C | B | (A) | EMBOSSED TAPE PACKAGE | HIGH VOL. TOOL | LOW VOL. TOOL | CIRCUIT |
| | | | ORDER NO. | | SAMPLE PREPARATION o : TOOLED △ : WORK IN PROCESS --- : TOOLING TO BE CONFIRMED | | | | |

| | | | | | | | | |
|---|---------------------------------------|---|----------------------------|--------------|---|------------------------|------------------------|--|
| REVISED REV. NO. J2015-0816 DRAWN BY TIDRANWYOSHIDA 2014/12/16 CHECKED BY CHIKDARTAKEUCHI 2014/12/16 APPROVED BY KMORIKAWA 2014/12/17 | GENERAL TOLERANCES (UNLESS SPECIFIED) | | DIMENSION STYLE MM ONLY | | SCALE 2:1 | DESIGN UNITS METRIC | THIRD ANGLE PROJECTION | |
| | 10 UNDER | ± 0.2 | DRAWN BY | DATE | TITLE | | | |
| | 10 OVER | ± 0.25 | HON001 | 2014/02/24 | 0.35 BB CONN. H=0.6 SSB6 PLUG ASSY EMBSTP PKG | | | |
| | 30 OVER | ± 0.3 | CHECKED BY | DATE | | | | |
| | 30 UNDER | ± 0.3 | RTAKEUCHI | 2014/02/24 | | | | |
| ANGULAR | ± 1 | APPROVED BY | DATE | MATERIAL NO. | DOCUMENT NO. | SHEET NO. | | |
| DRAFT WHERE APPLICABLE MUST REMAIN WITHIN DIMENSIONS | | KMORIKAWA | 2014/04/17 | SEE CHART | SD-504622-002 | 2 OF 3 | | |
| | | THIS DRAWING CONTAINS INFORMATION THAT IS PROPRIETARY TO MOLEX INCORPORATED AND SHOULD NOT BE USED WITHOUT WRITTEN PERMISSION | | | | | | |

9 8 7 6 5 4 3 2

10 9 8 7 6 5 4 3 2 1



| | | | | | | | | | |
|--------------------------------|-------------|------|-----------|-------------|--|-----------------------|----------------|---------------|---------|
| 24 | 29.4 | 25.4 | 13.68 | 504622-7010 | o | --- | 70 | | |
| | | | 12.63 | 504622-6410 | o | --- | 64 | | |
| | | | 11.93 | 504622-6010 | --- | --- | 60 | | |
| | | | 11.58 | 504622-5810 | --- | --- | 58 | | |
| | | | 10.88 | 504622-5410 | --- | --- | 54 | | |
| | | | 10.18 | 504622-5010 | o | --- | 50 | | |
| | | | 9.83 | 504622-4810 | --- | --- | 48 | | |
| | | | 8.78 | 504622-4210 | --- | --- | 42 | | |
| | | | 8.43 | 504622-4010 | o | --- | 40 | | |
| | | | 8.08 | 504622-3810 | --- | --- | 38 | | |
| 7.38 | 504622-3410 | o | --- | 34 | | | | | |
| キャリアテープ幅 CARRIER TAPE WIDTH | | | C | B | (A) | EMBOSSED TAPE PACKAGE | HIGH VOL. TOOL | LOW VOL. TOOL | CIRCUIT |
| | | | ORDER NO. | | SAMPLE PREPARATION o : TOOLED △ : WORK IN PROCESS - : TOOLING TO BE CONFIRMED | | | | |

| | | | | | | | | |
|--|---------------------------------------|--|----------------------------|--------------|---|------------------------|------------------------|--|
| REVISED IEC NO. J2015-0816 DRAWN BY TIDRANWOSHIDA 2014/12/16 CHECKED BY CHIKDRTAKEUCHI 2014/12/16 APPROVED BY KMORIKAWA 2014/12/17 | GENERAL TOLERANCES (UNLESS SPECIFIED) | | DIMENSION STYLE MM ONLY | | SCALE 2:1 | DESIGN UNITS METRIC | THIRD ANGLE PROJECTION | |
| | 10 UNDER | ±0.2 | DRAWN BY | DATE | TITLE | | | |
| | 10 OVER | ±0.25 | HON001 | 2014/02/24 | 0.35 BB CONN. H=0.6 SSB6 PLUG ASSY EMBSTP PKG | | | |
| | 30 OVER | ±0.3 | CHECKED BY | DATE | | | | |
| | ANGULAR | ±1 | RTAKEUCHI | 2014/02/24 | | | | |
| DRAFT WHERE APPLICABLE MUST REMAIN WITHIN DIMENSIONS | | APPROVED BY | DATE | MATERIAL NO. | DOCUMENT NO. | SHEET NO. | | |
| | | KMORIKAWA | 2014/04/17 | SEE CHART | SD-504622-002 | 3 OF 3 | | |
| | | THIS DRAWING CONTAINS INFORMATION THAT IS PROPRIETARY TO MOLEX INCORPORATED AND SHOULD NOT BE USED WITHOUT WRITTEN PERMISSION | | | | | | |

9 8 7 6 5 4 3 2 1