

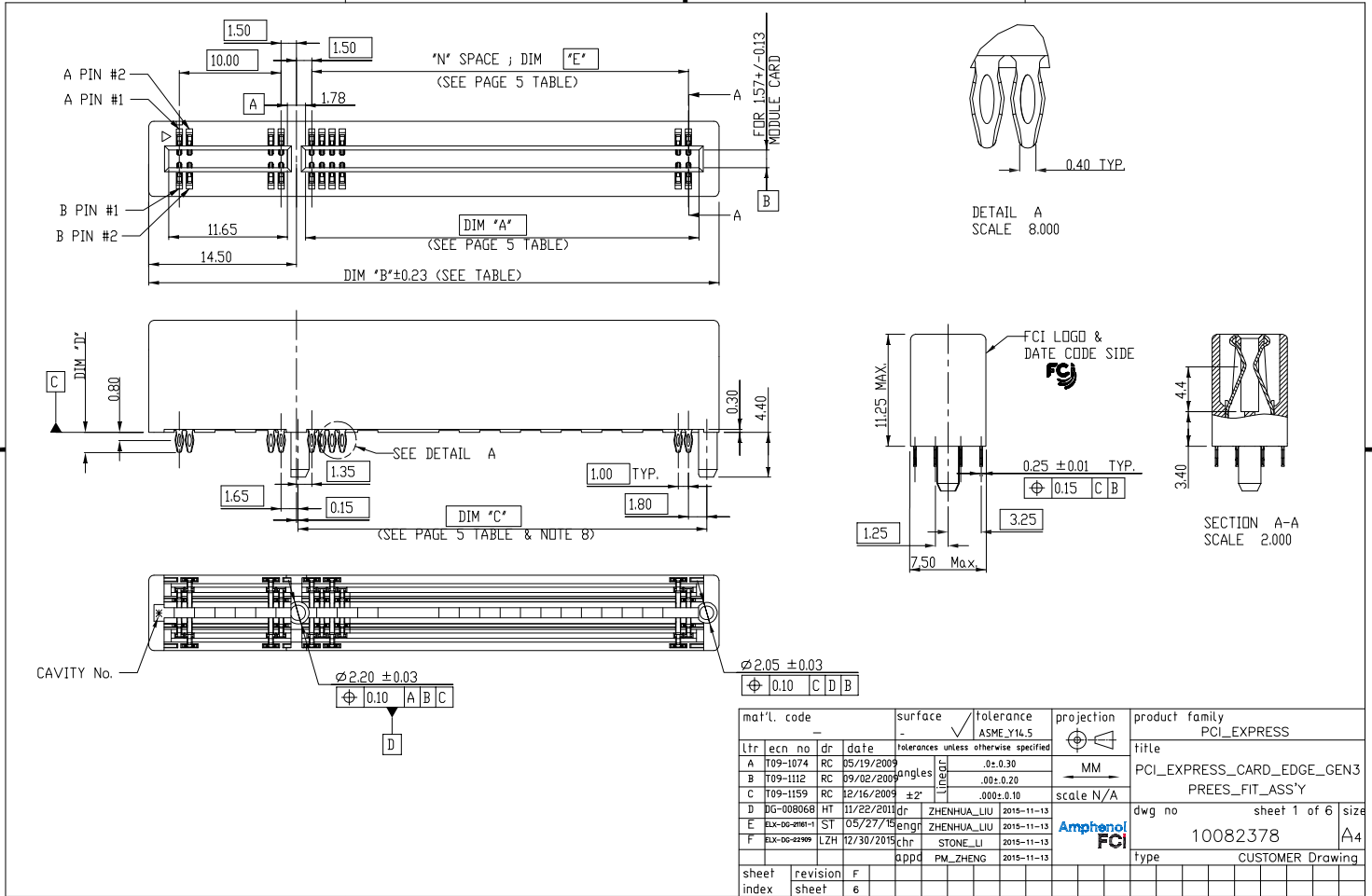
Excellent Integrated System Limited

Stocking Distributor

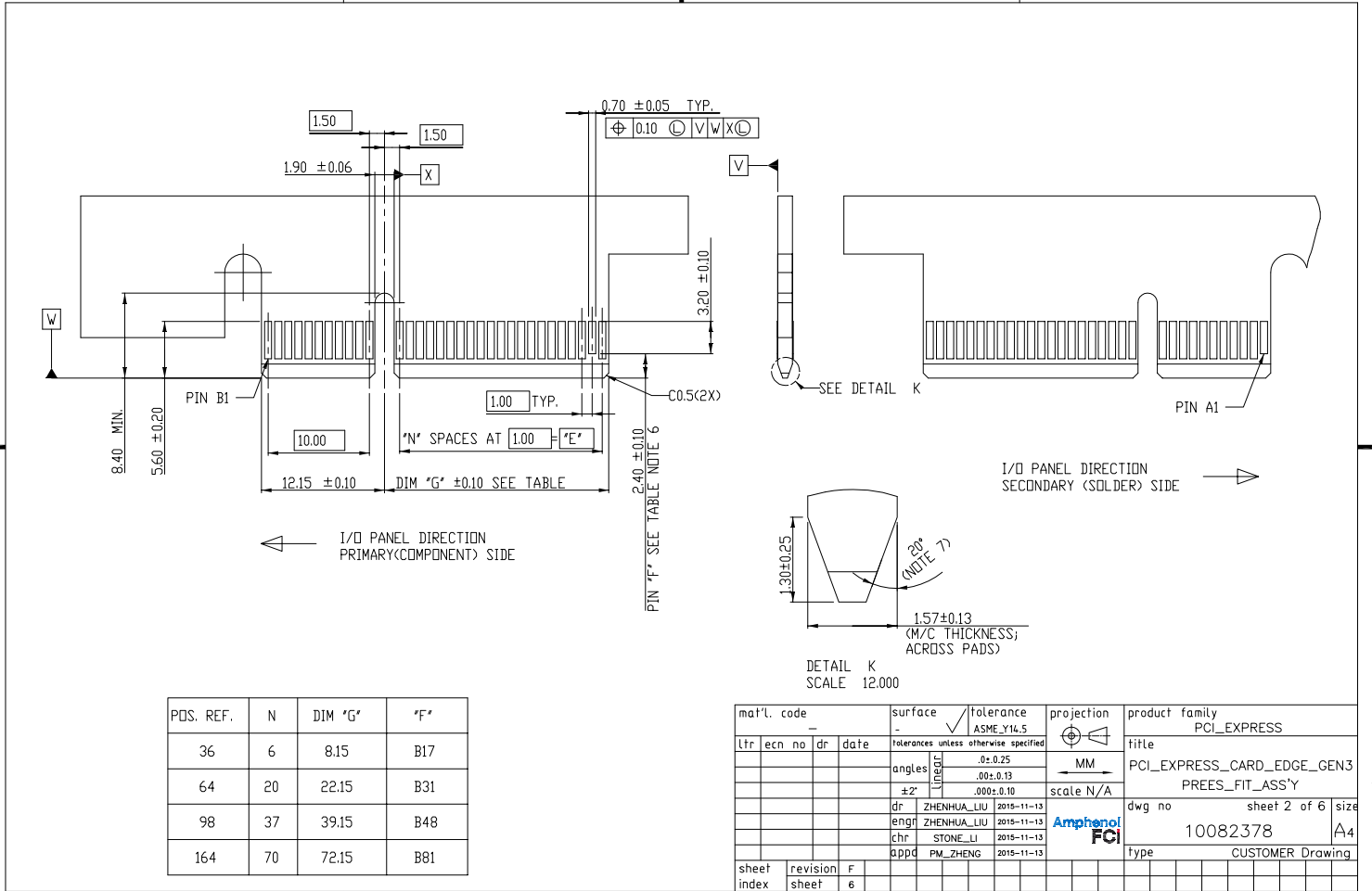
Click to view price, real time Inventory, Delivery & Lifecycle Information:

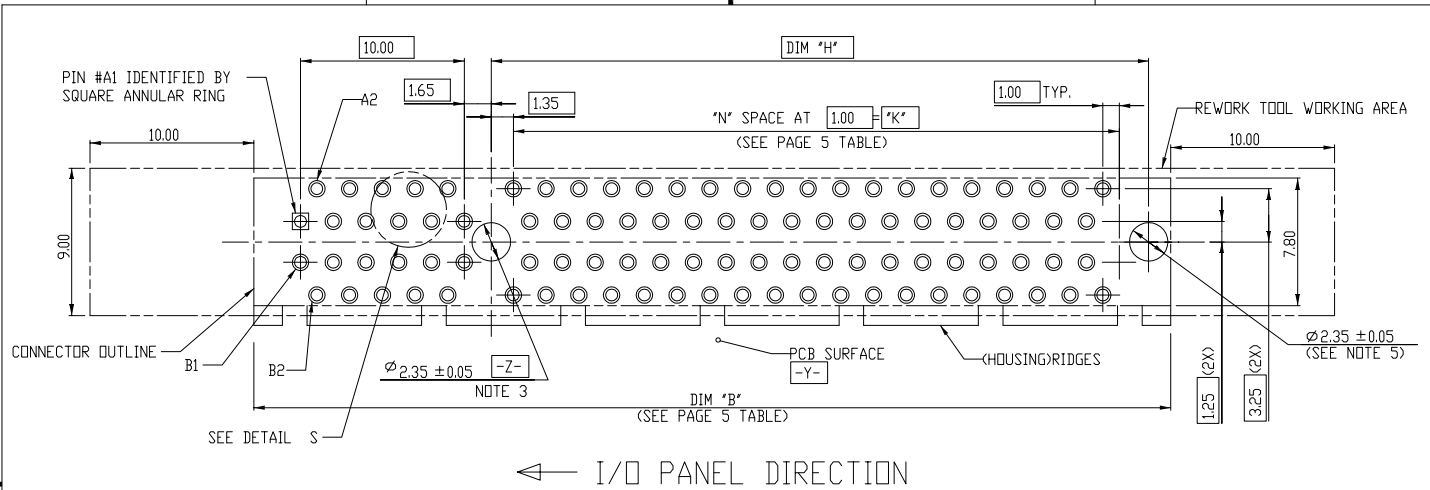
[FCI](#)
[10082378-10002TLF](#)

For any questions, you can email us directly:
sales@integrated-circuit.com



mat'l. code	surface	tolerance	projection	product family
-	-	ASME_Y14.5	MM	PCI_EXPRESS
ltr	ecn no	dr	date	title
A	I09-1074	RC	05/19/2009	PCI_EXPRESS_CARD_EDGE_GEN3
B	I09-1112	RC	09/02/2009	PREES_FIT_ASS'Y
C	I09-1159	RC	12/16/2009	
D	DG-008068	HT	11/22/2011	dwg no
E	EX-00-2mer-1	ST	05/27/15	sheet 1 of 6
F	EX-00-21999	LZH	12/30/2015	size
		appr	PM_ZHENG	A4
		sheet		type
		index		CUSTOMER Drawing

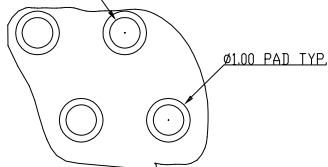




RECOMMENDED FOOTPRINT

PDS. REF.	N	DIM 'H'	DIM 'K'
36	6	9.15	6.00
64	20	23.15	20.00
98	37	40.15	37.00
164	70	73.15	70.00

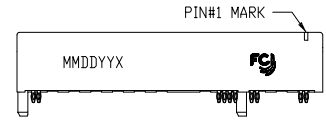
$\phi 0.70 \pm 0.08$ TYP.
 $\phi 0.10$ Y Z M
 (SEE NOTE 9 FOR PLATING DETAIL)



DETAIL S
 SCALE 8.000

mat'l. code				surface	tolerance	projection	product family
-				-	ASME_Y14.5	ϕ	PCI_EXPRESS
lfr	ecr	no	dr	date	tolerances unless otherwise specified		title
					angles	MM	PCI_EXPRESS_CARD_EDGE_GEN3
					$\pm 2^\circ$	scale N/A	PREES_FIT_ASS'Y
			dr	ZHENHUA_LIU	2015-11-13		dwg no
			engr	ZHENHUA_LIU	2015-11-13		sheet 3 of 6
			chr	STONE_LI	2015-11-13		size
			appd	FM_ZHENG	2015-11-13		A4
sheet	revision	F					type
index	sheet	6					CUSTOMER Drawing

- NOTES:
- MATERIAL:
 HOUSING: HIGH PERFORMANCE RESIN, GLASS FILLED UL94V-0 RATED
 TERMINAL: COPPER ALLOY
 PLATING: 50u" NICKEL UNDERPLATE ALL OVER TERMINAL
 CONTACT AREA PLATING - SEE PRODUCT NUMBER CODE
 CONTACT TAIL: TIN OR Sn/Pb - 100u" MIN. OVER 50u" NICKEL
 - P/N SEE TABLE AND PRODUCT NUMBER CODE: DESH-XXXXTLF FOR TRAY PACKAGING.
 - PACKAGING SPECIFICATION: GS-14-974
 - PRODUCT SPECIFICATION: GS-12-584
 - THE HORIZONTAL AXIS FOR THE HOLE PATTERN IS ESTABLISHED BY A LINE THROUGH THE CENTER OF THE TWO Ø2.35 HOLES.
 THE VERTICAL AXIS IS 90° TO THE HORIZONTAL AXIS, THROUGH THE CENTER OF DATUM Z.
 - NO TIE BAR PERMITTED FROM CARD EDGE TO LEADING EDGE OF PAD FOR PINS A1 AND PIN NUMBERS 'F'.
 - CHAMFER EDGES MUST BE FREE OF CUTTING BURRS.
 - DIMENSION APPLIES AT CENTER OF PLASTIC PEGS, DIMENSION SHOWN IS TO CENTER LINE OF PEGS.
 - ALL PTH SHOULD BE 0.70-0.82 mm DIA DRILLED AND 0.025 mm MIN. ELECTRO-DEPOSITED COPPER THK ON THROUGH HOLE WALL.
 - PRODUCT RoHS DEFINITIONS:
 a-IF TERMINAL PLATING OPTION IS '0,1 OR 2' WHICH MEANS PRODUCT IS 'RoHS COMPATIBLE'. THERE WILL BE 'LF' SUFFIX IN THE END.
 b-IF TERMINAL PLATING OPTION IS '3,4 OR 5' WHICH MEANS PRODUCT IS 'RoHS COMPLIANT'. THERE WILL BE NO 'LF' SUFFIX IN THE END.
 c-'LF' MEANS THE PRODUCT IS LEAD-FREE, 2um MINIMUM MATTE TIN OVER 1.27um MINIMUM NICKEL UNDERPLATE.
 - THE PRODUCT IS NOT INTENDED TO BE EXPOSED TO A MANUFACTURING SOLDER PROCESS.
 10082378 - X X X X X X X X X X



DATE CODE:
 MDDYY:MONTH/DAY/YEAR
 X: 'K' - GEN.2 MARK

HOUSING COLOR OPTION:
 1: BLACK
 2: NATURAL
 0: NON-RIDGE TYPE
 1: RIDGE TYPE
 (SEE SIDE VIEW OF THIS PAGE)

LEAD FREE OPTION
 LF: LEAD-FREE (FOR TERMINAL PLATING OPTION 0,1,2)
 □□: NOT LEAD-FREE (FOR TERMINAL PLATING OPTION 3,4,5)

PACKAGING OPTIONS
 T-TRAY PACKAGING

TERMINAL PLATING OPTIONS

0-50u" Ni UNDERPLATE
 30u" Au CONTACT AREA
 100u" TIN TAIL AREA -----RoHS COMPATIBALE

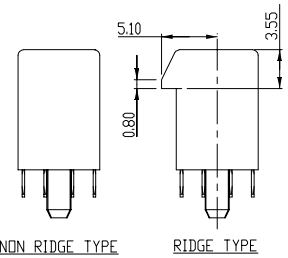
1-50u" Ni UNDERPLATE
 15u" Au CONTACT AREA
 100u" TIN TAIL AREA -----RoHS COMPATIBALE

2-50u" Ni UNDERPLATE
 GOLD FLASH CONTACT AREA
 100u" TIN TAIL AREA -----RoHS COMPATIBALE

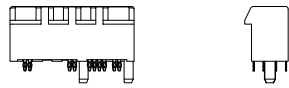
3-50u" Ni UNDERPLATE
 30u" Au CONTACT AREA
 36u"-102u" TIN TAIL AREA -----RoHS COMPATIBALE

TAIL LENGTH OPTIONS

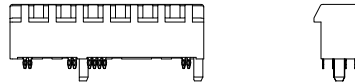
	DIM "D"	PCB THICKNESS
0	2.00±0.20	2.36
1	3.25±0.20	4.19



mat'l. code		surface	tolerance	projection	product family
-		-	ASME_Y14.5	⊕	PCI_EXPRESS
lfr	ecn no	dr	date	tolerances unless otherwise specified	title
				angles	PCI_EXPRESS_CARD_EDGE_GEN3
				±2°	PRESSES_FIT_ASS'Y
				dr	dwg no
				engr	sheet 4 of 6
				chr	size
				appd	A4
sheet index	revision sheet	F 6			type
					CUSTOMER Drawing



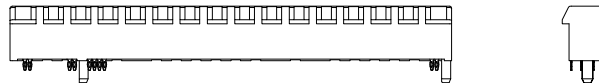
36 PIN RIDGE TYPE FRONT VIEW



64 PIN RIDGE TYPE FRONT VIEW

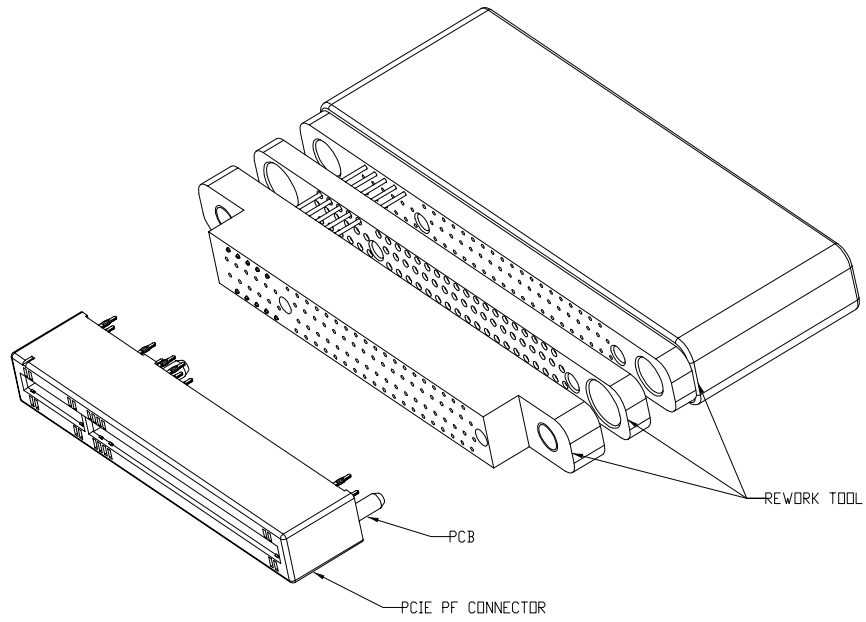


98 PIN RIDGE TYPE FRONT VIEW



164 PIN RIDGE TYPE FRONT VIEW

mat'l. code		-		surface	✓	tolerance	ASME_Y14.5	projection	product family	PCI_EXPRESS	
lfr	ecn no	dr	date	tolerances unless otherwise specified				⊕	title	PCI_EXPRESS_CARD_EDGE_GEN3	
				angles	0.01	.0±0.30		MM	PREES_FIT_ASS'Y		
				±2°		.00±0.20		scale N/A	dwg no	sheet 5 of 6	size
				dr	ZHENHUA_LIU	2015-11-13			10082378		A4
				engr	ZHENHUA_LIU	2015-11-13			type CUSTOMER Drawing		
				chr	STONE_LI	2015-11-13					
				appd	FM_ZHENG	2015-11-13					
sheet index	revision sheet	f	6								



CONNECTOR REWORK TOOL & ILLUSTRATION
 (SEE APPLICATION SPECIFICATION GS-20-117
 FOR DETAILS)

PRODUCT DIMENSION TABLE FOR EACH TYPES

CONNECTOR	# PDS REF.	N	DIM 'A'	DIM 'B'	DIM 'C'	DIM 'E'
1 PORT	36	6	7.65	25.00	9.15	6.00
4 PORT	64	20	21.65	39.00	23.15	20.00
8 PORT	98	37	38.65	56.00	40.15	37.00
16 PORT	164	70	71.65	89.00	73.15	70.00

mat'l. code		-		surface	✓	tolerance	ASME Y14.5	projection	product family	PCI_EXPRESS
lfr	ecn no	dr	date	tolerances unless otherwise specified				⊕	title	PCI_EXPRESS_CARD_EDGE_GEN3 PREES_FIT_ASS'Y
				angles	0.01	0.0±0.30		MM		
				±2°	0.00±0.20			scale N/A	dwg no	10082378
				dr	ZHENHUA_LIU	2019-11-13			sheet 6 of 6	size
				engr	ZHENHUA_LIU	2019-11-13				A4
				chr	STONE_LI	2019-11-13				
				appd	FM_ZHENG	2019-11-13			type	CUSTOMER Drawing
sheet index	revision sheet	F	6							