

## Excellent Integrated System Limited

Stocking Distributor

Click to view price, real time Inventory, Delivery & Lifecycle Information:

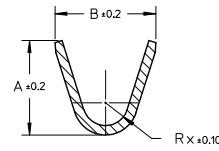
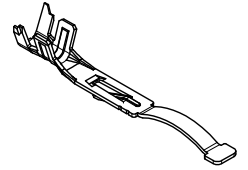
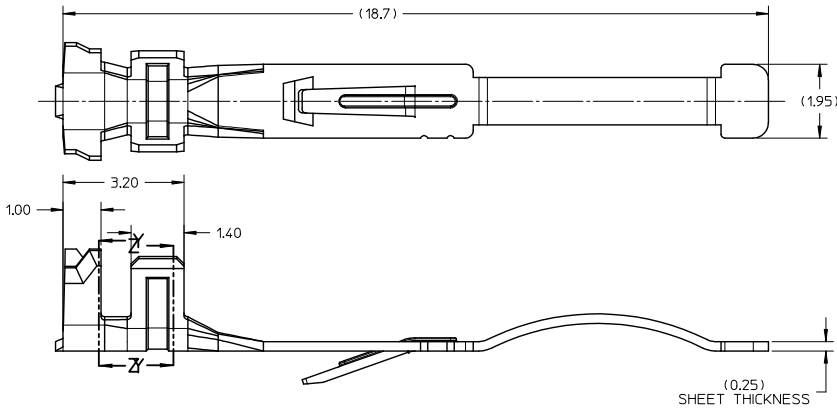
[Molex Connector Corporation](#)  
[0368760002](#)

For any questions, you can email us directly:

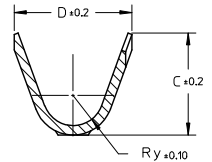
[sales@integrated-circuit.com](mailto:sales@integrated-circuit.com)

10 9 8 7 6 5 4 3 2 1

PART NO	AWG	A	B	Rx	C	D	Ry
368760001	20-22	2.50	2.70	0.60	2.70	3.10	0.80
368760002	24-26	2.35	2.70	0.25	2.20	2.40	0.70

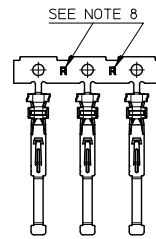
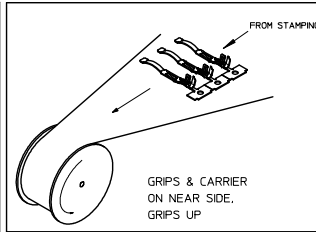
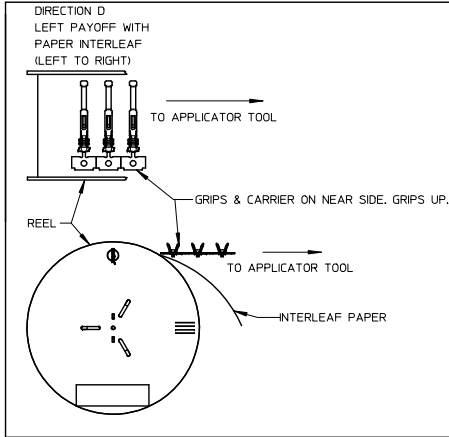


SECTION Z-Z



SECTION Y-Y

REELING DIRECTIONS



NOTES:

1. MATERIAL: HIGH COPPER
2. PLATING: TIN OVER NICKEL OVERALL
3. PRODUCT SPECIFICATION: PS-36876-001
4. PACKAGING SPECIFICATION: PK-36876-001
5. MATES WITH: IDENTICAL TERMINAL (SERIES 36876)
6. USED WITH: GENDERLESS CRIMP HOUSING SERIES 36877
7. COSMETIC SPECIFICATION: PS-45499-002 CLASS B
8. 'R' MARKING ON CARRIER STRIP IS FOR INTERNAL REFERENCE ONLY.

NOTES: LABEL CHANGED TO "A" REC. NO: UCFP2016-1548 2015/05/11 DRAWN: NCSR CHKD: NCSR APPR: KPRASAD 2015/10/26	QUALITY SYMBOLS $\nabla=0$ $\nabla=0$ $\nabla=0$	GENERAL TOLERANCES (UNLESS SPECIFIED)		DIMENSION STYLE		SCALE	DESIGN UNITS	THIRD ANGLE PROJECTION	
			mm	INCH	MM ONLY		10:1		METRIC
		4 PLACES	±---	±---	DRAWN BY	DATE	TITLE		
		3 PLACES	±---	±---	NCSR	2013/10/28	GENDERLESS TERMINAL 20-26 AWG DITTO INTERCONNECTS		
	2 PLACES	±0.13	±---	CHECKED BY	DATE	molex			
	1 PLACE	±0.25	±---	APPROVED BY	DATE	SD-36876-001			
	0 PLACE	±---	±---	KPRASAD	2013/10/29	SHEET NO. 1 OF 1			
ANGULAR ±1/2° DRAFT WHERE APPLICABLE MUST REMAIN WITHIN DIMENSIONS		MATERIAL NO.		SEE TABLE		DOCUMENT NO.			
		SIZE A3		THIS DRAWING CONTAINS INFORMATION THAT IS PROPRIETARY TO MOLEX INCORPORATED AND SHOULD NOT BE USED WITHOUT WRITTEN PERMISSION					

9 8 7 6 5 4 3 2 1