

Excellent Integrated System Limited

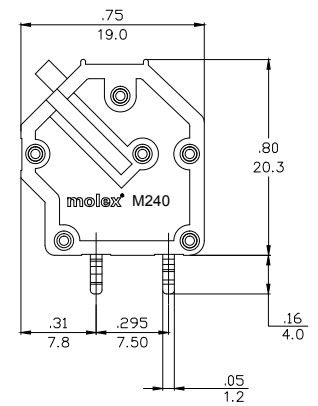
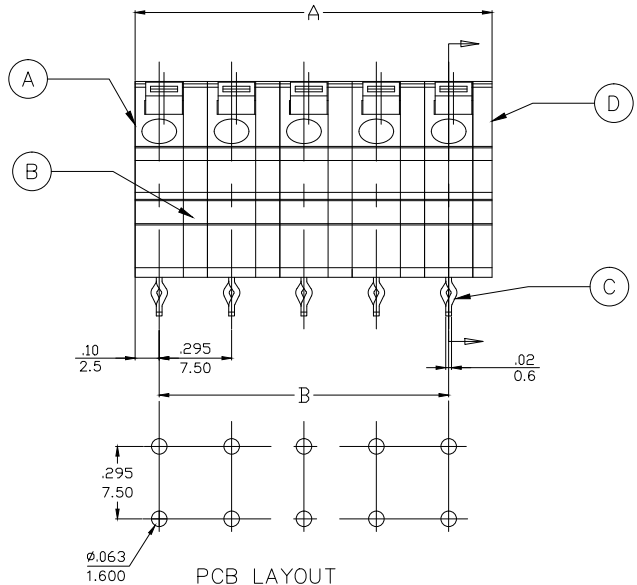
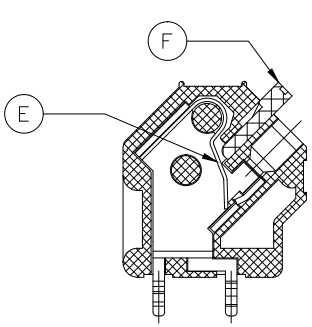
Stocking Distributor

Click to view price, real time Inventory, Delivery & Lifecycle Information:

[Molex Connector Corporation](#)
[0397000502](#)

For any questions, you can email us directly:

sales@integrated-circuit.com



ENGINEERING LEGEND
M240-00-4-XX-M4
 SERIES STYLE | POLES COLOR
 PITCH

SPECIFICATIONS:

1. Material:
 - A Single Body: PA66 UL94 V-0
 - B Middle Cover: PA66 UL94 V-0
 - C Single Terminal: Brass Tin plated
 - D Cover: PA66 UL94 V-0
 - E Spring: Stainless Steel
 - F Button: PA66 UL94 V-0
2. Wire Size: 26 to 14AWG
3. Rating: 300V, 10A
4. Wire strip length: 11.00mm
5. Power Frequency withstand: AC 2500V for 1 minute
6. Insulation resistance: DC 500V, 500MΩ
7. Rated Impulse Voltage: 4000V ±5 times each.
8. Operating Temperature: -40 to +105°
9. Pitch: 7.50mm (.295 in.)
10. Dims shown are for reference only

PART NUMBER DATA							
CIRCUITS	PART NUMBER	ENGINEERING NUMBER	COLOR	A IN mm		B IN mm	
2	397000502	M240-00-4-02-M4	LIGHT GRAY	.57	14.5	.295	7.50
3	397000503	M240-00-4-03-M4		.87	22.0	.591	15.00
4	397000504	M240-00-4-04-M4		1.16	29.5	.886	22.50
5	397000505	M240-00-4-05-M4		1.46	37.0	1.181	30.00
6	397000506	M240-00-4-06-M4		1.75	44.5	1.476	37.50

RELEASED EC NO: PC2014-0570 DRWN: RSTONE 2013/10/18 CHKD: G FARNSW APPR: JFMURPHY 2013/12/26 REV A	QUALITY SYMBOL ▽=0 ▽=0	GENERAL TOLERANCES (UNLESS SPECIFIED) mm INCH 4 PLACES ±.1 ±.005 3 PLACES ±.1 ±.01 2 PLACES ±.3 ±.01 1 PLACE ±.3 ±.01 ANGULAR ±.5°	DIMENSION STYLE IN/MM DRAWN BY DATE RSTONE 2013/10/18 CHECKED BY DATE G FARNSW 2013/12/20 APPROVED BY DATE JFMURPHY 2013/12/26	SCALE --- DESIGN UNITS METRIC THIRD ANGLE PROJECTION	TITLE SPRING TERMINAL BLOCK 7.5MM, 45 DEG-MODULAR MOLEX INCORPORATED
	DRAFT WHERE APPLICABLE MUST REMAIN WITHIN DIMENSIONS		MATERIAL NO. SEE CHART SIZE C	MOLEX INCORPORATED DOCUMENT NO. SD-39700-005 SHEET NO. 1 OF 1	
	THIS DRAWING CONTAINS INFORMATION THAT IS PROPRIETARY TO MOLEX INCORPORATED AND SHOULD NOT BE USED WITHOUT WRITTEN PERMISSION				
	MOLEX INCORPORATED				